

YINYOO ZSN Pro

YINYOO KZ ZSN Pro In-Ear Monitor Earphones User Manual

Model: ZSN Pro

1. INTRODUCTION

Thank you for choosing the YINYOO KZ ZSN Pro In-Ear Monitor Earphones. These earphones are designed to provide a high-fidelity audio experience with a hybrid dynamic and balanced armature driver system. This manual provides essential information for proper setup, operation, maintenance, and troubleshooting to ensure optimal performance and longevity of your earphones.



Image 1.1: KZ ZSN Pro In-Ear Monitor Earphones in gray.

2. PACKAGE CONTENTS

Please verify that all items are present in your package:

- 1 pair of KZ ZSN Pro In-Ear Monitor Earphones
- 1 detachable earphone cable
- 3 pairs of silicone eartips (S/M/L)
- 1 User Manual (this document)

3. SETUP AND WEARING INSTRUCTIONS

3.1 Attaching the Cable

The KZ ZSN Pro earphones feature a detachable 2-pin cable for easy replacement and storage. Ensure the cable connectors are aligned correctly with the earphone sockets. The cable has a slot protection design to prevent pin breakage.

- Identify the 'L' (left) and 'R' (right) markings on both the earphones and the cable connectors.
- Gently push the 2-pin connector into the corresponding earphone socket until it is securely seated. Do not force the connection.

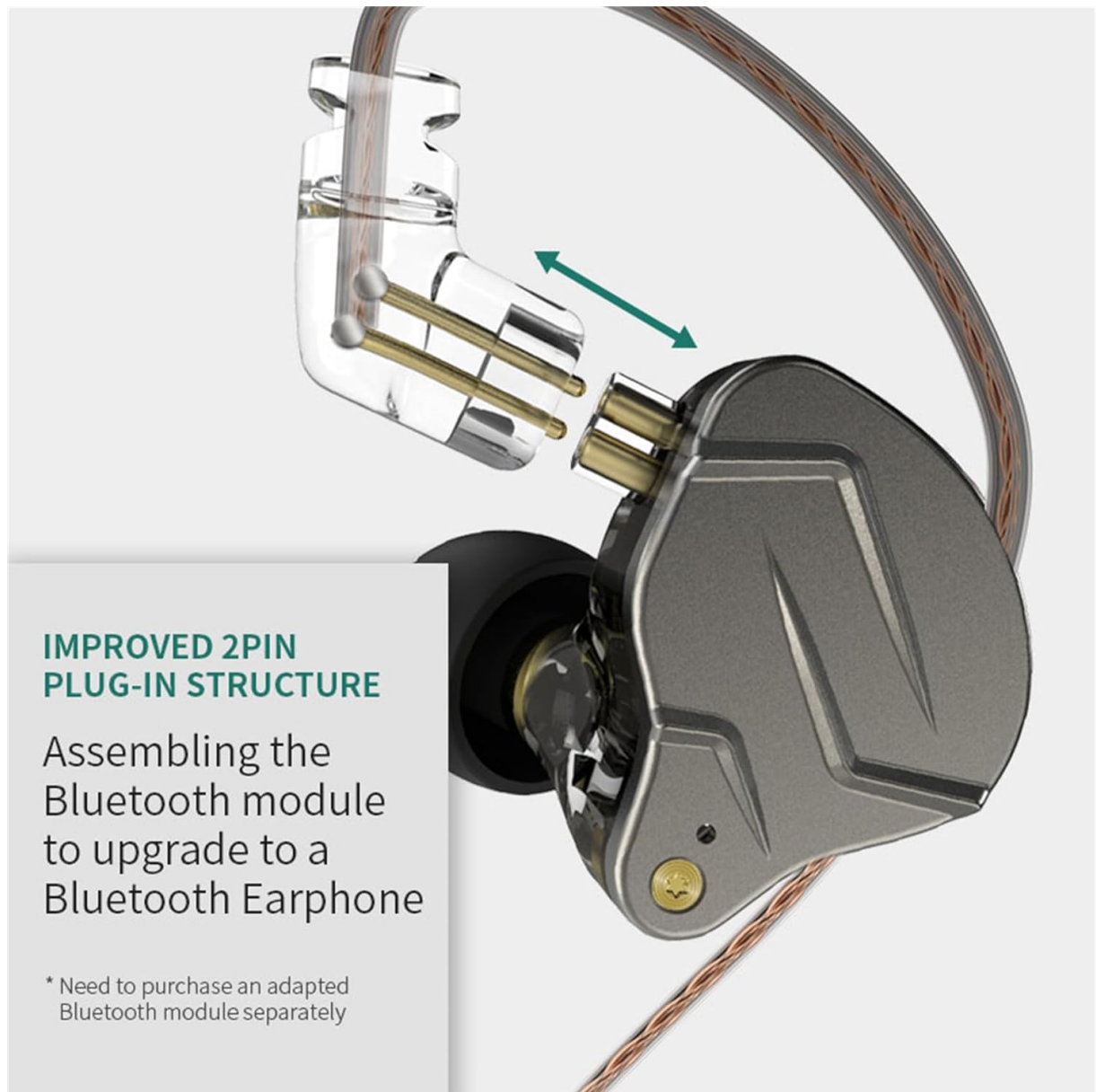


Image 3.1: Detachable 2-pin cable connection for KZ ZSN Pro earphones.

3.2 Selecting Eartips

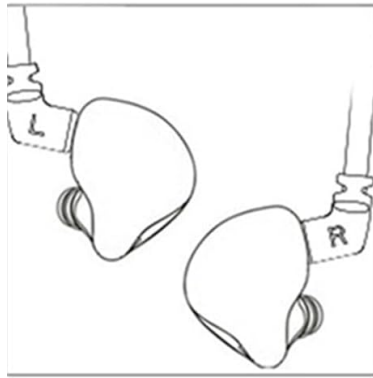
Proper eartip selection is crucial for sound quality and comfort. Experiment with the included S, M, and L eartips to find the best fit for your ears. A good seal will enhance bass response and noise isolation.

3.3 Wearing the Earphones

The KZ ZSN Pro earphones are designed for an ergonomic, over-ear fit to ensure stability and comfort during use.

1. Identify the left ('L') and right ('R') earphones.
2. Insert the earphone into your ear canal.
3. Guide the cable over the top of your ear, ensuring it sits comfortably and securely. The pre-formed ear hook helps maintain position.
4. Adjust the earphone and cable until a comfortable and secure fit is achieved, creating a good seal in your ear canal.

Schematic Diagram Of Headset Wearing



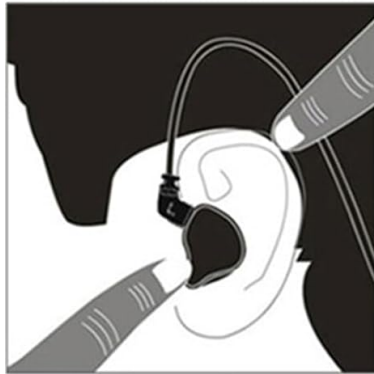
Correctly distinguish right and left headphones, " L " for left, " R " for right.



Straight headphones inserted into the ear, correct wear, comfortable wear, good sound insulation performance.



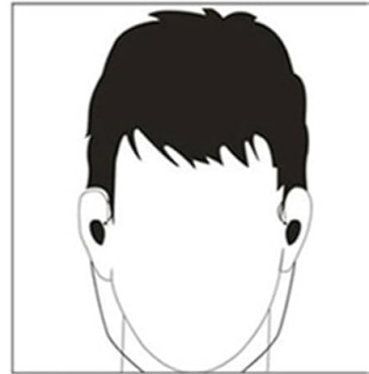
Fix the headset wire behind the ear.



Press and hold the headset panel to adjust the seal.



Adjust earphone wire and fix earphone.



Plug the headset plugs into the play-back device and use the device to adjust the volume before the headset is plugged into the device.

Image 3.2: Schematic diagram illustrating correct wearing of KZ ZSN Pro earphones.

4. OPERATING INSTRUCTIONS

4.1 Basic Audio Playback

Connect the 3.5mm jack of the earphone cable to your audio source (smartphone, tablet, computer, etc.). Adjust the volume on your device to a comfortable listening level before placing the earphones in your ears.

4.2 Media Control (if applicable)

If your cable includes an inline remote, you can control media playback and calls:

- **Short Press:** Answer/End Call, Play/Pause Music
- **Press Twice:** Next Song
- **Press Three Times:** Previous Song
- **Long Press:** Reject Call

Note: Functionality may vary depending on your connected device and operating system.

5. MAINTENANCE AND CARE

- **Cleaning:** Regularly clean the eartips with a soft, damp cloth. Ensure no moisture enters the

earphone drivers.

- **Cable Care:** The detachable cable is designed for durability. Avoid sharp bends or excessive pulling. When detaching, pull directly on the connector, not the cable itself.
- **Storage:** When not in use, store your earphones in a clean, dry place, preferably in a protective case, to prevent tangling and damage.
- **Water Resistance:** The earphones are rated as waterproof. However, avoid prolonged submersion or exposure to high-pressure water. Dry thoroughly if exposed to moisture.

6. TROUBLESHOOTING

6.1 No Sound or Low Volume

- Ensure the 3.5mm jack is fully inserted into your audio device.
- Check the volume level on your audio device.
- Verify that the earphone cable is securely connected to both earphones.
- Test with another audio source or another pair of headphones to isolate the issue.

6.2 Poor Sound Quality (Distortion, Lack of Bass)

- Ensure the eartips provide a proper seal in your ear canal. Try different sizes.
- Check for debris or earwax buildup in the earphone nozzles. Clean carefully if necessary.
- Some users report a faint 'snow' or static sound when no audio is playing or at very low volumes. This is a characteristic of some high-sensitivity earphones and is typically masked by audio playback.

6.3 Earphones Falling Out

- Ensure you are using the correct eartip size for a snug fit.
- Confirm the cable is routed over your ear correctly, utilizing the ear hook design for stability.

7. SPECIFICATIONS

The following table outlines the technical specifications of the KZ ZSN Pro In-Ear Monitor Earphones:

Feature	Specification
Model Name	bc01pro
Audio Driver Type	Hybrid Driver (1 Dynamic, 1 Balanced Armature)
Frequency Response	7.4 Hz - 40 kHz
Sensitivity	104 dB
Impedance	25 Ohm
Connectivity Technology	Wired
Headphones Jack	3.5 mm Jack
Cable Feature	Detachable 2-pin
Noise Control	Sound Isolation
Material	Zinc Alloy, Resin, Metal, Plastic

Feature	Specification
Water Resistance Level	Waterproof
Item Weight	1.76 ounces
Product Dimensions	1.57 x 4.72 x 7.87 inches

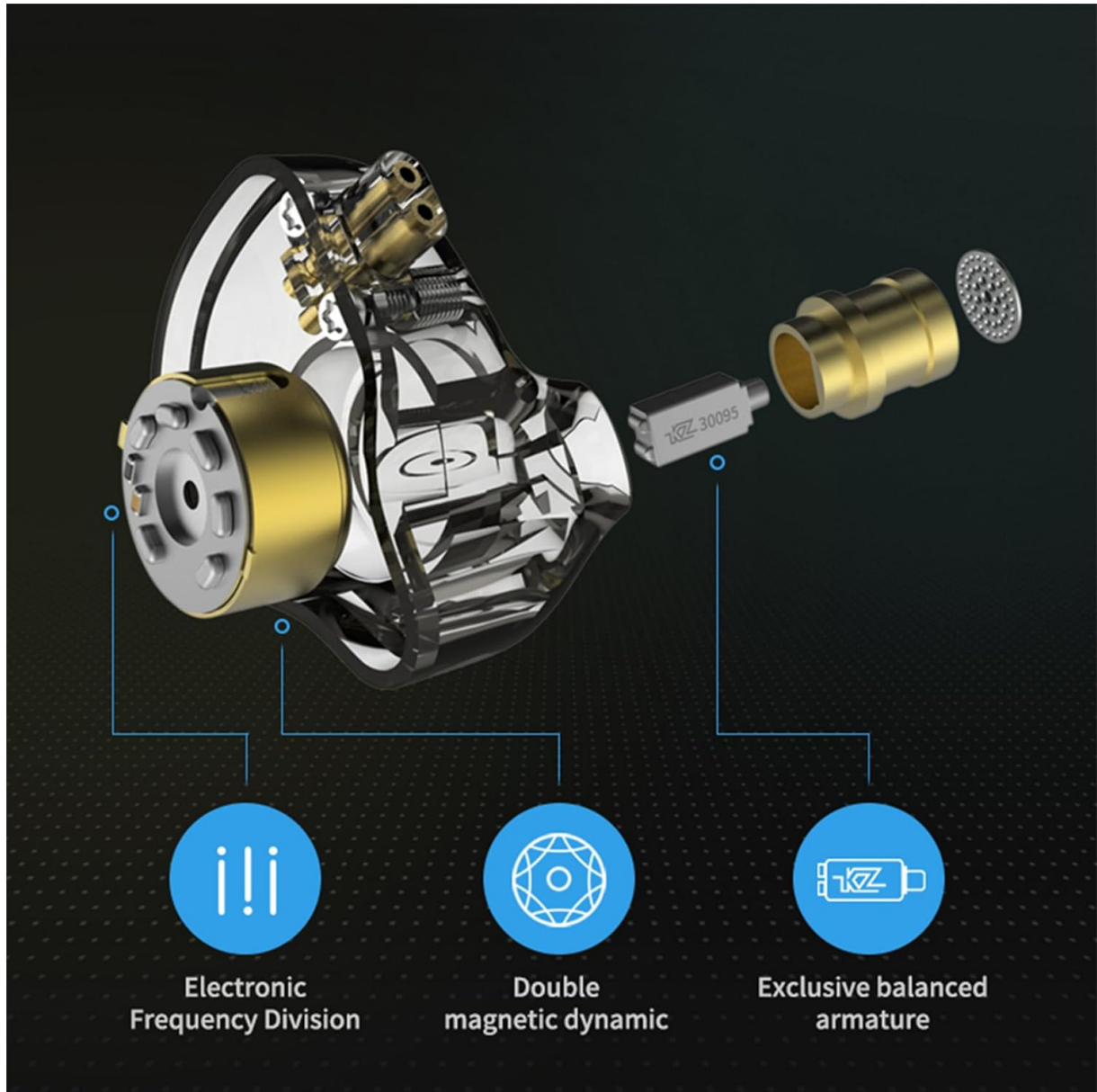


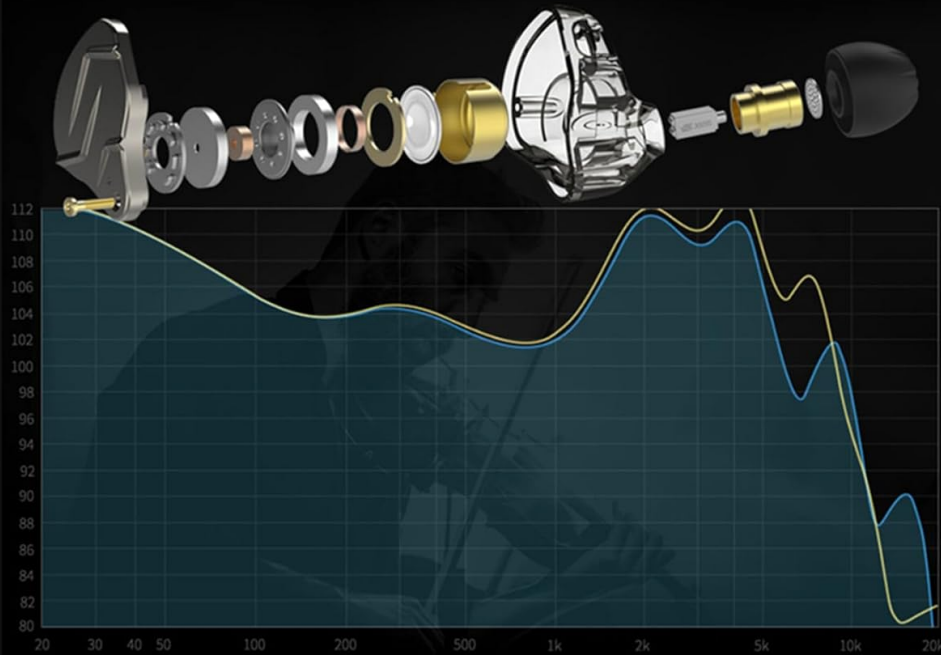
Image 7.1: Internal structure of KZ ZSN Pro earphones showing hybrid drivers.

03

New Professional-grade Electronic Crossover Adjustment.

Let The Advantages Of Dynamic And Balanced Armature Combine With Each Other.

Precise internal acoustic structure and fine circuit optimization, Realize low-medium-high-three-frequency reasonable frequency division, and enhance the separation and layering of music.



*The above data were measured by KZ Acoustics Laboratory, and actual use may very slightly depending on the specific situation.

Image 7.2: Frequency response curve and internal components of KZ ZSN Pro earphones.

8. WARRANTY AND SUPPORT

YINYOO Audio is committed to providing high-quality products and customer satisfaction. Any reported issues will be addressed promptly, typically in the form of a replacement.

- For support or warranty inquiries, please contact YINYOO Audio customer service through the retailer where you purchased the product.
- Please have your purchase details and product model information ready when contacting support.