

HOIN 100 inch Projector Screen

HOIN 100-inch Portable Projector Screen with Stand Instruction Manual

Model: 100 inch Projector Screen (B07PZKGFNH)

1. INTRODUCTION

This manual provides detailed instructions for the assembly, operation, and maintenance of your HOIN 100-inch portable projector screen with stand. Designed for both indoor and outdoor use, this 16:9 aspect ratio screen supports HD and 4K projection, offering a 160° wide viewing angle for an immersive viewing experience. Please read these instructions carefully before use to ensure proper setup and longevity of your product.



Image 1.1: The HOIN 100-inch portable projector screen with its stand, ready for use.

2. PRODUCT OVERVIEW AND COMPONENTS

The HOIN 100-inch projector screen system includes all necessary components for quick assembly and stable operation. Familiarize yourself with the parts before beginning assembly.

PRODUCT ACCESSORIES

Easy to carry, the product net weight is 3 kg, easy to store, easy to install

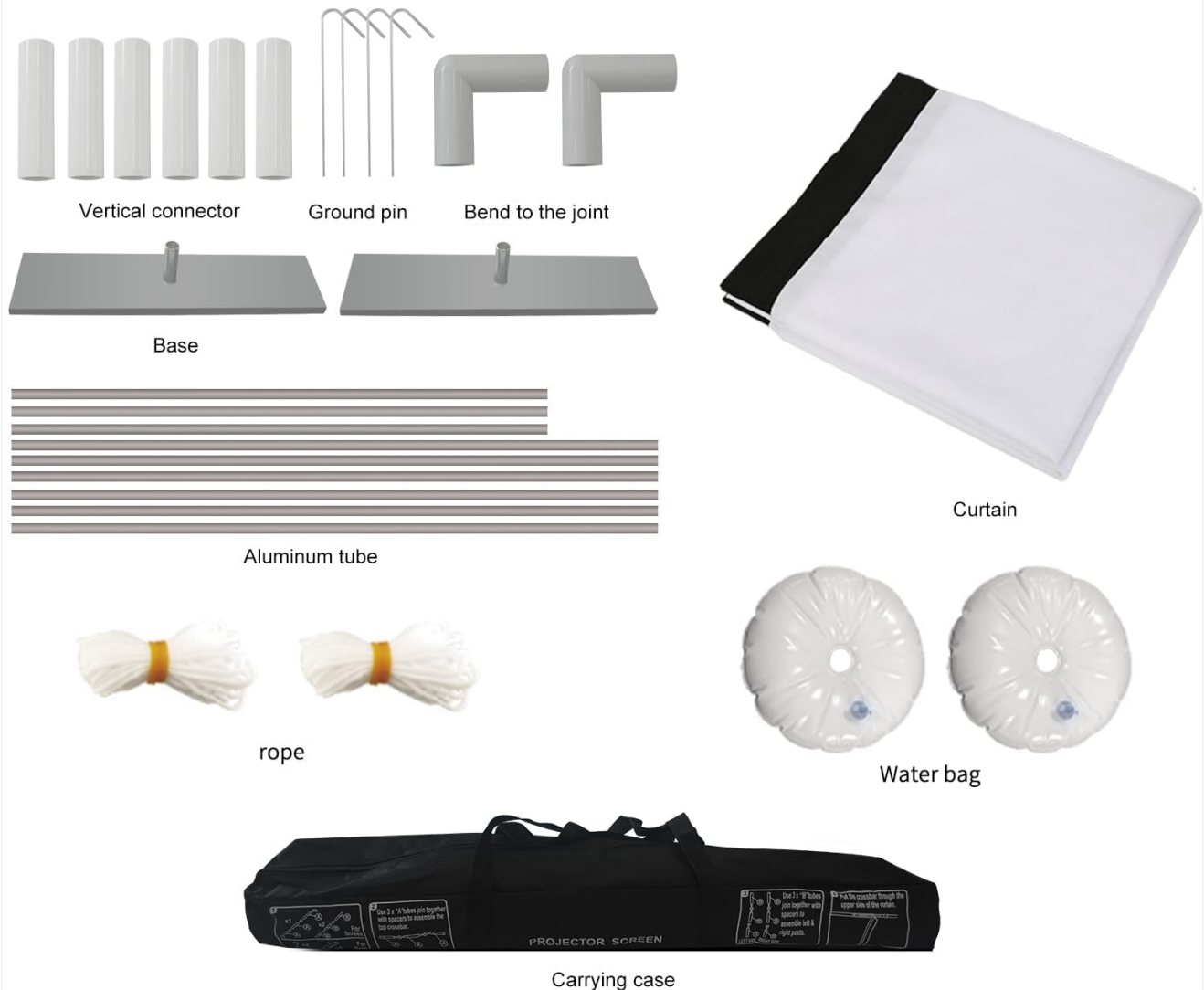


Image 2.1: All components included in the HOIN projector screen package. These include vertical connectors, ground pins, bend joints, bases, aluminum tubes, ropes, water bags, the screen curtain, and a carrying case.

Included Components:

- **Screen Curtain:** The main projection surface, made from wrinkle-free polyester fabric.
- **Aluminum Tubes:** Frame sections that connect to form the screen's support structure.
- **Vertical Connectors:** Used to join aluminum tubes.
- **Bend Joints:** Corner pieces for the frame.
- **Bases:** Two flat bases for the vertical support poles.
- **Ground Pins:** For securing the stand in soft ground outdoors.
- **Ropes:** For additional stability in windy conditions.
- **Water Bags:** Fillable bags for weighting down the stand bases.
- **Carrying Bag:** For convenient storage and transport of all components.

3. SETUP INSTRUCTIONS

The HOIN projector screen is designed for quick assembly, typically within 5 minutes, without the need for additional

tools. Follow these steps for a stable setup.

1. **Unpack Components:** Lay out all components from the carrying bag on a clean, flat surface.
2. **Assemble the Frame:** Connect the aluminum tubes using the vertical connectors and bend joints to form the rectangular screen frame. Ensure all connections are secure.
3. **Attach Bases:** Insert the vertical support poles into the bases.
4. **Mount Screen:** Carefully slide the screen curtain onto the assembled frame. The screen is designed to stretch smoothly, minimizing wrinkles.
5. **Position the Stand:** Place the assembled screen and stand in your desired viewing location.
6. **Secure for Outdoor Use (Optional):** If using outdoors or in windy conditions, fill the water bags and place them on the stand bases for added stability. Use the provided ropes and ground pins to further anchor the screen to the ground.

Portable and Lightweight

It is easy to carry and suitable to take it out to the outdoors.
The bag size is 80cm wide and 9cm high.



Image 3.1: The assembled projector screen being transported in its compact carrying bag, demonstrating its portability.

4. OPERATING INSTRUCTIONS

Once assembled, the HOIN projector screen is ready for use with your projector. Optimal viewing is achieved by

following these guidelines.

- **Projector Placement:** Position your projector directly in front of the screen for the best image quality. The screen supports both front and rear projection.
- **Viewing Angle:** The screen offers a 160° wide viewing angle, ensuring clear images and rich colors from various positions.
- **Image Quality:** The high-definition coating and natural polyester fabric are designed to provide sharp, high-resolution images with accurate color reproduction.



Image 4.1: Diagram illustrating the 160-degree wide viewing angle of the projector screen, ensuring visibility from various positions.

HIGH-DEFINITION IMAGE COLOR REAL REDUCTION

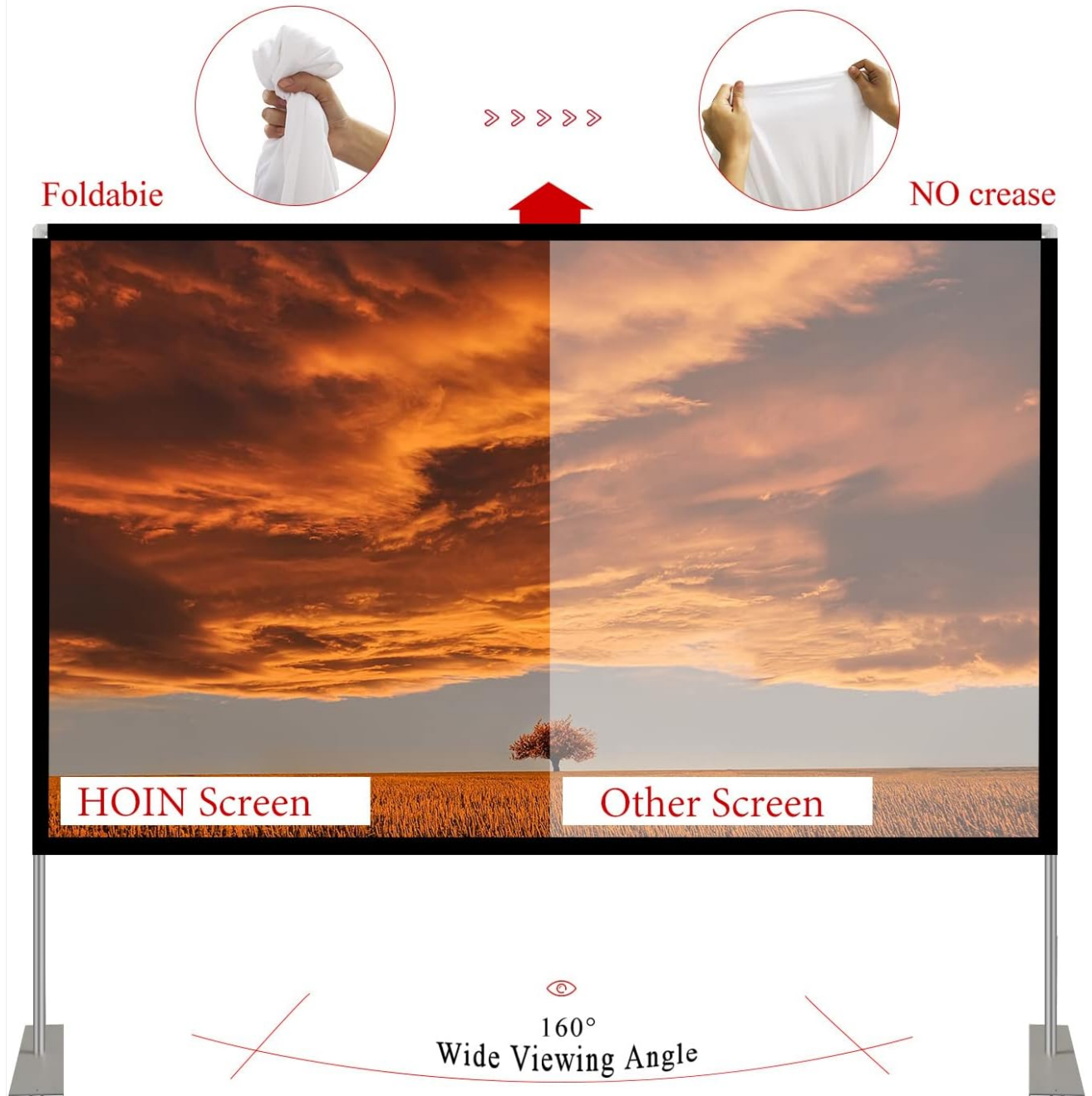


Image 4.2: Comparison showing the superior color reduction and high-definition image quality of the HOIN screen compared to another screen, highlighting its wrinkle-free material.

5. MAINTENANCE

Proper care and maintenance will extend the life and performance of your projector screen.

- **Cleaning the Screen:** The screen is made of natural polyester fabric, which is flexible and resistant to wrinkles. If cleaning is necessary, gently hand wash the screen with mild soap and water. Avoid harsh chemicals or abrasive materials.
- **Wrinkle-Free Design:** The screen material is designed to be wrinkle-free. If any creases appear from storage, they typically smooth out when the screen is stretched onto the frame.
- **Storage:** After use, disassemble the screen and frame, and store all components in the provided carrying bag. Store in a cool, dry place away from direct sunlight.



Image 5.1: A hand gently washing the screen material, demonstrating its washable and wrinkle-resistant properties.

6. TROUBLESHOOTING

Refer to this section for solutions to common issues.

Problem	Possible Cause	Solution
Screen instability outdoors	Windy conditions, uneven ground, insufficient anchoring.	Ensure water bags are filled and placed on bases. Use ground pins and ropes to secure the stand. Choose a level surface for setup.
Wrinkles on screen surface	Improper storage, screen not fully stretched.	Ensure the screen is properly stretched onto the frame. The polyester material is designed to be wrinkle-free; minor creases should disappear with tension. Store the screen rolled or folded loosely in its bag.
Difficulty assembling frame	Components not aligned correctly.	Refer to the assembly diagram (Image 2.1) and ensure all tubes and connectors are inserted fully and correctly.

7. SPECIFICATIONS

Key technical details for the HOIN 100-inch portable projector screen.

- **Screen Size (Diagonal):** 100 inches (254 cm)
- **Aspect Ratio:** 16:9
- **Viewing Angle:** 160°
- **Supported Resolution:** HD, 4K
- **Material:** Aluminum (frame), Polyester (screen)
- **Viewable Screen Dimensions:** Approximately 210 cm (82.7 inches) width x 140 cm (55.1 inches) height
- **Frame Dimensions:** Approximately 207 cm (81.5 inches) width x 131 cm (51.6 inches) height
- **Item Weight:** 5 pounds (approximately 2.27 kg)
- **Mounting Type:** Floor Mount
- **Manufacturer:** HOIN
- **Model Number:** Projector screen (B07PZKGFNH)

Note: The provided product data lists "Product Dimensions: 48.43\"W x 48.43\"H", which appears to be an error for a 100-inch 16:9 screen. The dimensions listed above are derived from the product's detailed size diagram.

PRODUCT SIZE

View size: 210cm x 140cm frame size: 207cm x 131cm Storage bag: 80cm x 9cm

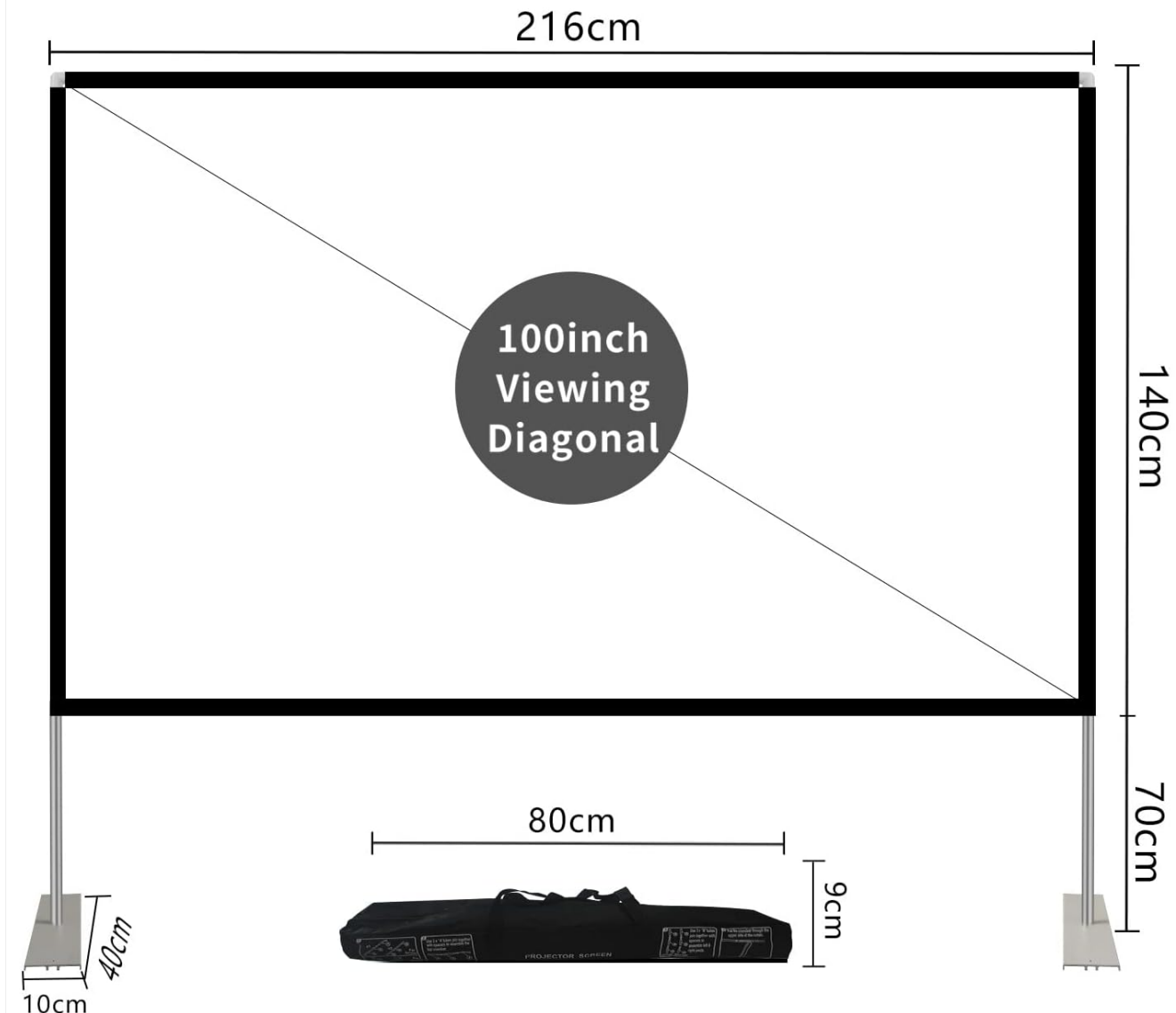


Image 7.1: Detailed dimensions of the 100-inch projector screen, including view size, frame size, and storage bag dimensions.

Related Documents - 100 inch Projector Screen



Product Introduction

HCP-HSE is a well-designed economic printer for control thermal jetting. The model is well-aided materials/Exquisite workmanship. Transparent cover design, simple and fashion, easy for users to know the paper tube's using status. HCP-HSE adopt built-in power supply and only can work open but also easy for users to configure and use the printers. It's a very good choice for economical solution.

Product Features:

Product Features:

- Simple installation, with solid material, requires no wiring.
- Easy paper inlet structure, simple and convenient to operate.
- Built-in power supply design, 0- save space and more convenient to configure.
- Transparent cover design, the user can know the paper roll's usage status and

Support CB 9000 log file

Support multi-language print, suitable for users all over the world;
Support download and print LOGO graphics ;
Support Windows, Linux, Android and iOS system printing.

Agglutinates

literature, transportation, logistics, supermarket, telecom, hydro-power-plant, mobile government affairs, mobile price panel and other industries

HOIN HOP-H58 Thermal Receipt Printer: Specifications and Features

Detailed specifications, features, and applications for the HOIN HOP-H58 Thermal Receipt Printer, including printing parameters, connectivity, and system compatibility.

