

Listen LW-100P-02-01

Listen Everywhere 2 Channel Server User Manual

MODEL: LW-100P-02-01

Introduction

The Listen Technologies LW-100P-02-01 Listen Everywhere 2 Channel Server is designed to provide an affordable and reliable assistive listening solution. It supports up to 1000 users and utilizes your existing Wi-Fi network to stream audio directly to users via a free mobile application. This server is ideal for meeting ADA & IBC assistive listening requirements and offers cloud-based management for easy updates and customization.

Key Features

- Supports up to 1000 users simultaneously.
- Provides 2 mono audio channels.
- Features low-latency audio streaming.
- Integrates with existing wireless networks (Wi-Fi).
- Compatible with iOS and Android devices via a dedicated app.
- Cloud-based management for remote administration and customization.

Setup Guide

This section provides instructions for the initial setup of your Listen Everywhere server.

1. Unpacking and Inspection

Carefully remove all components from the packaging. Inspect the server and accessories for any signs of damage. If any damage is found, contact your vendor immediately.

2. Physical Connections

Connect the necessary cables to the rear panel of the LW-100P-02-01 server.



Figure 1: Rear Panel Connections. This image displays the rear panel of the LW-100P-02-01 server, highlighting its connectivity options. From left to right, you can see the Ethernet port (RJ45), a USB Type-A 2.0 port, the 5V DC power input, two sets of RCA audio inputs (Left and Right), and two sets of terminal block connectors for analog audio inputs.

- **Power:** Connect the provided 5V DC power adapter to the power input jack on the rear panel.
- **Network:** Connect an Ethernet cable from your network router or switch to the RJ45 Ethernet port. Ensure your network supports 100 BaseT or 1000 BaseT (gigabit) and has Wi-Fi (802.11n or better with WMM enabled) for client device connectivity.
- **Audio Inputs:** Connect your audio sources (e.g., mixer, sound system) to the RCA (Left/Right) or terminal block audio inputs. The server supports two mono channels.
- **USB:** The USB Type-A 2.0 port is available for future use or specific configurations as per manufacturer instructions.

3. Network Configuration

The server is designed to integrate with your existing Wi-Fi network. It supports DHCP for automatic IP address assignment, or you can configure a static or reserved IP address if required by your network setup. Ensure your Wireless Access Points (WAPs) operate on 2.4 GHz & 5 GHz frequencies and have WMM (Wi-Fi Multimedia) enabled for optimal performance.

Operation

Operating the Listen Everywhere server primarily involves managing it through its cloud-based interface and client interaction via the mobile app.

1. Powering On

Once all connections are made, press the power button on the front panel to turn on the device. The power indicator LED will illuminate.



Figure 2: Front Panel Overview. This image shows the front panel of the LW-100P-02-01 server. On the left, the 'LISTEN EVERYWHERE' logo is visible. In the center, there are two small green LED indicators labeled '1' and '2' for the audio channels. On the right, a prominent circular power button with an illuminated blue ring is present.

2. Cloud-Based Management

Access the Listen Everywhere cloud platform via a web browser to manage your server. From here, you can:

- Monitor server status and connected users.
- Configure audio channels and input levels.
- Customize the in-app experience with welcome messages, videos, and banners.
- Apply firmware updates.

3. Client App Usage

Users download the free Listen Everywhere app from the iOS App Store or Google Play Store. Once installed, they connect to your facility's Wi-Fi network and launch the app to select and listen to the available audio channels.

Maintenance

The Listen Everywhere server is designed for reliable operation with minimal maintenance. Follow these guidelines to ensure longevity:

- **Cleaning:** Use a soft, dry cloth to clean the exterior of the unit. Do not use liquid cleaners or aerosols, as they may damage the components.
- **Ventilation:** Ensure the server is placed in a location with adequate airflow to prevent overheating. Do not block ventilation openings.
- **Environment:** Operate the server within its specified temperature and humidity ranges. Avoid exposure to extreme temperatures, direct sunlight, or moisture.
- **Firmware Updates:** Regularly check the cloud management platform for available firmware updates to ensure optimal performance and access to new features.

Troubleshooting

If you encounter issues with your Listen Everywhere server, try the following basic troubleshooting steps:

- **No Power:** Ensure the power adapter is securely connected to the server and a working power outlet. Check if the power button LED is illuminated.
- **No Audio:** Verify that audio sources are properly connected to the server's inputs. Check the audio input levels in the cloud management platform. Ensure client devices are connected to the correct Wi-Fi

network and the app is functioning.

- **Network Connectivity Issues:** Confirm the Ethernet cable is securely connected. Check your router/switch status. Ensure your network is providing DHCP or that the server's static IP is correctly configured. Verify WAP functionality and WMM enablement.
- **App Connection Problems:** Ensure the client device is connected to the same Wi-Fi network as the server. Restart the app or the client device.
- **Poor Audio Quality:** Check the bandwidth usage on your network. Approximately 140 kbps per user is required. Ensure your WAPs are not overloaded and are 802.11n or better.

For persistent issues, refer to the detailed troubleshooting guides available on the Listen Technologies support website or contact technical support.

Technical Specifications

| Feature | Specification |
|---------------------------|--|
| Model Name | LW 100P 2 |
| Audio Inputs | Two (2) Female RCA (Right, Left), -14 dBu nominal, -2 dBu max, 15k ohm impedance; Analog Terminal Block Connectors |
| Ethernet | RJ45: 100 BaseT or 1000 BaseT (gigabit) |
| USB | Type A 2.0 (female) |
| IP Address Configuration | DHCP, Static, Reserved |
| Prioritization | QoS/ToS |
| Max Users | 1000 (per server) |
| Max Channels | 2 mono |
| WAP Support | 802.11n or better w/WMM enabled |
| Supported WAP Frequencies | 2.4 GHz & 5 GHz |
| Bandwidth Use | Approx. 140 kbps per user |
| App Support | iOS/Android |
| Cloud Service | Yes |
| Regulatory | FCC, CE, RoHS |
| Dimensions (HxWxD) | 45 x 170 x 100mm (1.77" x 6.69" x 3.94") |
| Weight | 0.59 kg (1.3 lbs) |

| Feature | Specification |
|-------------------------|---------------------------|
| Connectivity Technology | Ethernet, RCA, USB, Wi-Fi |
| Audio Output Mode | Mono |
| Mounting Type | Tabletop Mount |


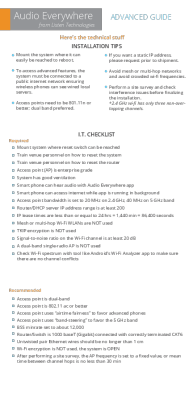
Warranty Information


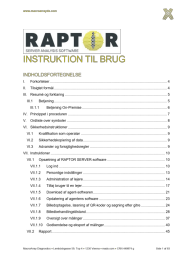
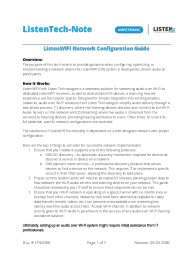

The Listen Everywhere LW-100P-02-01 server comes with a Limited Warranty. Please refer to the official Listen Technologies website or your purchase documentation for specific terms, conditions, and duration of the warranty.

Support


For technical support, product registration, or additional resources, please visit the official Listen Technologies support website. You may also contact their customer service directly for assistance.

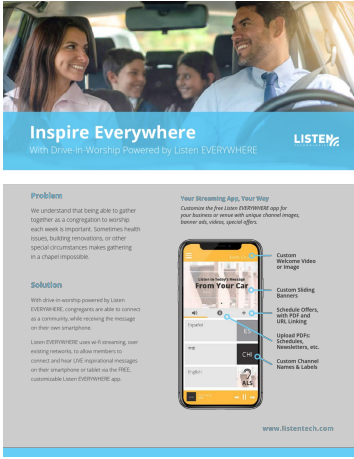
Related Documents - LW-100P-02-01

| | |
|---|--|
|  | <p>Listen Technologies Wi-Fi/RF Combo Compliance Systems Quick Start Guide</p> <p>Quick start guide for Listen Technologies Wi-Fi/RF Combo Compliance Systems, including Audio Everywhere and ListenRF setup, with instructions for LCS-120-01, LCS-120-01-D, LCS-121-01, and LCS-121-01-D models.</p> |
|  | <p>Audio Everywhere Advanced Guide: Installation and Network Specifications</p> <p>Technical guide for Audio Everywhere by Listen Technologies, covering installation tips, IT checklist, network requirements, LAN/WAN ports, and system alerts for optimal setup and performance.</p> |

| | |
|---|--|
|  | <p>Listen Technologies Wi-Fi/RF Audio Systems: LCS & ListenRF Quick Start Guide</p> <p>Quick start guide for Listen Technologies' Wi-Fi/RF Combo Compliance Systems (LCS-120, LCS-121) and ListenRF audio solutions, covering setup for transmitters and receivers.</p> |
|  | <p>RAPTOR SERVER Analysis Software: Brugsanvisning og Funktioner</p> <p>Komplet brugsanvisning til MacroArray Diagnostics RAPTOR SERVER Analysis Software. Lær om opsætning, betjening, analyse, rapportering og fejlfinding af softwaren til laboratoriebrug.</p> |
|  | <p>ListenWIFI Network Configuration Guide - Listen Technologies</p> <p>Technical guide from Listen Technologies providing instructions on configuring, optimizing, and troubleshooting the ListenWIFI audio over Wi-Fi system for seamless audio streaming in public spaces.</p> |
|  | <p>RAPTOR SERVER Analysis Software: Naudojimo Instrukcija</p> <p>Vadovas naudoti RAPTOR SERVER Analysis Software, skirtą laboratoriniams tyrimams, duomenų analizei ir ataskaitų generavimui, sukurtas MacroArray Diagnostics. Apima sąrankos, naudojimo ir trikčių šalinimo instrukcijas.</p> |

Documents - Listen – LW-100P-02-01

| | |
|---|---|
|  | <p>[pdf] Datasheet</p> <p>Product Datasheet Listentech LW 100P 02 Listen EVERYWHERE 2 Channel Wi Fi Audio ServerThe is an affordable and reliable way to deliver channels of audio audiences up 1000 userslw 100p datasheetltb no media multicase documents listen everywhere lw datasheet srsltid</p> <p>AfmBOOpIcd9AQ12hi3MEacHEfH09oraMDqIXHjJUblyFbMrpcWU76GRn ServerLW usersThe datasheetlw AfmBOOpIcd9AQ12hi3MEacHEfH09oraMDqIXHjJUblyFbMrpcWU76GRnltb</p> <p>AfmBOOpFleLZGa s N853lVhgbgBh8h1kgL9Eol19zYLILxIE 2ioy5 LW-100P-02 Listen EVERYWHERE 2 Channel Wi-Fi Audio Server Configuration: LW-100P-02-01 North America, Plug B LW-100P-02-02 United Kingdom, Plug G LW-100P-02-03 European Union, Plug F LW-100P-02-04 Australia, Plug I Product Overview: The Lis</p> <p>LW-100P-02 Listen EVERYWHERE 2 Channel Wi-Fi Audio Server Configuration: LW-100P-02-01 North America, Plug B LW-100P-02-02 United Kingdom, Plug G LW-100P-02-03 European Union, Plug F LW-100P-02-04 Australia, Plug I Product Overview: The Listen EVERYWHERE LW-100P-02 is an affordable and rel...</p> <p>lang:en score:24 filesize: 419.75 K page_count: 3 document date: 2024-05-16</p> |
|---|---|



[\[pdf\]](#) Label

Alt 0 Listen Technologies LW 100P 02 01 Audio Assistive Listening lw100p0201 2 assetserver net assets
listen tech |||

Inspire Everywhere With Drive-in-Worship Powered by Listen EVERYWHERE

Problem We understand that being able to gather together as a congregation to worship each week is important. Sometimes health issues, building renovations, or other special circumstances makes gathering in a chapel impossible. S...

[\[pdf\]](#) Specifications Datasheet

Product Datasheet Listentech Spec Sheet Listen Technologies LW 100P 02 01 Audio Assistive Listening
lw100p0201 spec assetserver net assets listen tech |||

LW-100P-02 Listen EVERYWHERE 2 Channel Server Product Overview: The Listen Everywhere LW-100P-02 is an affordable and reliable way to meet ADA IBC assistive listening requirements for audiences of up to 1000 users. Connect to your existing Wi-Fi network service and stream directly to users through...

lang:en score:22 filesize: 254.78 K page_count: 2 document date: 2019-05-16

[\[pdf\]](#) Specifications Datasheet

Product Datasheet Listentech LW 100P 02 01 Data Sheet Listen Technologies Everywhere 2 Channel
Server Full Compass Systems 42942 LW100P0201DataSheet fullcompass common files |||

LW-100P-02 Listen EVERYWHERE 2 Channel Server Product Overview: The Listen Everywhere LW-100P-02 is an affordable and reliable way to meet ADA IBC assistive listening requirements for audiences of up to 1000 users. Connect to your existing Wi-Fi network service and stream directly to users through...

lang:en score:19 filesize: 319.39 K page count: 2 document date: 2019-12-13



[\[pdf\]](#) Datasheet

Product Datasheet Listentech Datablad eng Listen Technologies EVERYWHERE 2 Kanals Wi Fi Audio
Server Tonax LW 100P 02 tonax dk |||

LW-100P-02 Listen EVERYWHERE 2 Channel Wi-Fi Audio Server Configuration: **LW-100P-02-01** North America, Plug B LW-100P-02-02 United Kingdom, Plug G LW-100P-02-03 European Union, Plug F LW-100P-02-04 Australia, Plug I Product Overview: The Listen EVERYWHERE LW-100P-02 is an affordable and rel...
lang:en score:18 filesize: 419.76 K page_count: 3 document date: 2024-01-04



[\[pdf\]](#) Specifications Datasheet

Product Datasheet Listentech LW 100P 02 01 cdn docs av iq dataSheet ||

LW-100P-02 Listen EVERYWHERE 2 Channel Server Product Overview: The Listen Everywhere LW-100P-02 is an affordable and reliable way to meet ADA IBC assistive listening requirements for audiences of up to 1000 users. Connect to your existing Wi-Fi network service and stream directly to users through...

lang:en score:18 filesize: 319.39 K page_count: 2 document date: 2020-03-10



[\[pdf\]](#) Specifications Datasheet

Product Datasheet Listentech Listen EVERYWHERE 2 Channel Wi Fi Audio Server LW 100P 02

Specification Power Supply Connector DC Barrel Input Voltage 100 240 VAC 50 60Hz Output 5 VDC

Current 6 0 A 30 W Configurations 01 North American Plug B United Kingdom G 03 European Union F av
ampetronic 2023 12 |||

LW-100P-02 Listen EVERYWHERE 2 Channel Wi-Fi Audio Server Configuration: **LW-100P-02-01** North America, Plug B LW-100P-02-02 United Kingdom, Plug G LW-100P-02-03 European Union, Plug F LW-100P-02-04 Australia, Plug I Product Overview: The Listen EVERYWHERE LW-100P-02 is an affordable and rel...
 lang:en score:17 filesize: 419.76 K page_count: 3 document date: 2023-12-05

