

Garmin ECHOMAP Ultra 106sv

Garmin ECHOMAP Ultra 106sv User Manual

Model: ECHOMAP Ultra 106sv (Part Number: 010-02112-00)

Brand: Garmin

1. INTRODUCTION

The Garmin ECHOMAP Ultra 106sv is a marine chartplotter and sonar combo unit designed for fishing and navigation. It features a bright, sunlight-readable 10-inch keyed-assist touchscreen display. This unit provides integrated support for premium Garmin sonars and comes preloaded with BlueChart g3 coastal charts and LakeVü g3 inland maps, which include integrated Navionics data and Auto Guidance technology. Auto Guidance is intended for planning purposes only and does not replace safe navigation practices. Transducers are sold separately.

2. WHAT'S IN THE BOX

Verify that all components are present in the packaging:

- ECHOMAP Ultra 106sv unit with preloaded BlueChart g3 and LakeVü g3 for U.S.
- Power/data cable
- Tilt mount with quick release cradle
- Flush mount kit
- Protective cover
- Hardware for mounting
- Documentation (this manual and other guides)

3. KEY FEATURES

The ECHOMAP Ultra 106sv offers a range of functionalities to enhance your marine experience:

- 10-inch keyed-assist touchscreen display.
- Built-in support for premium sonar capabilities, including Panoptix LiveScope scanning sonar system (transducer sold separately).
- Preloaded Garmin BlueChart g3 coastal charts and LakeVü g3 inland maps with integrated Navionics data.
- Auto Guidance technology for route planning (for planning purposes only).
- Ability to share sonar, waypoints, and routes with other compatible ECHOMAP Ultra (10-inch and 12-inch) and

ECHOMAP Plus (7-inch and 9-inch) units.

- Built-in Quickdraw Contours mapping software for creating personalized fishing maps with 1-foot contours.
- Integrated Wi-Fi connectivity for pairing with the free ActiveCaptain app.
- NMEA 2000 connectivity for integration with heading sensors, autopilots, digital switching, FUSION-Link audio systems, and more.

4. SETUP AND INSTALLATION

Proper installation is crucial for optimal performance. Refer to the included installation instructions for detailed diagrams and safety information.

4.1 Mounting the Device

The ECHOMAP Ultra 106sv can be installed using either the provided tilt mount with a quick-release cradle or the flush mount kit. Choose a location that offers clear visibility, protection from excessive sunlight and moisture, and allows for proper cable routing.



Includes all-in-one transducer for CHIRP traditional and Ultra High-Definition ClearVü and SideVü scanning sonars.

Image: The ECHOMAP Ultra 106sv unit shown mounted on a boat, illustrating a typical installation scenario.

4.2 Power and Data Connections

Connect the power/data cable to a 12 Vdc power source on your vessel. Ensure all connections are secure and waterproof. If connecting to a transducer (sold separately), follow the transducer's specific installation instructions and connect it to the

appropriate port on the ECHOMAP Ultra 106sv.

4.3 Initial Power-On and Setup

Upon first power-on, the device will guide you through initial setup steps, including language selection, unit preferences (e.g., feet/meters, Fahrenheit/Celsius), and chart region selection. Follow the on-screen prompts to complete this process.

5. OPERATING INSTRUCTIONS

The ECHOMAP Ultra 106sv combines touchscreen functionality with physical keys for intuitive control.

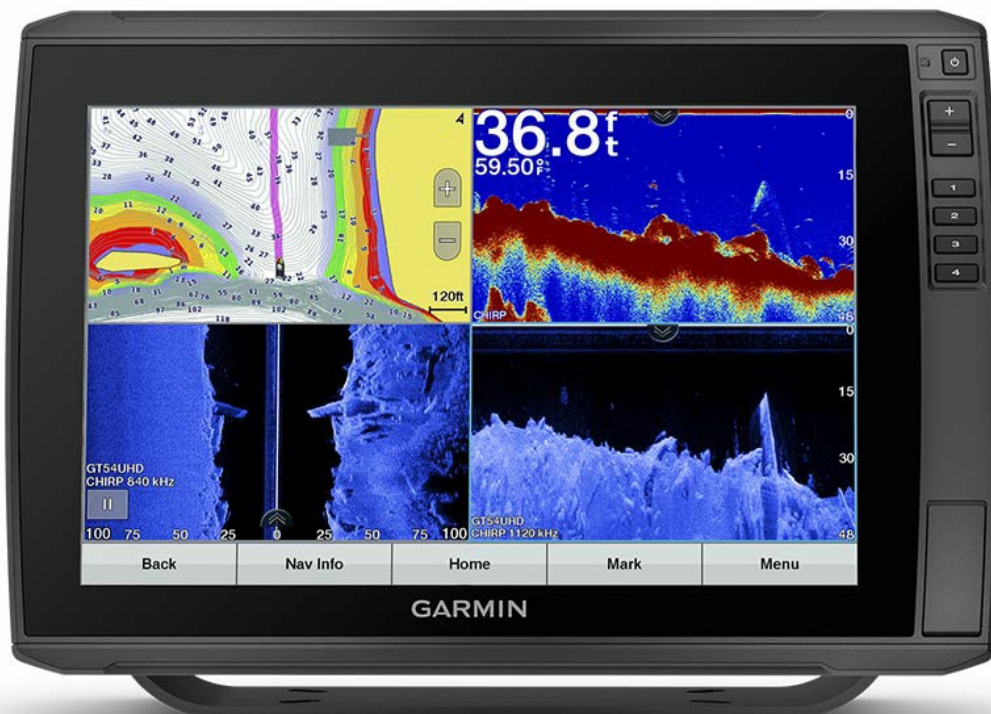


Image: The ECHOMAP Ultra 106sv display showing a split screen with chartplotter and sonar data, demonstrating typical operation.

5.1 Basic Navigation and Menus

- **Touchscreen:** Tap to select items, swipe to pan maps, pinch to zoom.
- **Keyed-Assist:** Use the physical buttons on the right side for quick access to common functions like zoom, menu, and home.
- **Home Screen:** Access all major functions and customizable layouts from the Home screen.

5.2 Sonar Functions

With a compatible transducer, the unit supports various sonar views:

- **Traditional CHIRP Sonar:** Provides clear target separation and definition.
- **ClearVü Scanning Sonar:** Shows a nearly photographic image of what is below your boat.
- **SideVü Scanning Sonar:** Displays a clear image of what is to the sides of your boat.
- **Panoptix LiveScope:** Provides real-time, live scanning sonar images (requires compatible Panoptix LiveScope transducer).



Supports all Panoptix sonars, including the Panoptix LiveScope System and LiveScope LVS12 transducer (transducers sold separately).

Image: The ECHOMAP Ultra 106sv displaying a LiveScope sonar view, showing underwater structures and fish in real-time.

5.3 Chartplotter Functions

Utilize the preloaded charts for navigation:

- **BlueChart g3 / LakeVü g3:** Detailed coastal and inland maps with integrated Navionics data.
- **Auto Guidance:** Suggests a path to your destination, avoiding shallow water and other charted obstructions (use with caution).
- **Quickdraw Contours:** Create and store personalized fishing maps with 1-foot contours as you navigate.



Preloaded with LakeVü g3 inland maps and BlueChart g3 coastal charts — both featuring Navionics data and Auto Guidance technology.¹

¹Auto Guidance is for planning purposes only and does not replace safe navigation operations

Image: Two Garmin ECHOMAP Ultra units side-by-side on a boat console, displaying detailed marine charts for navigation.

5.4 ActiveCaptain App Integration

Connect your ECHOMAP Ultra 106sv to the free ActiveCaptain app on your mobile device via Wi-Fi for features such as:

- Smart notifications.
- Access to OneChart for purchasing and downloading new maps.
- Software updates.
- Quickdraw Community data sharing.

6. MAINTENANCE

Regular maintenance ensures the longevity and optimal performance of your ECHOMAP Ultra 106sv.

6.1 Cleaning the Device

- **Screen:** Gently wipe the screen with a clean, soft, lint-free cloth. For stubborn smudges, use a screen cleaner specifically designed for electronic displays. Avoid abrasive cleaners or solvents.
- **Unit Casing:** Clean the casing with a mild detergent solution and a soft cloth. Rinse thoroughly with fresh water and

dry.

6.2 Software Updates

Garmin regularly releases software updates to improve performance and add new features. You can update the device software using the ActiveCaptain app or by downloading updates to an SD card from the Garmin website.

6.3 Connection Checks

Periodically inspect all cable connections (power, data, transducer) for corrosion or damage. Ensure they are securely fastened and properly sealed to prevent water ingress.

7. TROUBLESHOOTING

If you encounter issues with your ECHOMAP Ultra 106sv, try the following troubleshooting steps:

- **Device Not Powering On:** Check the power cable connection to the unit and the vessel's power source. Verify the fuse in the power cable.
- **No Sonar Display:** Ensure the transducer is correctly connected to the unit and submerged in water. Check transducer settings in the sonar menu.
- **GPS Not Acquiring Signal:** Ensure the unit has a clear view of the sky. Allow several minutes for the GPS receiver to acquire satellites.
- **Touchscreen Unresponsive:** Try restarting the device. If the issue persists, ensure the screen is clean and dry.
- **Software Issues:** Perform a software update via the ActiveCaptain app or an SD card. If necessary, perform a factory reset (note: this will erase user data).

For more detailed troubleshooting or persistent issues, refer to the comprehensive support resources available on the Garmin website or contact Garmin customer support.

8. SPECIFICATIONS

Key technical specifications for the Garmin ECHOMAP Ultra 106sv:

Model Number:

010-02112-00

Product Dimensions:

11.6 x 7.7 x 3.9 inches

Item Weight:

4 pounds

Screen Size:

10 Inches

Human Interface Input:

Touchscreen

Connectivity Technologies:

Wi-Fi, NMEA 2000

Operating System:

Garmin proprietary

Map Type:

Freshwater, Oceania (BlueChart g3, LakeVü g3)

Vehicle Service Type:

Boat

Manufacturer:

Garmin

Date First Available:

March 14, 2019

9. WARRANTY AND SUPPORT

For warranty information, please refer to the warranty card included with your product or visit the official Garmin website. Garmin provides a limited warranty for its products against defects in materials and workmanship.

For technical support, product registration, or to access additional manuals and software updates, please visit the Garmin support website. You can also contact Garmin customer service directly for assistance.

Garmin Support Website: www.garmin.com/support