

SinoTrack

SinoTrack ST-901L 4G GPS Tracker User Manual

Model: ST-901L

1. INTRODUCTION

The SinoTrack ST-901L is a compact and waterproof 4G GPS tracker designed for real-time location tracking of vehicles such as cars, motorcycles, trucks, and taxis. It features advanced connectivity with LTE, GSM, and GPS capabilities, ensuring reliable tracking and monitoring. This device offers functionalities like remote engine cut-off, movement alerts, and historical route playback, providing comprehensive security and management for your assets.



Figure 1: SinoTrack ST-901L 4G GPS Tracker and its mobile application interface.

2. SAFETY INFORMATION

- Ensure proper wiring connections to prevent damage to the device or vehicle electrical system.
- Do not attempt to disassemble or modify the device, as this may void the warranty and cause malfunction.
- Keep the device away from extreme temperatures, direct sunlight, and corrosive substances.
- Install the device in a secure location within the vehicle where it is protected from physical damage and tampering.
- Use only the specified SIM card type (4G/LTE) and ensure it is activated and has data/SMS capabilities.

3. PACKAGE CONTENTS

Verify that all items are present in the package:

- SinoTrack ST-901L 4G GPS Tracker (1 unit)
- Relay (1 unit)
- User Manual (1 unit)
- Double-sided sticker (1 unit)



Figure 2: Included components of the SinoTrack ST-901L package.

4. PRODUCT FEATURES

- **4G Network Connectivity:** Supports LTE, GSM, and GPS with dual antennas for robust signal reception.
- **ACC Ignition Detection:** Monitors vehicle ignition status.
- **Remote Engine Cut-Off:** Ability to remotely disable the vehicle's engine via SMS command (requires relay

connection).

- **Waterproof Design:** Ensures durability and protection against water exposure.
- **Built-in Backup Battery:** 150mAh battery provides 1-2 hours of operation in case of main power loss.
- **Real-Time Tracking:** Accurate location tracking (up to 10 meters) via GPS satellites and network.
- **Lifetime Free Tracking Platform:** Access to SinoTrackPRO web platform and mobile app for real-time monitoring and data.
- **History Route Playback:** Stores up to 2 years of tracking history for review.
- **Alerts and Notifications:** Receives alerts for movement (ACC alarm), speeding, geofence breaches, low battery, and shocking.



Figure 3: Key features and dimensions of the ST-901L tracker.

5. SETUP GUIDE

5.1 SIM Card Activation

1. Purchase a local 4G (LTE) SIM card.
2. Insert the new SIM card into your mobile phone.
3. Activate the SIM card and ensure its PIN code is removed.
4. Verify that the SIM card can make calls, send texts, and has an active internet connection.
5. Once confirmed, remove the SIM card from your phone.

5.2 Device Preparation

1. Unscrew the lid of the tracker and open it.
2. Insert the activated SIM card into the designated slot.
3. Charge the device for approximately 1 hour.
4. Turn on the device. The yellow and blue indicator lights will flash while searching for network and GPS signals. Wait for both lights to become constant, which indicates a stable connection. If the yellow light continues to flash, move the device to an area with better network reception.

How to install the GPS tracker?

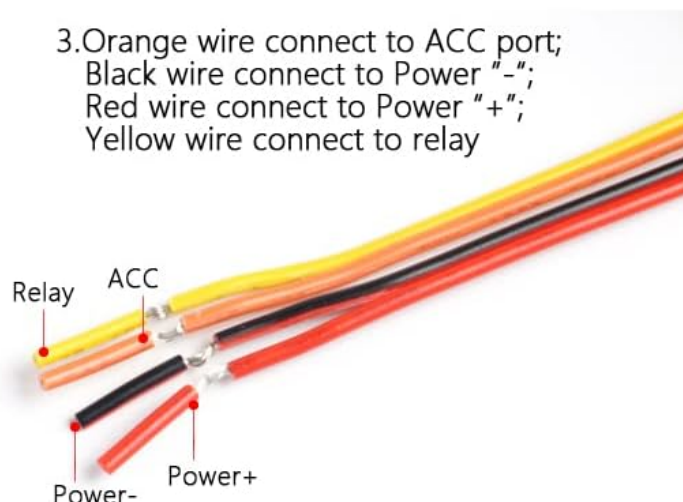
1. Unscrew the screw and open the lid



2. Plug-in SIM card (SIM card not include)



3. Orange wire connect to ACC port;
Black wire connect to Power "-";
Red wire connect to Power "+";
Yellow wire connect to relay



5.3 APN Settings (via SMS)

The tracker requires APN (Access Point Name) settings for internet connectivity. Obtain your SIM card's APN details from your provider.

- If your SIM card's APN does not require a username or password, send the following SMS command to the tracker's SIM card number:

```
8030000 [APN]
```

Example: 8030000 everywhere

- If your APN requires a username and password, send the following SMS command:

```
8030000 [APN] [APN user] [APN pass]
```

Example: 8030000 everywhere eesecure secure

- The tracker should reply with "SET OK" upon successful configuration.

5.4 GPRS Mode Setting (via SMS)

To enable GPRS mode for online tracking, send the following SMS command to the tracker:

```
7100000
```

After about 30 seconds, both the blue and orange lights on the device should stay ON, indicating that GPRS mode is active and the device is ready for online tracking.

6. OPERATING THE TRACKER

6.1 Online Tracking Platform

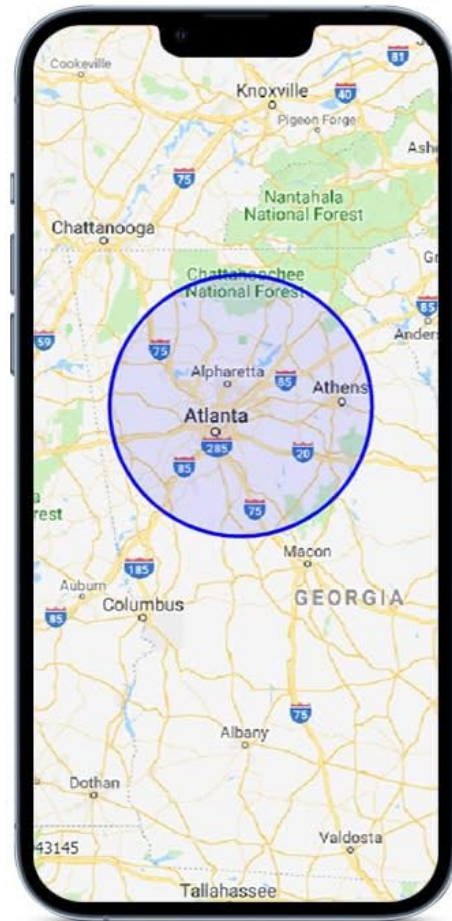
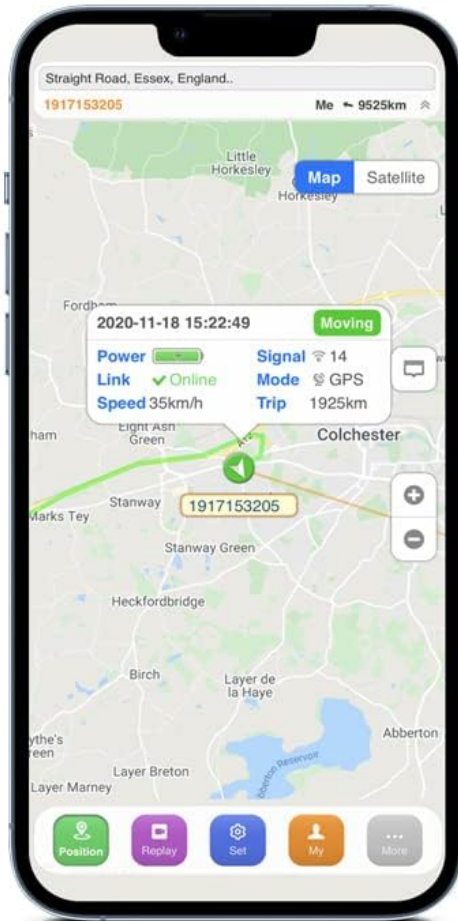
Access the SinoTrackPRO tracking platform via web browser or download the SinoTrack Pro GPS APP on your tablet, PC, or phone. Use your tracker's ID number (found on the product label) as the username and "123456" as the default password to log in.

- **Real-Time Tracking:** View the current location of your vehicle on a map.
- **History Route Playback:** Review past routes and activities for up to two years.
- **Geofence:** Set up virtual boundaries and receive alerts when the vehicle enters or exits these areas.
- **Alerts:** Monitor various alerts such as movement, speeding, low battery, and shocking.

Real-Time Tracking



Geofence



Support free App to use

Track in real time with our free APP available for iPhone and Android

Figure 5: Real-time tracking and geofence features on the SinoTrack mobile app.

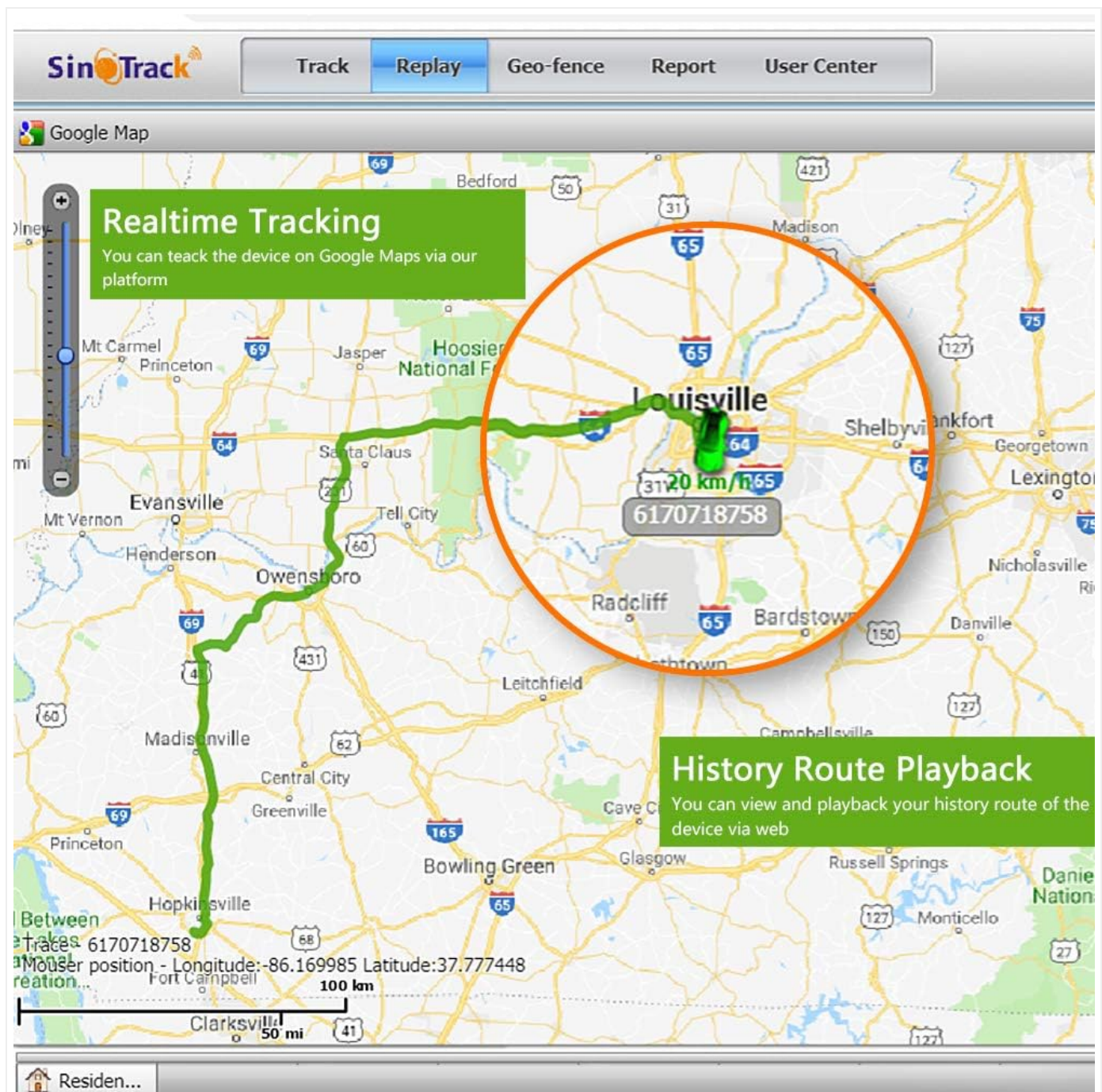


Figure 6: History route playback on the SinoTrack web platform.

History Route Playback

View and playback your daily tracking history anytime and anywhere



Figure 7: History route playback details on the SinoTrack mobile app.

6.2 Remote Engine Cut-Off

If your vehicle is stolen, you can remotely cut off its engine by sending an SMS command to the tracker. The vehicle will stop moving within 10-20 seconds if its speed is below 20 KM/h when the command is received.

9400000

Note: This function requires the yellow wire to be correctly connected to your car's relay during installation.

7. INSTALLATION

The ST-901L is designed for easy installation. Refer to the wiring diagram below for proper connection to your vehicle's

electrical system.

Wiring Connections

Wire Color	Connection Point	Function
Orange	ACC Port	Ignition detection
Black	Power "-" (Ground)	Negative power supply
Red	Power "+"	Positive power supply
Yellow	Relay	Engine cut-off control

Ensure all connections are secure and insulated to prevent short circuits. It is recommended to have this installed by a qualified professional if you are unsure about vehicle electrical systems.

8. MAINTENANCE

- Regularly check the device's connection to the vehicle's power supply to ensure continuous operation.
- Keep the device clean and free from dust and debris. Use a soft, dry cloth for cleaning.
- Ensure the SIM card remains active and has sufficient credit/data for uninterrupted tracking services.
- Periodically check the device's status lights to confirm proper network and GPS signal acquisition.

9. TROUBLESHOOTING

Common Issues and Solutions

Problem	Possible Cause	Solution
Device not online / No location data	Incorrect APN settings, no network signal, SIM card issues, device not powered on.	Send "RCONF" SMS command to check current settings (APN, IP, Port). Verify SIM card is active and has data. Ensure device is in an area with good 4G/GSM coverage. Take the device outside to acquire GPS signal if showing China location. Check power connections.
Lights not turning constant	No network or GPS signal.	Move the device to an open area or a location with better signal reception. Ensure SIM card is properly inserted.
Remote engine cut-off not working	Incorrect relay wiring, vehicle speed too high.	Verify the yellow wire is correctly connected to the relay. Ensure vehicle speed is below 20 KM/h when sending the command.
Inaccurate location	Weak GPS signal, LBS positioning.	Ensure the device has a clear view of the sky for optimal GPS signal. Location accuracy improves with strong GPS signal.

10. SPECIFICATIONS

- **Model:** ST-901L
- **Network:** 4G (LTE), GSM, GPRS
- **GPS Accuracy:** Up to 10 meters
- **Dimensions:** 1.24 x 0.79 x 0.16 inches
- **Weight:** 3.87 ounces
- **Battery:** 150mAh Lithium Polymer (included)
- **Operating Voltage:** 9-80V DC (typical for vehicle use)
- **Special Features:** Waterproof, Remote Engine Cut-off, ACC Detection
- **Supported Application:** SinoTrackPRO

11. OFFICIAL PRODUCT VIDEOS

SinoTrack ST-901L 4G tracker with relay

Your browser does not support the video tag.

This video provides an overview of the SinoTrack ST-901L 4G tracker, demonstrating its features and the included relay for engine cut-off functionality.

SINOTRACK ST-901 Vehicle Car GPS Tracker, Anti Lost Alarm Locator Mini Real-Time Location Device

Your browser does not support the video tag.

This video highlights the real-time location tracking capabilities and anti-lost alarm features of the SinoTrack ST-901 GPS tracker, showcasing its use as a mini locator device.


12. WARRANTY AND SUPPORT






SinoTrack provides a lifetime free tracking platform service for the ST-901L GPS tracker. For any technical support or inquiries, please refer to the contact information provided with your product packaging or visit the official SinoTrack website.

As an original manufacturer, SinoTrack is committed to product quality and customer satisfaction. Specific warranty terms and conditions may vary; please consult your purchase documentation for details.

© 2024 SinoTrack. All rights reserved.

Related Documents -

	<p>SinoTrack ST-901 4PIN GPS Tracker (ST-901L 4G) User Manual</p> <p>Comprehensive user manual for the SinoTrack ST-901 4PIN and ST-901L 4G GPS trackers. This guide covers quick setup, web and mobile tracking, SIM card installation, LED status indicators, wiring instructions, and a full list of SMS commands for configuring features like geo-fencing, speed alerts, battery warnings, ACC ignition alerts, remote engine cut-off, APN settings, IP/Port configuration, and time interval reporting. Learn how to effectively monitor and manage your vehicle with the SinoTrack GPS device.</p>
---	---

<p>GPS Tracker ST-906GL User Manual</p>  <p>1</p>	<p>SinoTrack ST-906GL GPS Tracker User Manual</p> <p>Comprehensive user manual for the SinoTrack ST-906GL GPS Tracker, covering quick start, website and mobile app tracking, installation, device functions, and other features.</p>
<p>GPS Tracker ST-901L (ST-901L 4G) User Manual</p>  <p>Quick Start Check the packaging for CE/ETL/FCC The device has been tested for safety and security. WARNING: Handling Precautions</p> <p>1</p>	<p>SinoTrack ST-901L 4G GPS Tracker User Manual</p> <p>Comprehensive user manual for the SinoTrack ST-901L 4G GPS Tracker, covering quick start, online tracking, mobile app usage, installation, SMS commands, and advanced functions for vehicle and asset tracking.</p>
<p>SinoTrack GPS TRACKER USER MANUAL</p>  <p>PREFACE</p> <p>Thank you for purchasing SinoTrack GPS tracker. This manual shows how to operate the device correctly to make your work easy to read this manual carefully before using the device. Please be aware that any content of the manual is made without prior notice. Also, the title of the manual will be retained in the legal product name. The manufacturer shall assume the legal responsibility for any errors or omissions made in this manual.</p> <p>1</p>	<p>SinoTrack GPS Tracker User Manual - Models ST-903 & ST-904</p> <p>Comprehensive user manual for SinoTrack GPS Trackers ST-903 and ST-904, covering setup, SMS tracking, alarm settings, online tracking, and troubleshooting for accurate real-time location monitoring.</p>
<p>SinoTrack GPS TRACKER ST-904/ST-904L 4G User Manual</p>  <p>1</p>	<p>SinoTrack GPS Tracker ST-904/ST-904L 4G User Manual</p> <p>Comprehensive user manual for the SinoTrack ST-904 and ST-904L 4G GPS trackers, covering setup, operation, online tracking, SMS commands, and troubleshooting for accurate real-time location monitoring.</p>
<p>GPS Tracker ST-909 User Manual</p>  <p>1</p>	<p>GPS Tracker ST-909 User Manual</p> <p>This user manual provides detailed instructions for setting up, operating, and configuring the SinoTrack GPS Tracker ST-909, including SMS commands, tracking modes, and device functions.</p>