

[Manuals.plus](#) /

> [Anivia](#) /

> Anivia Upgraded Full HD 1080P Webcam (Model Anivia-5-Webcams) User Manual

Anivia Anivia-5-Webcams

Anivia Upgraded Full HD 1080P Webcam (Model Anivia-5-Webcams) User Manual

INTRODUCTION

This manual provides detailed instructions for the setup, operation, and maintenance of your Anivia Upgraded Full HD 1080P Webcam. Please read this manual thoroughly before using the product to ensure proper functionality and to maximize your user experience.

PRODUCT OVERVIEW

The Anivia Full HD 1080P Webcam is designed for high-quality video communication and recording. Key features include:

- **Full HD 1080P Video:** Delivers sharp, smooth video at 30 frames per second for video conferencing, recordings, and live streaming.
- **High Pixel CMOS Sensor:** Ensures high definition and stable performance, even in low-light conditions.
- **Noise Cancellation Microphone:** Built-in microphone captures clear audio within 8 meters, providing clear sound quality for dialogue.
- **Privacy Protection Cover:** A physical cover blocks the lens when the webcam is not in use, enhancing security and privacy.
- **Versatile Mounting:** Features a 360° rotatable head and a 180° adjustable base for easy placement on various displays or surfaces.
- **Manual Focus Lens:** Allows for precise adjustment of sharpness to achieve optimal image clarity.
- **Wide Compatibility:** Supports Windows 7/8/10, Mac OS 10.6 or later, Chrome OS, and Android v4.0 or above. Compatible with PCs, laptops, desktops, and Android TVs.



Figure 1: Anivia Webcam Front View with Key Features

PACKAGE CONTENTS

Verify that all items are present in your package:

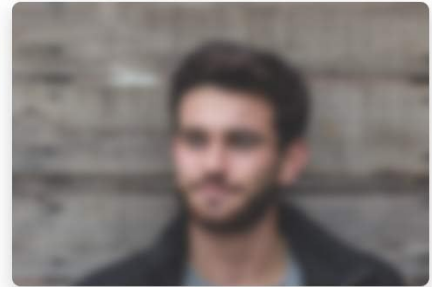
- Anivia Full HD 1080P Webcam
- User Manual (this document)

SETUP INSTRUCTIONS

1. **Placement:** Open the webcam's flexible clip/base. Mount the webcam securely on top of your computer monitor, laptop screen, or place it on a flat surface. Adjust the angle as needed.

Manual Focus Lens

The sharpness is adjusted to the best before out of the factory, it is stable and does not need to be adjusted frequently.



before fixing



adjusted

Figure 2: Webcam Placement and Adjustment

2. **Connect to Computer:** Plug the USB connector of the webcam into an available USB 2.0 port on your computer (PC, laptop, or Android TV).

Versatile Compatibility

Support multiple software and systems



Figure 3: USB Connection

- 3. Driver Installation (Plug & Play):** The webcam is designed for plug-and-play operation. Your operating system (Windows, macOS, Chrome OS, Android) should automatically detect and install the necessary drivers within a few moments. No manual driver installation is typically required.
- 4. Privacy Cover:** Ensure the privacy cover is open before use. Slide it closed when the webcam is not in use to protect your privacy.

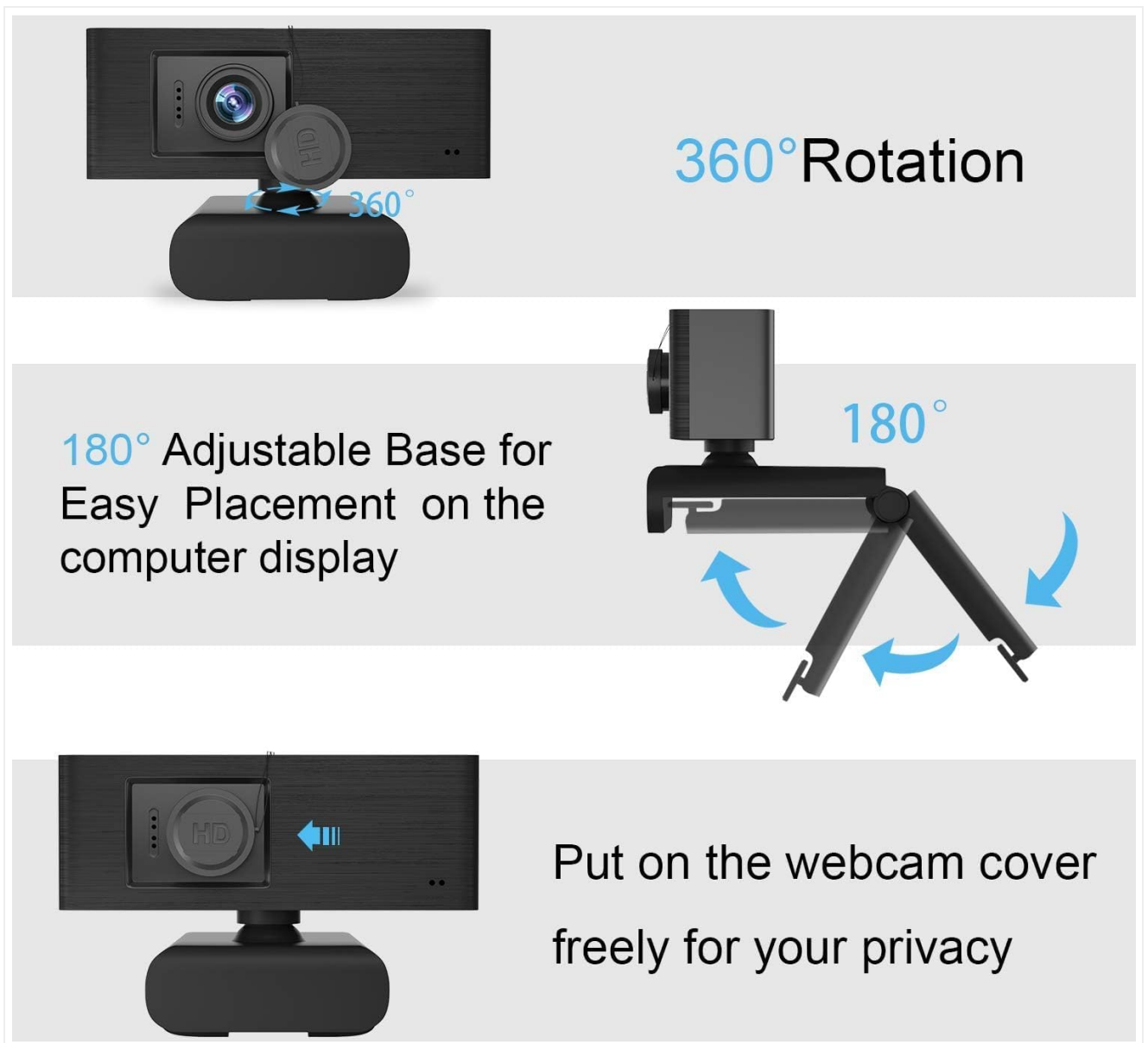


Figure 4: Privacy Cover in Closed Position

OPERATING INSTRUCTIONS

1. **Initiating Video:** Once connected, open your preferred video conferencing software (e.g., Zoom, Skype, Microsoft Teams, Google Meet) or recording application. Select the Anivia webcam as your video and audio input device in the application's settings.

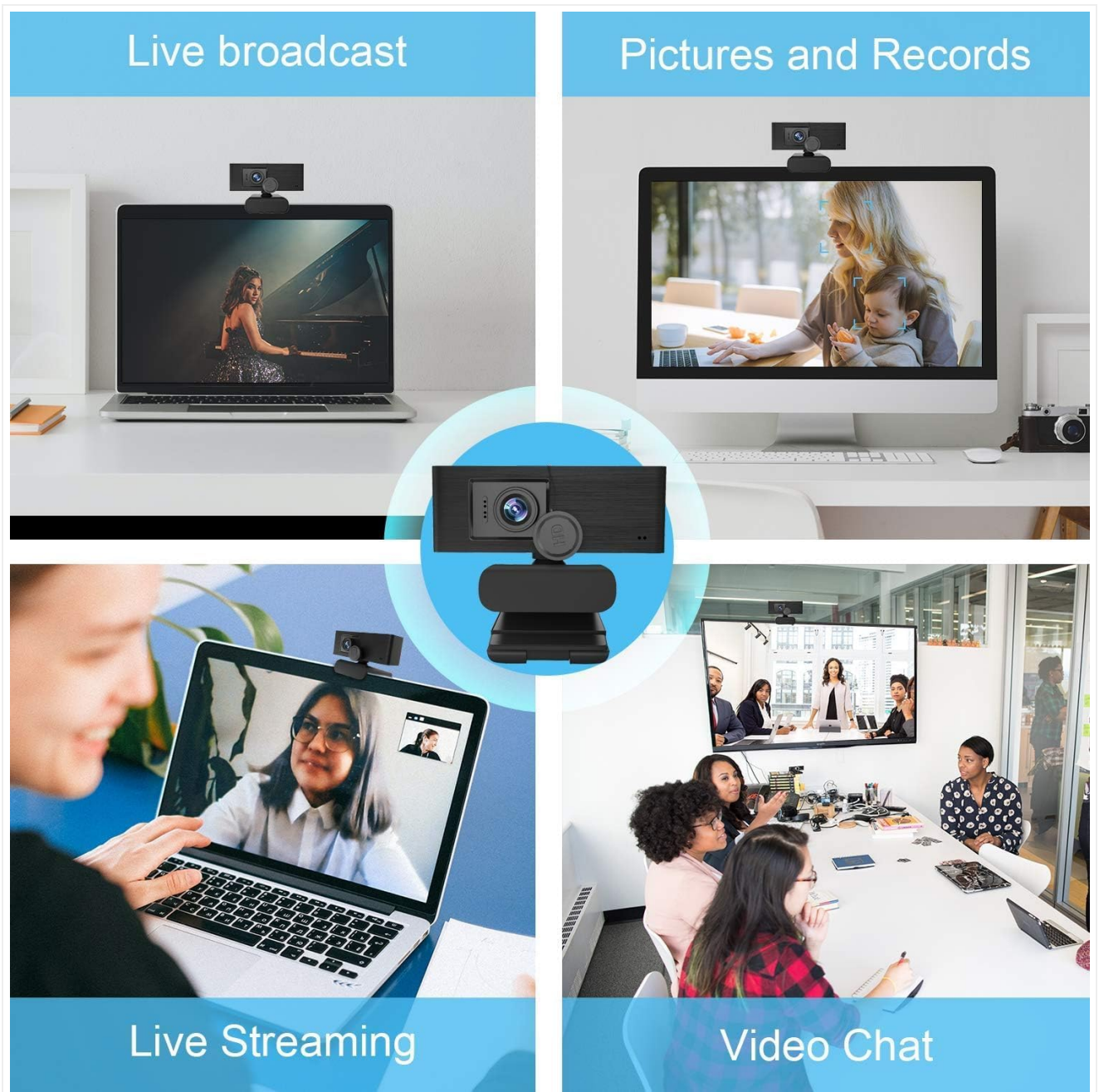


Figure 5: Webcam in Various Usage Scenarios

2. **Adjusting Focus:** The webcam features a manual focus lens. If the image appears blurry, gently rotate the lens ring until the image becomes sharp and clear. This adjustment is typically stable and does not require frequent changes once set.



Figure 6: Manual Focus Adjustment

3. **Microphone Usage:** The built-in noise-cancelling microphone will automatically activate when the webcam is selected as the audio input. Ensure your software's audio settings are configured to use the webcam's microphone.
4. **Privacy Cover:** Always slide the privacy cover over the lens when the webcam is not in active use to prevent unintended recording and ensure your privacy.

MAINTENANCE

- **Cleaning the Lens:** Use a soft, dry, lint-free cloth to gently wipe the webcam lens. Avoid using harsh chemicals or abrasive materials, which can scratch the lens.
- **Cleaning the Body:** Wipe the webcam body with a slightly damp cloth. Ensure no moisture enters the device.
- **Storage:** When not in use for extended periods, store the webcam in a cool, dry place, ideally with the privacy cover closed to protect the lens.

TROUBLESHOOTING

Problem	Possible Cause	Solution
Webcam not detected by computer.	Loose USB connection. Faulty USB port. Operating system privacy settings.	Ensure the USB cable is firmly plugged into both the webcam and the computer. Try connecting the webcam to a different USB port on your computer. Check your operating system's privacy settings to ensure applications are allowed to access the camera and microphone. (e.g., for Windows 10: Settings > Privacy > Camera/Microphone). Restart your computer.
No video output.	Privacy cover is closed. Incorrect webcam selected in software.	Slide the privacy cover open. In your video application's settings, ensure the Anivia webcam is selected as the video input device.
No audio from microphone.	Incorrect microphone selected in software. Operating system privacy settings.	In your video application's settings, ensure the Anivia webcam's microphone is selected as the audio input device. Check your operating system's privacy settings to ensure applications are allowed to access the microphone.
Blurry image.	Focus not adjusted. Dirty lens.	Gently rotate the manual focus lens ring until the image is clear. Clean the lens with a soft, lint-free cloth.

SPECIFICATIONS

Feature	Detail
Brand	Anivia
Model Number	Anivia-5-Webcams
Video Capture Resolution	1080p Full HD
Effective Still Resolution	2 MP
Photo Sensor Technology	CMOS
Connectivity Technology	USB 2.0
Focus Type	Manual Focus
Built-in Microphone	Yes, with Noise Cancellation
Operating System Compatibility	Windows 7/8/10, Mac OS 10.6+, Chrome OS, Android v4.0+
Compatible Devices	PCs, Laptops, Android TVs
Item Weight	3.5 Ounces
Color	Black + Silver

WARRANTY INFORMATION

The Anivia Upgraded Full HD 1080P Webcam comes with a limited warranty. Please refer to the warranty card included in your product packaging or contact customer support for specific details regarding the warranty period and coverage.

CUSTOMER SUPPORT

If you encounter any issues or have questions not covered in this manual, please contact Anivia customer support. Contact information can typically be found on the product packaging or the official Anivia website.

