

ECOELER CDR616D-930**-20

ECOELER 6-inch Dimmable LED Disk Light Instruction Manual

Model: CDR616D-930**-20

1. ABOUT YOUR ECOELER LED DISK LIGHT

The ECOELER 6-inch Dimmable LED Disk Light is a high-quality, energy-efficient lighting solution designed for various indoor applications. This fixture provides bright, warm white illumination and features a low-profile design for seamless integration into your ceiling.

- **High Quality:** Features a 7.3-inch round metal light cover for corrosion protection and rust prevention. Equipped with high-quality LED chips, it delivers 1000 lumens at 16.5 watts, ensuring well-balanced light with no flickering and an estimated lifespan of 50,000 hours.
- **Smooth Dimmable:** Offers a full range of seamless dimming from 5% to 100%, allowing precise control over brightness for any situation, from a soft night glow to bright task lighting.
- **Low Profile Design:** The ultra-thin 0.9-inch design provides a sleek look, ideal for spaces with low ceilings or for achieving a modern aesthetic.
- **Wide Applications:** Suitable for damp locations, making it perfect for entrances, living rooms, bedrooms, kitchens, dens, and covered outdoor areas.
- **Safety Assured:** ETL and FCC listed, ensuring compliance with safety and quality standards.

5/6" LED DISKLIGHT

FITS RECESSED CAN OR J-BOX
ALL INSTALLATION ACCESSORIES INCLUDED

4
colors



White



Brown



Black



Nickel



ECOELER®



Living room



Kitchen



Corridor



Bedroom



Study room



More other

Image: ECOELER LED Disk Lights providing bright, uniform illumination in a modern kitchen and dining area. The image highlights the light's brightness and suitability for various home spaces.

2. PACKAGE CONTENTS

Verify that all components are present before beginning installation:

- LED Disk Light Fixture (4 units)
- E26 Adapter and Spring Clips
- Installation Screws (Short and Long)
- Wire Nuts
- Instruction Manual

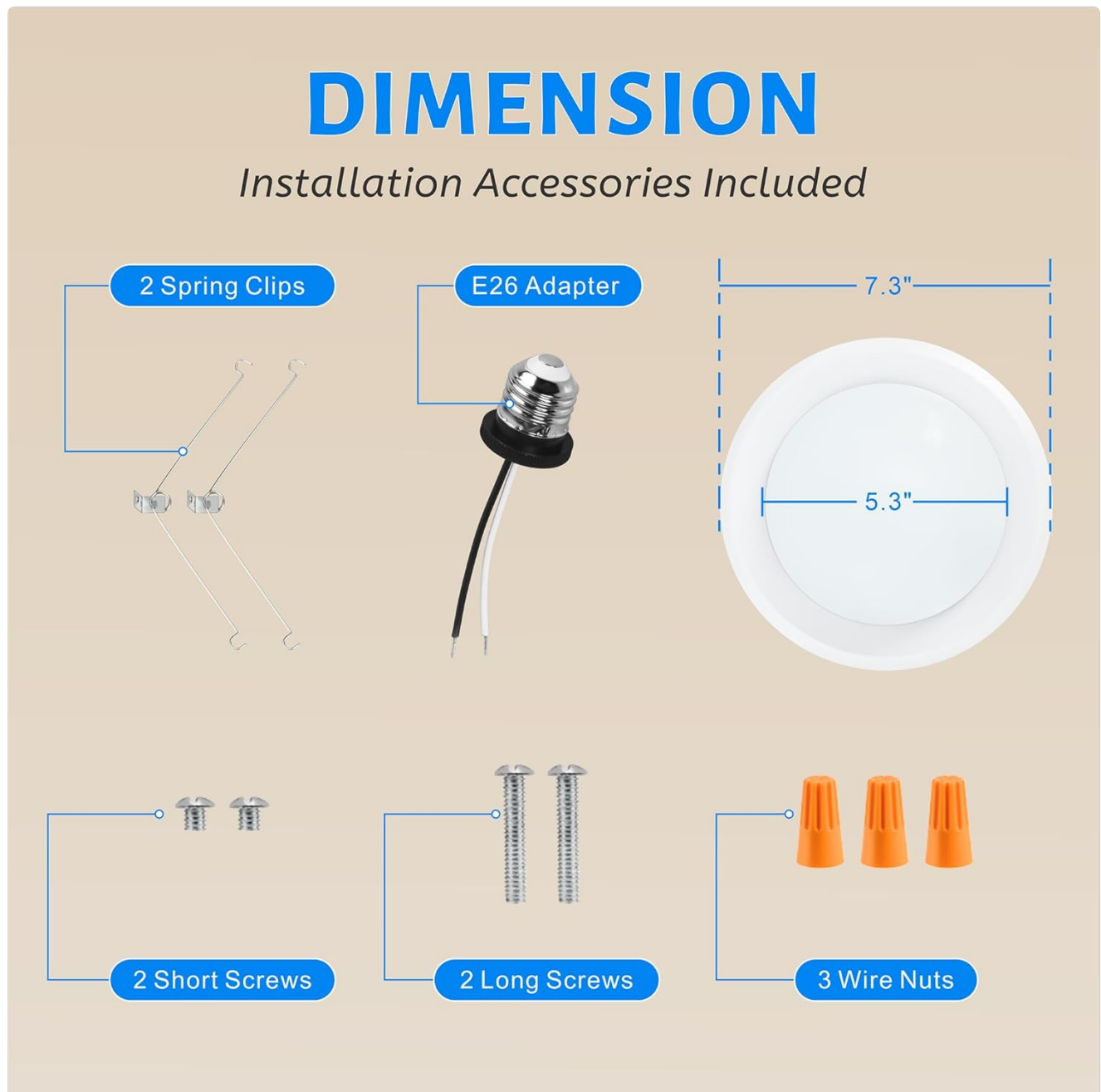


Image: A detailed diagram illustrating the dimensions of the LED disk light (7.3" diameter, 0.9" thickness) and all included installation accessories: 2 spring clips, E26 adapter, 2 short screws, 2 long screws, and 3 wire nuts.

3. SAFETY INFORMATION

Please read and understand all instructions before installing or operating this product. Failure to do so may lead to electric shock, fire, or other hazards that could cause injury or property damage.

- **WARNING:** Risk of electric shock. Disconnect power at the fuse or circuit breaker before installing or servicing.
- **WARNING:** Risk of fire. Use only in circuits rated for 120V AC.
- This product must be installed in accordance with the applicable installation code by a person familiar with the construction and operation of the product and the hazards involved.
- Ensure all electrical connections are secure and correct.
- Do not modify the fixture or use it for any purpose other than its intended use.
- Do not handle the fixture with wet hands.
- Suitable for damp locations.

4. INSTALLATION INSTRUCTIONS

The ECOELER LED Disk Light can be installed into either a standard junction box or a recessed can (5-inch or 6-inch).

4.1. Junction Box Installation

1. **Turn off power:** Ensure power is disconnected at the circuit breaker before starting.
2. **Remove the lens:** Gently twist the light lens counter-clockwise to remove it from the fixture base.
3. **Connect wiring:** Connect the supply wires from the junction box to the fixture wires using the provided wire nuts (black to black, white to white, ground to ground).
4. **Attach fixture to junction box:** Align the fixture base with the junction box and secure it using the provided screws.
5. **Reattach lens:** Twist the lens clockwise onto the fixture base until secure.
6. **Restore power:** Turn power back on at the circuit breaker.

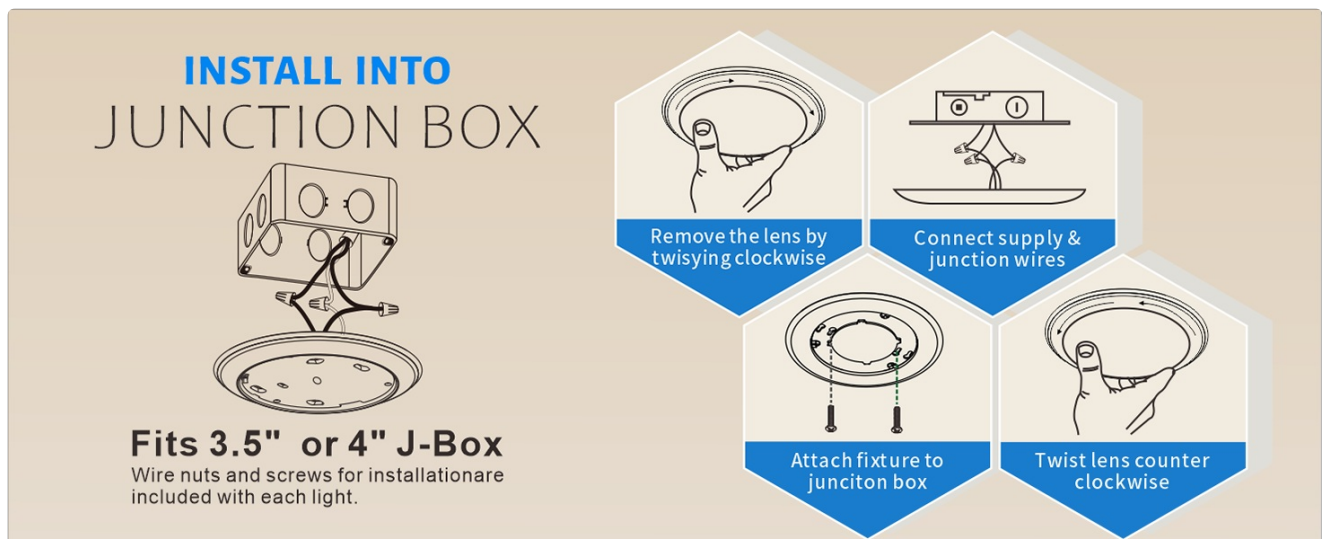


Image: Step-by-step visual guide for installing the ECOELER LED Disk Light into a 3.5" or 4" junction box. It shows removing the lens, connecting wires, attaching the fixture, and twisting the lens back on.

4.2. Recessed Can Installation

1. **Turn off power:** Ensure power is disconnected at the circuit breaker before starting.
2. **Remove the lens:** Gently twist the light lens counter-clockwise to remove it from the fixture base.

3. **Install E26 adapter:** Screw the E26 adapter into the existing recessed can socket.
4. **Connect wiring:** Connect the fixture wires to the E26 adapter wires using the provided wire nuts (black to black, white to white).
5. **Install spring clips:** Attach the spring clips to the designated slots on the fixture base.
6. **Push disk into can:** Carefully push the LED disk light into the recessed can until the spring clips hold it securely in place, flush with the ceiling.
7. **Reattach lens:** Twist the lens clockwise onto the fixture base until secure.
8. **Restore power:** Turn power back on at the circuit breaker.



Image: Step-by-step visual guide for installing the ECOELER LED Disk Light into a 5" or 6" recessed can. It shows removing the lens, installing the E26 adapter, connecting wires, attaching spring holders, pushing the disk into the can, and twisting the lens back on.

5. OPERATING INSTRUCTIONS

The ECOELER LED Disk Light is designed for simple operation and offers smooth dimming capabilities.

5.1. Turning On/Off

Operate the light using a standard wall switch connected to the fixture's circuit.

5.2. Dimming Function

This fixture is compatible with most standard LED dimmers, allowing for smooth brightness adjustment from 5% to 100%. To dim the light, use a compatible dimmer switch (not included) installed in your electrical system.



Image: A visual representation of the smooth dimming range of the ECOELER LED Disk Light, showing a gradual transition from 5% (dark) to 100% (bright) illumination, suitable for various ambiance settings.

6. MAINTENANCE

The ECOELER LED Disk Light requires minimal maintenance.

- **Cleaning:** To clean the fixture, ensure power is off. Use a soft, dry, or slightly damp cloth. Do not use harsh chemicals or abrasive cleaners, as they may damage the finish or electrical components.
- **No User-Serviceable Parts:** The LED light source is integrated and not user-replaceable. Do not attempt to disassemble the fixture.

7. TROUBLESHOOTING

If you experience issues with your ECOELER LED Disk Light, refer to the following common problems and solutions:

Problem	Possible Cause	Solution
Light does not turn on	No power to the fixture; loose wiring; faulty switch.	Check circuit breaker/fuse. Ensure all wire connections are secure. Test the switch.
Light flickers	Incompatible dimmer switch; loose wiring; voltage fluctuations.	Ensure dimmer is LED compatible. Check wiring connections. Consult an electrician for voltage issues.
Light is too dim or too bright	Dimmer setting; incorrect light color temperature (if applicable to other models).	Adjust the dimmer switch. This model is 3000K Warm White; ensure it matches your preference.
Buzzing noise	Incompatible dimmer switch.	Replace with a high-quality, LED-compatible dimmer switch.

If problems persist, contact ECOELER customer support for assistance.

8. SPECIFICATIONS

Feature	Specification
Brand	ECOELER
Model Name	LED Disc Light
Item Model Number	CDR616D-930**-20
Color Temperature	3000K Warm White
Wattage	16.5 Watts
Brightness	1000 Lumens
Voltage	110 Volts (AC)
Dimmable	Yes (5%-100% Smooth Dimmable)
Material	Acrylic, Aluminum
Product Dimensions	7.25"L x 7.25"W x 0.95"H
Item Weight	9.6 ounces
Installation Type	Flush Mount (Recessed Can or Junction Box)
Indoor/Outdoor Usage	Indoor (Suitable for damp locations)
Lifespan	50,000 hours
Certifications	ETL Listed, CEC, FCC
Color Rendering Index (CRI)	90.00

9. WARRANTY AND SUPPORT

ECOELER products are designed for quality and durability. This product comes with a limited warranty.

- **Warranty:** Refer to the product packaging or ECOELER's official website for specific warranty terms and conditions.
- **Customer Support:** If you encounter any problems during use or have questions regarding installation or operation, please contact ECOELER customer service. We aim to provide a reply within 24 hours.