

Sorbus WD-NTSHLV

Sorbus Floating Shelves (Model WD-NTSHLV) Instruction Manual

Model: WD-NTSHLV | Brand: Sorbus

1. INTRODUCTION

Thank you for choosing Sorbus Floating Shelves. This manual provides essential information for the safe and proper installation, use, and maintenance of your new floating shelves. Please read these instructions carefully before assembly and retain them for future reference.



Image: Sorbus Floating Shelves (3-Pack, Grey) with one shelf demonstrating the invisible bracket system.

2. SAFETY INFORMATION

Adherence to these safety guidelines is crucial for preventing injury and damage to the product or property.

- Always follow general safety guidelines for assembling and mounting shelves.
- Use appropriate tools and wall anchors suitable for your wall type (e.g., drywall, stud, concrete).
- **Do not exceed the maximum weight limit of 22 pounds (10 kg) per shelf.** Overloading can cause the shelf to detach from the wall, leading to damage or injury.
- Ensure the shelves are securely mounted before placing any items on them.
- Keep small parts and hardware away from children to prevent choking hazards.

3. PACKAGE CONTENTS

Verify that all components are present before beginning assembly:

- Floating Shelves (3 units)
- Mounting Brackets (3 units)
- Screws (8 per shelf, total 24)
- Wall Anchors (8 per shelf, total 24)

- Wood Textured Screw Hole Covers (2 per shelf, total 6)
- Instruction Manual



Installation is a Breeze

All installation parts
are included in the box



5 Minute
Assembly

1.

A hand is using an orange power drill to attach a black metal bracket to a wall. Below the drill are a silver screw and a yellow wall anchor.

X 8

X 8

Attach Bracket to Wall

2.

A hand is sliding a wooden shelf onto a black metal bracket that is already attached to a wall.

X 2

Wood Textured Screw Hole Covers

Slide Shelf on Bracket

3.

A hand is using an orange power drill to secure a wooden shelf to a black metal bracket. A silver screw is shown next to the drill.

X 2

Secure Shelf to Bracket

Image: Visual representation of included hardware and installation steps.

4. SPECIFICATIONS

Feature	Detail
Model Name	WD-NTSHLV
Product Dimensions (each)	16.25" L x 5.5" W x 1.5" H
Number of Shelves	3
Weight Limit (per shelf)	22 Pounds (10 kg)
Material	MDF with PVC
Assembly Required	Yes
Installation Type	Wall Mount



Floating Shelves for Wall

Invisible Bracket



Image: Detailed dimensions and weight capacity of the floating shelf.

5. SETUP AND INSTALLATION

Installation is designed to be straightforward. Please ensure you have the necessary tools (e.g., drill, level, pencil) before starting.

1. **Mark Placement:** Choose the desired location on your wall. Use a level and pencil to mark the positions for the mounting brackets. Ensure the marks are level and spaced correctly for the shelf length.
2. **Drill Holes:** Drill pilot holes at the marked locations. Insert the wall anchors into the pilot holes.
3. **Attach Bracket:** Secure the mounting bracket to the wall using the provided screws, ensuring it is firmly attached and level.
4. **Slide Shelf:** Carefully slide the floating shelf onto the installed bracket. The shelf is designed to fit snugly over the bracket for a seamless appearance.
5. **Secure Shelf:** Once the shelf is in place, use the smaller screws to secure the shelf to the bracket from the underside or designated points.
6. **Conceal Screws:** Apply the wood textured screw hole covers over any visible screw heads for a finished look.



Image: Step-by-step visual guide for shelf installation.

6. USAGE AND DISPLAY

These floating shelves are versatile and can be used in various rooms to enhance storage and decor. Remember to distribute weight evenly and not exceed the 22-pound limit per shelf.

- **Living Room:** Display decorative items, small plants, or framed photos.
- **Bedroom:** Hold books, small lamps, or personal keepsakes.
- **Bathroom:** Store toiletries, towels, or decorative accents.
- **Kitchen:** Organize spices, small jars, or display kitchen decor.
- **Office:** Keep small office supplies, books, or decorative elements tidy.



Image: Example of shelves used for storage and decor in a bathroom setting.



Image: Example of shelves used for storage and decor in a kitchen setting.

7. CARE AND MAINTENANCE

To maintain the appearance and longevity of your Sorbus Floating Shelves:

- **Cleaning:** Wipe the shelves with a dry, soft cloth. Avoid abrasive cleaners or harsh chemicals, as these can damage the finish.
- **Moisture:** While the shelves have a PVC finish, prolonged exposure to excessive moisture should be avoided. Promptly wipe away any spills.
- **Inspection:** Periodically check the mounting hardware to ensure screws remain tight and the shelves are securely attached to the wall.

8. TROUBLESHOOTING

If you encounter any issues during or after installation, consider the following:

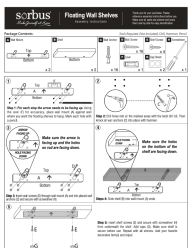
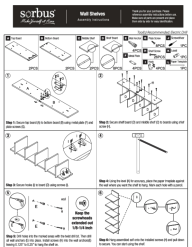

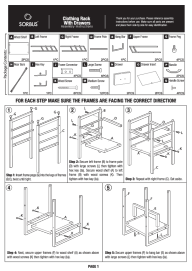
- **Shelf is not level:** Ensure the mounting bracket was installed perfectly level. Adjust if necessary.
- **Shelf feels loose:** Re-check all screws securing the bracket to the wall and the shelf to the bracket. Ensure appropriate wall anchors were used for your wall type.
- **Difficulty sliding shelf onto bracket:** Ensure the bracket is not bent and the shelf's internal channel is clear. Do not force the shelf; gently align it.
- **Shelf sags:** Verify that the weight on the shelf does not exceed the 22-pound limit. Redistribute items or remove excess weight.

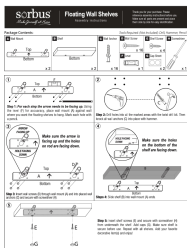
9. WARRANTY AND SUPPORT

For any questions, concerns, or support regarding your Sorbus Floating Shelves, please contact Sorbus customer service. Refer to your purchase documentation for specific warranty details, as these may vary. You can typically find contact information on the manufacturer's website or through the retailer where the product was purchased.

[Visit the Sorbus Store for more information](#)

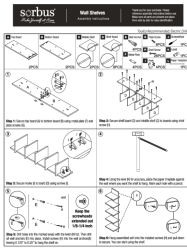
Related Documents - WD-NTSHLV

	<p>Sorbus Floating Wall Shelves Assembly Instructions</p> <p>Step-by-step guide to assembling and installing Sorbus Floating Wall Shelves, including package contents and required tools.</p>
	<p>Sorbus Wall Shelves Assembly Instructions - DIY Home Decor</p> <p>Step-by-step guide for assembling Sorbus Wall Shelves. Includes parts list, tools, and detailed instructions for easy installation of your new home decor shelving unit.</p>
	<p>Sorbus Modern Tree Book Shelf - Stylish Home Storage Solution</p> <p>Discover the Sorbus Modern Tree Bookshelf, a sleek and functional statement piece designed to elevate your storage and display options in any contemporary space. This unique tree-shaped bookshelf offers a stylish way to organize books and decor.</p>
	<p>SORBUS Clothing Rack With Drawers: Assembly Instructions & Guide</p> <p>Comprehensive assembly instructions for the SORBUS Clothing Rack With Drawers (Model DRW-CR-PI). Includes parts list, step-by-step assembly, and wall mounting guide for safe installation.</p>



[Sorbus Floating Wall Shelves Assembly Instructions](#)

Step-by-step guide to assembling and installing Sorbus Floating Wall Shelves, including package contents and required tools.



[Sorbus Wall Shelves Assembly Instructions - DIY Home Decor](#)

Step-by-step guide for assembling Sorbus Wall Shelves. Includes parts list, tools, and detailed instructions for easy installation of your new home decor shelving unit.