

## Manuals+

[Q & A](#) | [Deep Search](#) | [Upload](#)

Manuals.plus /

› [Walfront](#) /

› Walfront SMART Sensor AS1392 EMF Meter User Manual

## Walfront AS1392

# Walfront SMART Sensor AS1392 EMF Meter User Manual

Model: AS1392

## INTRODUCTION

---

This user manual provides detailed instructions for the operation and maintenance of the Walfront SMART Sensor AS1392 EMF Meter. This device is designed to detect electromagnetic fields (EMF) and measure ambient temperature, offering a reliable tool for environmental monitoring. Please read this manual thoroughly before using the device to ensure safe and correct operation.

## PRODUCT OVERVIEW

---

### Key Features

- **Dual Measurement:** Capable of testing both electric and magnetic field radiation.
- **Temperature Measurement:** Measures environmental temperature in both Celsius (°C) and Fahrenheit (°F).
- **Alarm Function:** Features sound and light alarms that activate when detected radiation levels exceed a preset safe value.
- **Clear Display:** Equipped with a large, high-definition LCD screen for easy reading of measurements.
- **Data Retention:** Includes a one-button function to lock the current radiation value for review.
- **Portability:** Designed for simple, one-handed operation and easy on-site measurement.

### Component Identification



**Figure 1:** Front view of the Walfront AS1392 EMF Meter with key components labeled. This image highlights the sensor position, LCD display, Mili Gauss / Micro Tesla switch button, ON/OFF button, and °C / °F switch button. The battery door is also indicated on the back.

## Application Scenarios

# Multiple Scene Detection



**Mobile Computer  
Equipment Detection**



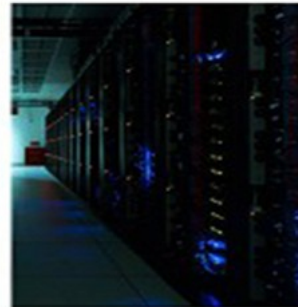
**Plug-in Device Detection**



**Products Testing**



**High Voltage  
Line Detection**



**Server Detection**



**Home Equipment  
Detection**

**Figure 2:** Examples of environments where the EMF meter can be used, including mobile computer equipment, plug-in devices, general products, high voltage lines, server rooms, and home appliances. This illustrates the versatility of the device for detecting electromagnetic radiation in various settings.

## SETUP

### Battery Installation

The Walfront AS1392 EMF Meter requires three (3) 1.5V AAA batteries (not included) for operation. Follow these steps to install the batteries:

1. Locate the battery compartment cover on the back of the device.
2. Slide the cover downwards or unclip it to open the compartment.
3. Insert three AAA batteries, ensuring correct polarity (+/-) as indicated inside the compartment.
4. Replace the battery compartment cover, ensuring it clicks securely into place.



## Features:

1. The EMF tester has two uses, testing both electric and magnetic field radiation.
2. This product can measure the radiation of high voltage power lines, electrical appliances and wires.
3. Sound and light alarm, when the test result exceeds the safe value, the instrument will automatically alarm.
4. Data retention and maximum measurement, one button to lock the radiation value.
5. Large and clear LCD display screen for easy reading.
6. Simple operation, easy to operate with one hand, easy to carry and on-site measurement.
7. The environment temperature can be measured in two temperature units (°C and °F)

**Figure 3:** Rear view of the EMF meter showing the open battery compartment, ready for AAA battery insertion. This image also lists key features of the device.

## OPERATING INSTRUCTIONS

### Power On/Off

- To turn on the device, press and hold the **ON/OFF button** (power symbol) until the LCD screen illuminates.
- To turn off the device, press and hold the **ON/OFF button** again until the screen turns off.

### Measurement Modes

The device automatically begins measuring electric and magnetic fields, as well as temperature, upon power-on. The sensor position is located at the top of the device.

## Magnetic Field/Electric Field Dual Measurement

It can detect the strength of magnetic field/electric field, and it can also measure the temperature of the current environment. Sensitive response, alarm value can be set, and there are sound and light alarm prompts.

### Magnetic Field Detection



### Electric Field Detection



### Temperature Measurement



Beware of Electromagnetic Radiation



Figure 4: The EMF meter displaying both magnetic field and electric field detection capabilities, along with temperature measurement. A warning symbol for electromagnetic radiation is also shown.

## Unit Switching

- **Magnetic/Electric Field Units:** Press the **MG/UT button** to switch between milliGauss (mG) and microTesla ( $\mu\text{T}$ ) units for electromagnetic field readings.
- **Temperature Units:** Press the **°C/°F button** to toggle between Celsius ( $^{\circ}\text{C}$ ) and Fahrenheit ( $^{\circ}\text{F}$ ) for temperature display.

## Backlight and Data Hold

- **Backlight:** Briefly press the **Mode button** to turn the LCD backlight on or off, improving visibility in different lighting conditions.
- **Data Hold:** Press and hold the **Mode button** to activate the data hold function, which locks the current readings on the display. Press again to release.

## Alarm Function

The device features an intelligent alarm system. If the detected electromagnetic radiation exceeds the preset safe value, the instrument will automatically trigger a sound and light alarm. This provides immediate notification of potentially high radiation levels.



**Figure 5:** The EMF meter's high-definition LCD screen showing a high reading (red display indicating alarm) and the intelligent alarm security guard feature. This instrument supports electric field/magnetic field alarm value setting.

## MAINTENANCE

- **Cleaning:** Use a soft, dry cloth to clean the device. Do not use abrasive cleaners or solvents.
- **Storage:** Store the device in a cool, dry place away from direct sunlight and extreme temperatures. If storing for extended periods, remove the batteries to prevent leakage.
- **Battery Replacement:** Replace batteries when the low battery indicator appears on the display to ensure accurate readings.
- **Avoid Impact:** Protect the device from drops and strong impacts, which can damage internal components.

## TROUBLESHOOTING

### Common Issues and Solutions

- **Device does not power on:**
  - Check if batteries are installed correctly with the right polarity.
  - Replace with fresh AAA batteries.
- **Inaccurate or fluctuating readings:**
  - Ensure the device is held steadily and away from other electronic devices that might interfere with readings.
  - Verify that the sensor position is correctly oriented towards the source of measurement.
- **Display is dim or unreadable:**
  - Check battery level and replace if low.
  - Activate the backlight by briefly pressing the Mode button.

- **Alarm sounds continuously:**

- This indicates high electromagnetic radiation. Move away from the source or investigate the environment.
- Ensure the alarm threshold is set appropriately (if adjustable, though this model's setting is fixed at 40mG/0.4μT).

## SPECIFICATIONS



### Specification:

Condition: 100% Brand New
Brand: SMART SENSOR
Model: AS1392
Material: ABS Plastic
Unit: mG (Electric Field); uT(Magnetic Field)
Accuracy: ±5%(50Hz or 60Hz), uT(50uT to 200uT)
Range: Electric: 0~2000mG; Magnetic: 0~200μT
Resolution: 1mG, 0.1μT
Alarm Threshold: 40mG, 0.4μT
Temperature: 0~50°C/ 32~122°F
Display: 4-Digit LCD Display
Test Bandwidth: 30Hz-300Hz
Number Of Axes: Single Axis Sensor Head
Sample Rate: 0.5 Seconds
Test Mode: Dual Mode Synchronous Test
Overrange Indication: LCD Displays "HI"
Working Temperature: 0~40°C
Relative Humidity 0~80%
Storage Temperature: -10~50°C
Relative Humidity: 0~70%
Power: 3 * 1.5V AAA Battery(not included)
Weight: Approx. 108g / 3.8oz
Size: Approx. 130 * 50 * 27mm / 5.1 * 2.0 * 1.1in

Package List:1 \* EMF Meter

**Figure 6:** A comprehensive table detailing the technical specifications of the Walfront AS1392 EMF Meter.

Specification	Detail
Model	AS1392
Material	ABS Plastic
Unit	mG (Electric Field); μT (Magnetic Field)
Accuracy	±5% (50Hz or 60Hz), μT (50μT to 200μT)
Range (Electric)	0~2000mG
Range (Magnetic)	0~200μT
Resolution	1mG, 0.1μT
Alarm Threshold	40mG, 0.4μT
Temperature Range	0~50°C / 32~122°F
Display	4-Digit LCD Display

Specification	Detail
Test Bandwidth	30Hz-300Hz
Number Of Axes	Single Axis Sensor Head
Sample Rate	0.5 Seconds
Test Mode	Dual Mode Synchronous Test
Overrange Indication	LCD displays "HI"
Working Temperature	0~40°C
Relative Humidity (Operating)	0~80%
Storage Temperature	-10~50°C
Relative Humidity (Storage)	0~70%
Power	3 * 1.5V AAA Battery (not included)
Weight	Approx. 108g / 3.8oz
Size	Approx. 130 * 50 * 27mm / 5.1 * 2.0 * 1.1in

## WARRANTY AND SUPPORT

---

Specific warranty information for the Walfront SMART Sensor AS1392 EMF Meter is not provided in the product details. For warranty claims, technical support, or service inquiries, please contact the retailer or manufacturer directly using the contact information provided at the time of purchase. Retain your proof of purchase for any warranty-related requests.