



Manuals.plus /

› **Outsunny** /

› Outsunny 10' x 20' Pop Up Canopy Tent with Netting (American Flag Print) Instruction Manual

Outsunny 10' x 20' Pop Up Canopy Tent with Netting

Outsunny 10' x 20' Pop Up Canopy Tent with Netting

MODEL: AMERICAN FLAG PRINT

1. Safety Information

This canopy tent is designed for sun shade purposes only. It should **NEVER** be left erected in windy, rainy, or snowy conditions. Always collapse the tent when the weather is windy to prevent damage or injury.

2. Package Contents

- Pop Up Canopy Frame (Alloy Steel)
- Canopy Top (Oxford Cloth, American Flag Print)
- Mesh Netting Sidewalls (with zippered doors)
- Carry Bag
- Ropes
- Stakes

3. Setup Instructions

Follow these steps for proper assembly. It is recommended to have at least two people for setup.

1. **Unfold the Frame:** Carefully pull the frame outwards from its collapsed position until it is partially open.
2. **Attach the Canopy Top:** Place the American Flag Print canopy top over the partially opened frame. Secure the corners and edges to the frame using the attached fasteners.
3. **Extend the Frame:** With the canopy top in place, continue to extend the frame until it is fully open and locked into position. Ensure all locking mechanisms click securely.
4. **Adjust Height:** The canopy features a 3-level adjustable height mechanism. Press the buttons on the legs to select your desired height. Ensure all legs are set to the same height for stability.
5. **Attach Mesh Sidewalls:** Connect the mesh netting sidewalls to the canopy frame using the hook and

loop fasteners. The sidewalls feature zippered doors for easy access.

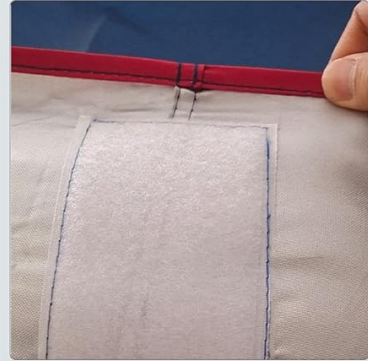
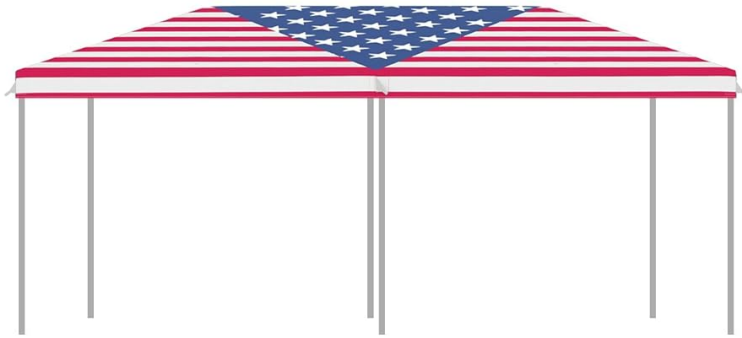
6. **Secure the Canopy:** Use the provided stakes and ropes to anchor the canopy firmly to the ground. This is crucial for stability, especially in light wind conditions.



Image: The Outsunny 10' x 20' Pop Up Canopy Tent with Netting, American Flag Print, fully set up in a backyard patio area.

REMOVABLE MESH SIDEWALLS

☪ Good ventilation ✓ Effective protection



Hook & Loop
easy to connect

Image: Close-up view of the removable mesh sidewalls, showing the hook and loop connection points for easy attachment to the canopy frame.

3-LEVEL

Adjustable height for your different needs

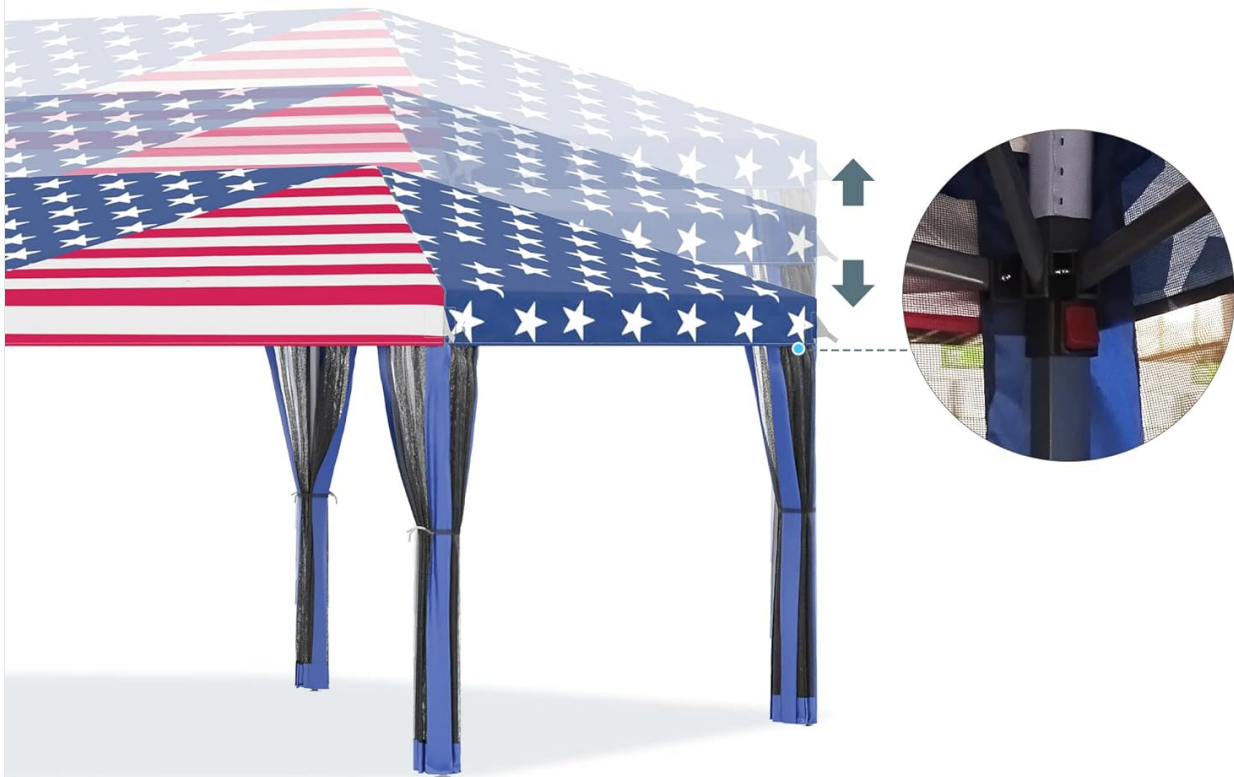


Image: Diagram illustrating the 3-level adjustable height feature of the canopy legs, allowing users to customize the tent's height.

Your browser does not support the video tag.

Video: An overview of the Outsunny Pop Up Canopy, demonstrating its features and ease of setup. This video is provided by Aosom Direct.

Your browser does not support the video tag.

Video: A detailed demonstration of setting up the Outsunny 10' x 20' Pop Up Canopy Tent with Netting. This video is provided by Aosom Direct.

Your browser does not support the video tag.

Video: A promotional video showcasing the Outsunny 10' x 20' Pop Up Canopy Tent with Netting and its various uses. This video is provided by Aosom Direct.

4. Operating Instructions

- **UV Protection:** The oxford cloth canopy provides ultraviolet light protection, offering shade and reducing exposure to harmful UV rays.
- **Ventilation and Insect Protection:** The attached mesh screens allow for air circulation while keeping insects out. The zippered doors provide convenient entry and exit.

- **Adjustable Height:** Utilize the 3-level adjustable legs to customize the canopy's height according to your needs.

5. Maintenance

- **Cleaning:** Clean the canopy fabric and mesh screens with mild soap and water. Rinse thoroughly and allow to air dry completely before storage.
- **Frame Care:** The alloy steel frame is powder-coated for rust resistance. Inspect the frame periodically for any signs of wear or damage.
- **Storage:** When not in use, or during adverse weather conditions, collapse the canopy and store it in the provided carry bag in a dry place.

6. Troubleshooting

- **Instability in Wind:** Ensure the canopy is properly anchored with all stakes and ropes. For added stability, consider using additional weights on the legs. Always collapse the tent in strong winds.
- **Water Pooling on Top:** This canopy is not water-resistant and is primarily for sun shade. Water pooling can occur during rain. It is recommended to collapse the tent during rainy conditions to prevent damage to the frame and fabric.
- **Difficulty in Setup/Takedown:** Ensure all locking pins are fully engaged or disengaged. Lubricate moving parts of the frame if necessary. Always follow the setup instructions and have sufficient personnel for assistance.

7. Specifications

| | |
|---------------------------------------|---|
| Brand | Outsunny |
| Model | 10' x 20' Pop Up Canopy Tent with Netting (American Flag Print) |
| Material | Alloy Steel (Frame), Oxford Cloth (Canopy) |
| Product Dimensions (L x W x H) | 231.5"L x 116.5"W x 102.25"H |
| Item Weight | 51.7 Pounds |
| Water Resistance Level | Not Water Resistant |
| Ultraviolet Light Protection | Yes |
| Assembly Required | Yes |
| Included Components | Bag, Rope, Stake |

8. Warranty and Support

This Outsunny Pop Up Canopy Tent comes with a **1-Year Manufacturer Warranty**. For any product support or warranty claims, please contact Aosom LLC directly.

Additional protection plans are available for purchase:

- 2-Year Protection Plan: \$44.99
- 3-Year Protection Plan: \$56.99
- Complete Protect (Monthly): \$16.99