

Deal4GO Type-C-Port

Deal4GO Replacement USB-C Charging Port for Nintendo Switch Console (Model HAC-001)

Instruction Manual

1. INTRODUCTION

This manual provides detailed instructions for the installation and use of the Deal4GO Replacement USB-C Charging Port, designed specifically for the Nintendo Switch console (model HAC-001). This component is intended to replace a damaged or non-functional original USB-C port, addressing issues such as charging failures, inability to recognize chargers, or communication problems with the docking station.

Compatibility: This replacement part is compatible only with the original Nintendo Switch console (model HAC-001). It is **not** compatible with Nintendo Switch OLED or Nintendo Switch Lite consoles.

2. SAFETY INFORMATION AND PRECAUTIONS

Installation of this component requires advanced technical skills, including micro-soldering and the use of a hot air rework station. Attempting this repair without proper tools and expertise can result in permanent damage to your Nintendo Switch console or personal injury.

- Always disconnect the console from all power sources before beginning any repair.
- Use appropriate personal protective equipment, such as anti-static wrist straps and safety glasses.
- Ensure your workspace is clean, well-lit, and free of static electricity.
- **A soldering iron alone is insufficient for installation. A hot air rework station is required for proper removal and installation of the Type-C port.**
- If you are not confident in your ability to perform this repair, seek assistance from a qualified technician.

3. PRODUCT OVERVIEW

The Deal4GO Replacement USB-C Charging Port is a direct replacement for the original port found on the

Nintendo Switch (HAC-001). It is constructed from durable metal and features a Type-C connection type, identical to the factory-installed component.

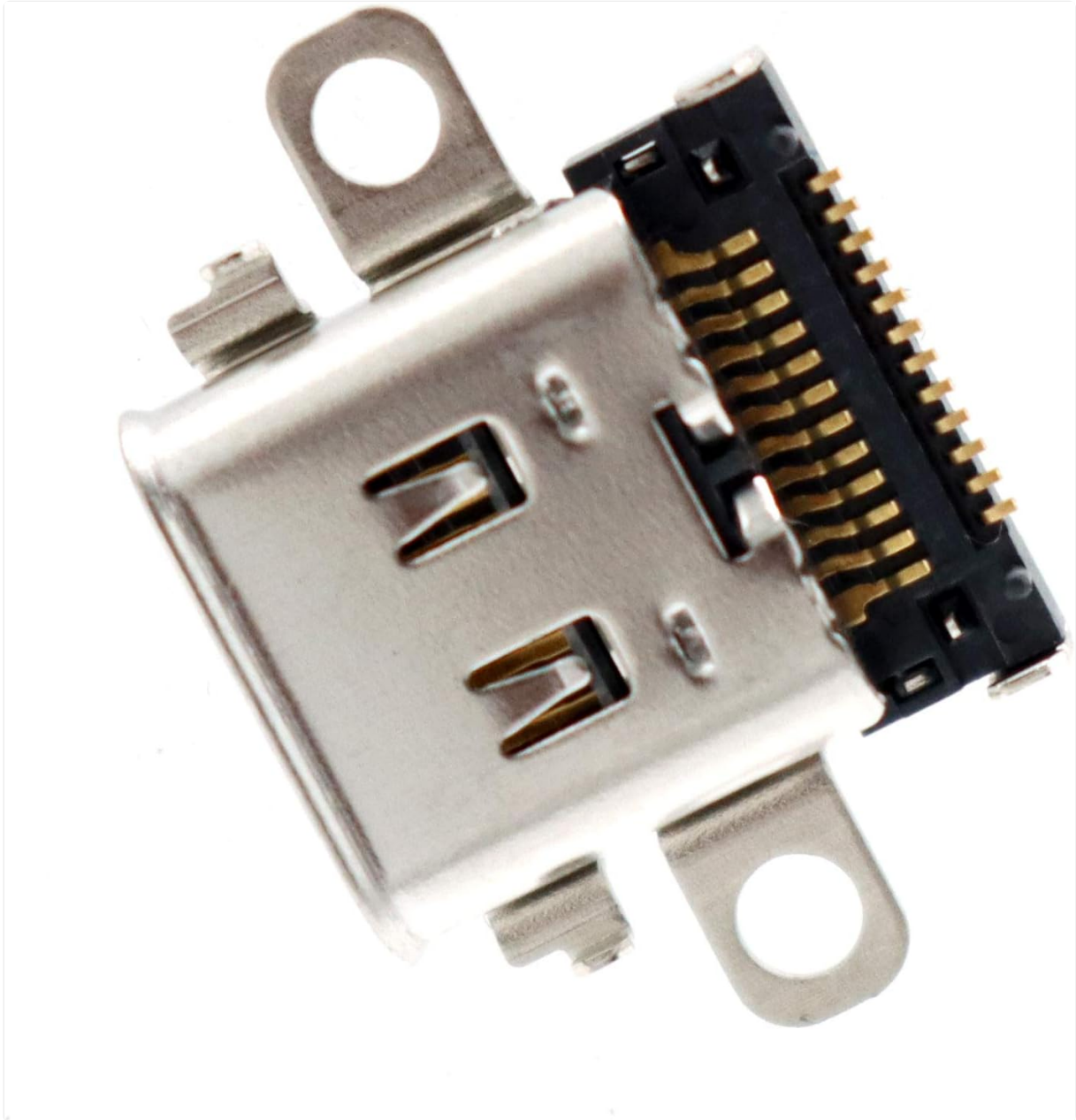


Image 3.1: Angled view of the Deal4GO Replacement USB-C Charging Port, showing its metal casing and internal pins.

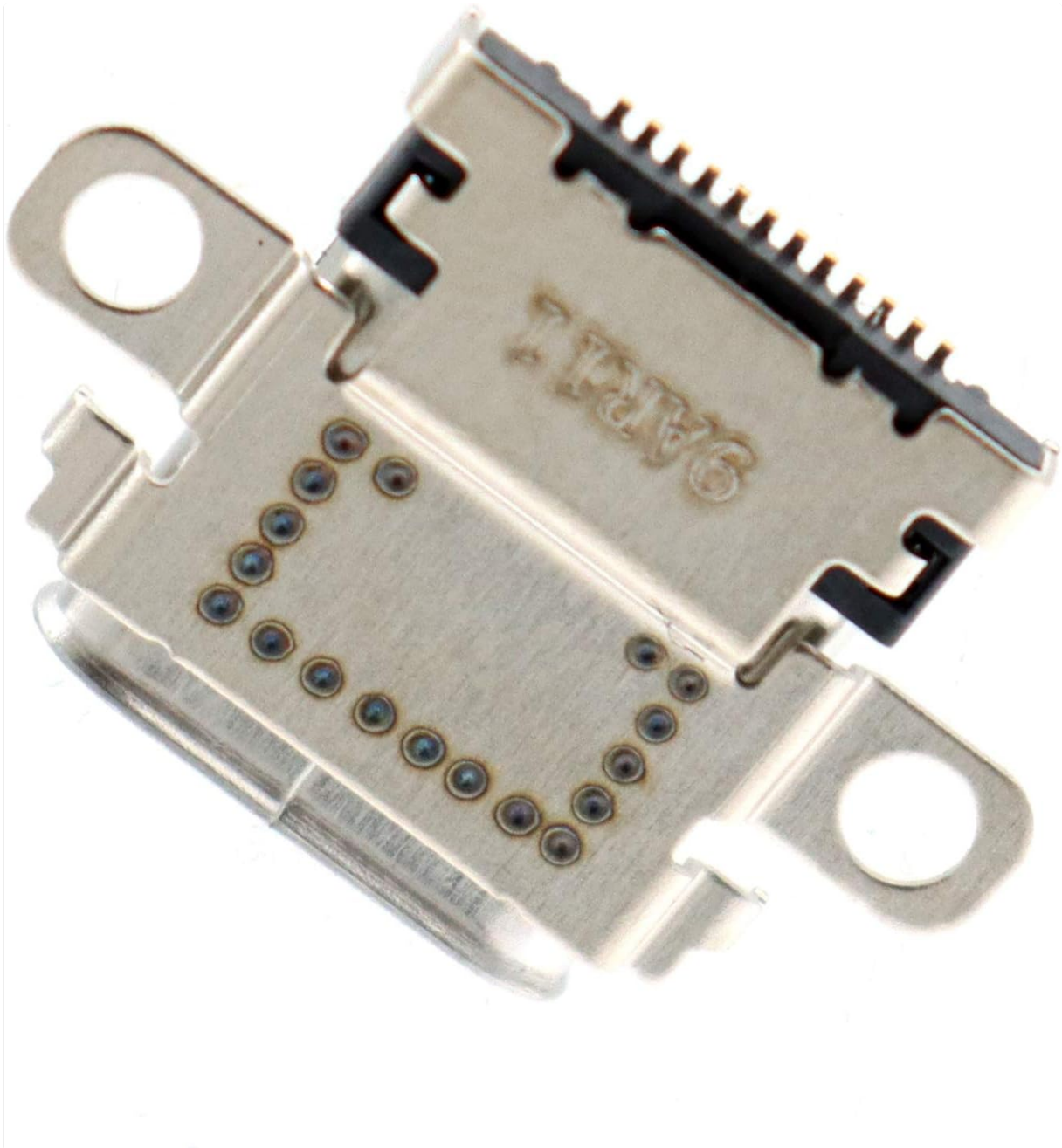


Image 3.2: Rear view of the replacement USB-C charging port, highlighting the solder pads for connection to the console's motherboard.

4. INSTALLATION GUIDE

This section outlines the general steps for replacing the USB-C charging port. Due to the complexity and precision required, it is highly recommended to consult professional repair guides and videos for a visual demonstration.

4.1. Required Tools (Not Included):

- Tri-wing screwdriver
- Phillips head screwdriver
- Plastic opening tools / Spudger
- Tweezers
- Hot air rework station
- Soldering iron (for pad preparation, if needed)
- Solder wick / Desoldering pump

- Flux
- New solder (lead-free recommended)
- Isopropyl alcohol (90% or higher)
- Anti-static mat and wrist strap

4.2. Step-by-Step Installation (Summary):

Note: This is a summary. Refer to detailed video guides for comprehensive visual instructions.

1. **Disassembly:** Carefully disassemble your Nintendo Switch console, following a reliable guide. This involves removing the back cover, battery, heat sink, and eventually the motherboard to access the USB-C port.
2. **Prepare the Area:** Once the motherboard is accessible, locate the damaged USB-C port. Apply high-quality flux around the pins and anchor points of the port.
3. **Remove Old Port:** Using a hot air rework station, apply heat evenly to the pins and anchor points of the old USB-C port. Once the solder melts, carefully lift the old port off the motherboard using tweezers. **Do not force it.**
4. **Clean Pads:** Clean the solder pads on the motherboard using solder wick and isopropyl alcohol to remove any old solder residue. Ensure the pads are clean and flat.
5. **Prepare New Port:** Apply a small amount of flux to the pins of the new Deal4GO USB-C charging port. It is recommended to pre-tin the pins, especially the inner rows, to facilitate easier soldering.
6. **Position New Port:** Carefully align the new USB-C port with the cleaned solder pads on the motherboard. Ensure it is perfectly seated.
7. **Solder New Port:** Using the hot air rework station, apply heat evenly to the pins and anchor points of the new port. The pre-tinned pins and flux will help the solder flow correctly. Ensure all pins make solid connections. Allow to cool naturally.
8. **Inspect Connections:** Visually inspect all solder joints under magnification to ensure there are no bridges or cold joints. Clean any excess flux with isopropyl alcohol.
9. **Reassembly:** Carefully reassemble the Nintendo Switch console in reverse order of disassembly.
10. **Test:** After reassembly, test the console's charging and docking functions.

For a visual guide, you may refer to external resources such as this YouTube video: [Nintendo Switch Type-C Port Replacement Guide](#). Please note that this link is provided for informational purposes and is not affiliated with Deal4GO.



Image 4.1: The replacement USB-C port positioned next to a Nintendo Switch console, illustrating its intended location.



Image 4.2: A close-up view of the USB-C port alongside the Nintendo Switch console, showing the precise fit.

5. OPERATION AFTER REPLACEMENT

Once the replacement USB-C port is successfully installed, your Nintendo Switch console should resume normal charging and docking functionality.

- **Charging:** Connect your official Nintendo Switch AC adapter or a compatible USB-C charger to the console. The console's battery indicator should show it is charging.
- **Docking:** Place the console into the Nintendo Switch dock. The console should display on the connected television, and the dock's indicator light should illuminate.
- **Data Transfer:** The port also supports data transfer, allowing for updates and communication with other USB-C devices if applicable.

6. MAINTENANCE

The USB-C port generally requires minimal maintenance. To ensure longevity:

- Avoid inserting foreign objects into the port.
- Use caution when connecting and disconnecting cables to prevent physical damage to the port.
- Keep the port free from dust and debris. A soft, dry brush or compressed air can be used for cleaning if necessary.

7. TROUBLESHOOTING

If you encounter issues after replacing the USB-C port, consider the following:

- **Console Not Charging:**

- Verify that the charger and cable are functional and correctly connected.
- Inspect the newly soldered port for any visible cold joints or solder bridges. Re-flow solder if necessary.
- Ensure the battery connector on the motherboard is securely seated.

- **Console Not Docking / No TV Output:**

- Confirm the HDMI cable and TV input are working correctly.
- Check the dock for power and proper connection to the TV.
- Re-inspect the USB-C port's solder connections, as specific pins are responsible for video output.

- **Loose Connection / Intermittent Charging:**

- This often indicates an incomplete solder connection, particularly on the inner rows of pins. Re-apply flux and re-heat with the hot air station to ensure proper solder flow.
- Ensure the port is firmly seated and its anchor points are securely soldered to the motherboard.

- **Physical Damage to Port:**

- If the port itself appears damaged after installation, it may need to be replaced again. Handle with care during installation.

8. SPECIFICATIONS

| | |
|---------------------------|--|
| Brand | Deal4GO |
| Model Number | Type-C-Port |
| Connection Type | USB Type-C |
| Material | Metal |
| Color | Silver |
| Compatible Devices | Nintendo Switch Console (Model: HAC-001) |
| Product Dimensions | 0.47 x 0.47 x 0.2 inches |
| Item Weight | 0.352 ounces |

9. WARRANTY AND SUPPORT

For information regarding product warranty or technical support, please refer to the purchase documentation or contact Deal4GO customer service directly through the platform where the product was acquired. Due to the nature of this component requiring specialized installation, warranty coverage may be subject to specific terms and conditions related to professional installation.

