

LoraTap B07PMJ6RM6

LoraTap Smart WiFi Bulb Socket E26 Instruction Manual

Model: B07PMJ6RM6

1. PRODUCT OVERVIEW

The LoraTap Smart WiFi Bulb Socket E26 transforms your standard light bulbs into smart, app-controlled devices. This adapter allows for voice control via Amazon Alexa and Google Home, remote control through the Smart Life app, and programmable timers and schedules. It is designed for use with E26 base LED, CFL, Fluorescent, and Corn bulbs, with a maximum power output of 30W.

2. SAFETY INFORMATION

- This device is designed for use with LED, CFL, Fluorescent, and Corn bulbs only.
- **Do not use with Incandescent, Halogen, or Tungsten bulbs.** Using incompatible bulb types may damage the smart socket.
- Ensure the total wattage of the connected bulb does not exceed 30W.
- For indoor use only.
- Always disconnect power before installation or removal.

The image below illustrates compatible and incompatible bulb types.

Lamp Compatibility Confirmation

Max. Power: 30W



LED Bulb Fluorescent Bulb CFL Bulb Corn Bulb

Work with LED bulbs, CFL bulbs, fluorescent bulbs, corn bulbs.



Dimmer Light Incandescent Tungsten Halogen Lamp

NOT work with dimmer lights , incandescent , tungsten or halogen lamps, otherwise it will damage the light socket.

Image: Lamp Compatibility Confirmation. This image shows green checkmarks for LED, Fluorescent, CFL, and Corn bulbs, indicating compatibility. Red crosses are shown over Dimmer Light, Incandescent, Tungsten, and Halogen lamps, indicating incompatibility. A note states: 'NOT work with dimmer lights, incandescent, tungsten or halogen lamps, otherwise it will damage the light socket.'

3. SPECIFICATIONS

Feature	Detail
Brand	LoraTap
Model	B07PMJ6RM6
Bulb Base	E26
Max Wattage	30 Watts
Light Type Compatibility	LED, CFL, Fluorescent, Corn Bulb
Control Method	App (Smart Life/Tuya), Voice (Alexa, Google Home)

Voltage	120 Volts (AC)
Wi-Fi Standard	2.4GHz Wi-Fi Network (5GHz not supported)
Material	Acrylonitrile Butadiene Styrene (ABS)
Product Dimensions	2.68"W x 2.83"H
Item Weight	6.4 ounces

The image below provides a visual representation of the product dimensions.

Dimension

Please measure the size of your light fixture and check if our light socket can fit into your light fixture before buying it.



Image: Product Dimensions. This diagram shows the dimensions of the E26 smart bulb socket, including its width (2.68 inches), total height (2.83 inches), and the added length to the light fixture (1.58 inches).

4. SETUP GUIDE

4.1 Pre-Installation Checks

- **Wi-Fi Network:** Ensure your Wi-Fi network is 2.4GHz. This device does not support 5GHz Wi-Fi or

consolidated 2.4GHz/5GHz dual-band networks where the bands cannot be separated.

- **Router Proximity:** The smart socket should be installed within 10 meters (approximately 30 feet) of your Wi-Fi router for optimal signal strength during pairing and operation.

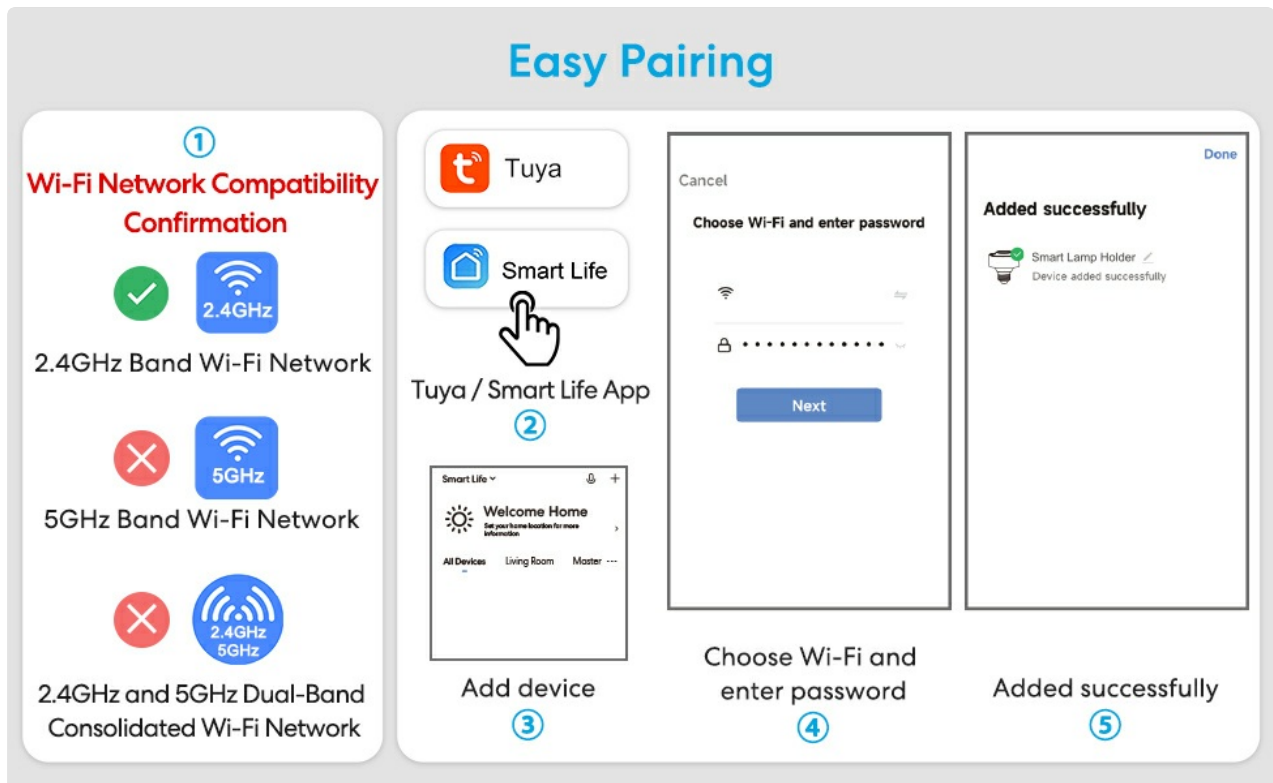


Image: Installation Distance. This image illustrates that the device should be within 10 meters of the Wi-Fi router for a good signal, showing a green happy face for <10m and a red sad face for >10m.

4.2 Installation Steps

1. **Power Off:** Ensure the power to the light fixture is turned off at the switch or circuit breaker.
2. **Screw In:** Screw the LoraTap Smart WiFi Bulb Socket into your existing E26 light fixture.
3. **Insert Bulb:** Screw a compatible LED, CFL, Fluorescent, or Corn bulb into the smart socket.
4. **Power On:** Restore power to the light fixture. The bulb should turn on.

Easy Installation



Image: Easy Installation. This image shows a person screwing a light bulb into the smart socket, and then the smart socket with bulb being installed into a lamp fixture.

4.3 App Pairing

1. **Download App:** Download the 'Smart Life' or 'Tuya' app from your smartphone's app store (available on iPhone App Store and Android App Store).
2. **Register/Login:** Open the app and register for a new account or log in if you already have one.
3. **Enter Pairing Mode:** Press and hold the button on the smart socket until the light indicator starts flashing rapidly. This indicates it is in pairing mode.
4. **Add Device:** In the Smart Life app, tap the '+' symbol in the top right corner to add a new device. Select 'Lighting' > 'Light Source (Wi-Fi)'.
5. **Confirm Flashing:** Confirm that the indicator light is flashing rapidly in the app.
6. **Connect to Wi-Fi:** Enter your 2.4GHz Wi-Fi network name and password. Ensure your phone is also connected to the 2.4GHz network during this step.
7. **Pairing:** The app will begin searching for and connecting to the device. Once connected, the device will be added successfully.
8. **Rename Device:** You can rename the device within the app (e.g., 'Kitchen Light') for easier control.



Image: Easy Pairing. This image shows a step-by-step guide for pairing the smart socket with the Smart Life/Tuya app, including Wi-Fi compatibility confirmation (2.4GHz only), adding the device, entering Wi-Fi credentials, and successful device addition.

5. OPERATING INSTRUCTIONS

5.1 App Control

Once paired, you can control your smart bulb socket from anywhere using the Smart Life app:

- **Turn On/Off:** Tap the switch icon in the app to turn the light on or off.
- **Real-Time Feedback:** The app provides real-time status of your light (on/off).
- **Group Control:** Group multiple smart sockets together to control them simultaneously.

APP Control

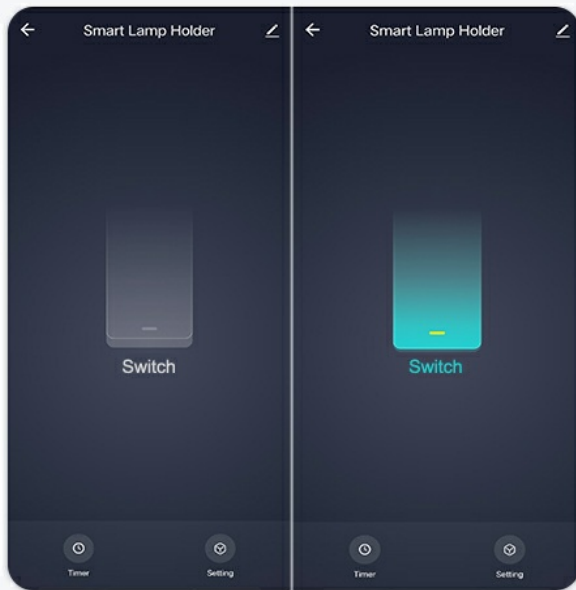
You can control your device anytime anywhere



Image: App Control. This image shows a person using a smartphone with the Smart Life app interface, demonstrating how to turn a smart lamp holder on or off remotely.

Real-Time Feedback

You can monitor the status of your light anywhere.



Three Relay Status

You can set the "Relay status" of your home smart device (ON, OFF or Keep as last status).

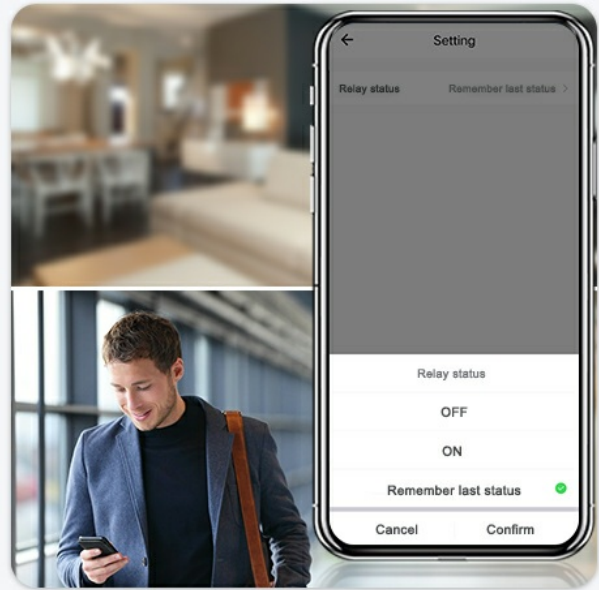


Image: Real-Time Feedback and Relay Status. This image displays the Smart Life app showing real-time on/off status of the light and options to set the relay status (ON, OFF, or Remember last status) after a power outage.

5.2 Voice Control

Integrate your smart socket with Amazon Alexa or Google Home for convenient voice commands:

- **Link Accounts:** In the Alexa or Google Home app, link your Smart Life account.
- **Discover Devices:** Ask Alexa or Google to discover new devices.
- **Voice Commands:** Use commands like "Alexa, turn on Kitchen Light" or "Hey Google, turn off Bedroom Lamp."

Voice Control



Image: Voice Control. This image shows a woman in a kitchen interacting with smart speakers (Google Home, Amazon Echo) to control a light, with a speech bubble indicating "Alexa, turn off kitchen light."

5.3 Timer and Schedule Functions

Automate your lighting with various timer and scheduling options:

- **Schedule:** Set specific times for the light to turn on or off daily or on selected days.
- **Countdown:** Set a countdown timer for the light to turn off after a specified duration.
- **Inching Timer:** Set the light to turn off automatically after a short, adjustable period (e.g., 30 minutes) once turned on.
- **Circulate Timer:** Create recurring on/off cycles for specific periods, useful for simulating occupancy.

Timer and schedule



Image: Timer and Schedule. This image displays the Smart Life app interface showing options to set daily schedules for turning lights on (e.g., 18:30) and off (e.g., 06:30).



Image: Inching Timer and Circulate Timer. This image shows the app interface for setting an Inching Timer (e.g., 30 minutes) and a Circulate Timer with specific on/off schedules for different days.

5.4 Device Sharing

Share control of your smart socket with family members:

- In the Smart Life app, navigate to the device settings.
- Select 'Share Device' and enter the accounts of family members you wish to grant access to.



Image: Device Sharing. This image illustrates how to share control of the smart device with multiple family members through the app.

6. MAINTENANCE

To ensure optimal performance and longevity of your LoraTap Smart WiFi Bulb Socket, follow these simple maintenance guidelines:

- **Cleaning:** Gently wipe the exterior of the smart socket with a dry, soft cloth. Do not use liquid cleaners or abrasive materials.
- **Connection Check:** Periodically ensure the smart socket is securely screwed into the light fixture and the bulb is firmly seated in the socket.
- **Firmware Updates:** Check the Smart Life app regularly for any available firmware updates for your device. Updates can improve performance and add new features.
- **Avoid Overloading:** Do not exceed the maximum wattage of 30W.

7. TROUBLESHOOTING

If you encounter issues with your LoraTap Smart WiFi Bulb Socket, refer to the following common solutions:

Problem	Possible Cause / Solution
---------	---------------------------

Device fails to connect to Wi-Fi or frequently disconnects.	<ul style="list-style-type: none"> ◦ Incorrect Wi-Fi Band: Ensure your router is broadcasting a 2.4GHz Wi-Fi signal and your phone is connected to it during setup. This device does not support 5GHz. ◦ Distance from Router: The device may be too far from the Wi-Fi router. Try moving the device closer to the router for initial setup, then relocate if the signal remains strong. ◦ Weak Wi-Fi Signal: Check your Wi-Fi signal strength in the installation area. Consider a Wi-Fi extender if necessary. ◦ Router Overload: Too many devices on your network can cause issues. Try disconnecting other devices temporarily. ◦ Router Settings: Some routers have advanced settings that might interfere. Consult your router's manual or ISP.
Light does not turn on after installation.	<ul style="list-style-type: none"> ◦ Power Supply: Ensure the light fixture has power and the wall switch is on. ◦ Bulb Compatibility: Verify that the bulb is a compatible type (LED, CFL, Fluorescent, Corn) and not an incandescent, halogen, or tungsten bulb. ◦ Bulb Seating: Ensure the bulb is screwed in firmly into the smart socket. ◦ Socket Seating: Ensure the smart socket is screwed in firmly into the light fixture.
Voice control (Alexa/Google Home) is not working.	<ul style="list-style-type: none"> ◦ Account Linking: Confirm that your Smart Life account is correctly linked to your Alexa or Google Home app. ◦ Device Discovery: Ask your voice assistant to 'discover devices' again. ◦ Device Name: Ensure the device name in the Smart Life app is simple and easily recognizable by the voice assistant. ◦ Internet Connection: Verify that both your smart socket and voice assistant device have a stable internet connection.
Smart socket stopped working after a few months.	<ul style="list-style-type: none"> ◦ Wi-Fi Connectivity: Re-check Wi-Fi connection as described above. Connectivity issues can sometimes appear over time. ◦ Power Cycle: Turn off the power to the light fixture for a few minutes, then turn it back on. ◦ Reset Device: If issues persist, consider resetting the device and re-pairing it with the app. Refer to the app for specific reset instructions.

8. WARRANTY AND SUPPORT

LoraTap products are designed for reliability and performance. For warranty information, technical support, or any questions regarding your Smart WiFi Bulb Socket, please visit the official LoraTap website or contact their customer service directly. You can often find support contact details within the Smart Life or Tuya app under the 'Me' or 'Profile' section, or by searching for 'LoraTap support' online.

