

## LoraTap B07PLQ25BT

# LoraTap Mini Smart WiFi Switch Instruction Manual

Model: B07PLQ25BT

## 1. INTRODUCTION

The LoraTap Mini Smart WiFi Switch is a compact wireless relay module designed to add smart control capabilities to your existing electrical appliances. It allows for remote control via a smartphone app, voice control through popular smart assistants like Amazon Alexa and Google Home, and programmable scheduling functions. This device is ideal for converting traditional lights, fans, and other appliances into smart devices without requiring a central hub.

### Key Features:

- **App Control:** Remotely control devices from anywhere using the Smart Life app.
- **Voice Control:** Compatible with Amazon Alexa and Google Home for hands-free operation.
- **Scheduling:** Set timers, countdowns, and create custom schedules for automated operation.
- **Group Control:** Manage multiple smart relays simultaneously.
- **Compact Design:** Small size for easy integration into existing electrical setups.

## 2. PACKAGE CONTENTS

Upon opening the package, verify that all components are present:

- LoraTap Mini Smart WiFi Switch
- English User Guide
- Screwdriver
- Mounting Screws
- Double-sided Adhesive Tape



Apply to **Alexa**, **Google Home** and **IFTTT**



Voice - control



Image: Contents of the LoraTap Mini Smart WiFi Switch package, including the switch module, user guide, screwdriver, screws, and adhesive tape.

### 3. SPECIFICATIONS

Parameter	Value
Input Voltage	100-250VAC, 50/60Hz
Output Voltage	100-250VAC, 50/60Hz
Maximum Load	10A / 1100W
Connectivity	Wi-Fi 2.4GHz (IEEE 802.11 b/g/n)
Dimensions	1.89 x 1.65 x 0.9 inches (47 x 42 x 23 mm)

Material	ABS Flame Retardant Material
Operating Temperature	-10°C to 40°C (14°F to 104°F)



Image: Detailed view of the LoraTap Mini Smart WiFi Switch, showing its compact size and printed specifications.

Your browser does not support the video tag.

Video: Demonstrates the LoraTap Wi-Fi Relay Switch, highlighting its compact size, flame-retardant material, and ease of installation.

## 4. SETUP AND INSTALLATION

**Important Safety Information:** Before beginning installation, ensure the power supply to the circuit is turned off at the circuit breaker. Installation should only be performed by a qualified electrician or a person with sufficient knowledge of electrical wiring.

## 4.1 Wiring Diagram

The LoraTap Mini Smart WiFi Switch requires a Live (L) and Neutral (N) input, and provides a switched Live (L) and Neutral (N) output for the load (e.g., lamp). Ensure correct wiring as per the diagram below.

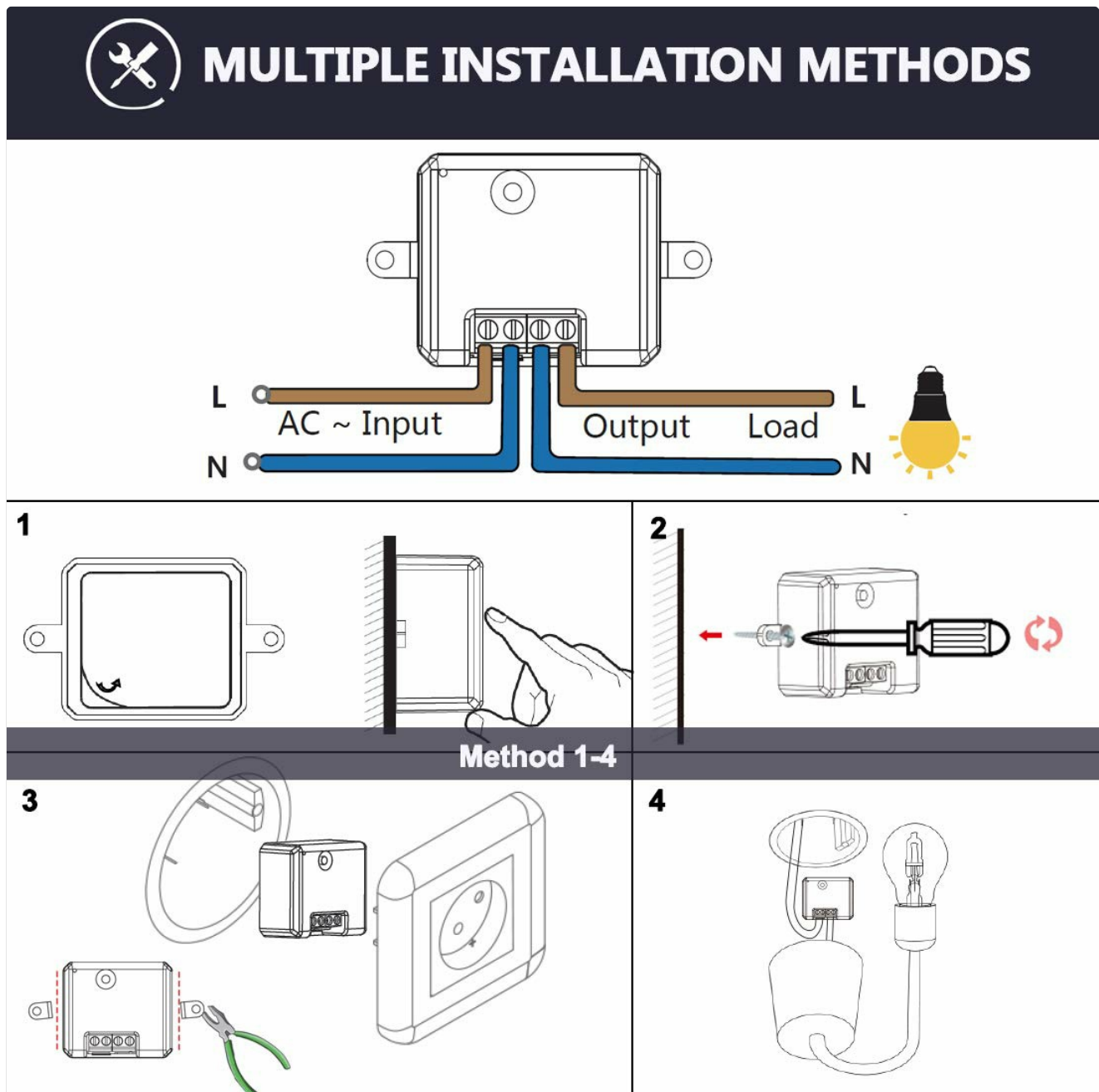


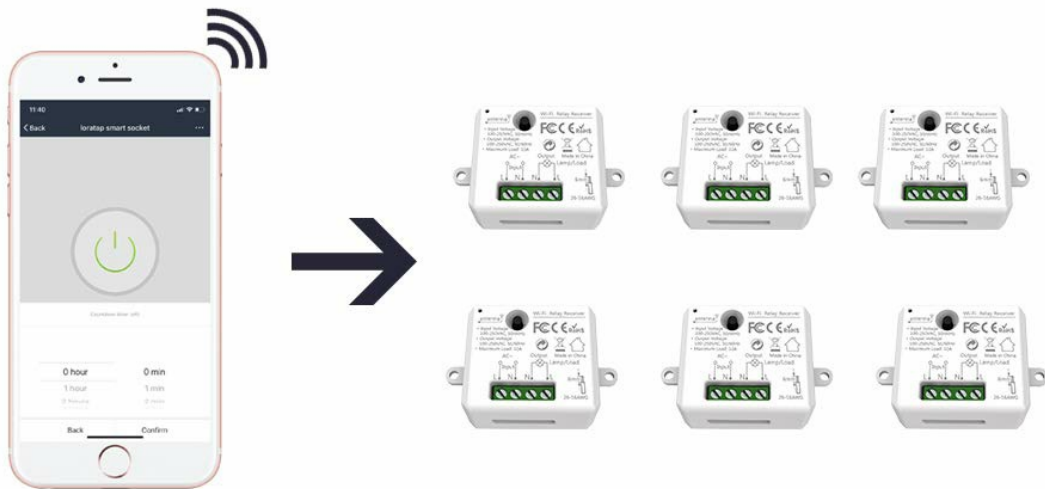
Image: Step-by-step wiring instructions for connecting the LoraTap Mini Smart WiFi Switch to an AC input and a lamp/load.

## 4.2 Physical Installation

- 1. Power Off:** Turn off the main power supply to the circuit at your home's circuit breaker.
- 2. Connect Wires:** Connect the Live (L) and Neutral (N) input wires to the corresponding terminals on the switch. Connect the Live (L) and Neutral (N) output wires from the switch to your appliance (e.g., light fixture). Refer to the wiring diagram for precise connections.
- 3. Secure Device:** The compact design allows for installation inside a junction box, behind a wall switch, or within a light fixture canopy. Use the provided screws or double-sided adhesive tape to secure the switch in place.
- 4. Restore Power:** Once all connections are secure and the switch is safely housed, restore power at the circuit breaker.

# SUPPORT DIVERSIFIED CONTROL

1 smartphone can control multiple switches



Multiple smartphones can control 1 switch

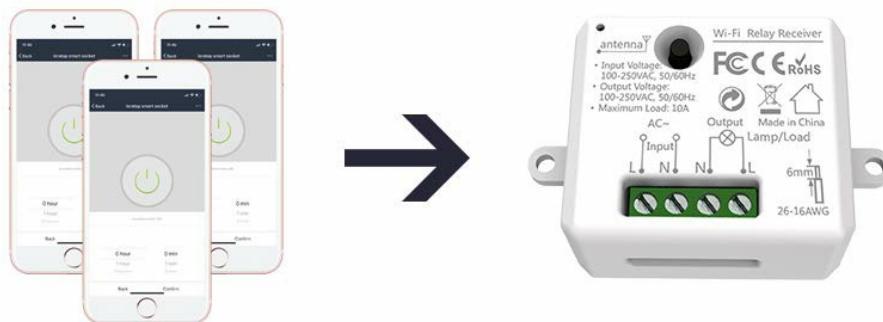


Image: Various installation scenarios for the LoraTap Mini Smart WiFi Switch, demonstrating its versatility for embedded use.

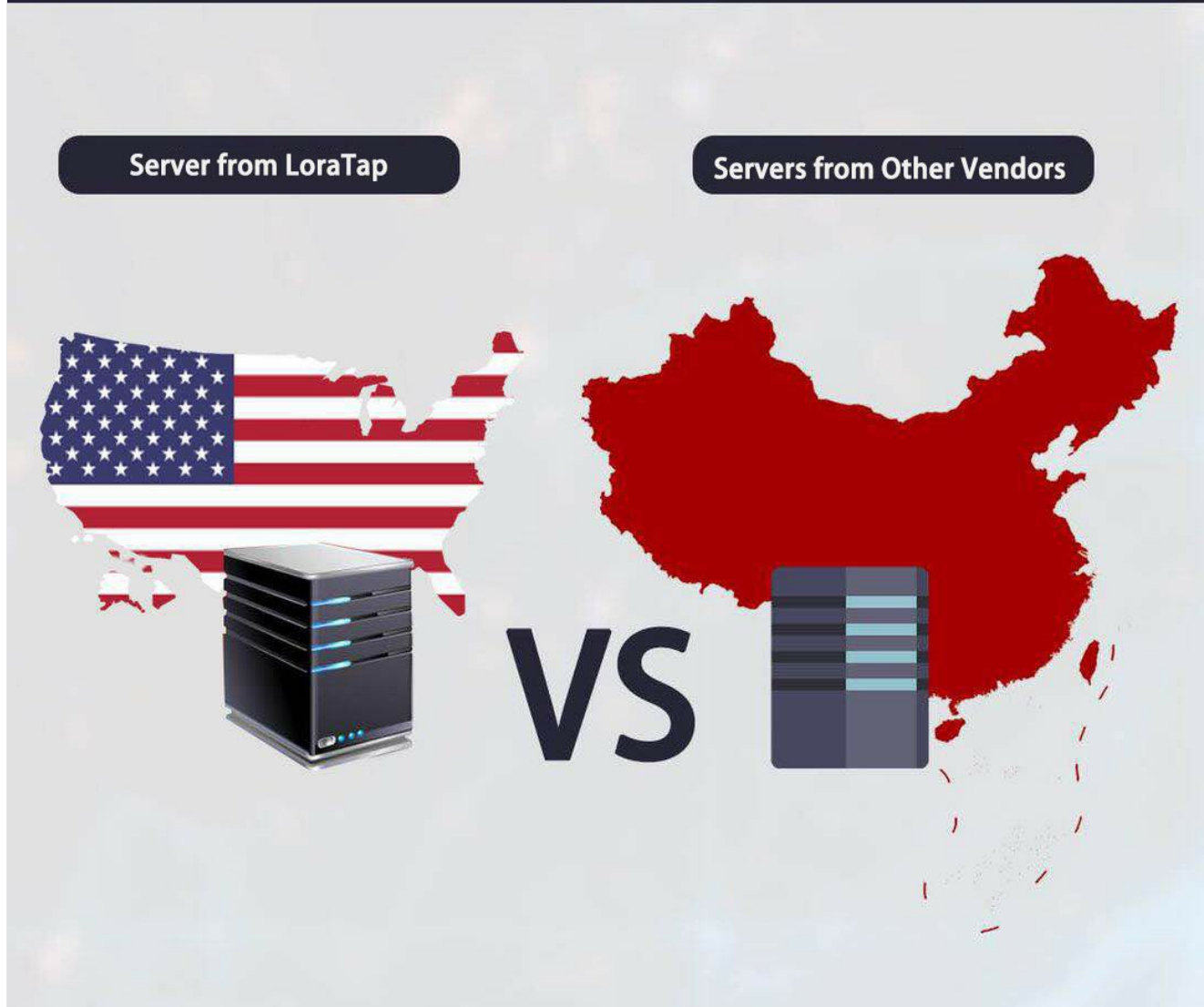
## 4.3 App Pairing (Smart Life App)

The LoraTap Mini Smart WiFi Switch uses the Smart Life app for control and configuration. Ensure your Wi-Fi network is 2.4GHz.

1. **Download App:** Download the "Smart Life" app from the App Store (iOS) or Google Play Store (Android).
2. **Register/Login:** Open the app and register a new account or log in with an existing one.
3. **Add Device:** Tap the "+" icon in the top right corner of the app to add a new device.
4. **Select Device Type:** Choose "Electrical" or "Switch (Wi-Fi)" from the device list.
5. **Enter Wi-Fi Details:** Follow the on-screen prompts to connect the switch to your 2.4GHz Wi-Fi network. You may need to put the switch into pairing mode (usually by pressing the reset button for 5 seconds until the indicator light blinks rapidly).
6. **Confirm Connection:** Once successfully paired, the device will appear in your Smart Life app. You can rename it for easier identification (e.g., "Living Room Light").



# SMART LIFE APP, STABLE SERVER IN THE USA



*Image: Screenshot of the Smart Life app interface, demonstrating how to turn the smart switch on or off.*

## 5. OPERATING THE SMART SWITCH

### 5.1 App Control

After successful pairing, you can control your connected appliance directly from the Smart Life app:

- Open the Smart Life app.
- Select the LoraTap switch from your device list.
- Tap the power icon to toggle the appliance On/Off.
- Access additional features like scheduling and countdown timers within the device's control interface.



Image: The Smart Life app displaying options for setting timers and countdowns for the smart switch.

## 5.2 Voice Control (Alexa/Google Home)

To enable voice control, link your Smart Life account to Amazon Alexa or Google Home:

1. **Open Smart Assistant App:** Open the Amazon Alexa app or Google Home app.
2. **Enable Skill/Action:**
  - For Alexa: Go to "Skills & Games" and search for "Smart Life". Enable the skill and link your Smart Life account.
  - For Google Home: Go to "Works with Google" and search for "Smart Life". Link your Smart Life account.
3. **Discover Devices:** Once linked, ask your smart assistant to "Discover devices" or manually discover them in the app.
4. **Voice Commands:** You can now use voice commands to control your switch. Examples:
  - "Alexa, turn on Living Room Light."
  - "Hey Google, turn off Bedroom Fan."





Apply to **Alexa**, **Google Home** and **IFTTT**



**Voice - control**



*Image: A user interacting with Alexa to control a smart device, highlighting the voice control feature.*

### 5.3 Scheduling and Automation

The Smart Life app allows for advanced scheduling and automation:

- **Timers:** Set a countdown timer for the device to turn On/Off after a specified duration.
- **Schedules:** Create daily or weekly schedules for automatic On/Off times.
- **Scenes:** Group multiple devices and control them with a single tap or voice command.
- **Automation:** Set up conditions (e.g., weather, sunrise/sunset, device status) to trigger actions.





Image: The Smart Life app interface demonstrating the creation of schedules and automation rules for smart devices.

## 6. MAINTENANCE

The LoraTap Mini Smart WiFi Switch requires minimal maintenance. Follow these guidelines to ensure optimal performance and longevity:

- **Cleaning:** If necessary, gently wipe the exterior of the switch with a dry, soft cloth. Do not use harsh chemicals, abrasive cleaners, or allow water to enter the device.
- **Firmware Updates:** Periodically check the Smart Life app for available firmware updates for your device. Updates can improve performance, add new features, or address security vulnerabilities.
- **Network Stability:** Ensure your Wi-Fi network is stable and within range of the switch for consistent connectivity.
- **Avoid Overload:** Do not connect appliances that exceed the maximum load capacity (10A/1100W) of the switch to prevent damage.

## 7. TROUBLESHOOTING

If you encounter issues with your LoraTap Mini Smart WiFi Switch, refer to the following common problems and solutions:

Problem	Possible Cause	Solution
Device cannot be paired with the app.	Incorrect Wi-Fi band (not 2.4GHz), weak Wi-Fi signal, incorrect pairing mode.	Ensure your router is broadcasting a 2.4GHz signal. Move the switch closer to the router. Reset the switch and try pairing again (refer to app instructions for specific pairing mode).
Device is offline in the app.	Loss of Wi-Fi connection, power outage, router issues.	Check your Wi-Fi router and internet connection. Power cycle the switch (turn off and on the circuit breaker). Re-pair the device if necessary.
Voice control not working.	Smart Life account not linked to Alexa/Google Home, incorrect device name, internet connectivity issues.	Verify that your Smart Life account is correctly linked in the Alexa/Google Home app. Ensure the device name is simple and easily recognizable by voice commands. Check internet connection.
Appliance does not turn on/off.	Incorrect wiring, overloaded circuit, faulty appliance.	Double-check all wiring connections as per the diagram. Ensure the appliance's power consumption does not exceed 10A/1100W. Test the appliance directly without the smart switch.

## 8. WARRANTY AND SUPPORT

LoraTap products are designed for reliability and performance. For specific warranty details, please refer to the warranty card included in your product packaging or visit the official LoraTap website.

If you require technical assistance or have questions not covered in this manual, please contact LoraTap Customer Support:

- **Website:** [www.loratap.com](http://www.loratap.com)
- **Email:** Refer to the user guide for specific support email.

Please have your product model (B07PLQ25BT) and purchase information ready when contacting support.