



[Manuals.plus](#) /

› [Uniden](#) /

› Uniden R7 EXTREME LONG RANGE Laser/Radar Detector User Manual

Uniden R7

Uniden R7 EXTREME LONG RANGE Laser/Radar Detector

USER MANUAL

Introduction

The Uniden R7 is an advanced laser and radar detector designed to provide comprehensive protection and real-time alerts for drivers. Featuring dual antennas for 360-degree detection, built-in GPS for intelligent false alert filtering, and a vibrant OLED display with directional arrows, the R7 offers industry-leading performance and situational awareness. This manual provides essential information for setting up, operating, maintaining, and troubleshooting your Uniden R7 detector.

Setup

Proper installation ensures optimal performance of your Uniden R7. Choose a mounting location that provides a clear view of the road ahead and behind, typically high on the windshield near the rearview mirror.



Figure 1: Uniden R7 with single suction cup mount. Ensure a clear line of sight for optimal detection.



Extreme Long Range Radar/Laser Detector

The all-new R7 is part of the industry's most talked about line of radar detectors.

Its dual antenna allows the R7 to detect threats from all 4 directions, with voice alerts for the direction of threat.

It even shows the direction, band, and signal strength for each. Perfect just got better.



50%
Faster Processor



Radar Arrow Alert Using Dual Antenna



Voice Alerts Including Direction of Threats



360° Laser Detection



Large Ultra Bright OLED Display



Digital Signal Processor



GPS for Red Light Camera



Advanced K/KA Filter



Mute Memory



Spectre Elite Undetectable

Figure 2: Uniden R7 with dual suction cup mount. This mount provides enhanced stability.

Package Contents:

- Uniden R7 Radar Detector
- Cigarette Adapter with Mute Key and USB Jack
- Single Suction Cup Bracket
- Dual Suction Cup Bracket
- Neoprene Carrying Case

- USB Cable

R7 Radar Detector



- Extreme Long Range Radar Detection
- 50% Faster Processor
- Dual Antenna Detects Direction of Threat
- Arrow Voice Alerts with Direction of Threat
- Red Light Camera Alert
- GPS Built-In with Free Updates to GPS Database
- Large Ultra-Bright Color OLED Display
- Spectre Elite Undetectable
- Quiet Ride
- Max Speed Warning Alert
- Voice Alert
- Cigarette Adapter with Mute Key and USB Jack
- Single and Double Suction Cup Brackets Included



With the Uniden R7, you'll know when there trouble ahead, or behind, or even over there.

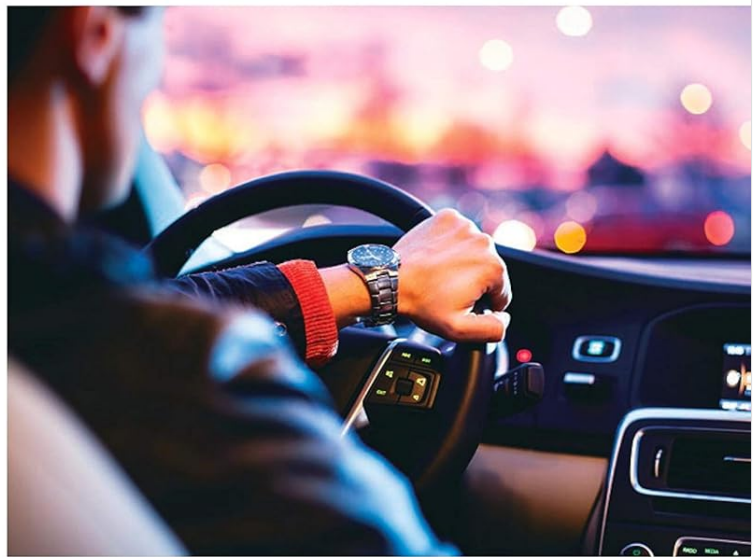


Figure 3: Included accessories with the Uniden R7. Ensure all components are present before installation.

Installation Steps:

1. Clean the windshield area where the detector will be mounted to ensure proper adhesion of the suction cups.
2. Attach the desired suction cup bracket (single or dual) to the Uniden R7 unit.
3. Press the suction cups firmly against the windshield to secure the detector.
4. Connect the cigarette adapter to the R7's power input and plug the other end into your vehicle's 12V power outlet.
5. Position the detector to be level and have an unobstructed view.

Operating Instructions

The Uniden R7 is designed for intuitive operation, providing clear alerts and customizable settings to enhance your driving experience.



Figure 4: The R7's multi-color OLED display provides real-time information including speed, detected band, frequency, and signal strength.

Powering On/Off:

- The unit powers on automatically when connected to a powered 12V outlet.
- To manually power off, press and hold the power button (usually located on the top of the unit).

Display and Alerts:

- **Multi-Color OLED Display:** Shows current speed, detected radar/laser band (X, K, Ka, Laser), frequency, and signal strength.
- **Directional Arrows:** Indicate the direction of the threat (front, rear, side). This feature is crucial for understanding the source of an alert.



Figure 5: Directional arrows on the R7 display, providing visual cues for threat location.

Key Features:

- **Xtreme Range:** Provides early warning for radar and laser threats.
- **GPS Technology:** Allows for marking specific locations to mute common false alerts (e.g., automatic doors) and provides red light and speed camera alerts.
- **Voice Alerts:** Provides clear voice announcements for detected threats and settings changes.
- **Advanced K/KA Band Filter:** Helps reduce false alerts from vehicle blind spot monitoring systems and other radar sources.
- **Quiet Ride (Speed-based Auto Mute):** Automatically mutes alerts below a user-defined speed, useful in urban areas or traffic.

Menu Navigation:

Use the 'MENU' button to access settings. The '+' and '-' buttons navigate through options, and the 'PWR' button (or a dedicated 'SEL' button if present) confirms selections. Refer to the on-screen prompts for detailed menu options.

Maintenance

Regular maintenance ensures the longevity and optimal performance of your Uniden R7.

Cleaning:

- Wipe the exterior of the unit with a soft, damp cloth.
- Do not use abrasive cleaners or solvents, as they may damage the display or casing.
- Ensure the lens area is clean for accurate laser detection.

Firmware Updates:

Uniden periodically releases firmware updates to improve performance, add features, and update the red light/speed camera database. It is recommended to keep your device's firmware up to date.

- Visit the official Uniden website for the latest firmware and update instructions.
- Typically, updates require connecting the R7 to a computer via the provided USB cable.

Troubleshooting

If you encounter issues with your Uniden R7, refer to the following common problems and solutions:

Problem	Possible Cause	Solution
No Power	Loose power connection, faulty 12V outlet, damaged power cable.	Check power cable connection. Test 12V outlet with another device. Try a different power cable if available.
Frequent False Alerts	Automatic door sensors, vehicle blind spot monitors, strong signal interference.	Utilize the GPS Lockout feature for common false alert locations. Enable K/KA band filtering. Adjust sensitivity settings (e.g., City mode).
No Radar/Laser Detection	Unit not powered on, obstructed view, incorrect band settings.	Ensure unit is powered. Verify clear line of sight. Check menu settings to ensure desired bands are enabled.
GPS Not Functioning	Poor satellite signal, unit indoors.	Ensure unit has a clear view of the sky. Move to an open area. Allow time for GPS acquisition.

Specifications

Detailed technical specifications for the Uniden R7 Laser/Radar Detector.

Feature	Detail
Product Dimensions	4.81 x 1.38 x 3.88 inches (4.81"L x 1.38"W x 3.88"H)
Item Weight	6.7 ounces

Feature	Detail
Model Number	R7
Display Type	OLED (Multi-Color)
Power Source	DC (12 Volts)
Frequency Bands Supported	K, Ka, Laser
GPS Built-in	Yes (for Red Light/Speed Camera Alerts, GPS Lockouts)
Directional Arrows	Yes
Manufacturer	Uniden
Country of Origin	Korea, Republic of

Warranty Information

Uniden products are manufactured to high quality standards. For specific warranty terms and conditions, please refer to the warranty card included with your product or visit the official Uniden website. Keep your purchase receipt as proof of purchase for any warranty claims.

Support

For further assistance, technical support, or to download the latest user manual PDF, please visit the official Uniden support website:

www.uniden.com/support

You can also find the official User Manual PDF [here](#).