

[Manuals.plus](#) /

> [KETOTEK](#) /

> KETOTEK KT-D138 DC 6.5-100V 100A Digital Voltmeter Ammeter Power Energy Meter User Manual

KETOTEK KT-D138

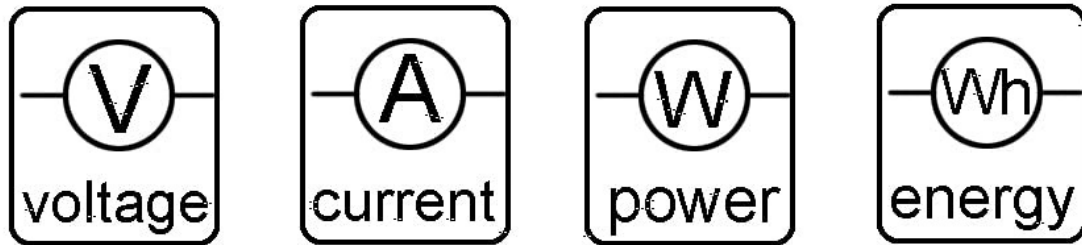
KETOTEK KT-D138 DC 6.5-100V 100A Digital Voltmeter Ammeter Power Energy Meter

User Manual

PRODUCT OVERVIEW

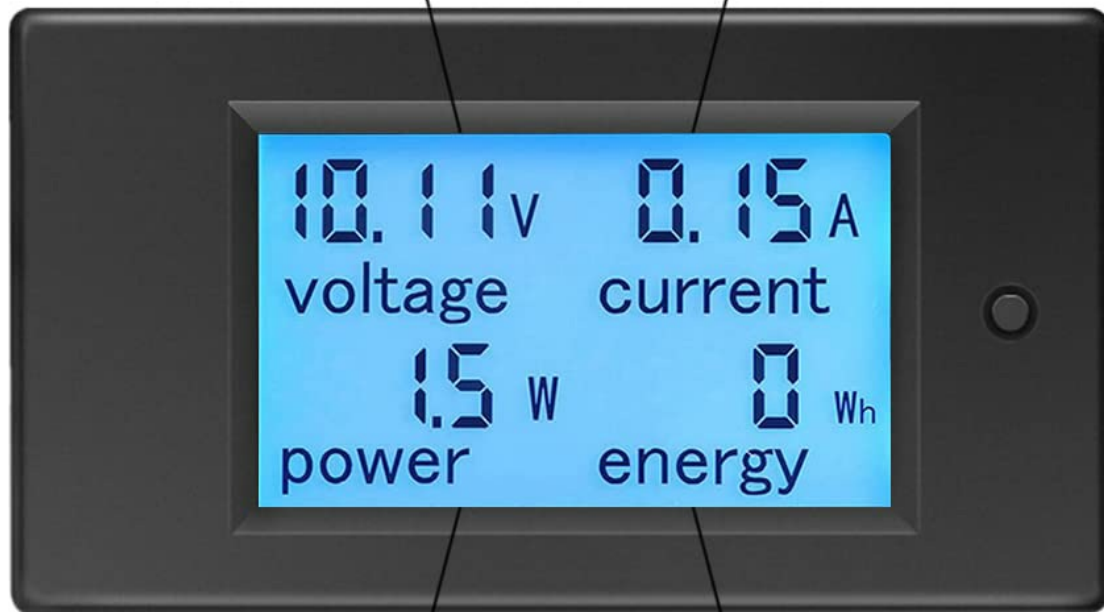
The KETOTEK KT-D138 is a versatile 4-in-1 DC digital multimeter designed to accurately measure voltage, current, active power, and energy consumption. This device is suitable for monitoring electrical parameters in various DC applications, including battery systems, solar power setups, and electric bicycle generators. It features a large LCD display with backlight for clear readability, a voltage alarm function, energy reset capability, and data storage upon power-off.

Note: This device requires an external shunt for current measurement, which is not included with the multimeter.



range: 6.5~100V

range: 0~100A



range: 0~10kW

range: 0~9999kWh

Image: The KETOTEK KT-D138 digital multimeter displaying its four measurement parameters: voltage, current, power, and energy, along with their respective measurement ranges.

KEY FEATURES

- **4-in-1 Measurement:** Measures DC voltage, current, active power, and energy.
- **Wide Measurement Range:**
 - Voltage: DC 6.5V to 100V
 - Current: 0A to 100A (requires external shunt)
 - Active Power: 0W to 10kW
 - Energy: 0kWh to 9999kWh
- **LCD Display:** Large, clear LCD with blue backlight for easy reading in various lighting conditions.
- **Voltage Alarm Function:** User-configurable voltage alarm threshold.
- **Energy Reset Function:** Allows resetting accumulated energy data.
- **Data Storage:** Automatically saves measurement data when power is off.

- **Compact Design:** Dimensions of 8.96 x 4.46 x 2.44 cm.

SETUP AND WIRING

Proper wiring is crucial for the correct operation and safety of the device. Please follow the wiring diagram carefully. This meter requires an external shunt for current measurement, which must be purchased separately.

Wiring Diagram

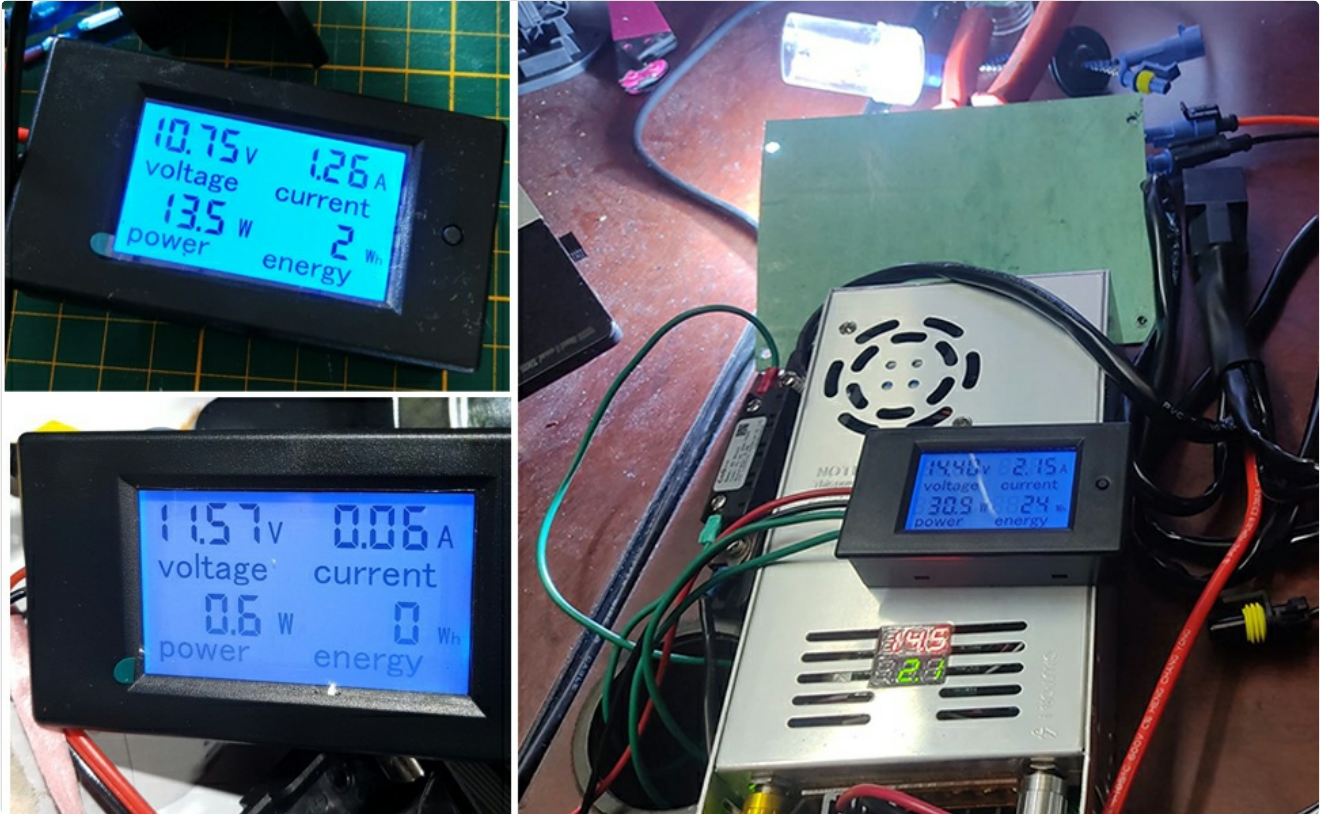


Image: A detailed wiring diagram illustrating how to connect the KETOTEK KT-D138 digital multimeter with an external shunt for accurate voltage and current measurements in a DC circuit.

1. Connect the positive terminal of the DC power supply to the **red thin wire** of the meter.
2. Connect the negative terminal of the DC power supply to the **black thin wire** of the meter.
3. Connect the positive terminal of the load to the **red thick wire** of the meter.
4. Connect the negative terminal of the load to one end of the external shunt.
5. Connect the other end of the external shunt to the **black thick wire** of the meter.
6. Ensure all connections are secure and correct before applying power. Incorrect wiring can damage the product.

Important: The load cannot exceed the rated voltage and current of the meter (DC 6.5-100V, 100A). This device is designed for indoor use only.

OPERATING INSTRUCTIONS

Once properly wired and powered on, the meter will display voltage, current, power, and energy readings on its LCD screen. The device has a single button for various functions.

Energy Reset

Backlight ON/OFF

Set Voltage Alarm Threshold



Image: The KETOTEK KT-D138 digital multimeter showing the location of its single control button, used for energy reset, backlight control, and setting the voltage alarm threshold.

Button Functions:

- **Short Press:** Toggles the backlight ON/OFF.
- **Long Press (3 seconds):** Resets the energy (kWh) accumulation. The energy value will flash, then release the button. Press again to confirm reset, or long press again to cancel.
- **Setting Voltage Alarm Threshold:**
 - a. Press and hold the button for 6 seconds until the voltage value flashes.
 - b. Short press to adjust the alarm voltage value. The value will increase by 0.5V with each press.
 - c. Long press for 3 seconds to save the setting and exit.

The meter will automatically store data when power is removed, ensuring that accumulated energy readings are not lost.

MAINTENANCE

The KETOTEK KT-D138 is designed for reliable operation with minimal maintenance. Follow these guidelines to ensure its longevity:

- **Cleaning:** Use a soft, dry cloth to clean the display and casing. Do not use abrasive cleaners or solvents.
- **Environment:** Operate the device in a dry, indoor environment. Avoid exposure to moisture, extreme temperatures, and direct sunlight.
- **Connections:** Periodically check all wiring connections to ensure they remain secure. Loose connections can lead to inaccurate readings or device malfunction.
- **Storage:** When not in use for extended periods, store the meter in a cool, dry place.

TROUBLESHOOTING

Problem	Possible Cause	Solution
No display or incorrect readings.	<ul style="list-style-type: none">◦ Incorrect wiring.◦ Power supply outside the operating range (DC 6.5-100V).◦ Damaged device.	<ul style="list-style-type: none">◦ Verify all wiring connections against the diagram in the "Setup and Wiring" section.◦ Ensure the input voltage is within the specified range.◦ If wiring is correct and voltage is within range, the device may be faulty. Contact support.
Current or Power readings are zero/incorrect.	<ul style="list-style-type: none">◦ Shunt not connected or incorrectly wired.◦ Load not drawing current.	<ul style="list-style-type: none">◦ Ensure the external shunt is correctly installed and wired according to the diagram.◦ Verify that the load is functioning and drawing current.
Energy (kWh) value does not reset.	Incorrect button operation.	Refer to the "Operating Instructions" for the correct long-press sequence to reset energy.
Backlight not working.	Backlight turned off or device malfunction.	Short press the button to toggle the backlight. If it still doesn't work, the device may be faulty.

If you encounter issues not listed here or if the suggested solutions do not resolve the problem, please contact KETOTEK customer support.

TECHNICAL SPECIFICATIONS

Model Number	KT-D138
Operating Voltage Range	DC 6.5V - 100V
Current Measurement Range	0A - 100A (requires external shunt)
Active Power Measurement Range	0W - 10kW
Energy Measurement Range	0kWh - 9999kWh
Display Type	LCD with Blue Backlight
Dimensions (L x W x H)	8.96 x 4.46 x 2.44 cm (approximately 9 x 4.5 x 2.4 cm)

Weight	70 grams
Certifications	CE, 3C, FCC
Operating Environment	Indoor use only

WARRANTY INFORMATION

KETOTEK products are manufactured to high-quality standards. For specific warranty details, please refer to the warranty card included with your purchase or contact KETOTEK customer support. The warranty typically covers defects in materials and workmanship under normal use.

CUSTOMER SUPPORT

If you have any questions, require technical assistance, or need to report an issue with your KETOTEK KT-D138 multimeter, please contact our customer support team. You can typically find contact information on the product packaging, the official KETOTEK website, or through your purchase platform.

When contacting support, please provide your product model number (KT-D138) and a detailed description of the issue.