

[Manuals.plus](#) /

› [Anker](#) /

› Anker 320 Car Charger (24W II) User Manual

Anker A2727

Anker 320 Car Charger (24W II) User Manual

Model: A2727 | Brand: Anker

1. INTRODUCTION AND OVERVIEW

The Anker 320 Car Charger (24W II) is a compact and durable dual USB-A car charger designed to provide efficient power to your mobile devices while on the go. Featuring a scratch-resistant aluminum alloy exterior and gold-plated circuitry, this charger ensures reliable performance and a sleek aesthetic. It delivers a combined 24W output, allowing for simultaneous charging of two devices.



Image: The Anker 320 Car Charger (24W II) showcasing its dual USB-A ports and compact design.

2. PACKAGE CONTENTS

- Anker 320 Car Charger (24W II)
- Welcome Guide

3. SETUP AND INSTALLATION

1. **Locate Your Vehicle's 12V Socket:** Identify the 12V accessory power outlet (often referred to as a cigarette lighter socket) in your car.
2. **Insert the Car Charger:** Firmly insert the Anker 320 Car Charger into the 12V socket. The charger's ultra-compact design ensures a flush fit, minimizing obstruction. A subtle blue LED indicator will illuminate when the charger is properly connected and receiving power.
3. **Connect Your Devices:** Plug your USB-A charging cables into the available ports on the Anker 320 Car Charger.

Hassle-Free Installation

The ridged end makes plugging and unplugging quick and effortless.



Image: A hand demonstrating the easy, hassle-free installation of the Anker 320 Car Charger into a vehicle's power socket.

Designed to Fit Anywhere

No wider than a quarter, this charger powers two devices while taking up minimal space.

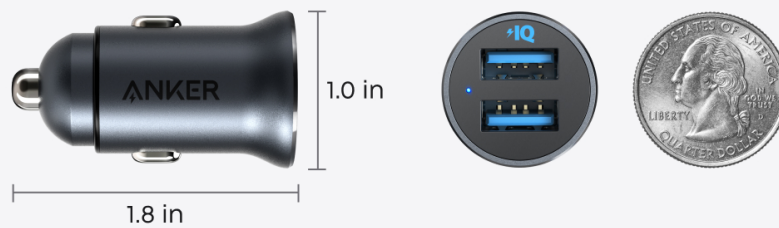


Image: The ultra-compact dimensions of the Anker 320 Car Charger, shown next to a US quarter for scale, highlighting its minimal footprint.

4. OPERATING INSTRUCTIONS

Once installed, the Anker 320 Car Charger is ready for use. Simply connect your devices using appropriate USB-A cables. The charger's dual ports allow for simultaneous charging of two devices, providing a combined output of 24W. The intelligent PowerIQ technology ensures optimal charging speed for your connected devices.

Note: This charger is not compatible with Qualcomm Quick Charge technology.

Save Up to 1 Hour


iPhone XS Max

 2h 6 mins
Anker

 3h 23 mins
Stock Chargers

iPhone XR

 2h 2 mins
Anker

 3h 7 mins
Stock Chargers



Data based on internal lab testing.
Results may vary under different conditions.

Image: A graphic illustrating the faster charging times achieved with the Anker 320 Car Charger compared to standard stock chargers for various iPhone models.

Your browser does not support the video tag.

Video: An official Anker video demonstrating the features and compact design of the Anker 24W 4.8A Metal Dual Car Charger.

5. COMPATIBILITY

The Anker 320 Car Charger is broadly compatible with a wide range of USB-A powered devices, including but not limited to:

- **iPhone Series:** iPhone 16, 15, 14, 14 Pro, 14 Pro Max, 13, 13 mini, 13 Pro, 13 Pro Max, 12, 12 mini, 12 Pro, 12 Pro Max, iPhone SE (2nd generation), 11, 11 Pro, 11 Pro Max, XS, XS Max, XR, X, 8 Plus,

8, 7, 7 Plus, 6

- **Samsung Galaxy:** S22, S21, S10, S10e, S10+, S9, S9+, S8, S8+, Note 20, 10, 9, 8
- **iPad:** iPad Pro, iPad Air 2, iPad Mini
- **Other Devices:** Huawei P10, Mate 9, Mate 20X, Mate 20 Pro; LG G7, V30+; Google Pixel, Pixel 3XL; Sony XZ2 Premium, Sony XZ3; Cameras, Headphones, Speakers, Tablets.

Universal Compatibility



Do not support Quick Charge 3.0.

Image: A visual representation of the Anker 320 Car Charger's broad compatibility with a range of smartphones, tablets, and other portable electronic devices.

6. SPECIFICATIONS

Feature	Detail
---------	--------

Feature	Detail
Model Number	A2727
Input Voltage	12 Volts
Total USB Ports	2 (USB-A)
Total Wattage Output	24 Watts
Output Current	2.5 Amps (per port, 4.8A total)
Output Voltage	5 Volts
Enclosure Material	Aluminum Alloy
Special Feature	Blue LED Indicator, Gold-Plated Circuitry
Weight	0.04 Pounds

Premium Gold-Plated Coils



Highly Efficient



Low Resistance



Less Heat

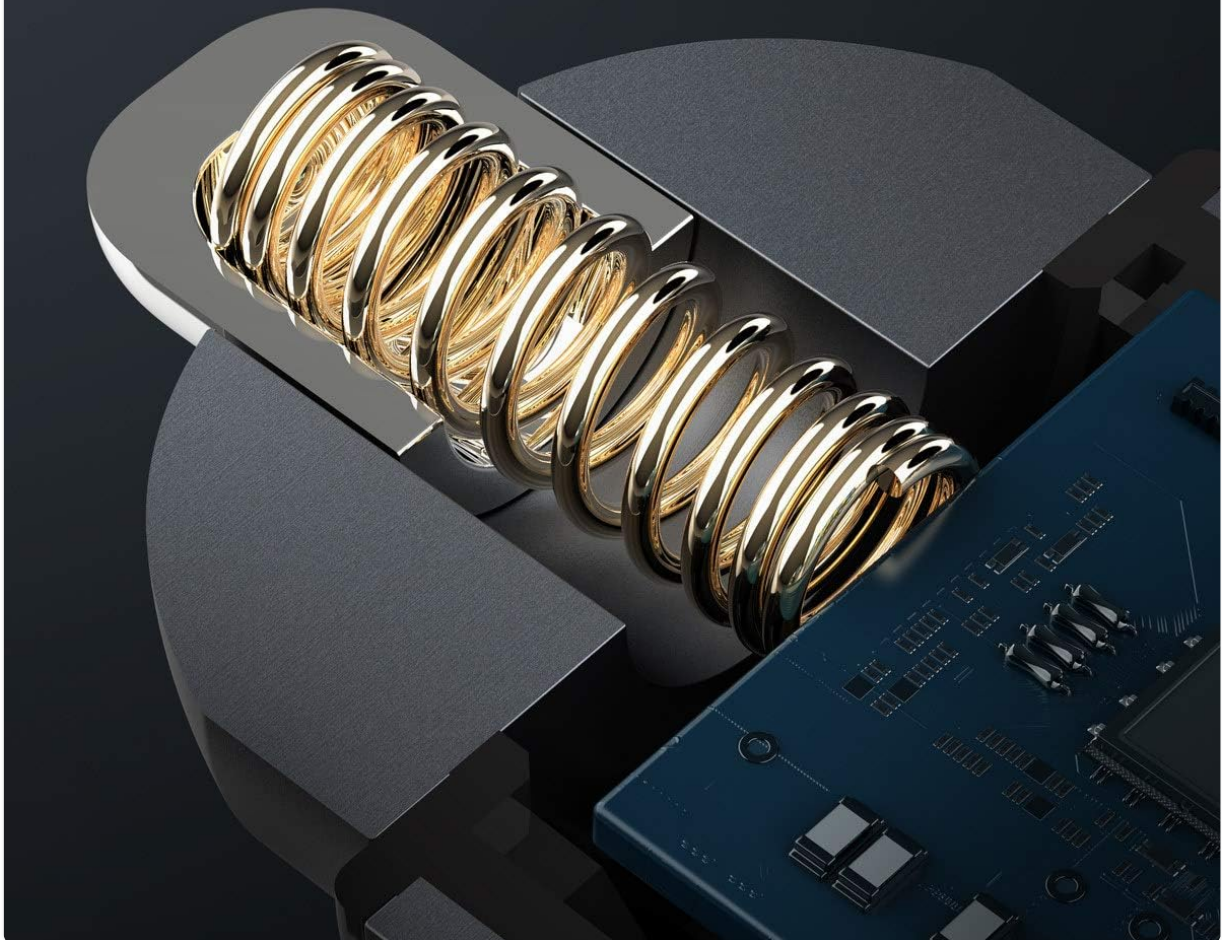


Image: An illustration highlighting the premium gold-plated coils within the Anker 320 Car Charger, designed for high efficiency, low resistance, and improved heat dissipation.

7. TROUBLESHOOTING

• **Charger Not Working:**

- Ensure the car charger is fully inserted into the 12V socket.
- Check if the vehicle's 12V socket is receiving power (some vehicles require the ignition to be on).
- Try connecting a different device or using a different USB-A cable to rule out device or cable issues.

• **Slow Charging:**

- Verify that your device and cable are capable of handling the charger's output.
 - Remember that this charger provides a maximum of 24W total output and is not compatible with Qualcomm Quick Charge. Charging speed may vary depending on the device's battery level and power requirements.
 - Ensure both ports are not simultaneously charging high-power devices, as the 24W output is shared.
- **Blue LED Not Illuminating:**
 - This indicates the charger is not receiving power. Re-insert the charger firmly or check the vehicle's power supply to the 12V socket.

8. MAINTENANCE

- **Cleaning:** Wipe the charger with a soft, dry cloth. Avoid using liquid cleaners or abrasive materials.
- **Storage:** Store the charger in a cool, dry place when not in use.
- **Handling:** Avoid dropping the charger or subjecting it to strong impacts, as this may damage the internal components or the aluminum casing.

Scratch-Resistant Aluminum Alloy Exterior



Image: A detailed view of the Anker 320 Car Charger's scratch-resistant aluminum alloy exterior, emphasizing its durable construction.

9. WARRANTY AND SUPPORT

The Anker 320 Car Charger (24W II) comes with an 18-month warranty, ensuring peace of mind regarding its quality and performance. For any product-related inquiries, technical support, or warranty claims, please refer to the contact information provided in your Welcome Guide or visit the official Anker support website.

