

## TMEZON MZ-HD1004M-K4-01-B

# TMEZON 4-Channel HD-TVI DVR Security System User Manual

Model: MZ-HD1004M-K4-01-B

## 1. INTRODUCTION

This manual provides comprehensive instructions for the installation, operation, and maintenance of your TMEZON 4-Channel HD-TVI DVR Security System. This system includes a 4-channel 1080N Digital Video Recorder (DVR) and four 720P weatherproof cameras, designed for reliable surveillance in various environments. Please read this manual thoroughly before setup and retain it for future reference.

## 2. PACKAGE CONTENTS

Verify that all items listed below are included in your package. If any items are missing or damaged, please contact customer support.

- 1 x 4-Channel HD-TVI DVR (with 1TB HDD pre-installed)
- 4 x 720P Weatherproof CCTV Cameras
- 4 x 60ft BNC Cables
- 1 x Power Supply for DVR
- 1 x 1-to-4 Power Splitter Cable for Cameras
- 1 x USB Mouse
- Mounting Screws and Plugs



Image: Overview of the TMEZON security system package contents, including the DVR, four cameras, cables, power supplies, and accessories.

### 3. PRODUCT OVERVIEW

#### 3.1 DVR Features

- 4-Channel 1080N HD-TVI Recording
- Pre-installed 1TB Hard Disk Drive (HDD) for continuous recording
- Multiple recording modes: continuous, scheduled, motion-triggered
- Video output: HDMI, VGA
- USB ports for mouse and backup
- Network interface for remote access

#### 3.2 Camera Features

- 720P HD Resolution (1280TVL)
- Weatherproof design for indoor and outdoor use
- Automatic IR-Cut filter for clear day and night vision
- 3.6mm fixed lens

- 3-axis mounting bracket for flexible positioning



Image: Illustrates the camera's flexible 3-axis mounting bracket, allowing for wall or ceiling installation and angle adjustment.



Image: Shows the physical dimensions of the camera, approximately 13 cm in length and 5.5 cm in height, with a 3.6mm lens.

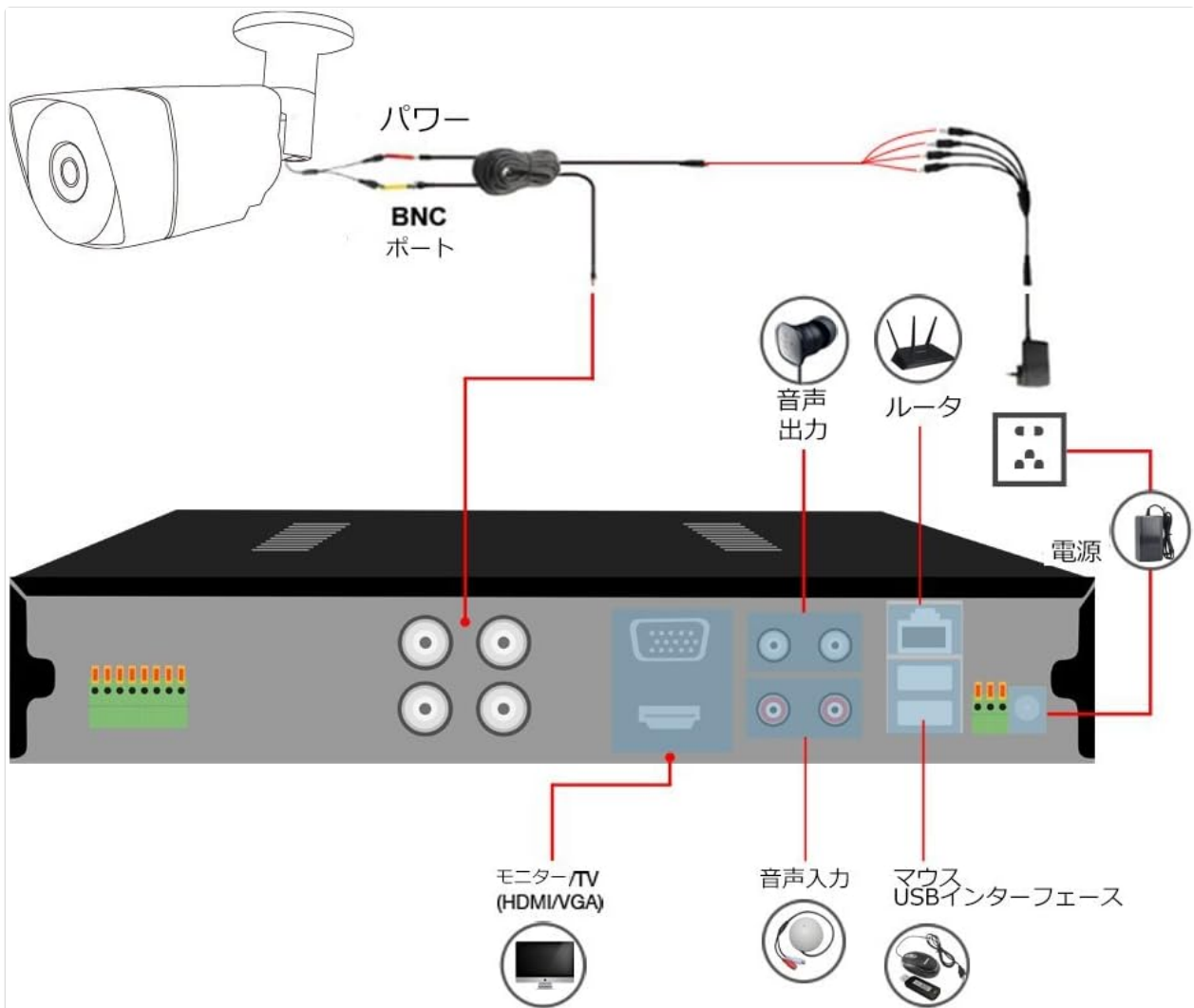


Image: Depicts the camera's night vision capabilities and its weatherproof design, suitable for outdoor installation even in adverse weather conditions.

## 4. SETUP GUIDE

Follow these steps to set up your TMEZON security system:

1. **Connect Cameras to DVR:** Connect each camera to a BNC input port on the DVR using the provided BNC cables.
2. **Power Cameras:** Connect the 1-to-4 power splitter cable to the camera power adapter. Then, connect each camera to the splitter cable. Plug the camera power adapter into an electrical outlet.
3. **Connect DVR to Monitor:** Connect the DVR to a monitor or TV using an HDMI or VGA cable.
4. **Connect USB Mouse:** Plug the USB mouse into one of the DVR's USB ports.
5. **Connect DVR to Network (Optional):** For remote viewing, connect the DVR's LAN port to your router using an Ethernet cable.
6. **Power DVR:** Connect the DVR power adapter to the DVR and then to an electrical outlet. The system will power on.





Image: A detailed diagram illustrating the connection points for the DVR, including camera inputs, power, monitor outputs (HDMI/VGA), audio input/output, USB ports for mouse, and network connection to a router.

## 5. OPERATING INSTRUCTIONS

### 5.1 Initial Setup and Configuration

Upon first power-on, the DVR will guide you through an initial setup wizard. This typically includes setting the date/time, creating a password, and configuring network settings if connected to a router.

### 5.2 Remote Viewing

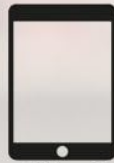
To access your security system remotely via smartphone or PC:

1. Ensure the DVR is connected to your network.
2. Download the free "XMEYE" application from your smartphone's app store (iOS/Android).
3. Register an account and add your DVR device using its unique ID (usually found on the DVR or in the system information menu).
4. You can now view live feeds and playback recordings from anywhere with an internet connection (WiFi,

# クイック遠隔監視



スマホ



タブレット



PC



Image: Illustrates the capability for quick remote monitoring using various devices such as smartphones, tablets, and personal computers.

## 5.3 Motion Detection and Alerts

The system supports customizable motion detection areas and alerts:

- Access the DVR's menu to configure motion detection settings for each camera.
- Define specific areas within the camera's view where motion should trigger an alert. This helps minimize false alarms.
- Set up email alerts or push notifications to your smartphone when motion is detected. These notifications can include images of the event.



# 動き検出



Image: Demonstrates the motion detection feature, showing a grid overlay for custom detection areas, event recording, email alerts, and mobile notifications.

## 6. MAINTENANCE

Regular maintenance ensures optimal performance and longevity of your security system:

- **Clean Cameras:** Periodically clean camera lenses with a soft, damp cloth to remove dust and dirt that may obscure the view.
- **Check Cables:** Inspect all cables for wear, damage, or loose connections. Secure any loose connections.
- **Firmware Updates:** Check the manufacturer's website for any available firmware updates for your DVR to ensure you have the latest features and security patches.
- **Backup Recordings:** Regularly back up important recordings from the DVR to an external USB drive.
- **DVR Placement:** Ensure the DVR is in a well-ventilated area to prevent overheating, especially during warmer months.



## 7. TROUBLESHOOTING

If you encounter issues with your TMEZON security system, refer to the following common problems and solutions:

- **No Video Display:**
  - Check all power connections to the DVR and cameras.
  - Verify that the monitor is correctly connected to the DVR via HDMI or VGA and is set to the correct input source.
  - Ensure BNC cables are securely connected to both cameras and DVR.
  - Test cameras individually if possible to isolate a faulty camera or cable.
- **Remote Viewing Not Working:**
  - Confirm the DVR is connected to your router with an Ethernet cable and has a valid IP address.
  - Check your router's internet connection.
  - Ensure the "XMEYE" app is correctly configured with your DVR's device ID and your smartphone has internet access.
  - Verify that no firewall settings on your router are blocking the DVR's access.
- **Poor Image Quality:**
  - Clean camera lenses.
  - Ensure cameras are within their effective range for night vision.
  - Check cable integrity; damaged cables can degrade signal quality.
- **Motion Detection Not Triggering:**
  - Review motion detection settings in the DVR menu. Adjust sensitivity and detection areas.
  - Ensure recording schedules are correctly set.

## 8. SPECIFICATIONS

Feature	Description
Brand	TMEZON
Model Number	MZ-HD1004M-K4-01-B
Product Dimensions	30 x 30 x 30 cm
Item Weight	4.63 Kilograms
DVR Channels	4-Channel
Video Capture Resolution	720p (Cameras), 1080N (DVR Recording)
Connectivity Technology	Wired (BNC for cameras), USB (Mouse), Ethernet (Network)
Included Components	DVR, 4 Cameras, BNC Cables, Power Supplies, USB Mouse, Mounting Hardware


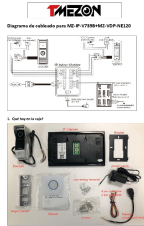


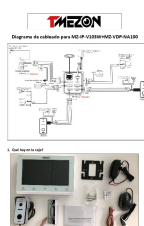
## 9. WARRANTY AND SUPPORT

TMEZON offers a **2-year warranty** and a **30-day money-back guarantee** for this product. If you encounter any issues or have questions regarding your security system, please do not hesitate to contact our customer support team.

**Customer Support Email:** [tmezoncctvsystem@yahoo.com](mailto:tmezoncctvsystem@yahoo.com)

For purchases of two or more sets, please contact us for potential special discounts.

### Related Documents - MZ-HD1004M-K4-01-B

	<p><a href="#">Tmezon 4-Wire IP Video Door Phone 10" Touch Screen Series Quick Guide</a></p> <p>This document provides a quick guide for the Tmezon 4-Wire IP Video Door Phone, 10" Touch Screen Series. It covers installation, wiring, specifications, and app connection for indoor monitors and outdoor doorbells.</p>
	<p><a href="#">TMEZON MZ-IP-V739B+MZ-VDP-NE120 Video Intercom System: Wiring and Installation Guide</a></p> <p>Comprehensive guide for installing and wiring the TMEZON MZ-IP-V739B+MZ-VDP-NE120 video intercom system. Includes detailed wiring diagrams, troubleshooting tips, and instructions for using extension cables and connecting multiple monitors.</p>
	<p><a href="#">Tmezon 4-Wire Digital-Analog Hybrid System Installation and Operation Guide</a></p> <p>Comprehensive guide for the Tmezon 4-wire digital-analog hybrid system, covering installation, wiring diagrams, specifications, and app integration for models like MZ-IP-V1026TW and MZ-IP-V726TW. Learn about AHD/TVI/CVI 2MP resolution and Tuya Smart APP features.</p>
	<p><a href="#">TMEZON 4-Wire IP Video Door Phone 10" Touch Screen Series Operation Manual</a></p> <p>Comprehensive operation manual for TMEZON's 4-Wire IP Video Door Phone 10" Touch Screen Series, covering installation, wiring, specifications, and app connectivity for models like MZ-IP-V103W and MZ-IP-V142B.</p>
	<p><a href="#">TMEZON Video Intercom System Installation Guide and Wiring Diagram</a></p> <p>Comprehensive guide for installing and wiring TMEZON video intercom systems, including models MZ-IP-V103W, MZ-VDP-NA100, MZ-IP-V739, and MZ-VDP-738EM. Covers setup, troubleshooting, extension cable usage, and multi-monitor configuration.</p>



[TMEZON 4-Wire Digital-Analog Hybrid Video Intercom System Manual](#)

Comprehensive guide for the TMEZON 4-wire digital-analog hybrid video intercom system, detailing installation, operation, specifications, and network setup with Tuya Smart APP compatibility.