

LoraTap AK3-AT1-GL-M-X

LoraTap Wi-Fi Relay Receiver Instruction Manual

MODEL: AK3-AT1-GL-M-X

Introduction

The LoraTap Wi-Fi Relay Receiver is a smart control module designed to integrate traditional switches and electrical appliances into your Wi-Fi smart home system. This device allows for remote control, scheduling, and voice control of connected lights, pumps, and other electrical loads, enhancing convenience and energy efficiency. It is compatible with popular smart home platforms like Google Home and operates via the Smart Life App.

Safety Information

- Always disconnect power at the circuit breaker before installation, maintenance, or removal of the device.
- Installation should be performed by a qualified electrician or in accordance with local electrical codes.
- Ensure the device's specifications (voltage, current, load) are compatible with your electrical system.
- Do not expose the device to moisture or extreme temperatures.
- Keep out of reach of children.

Specifications

Feature	Detail
Input Voltage	100-250VAC, 50/60Hz
Output Voltage	100-250VAC, 50/60Hz
Maximum Load	10A (2300 Watts)
Model Number	AK3-AT1-GL-M-X
Dimensions	8.1 x 7.3 x 3.4 cm; 100 grams (Package)

Feature	Detail
Connector Type	Quick Connect
Contact Material	Copper or Silver
Contact Type	Normally Open
Mounting Type	Surface or Flush Mount
Operating Mode	Automatic

Setup and Installation

Before beginning installation, ensure the main power supply is turned off at the circuit breaker to prevent electrical shock.

1. Physical Installation and Wiring



Image Description: This image displays the LoraTap Wi-Fi Relay Receiver module. It shows the 'Input' terminals (L for Live, N for Neutral) and 'Output' terminals (N for Neutral, L for Live/Load) clearly labeled. An antenna is visible on top, and regulatory marks (FCC, CE, RoHS) are printed on the device. The module is compact, designed for integration into

existing electrical setups.

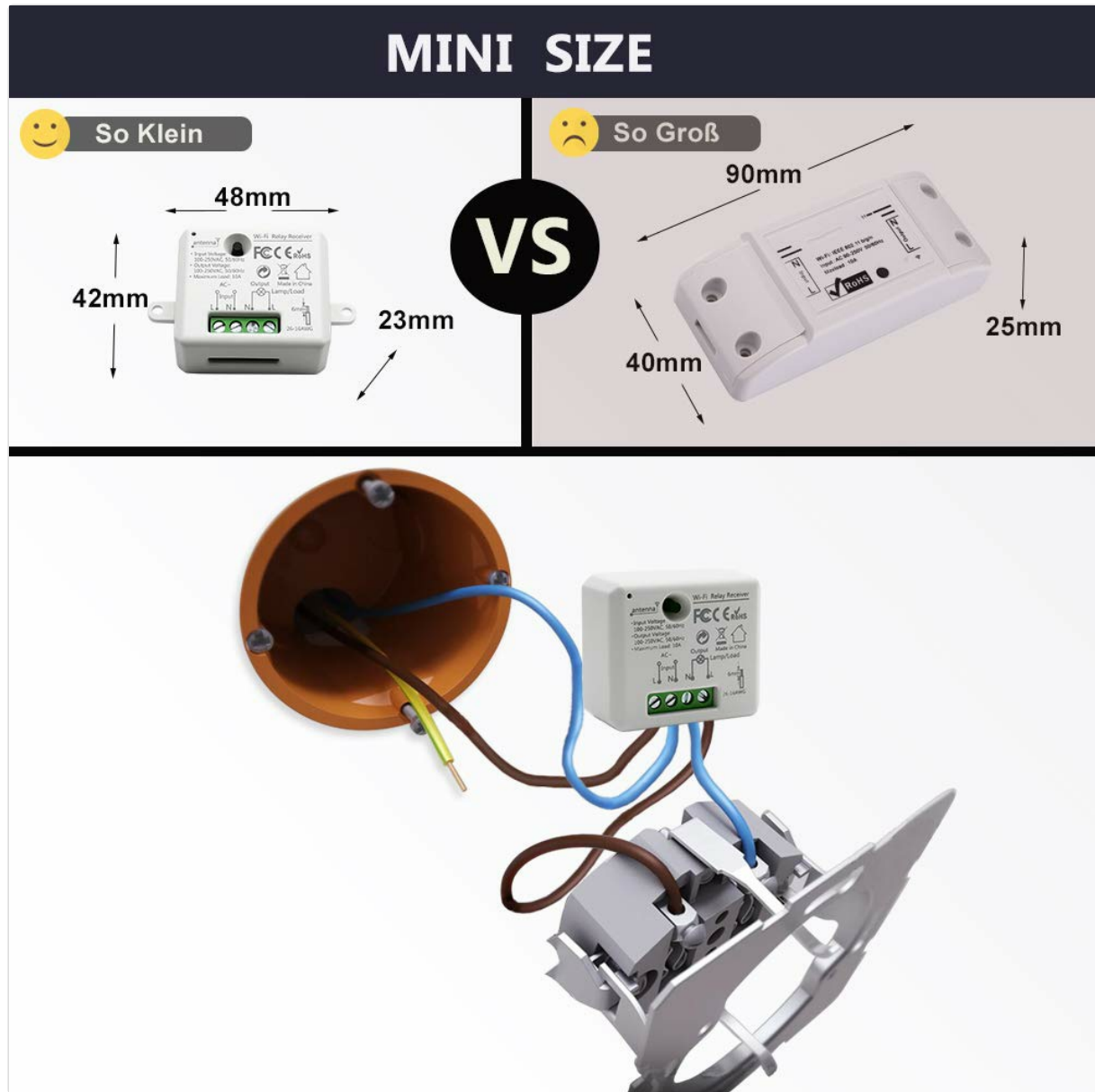
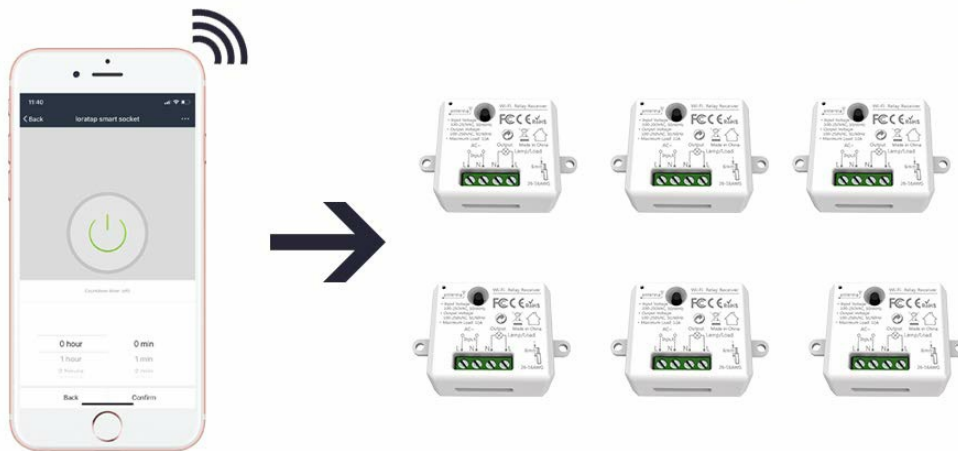


Image Description: This image illustrates the compact size of the LoraTap Wi-Fi Relay Receiver (48mm x 42mm x 23mm) compared to a larger, older module. Below, it shows the module being installed inside a standard electrical wall box, demonstrating how it connects to the existing wiring for a light switch. The blue wire represents neutral, and the brown wire represents live, connecting to the module's input and output terminals.

GRUPPENSCHALTUNG UND WECHSELSCHALTUNG MÖGLICH

1 Handy bedient 2 oder mehr Empfänger



mehrere Handys bedienen 1 Empfänger

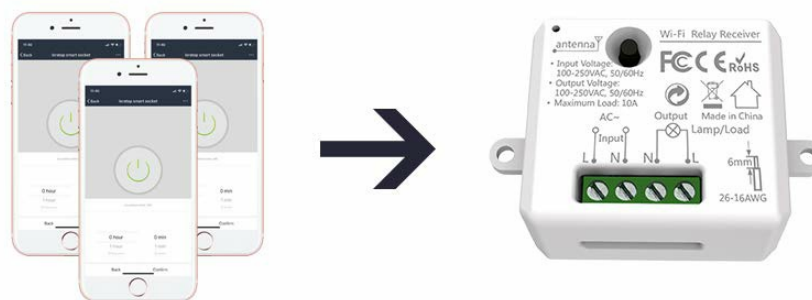


Image Description: This diagram provides step-by-step visual instructions for wiring the LoraTap Wi-Fi Relay Receiver. It shows how to connect the Live (L) and Neutral (N) input wires to the module, and then connect the module's output (N and L) to the lamp or load. The diagram also depicts the process of removing a wall plate, installing the module behind a switch, and securing it. It emphasizes the importance of correct wiring for safe and functional operation.

1. Turn off the power at the circuit breaker for the circuit you will be working on.
2. Open the electrical box or switch housing where you intend to install the module.
3. Identify the Live (L) and Neutral (N) wires for the input power supply.
4. Connect the input Live (L) and Neutral (N) wires to the corresponding 'Input' terminals on the LoraTap module.
5. Connect the Neutral (N) and Live/Load (L) wires leading to your appliance (e.g., lamp) to the corresponding 'Output' terminals on the LoraTap module.
6. Ensure all connections are secure. The module is designed for both surface and flush mounting.
7. Carefully place the module inside the electrical box, ensuring no wires are pinched.
8. Restore power at the circuit breaker.

2. App Pairing and Configuration

The LoraTap Wi-Fi Relay Receiver uses the Smart Life App for control and configuration.

1. Download the 'Smart Life' app from your smartphone's app store (iOS or Android).

2. Register or log in to your Smart Life account.
3. Ensure your smartphone is connected to a 2.4GHz Wi-Fi network (5GHz networks are not supported for initial pairing).
4. In the app, tap '+' or 'Add Device'.
5. Follow the in-app instructions to put the device into pairing mode. This usually involves pressing a button on the module or cycling its power. The indicator light on the module will typically flash rapidly.
6. Select the device type (e.g., 'Switch' or 'Electrical'). The app should automatically detect the LoraTap module.
7. Enter your Wi-Fi network password when prompted.
8. Once successfully paired, you can rename the device for easier identification (e.g., 'Living Room Light').

Operating Instructions

1. Remote Control via Smart Life App

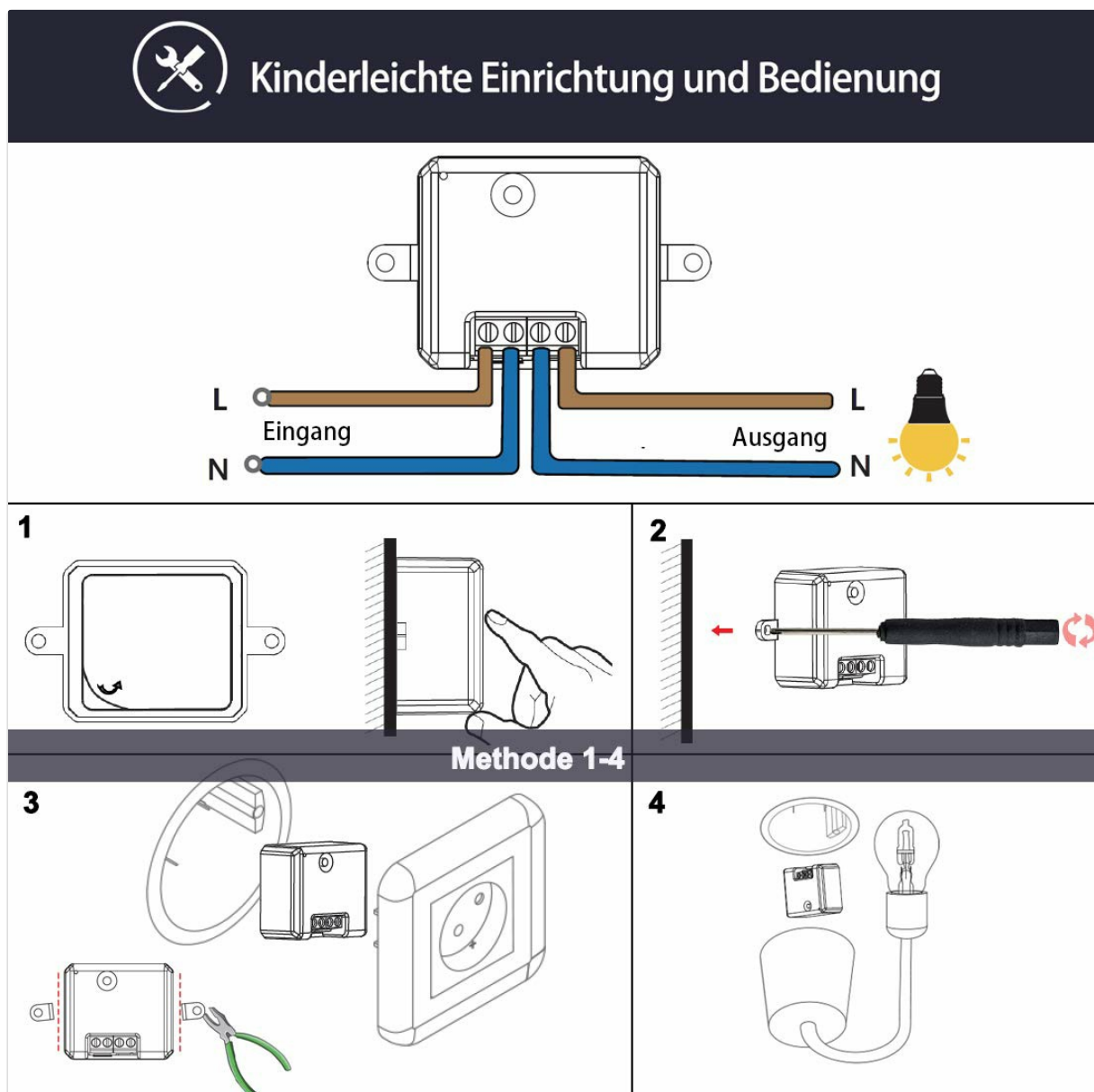


Image Description: This image showcases various features of the Smart Life App for controlling the LoraTap module. It highlights 'Remote Control' allowing operation from anywhere, 'Create Schedules' for automated on/off times, and 'Countdown Function' for temporary operation. The app interface displays options for setting timers and managing connected devices.

- Open the Smart Life app on your smartphone.

- Select the LoraTap module you wish to control from the device list.
- Tap the power icon to turn the connected appliance on or off.

2. Scheduling and Timers

- Within the device control interface in the Smart Life app, navigate to the 'Schedule' or 'Timer' section.
- You can set one-time, daily, or weekly schedules for the device to turn on or off automatically.
- Use the 'Countdown' function to set a specific duration after which the device will turn off.

3. Voice Control (Google Home / Amazon Alexa)



Alexa, schalte das Licht in der Küche ein.

funktionieren mit **Alexa, Google Home und IFTTT**

Voice Control

Image Description: This image shows a man holding a child in a kitchen, with a voice assistant speaker (Alexa) and a Google Home speaker depicted alongside the LoraTap module. The text indicates 'Voice Control' and shows an example command: "Alexa, turn on the light in the kitchen." This illustrates the seamless integration of the LoraTap module with popular voice assistant platforms for hands-free control.

- Ensure your LoraTap module is successfully paired with the Smart Life app.
- Open your Google Home or Amazon Alexa app.
- Link your Smart Life account within the Google Home/Alexa app's 'Skills' or 'Works with Google' section.
- Discover new devices. Your LoraTap module should appear.
- You can now control the device using voice commands, e.g., "Hey Google, turn on Living Room Light" or

"Alexa, turn off Kitchen Lamp."

4. Group Control

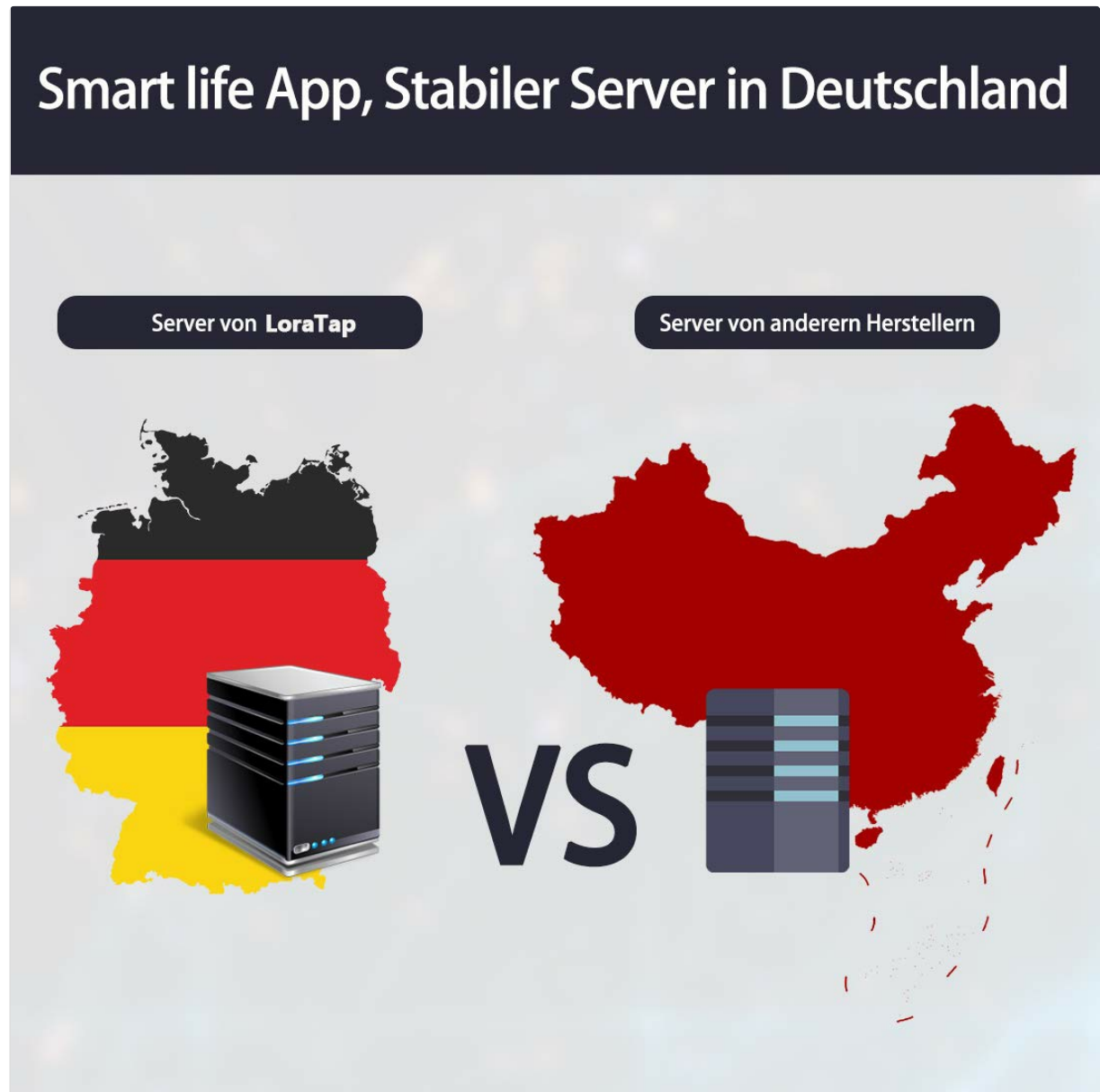


Image Description: This image demonstrates the group control functionality within the Smart Life App. It shows a single smartphone controlling multiple LoraTap modules simultaneously, indicating that one app can manage several receivers. Conversely, it also illustrates that multiple smartphones can control a single LoraTap receiver, allowing shared access for family members. The app interface displays a power button and timer options for each device.

- In the Smart Life app, you can create groups of devices to control multiple LoraTap modules simultaneously.
- This allows you to turn on/off all lights in a room or area with a single command or tap.

Maintenance

- The LoraTap Wi-Fi Relay Receiver requires minimal maintenance.
- Ensure the device is kept clean and free from dust. Disconnect power before cleaning.
- Periodically check wiring connections for tightness, especially after initial installation.
- Avoid exposing the device to direct sunlight or extreme heat, which can affect its lifespan.

Troubleshooting

- **Device not responding:** Check if the power supply to the module is active. Verify your Wi-Fi network is operational and your smartphone has internet access. Ensure the module is within Wi-Fi range.
- **Unable to pair:** Confirm your Wi-Fi network is 2.4GHz. Ensure the module is in pairing mode (indicator light flashing rapidly). Try resetting the module by cycling its power or holding the pairing button (if available) for several seconds.
- **Voice control not working:** Confirm the Smart Life account is correctly linked in your Google Home or Alexa app. Ensure the device name is recognized by the voice assistant. Try re-discovering devices in the voice assistant app.
- **Intermittent connection:** This may indicate a weak Wi-Fi signal. Consider moving your Wi-Fi router closer or using a Wi-Fi extender.
- **Device offline in app:** Check your home Wi-Fi network. If the network is down, the device will appear offline. If the network is up, try restarting the module by turning off and on its power supply.

Warranty

LoraTap offers a lifetime quality guarantee for all its products. For warranty claims or service, please retain your proof of purchase.

Support

For further assistance, technical support, or inquiries, please refer to the contact information provided with your product packaging or visit the official LoraTap website.