

Serounder B07PB7YR94

Serounder 4-Digit PC Motherboard Diagnostic Card User Manual

Model: B07PB7YR94

1. INTRODUCTION

This manual provides detailed instructions for the installation, operation, and troubleshooting of your Serounder 4-Digit PC Motherboard Diagnostic Card. This tool is designed to assist in quickly identifying computer failures by displaying diagnostic codes and providing audible alerts.

The diagnostic card is compatible with both PCI and ISA bus architectures, offering broad compatibility for various PC systems. It features a 4-digit display for error codes and a series of indicator lights to monitor critical system signals.

2. PRODUCT OVERVIEW

The Serounder 4-Digit PC Motherboard Diagnostic Card is an essential tool for computer maintenance and repair. It helps diagnose issues by intercepting and displaying POST (Power-On Self-Test) codes generated by the BIOS during system startup. These codes correspond to specific hardware conditions or errors, allowing technicians to pinpoint problems efficiently.

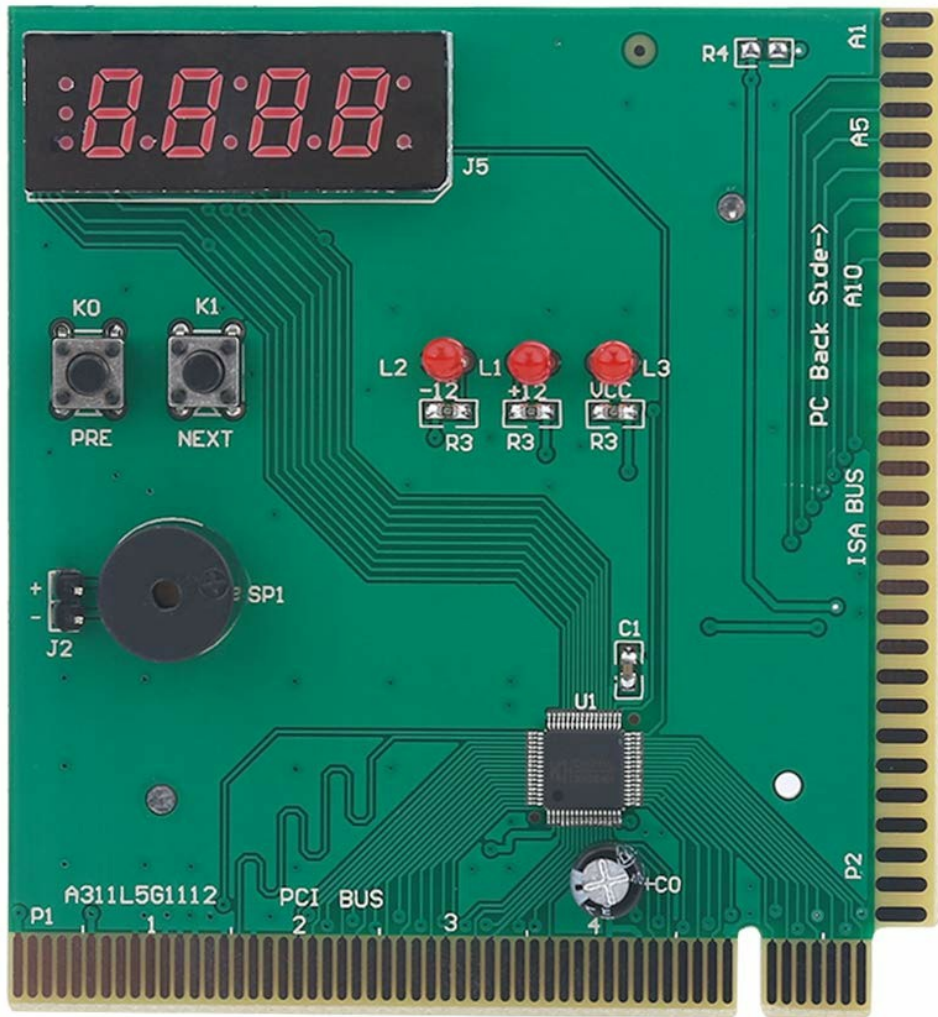
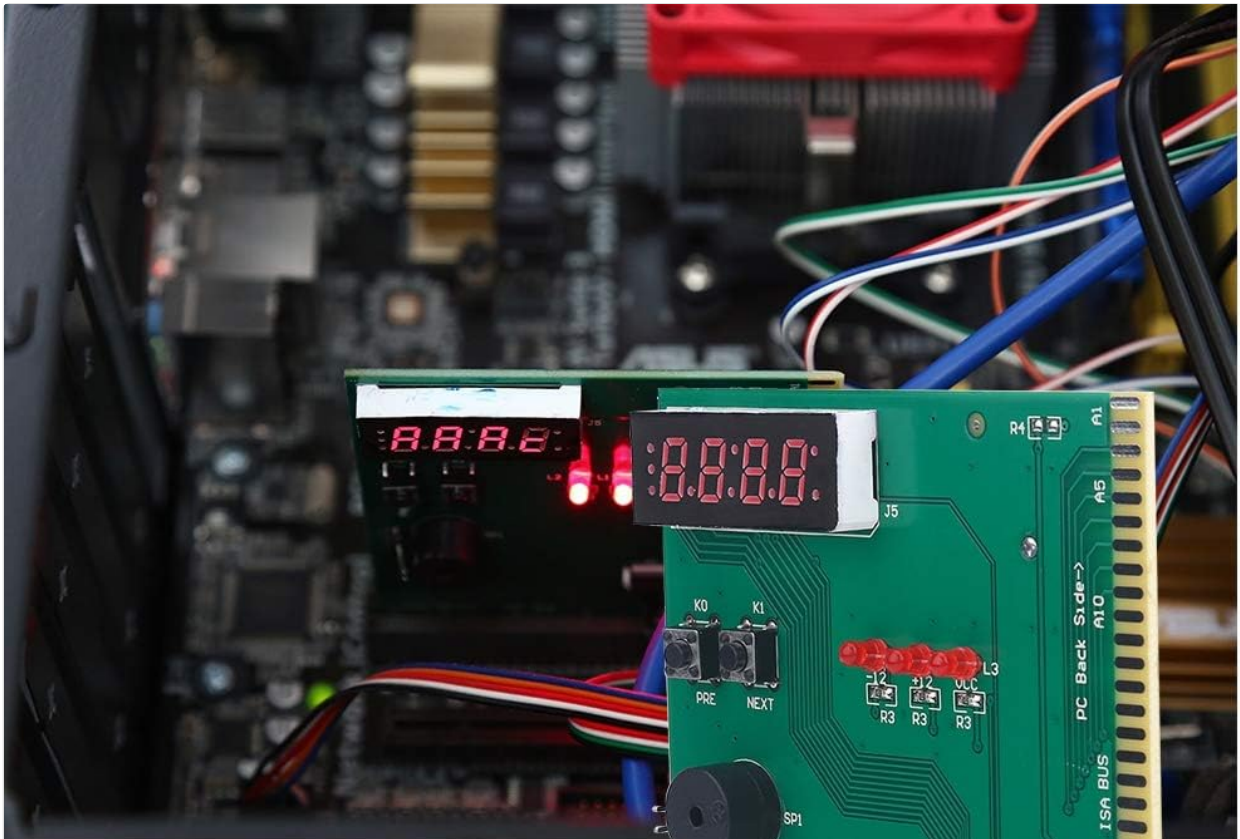


Image: The diagnostic card installed in a PC, displaying a 4-digit code.



- Can accurately, stably and fast find computer failures
- Suitable for both ISA bus and PCI bus

Image: Front view of the diagnostic card, highlighting its components.

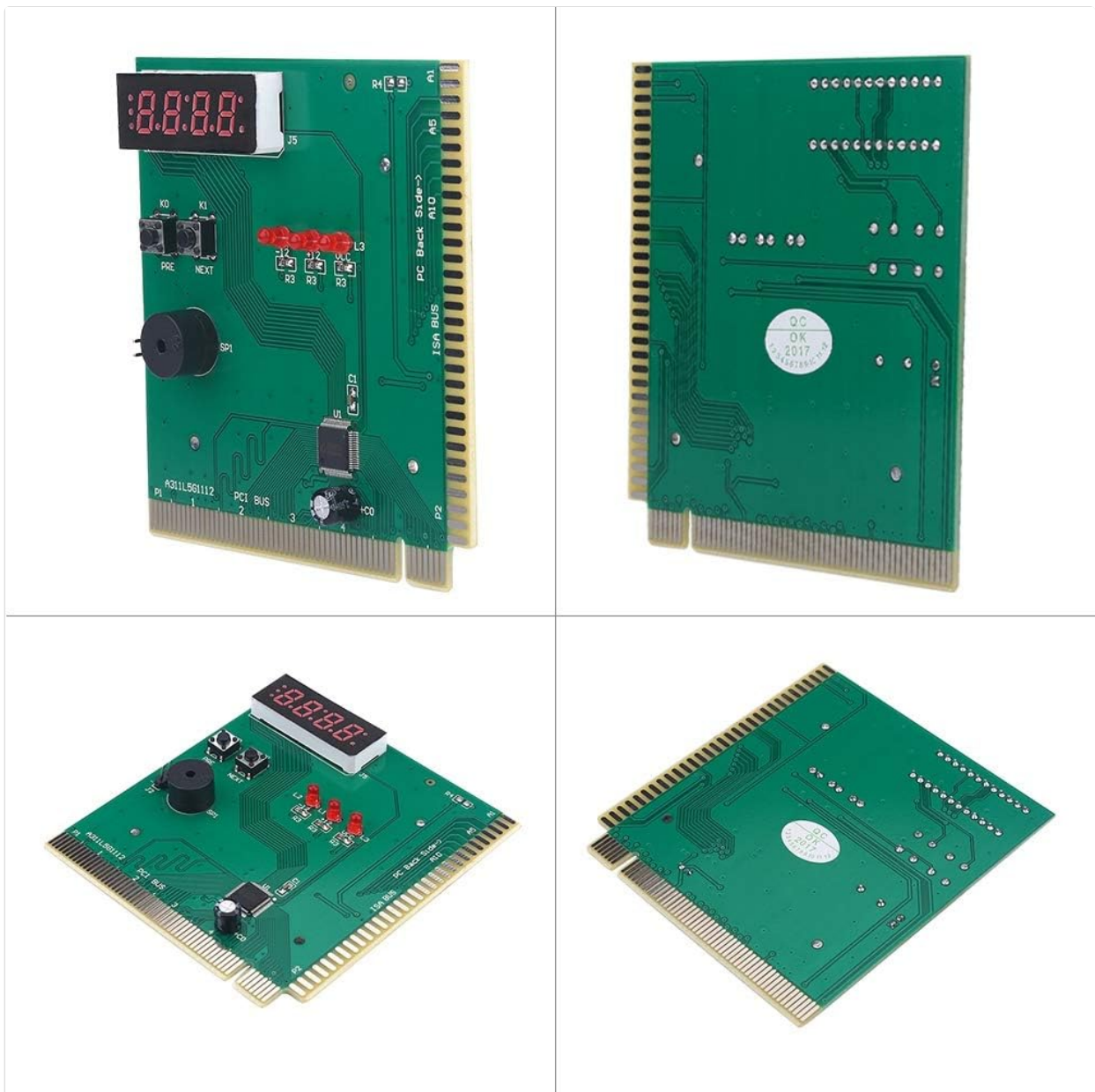


Image: Various angles of the diagnostic card, showing its design.

3. FEATURES

- Accurately, stably, and quickly identifies computer failures.
- Utilizes a four-digit fault code display for clear error identification.
- Includes audible alerts to report faults.
- Designed with anti-insertion and misinsertion protection to prevent damage to components.
- Compatible with both ISA bus and PCI bus slots.

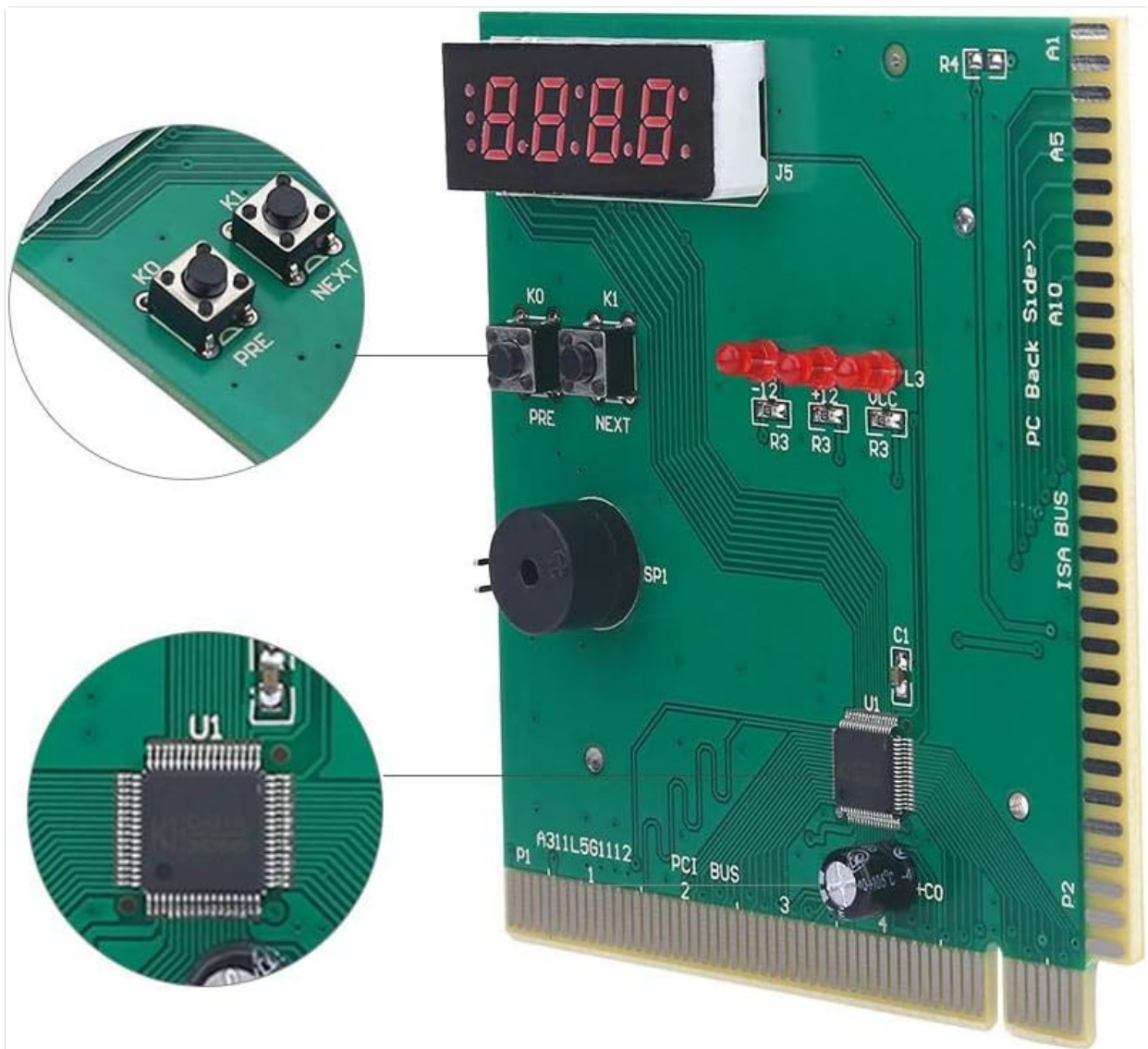


Image: Close-up of the diagnostic card's buttons and main chip.

4. SETUP

1. **Power Off:** Ensure your computer system is completely powered off and unplugged from the main power source before installation.
2. **Open Case:** Open the computer case to access the motherboard.
3. **Locate Slot:** Identify an available PCI or ISA expansion slot on your motherboard.
4. **Insert Card:** Carefully align the diagnostic card with the chosen slot and firmly press it down until it is securely seated. Ensure it is fully inserted to establish proper contact.
5. **Close Case:** Close the computer case and reconnect the power cable.

5. OPERATING INSTRUCTIONS

Once the diagnostic card is installed, power on your computer. The card will automatically begin to display POST codes as the system initiates. Observe the 4-digit display and the indicator lights for diagnostic information.

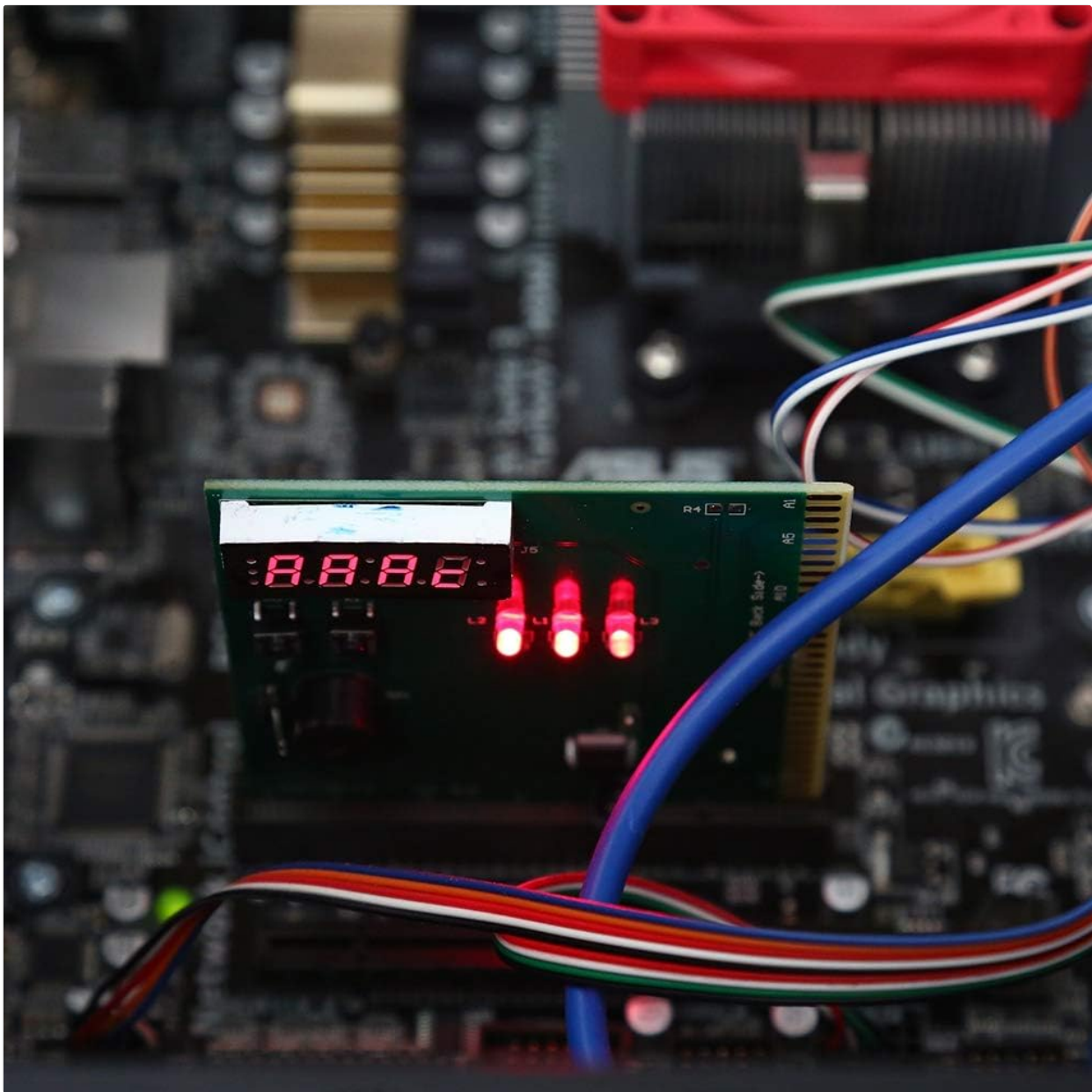


Image: The diagnostic card actively displaying codes during system operation.

5.1. Indicator Functions

The diagnostic card features several indicator lights, each corresponding to a specific system signal. Understanding these indicators is crucial for accurate diagnosis:

- **CLK (Clock):** For both ISA and PCI, this light should be on when the board is powered, even without a CPU. If off, the CLK signal is faulty.
- **BIOS:** This light will flash when the motherboard is running and there is activity (reading) on the BIOS.
- **IRDY (Initiator Ready):** This light will flash when an IRDY signal is present. If it does not light up, there is no IRDY signal.
- **OSC (Oscillation):** When the board is powered on (empty board), this light should be constantly on if the ISA slot has main vibration. If off, there is an oscillation failure.
- **FRAME:** This light will flash during a circular frame operation. It will be constantly on during idle periods.
- **RST (Reset):** This light indicates the reset signal.
- **RESET:** Upon power-on or pressing the RESET switch, this light will illuminate for approximately half a second and then turn off. If the light remains on, it indicates a problem with the motherboard's reset pin connection (e.g., connected to an acceleration switch) or a faulty reset circuit.

- **12V:** When the board is powered on (empty board), this light should be constantly on. If off, it indicates a voltage issue or a short circuit on the motherboard.
- **-12V:** Similar to the 12V indicator, this light should be constantly on when the board is powered. If off, it indicates a voltage issue or a short circuit.
- **5V:** Similar to the 12V indicator, this light should be constantly on when the board is powered. If off, it indicates a voltage issue or a short circuit.
- **-5V:** This indicator is specific to ISA slots. It should be constantly on when the board is powered. If off, it indicates a voltage issue or a short circuit.
- **3V3:** This 3.3V voltage indicator is unique to PCI slots. When the board is powered on (empty board), this light should be constantly on. Note that some PCI slot motherboards may not provide this voltage, in which case the light will be off.



Image: Detailed view of the diagnostic card's display and controls.

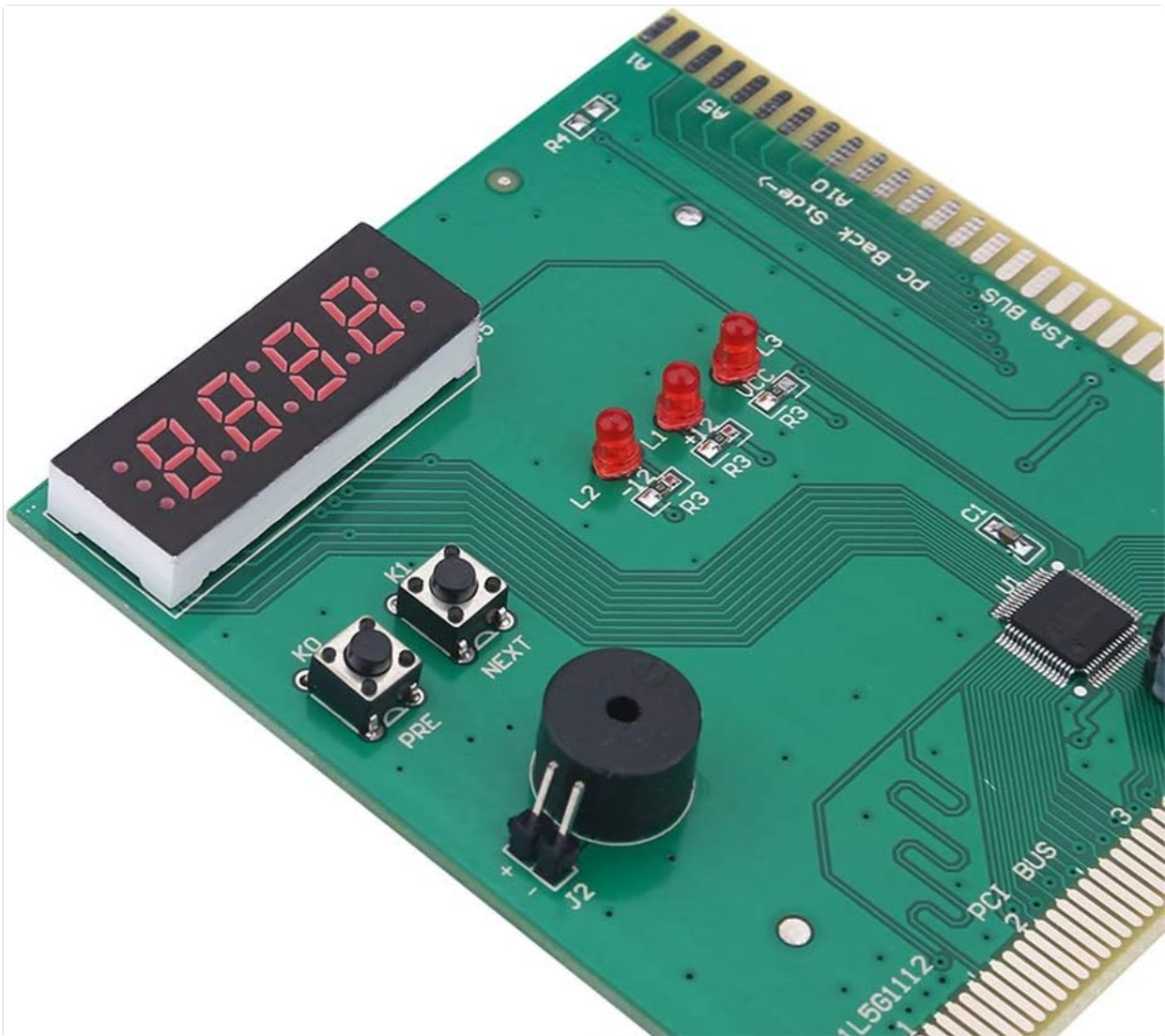


Image: Close-up of the diagnostic card's buttons and speaker.

6. TROUBLESHOOTING

- **No Display:** Ensure the diagnostic card is fully seated in the PCI or ISA slot. Verify that the computer is receiving power.
- **Incorrect Codes:** Refer to your motherboard's BIOS manual for a comprehensive list of POST codes and their meanings. Codes can vary between BIOS manufacturers (e.g., AMI, Award, Phoenix).
- **Indicator Lights Not Functioning:** Check for proper card insertion and ensure the motherboard is powered. Some older ISA slots may not provide all expected voltages.
- **Card Not Recognized:** While the card operates independently of the OS, ensure the slot itself is functional. Try the card in a different slot if available.

7. SPECIFICATIONS

Feature	Description
Usage	Maintenance tool for computer motherboards
Components	All produced by patch components

Feature	Description
Display	LCD characters display (4-digit)
Color	Green PCB (as shown in images)
Package Weight	48g
Compatible Bus	PCI, ISA



Image: Back view of the diagnostic card.

8. PACKAGE CONTENTS

The package includes the following items:

- 1 x Serounder 4-Digit PC Motherboard Diagnostic Card
- 1 x English User Manual (this document)

9. WARRANTY AND SUPPORT

For warranty information and technical support, please refer to the documentation provided with your purchase or contact Serounder customer service through the official channels. Keep your purchase receipt for warranty claims.