

Manuals+

[Q & A](#) | [Deep Search](#) | [Upload](#)

manuals.plus /

- › [5Rcom](#) /
- › [5Rcom Dual Monitor Stand Riser \(Model 1\) Instruction Manual](#)

5Rcom 1

5Rcom Dual Monitor Stand Riser (Model 1) Instruction Manual

[Introduction](#) [Safety Information](#) [Package Contents](#) [Setup & Assembly](#) [Operating](#)
[Instructions](#) [Maintenance](#) [Troubleshooting](#) [Specifications](#) [Warranty & Support](#)

1. INTRODUCTION

This instruction manual provides essential information for the proper assembly, operation, and maintenance of your 5Rcom Dual Monitor Stand Riser, Model 1. This ergonomic desk accessory is designed to elevate your monitors to an optimal viewing height, improve posture, and enhance desktop organization. Please read this manual thoroughly before use to ensure safe and efficient operation.



Figure 1: The 5Rcom Dual Monitor Stand Riser in a typical setup.

2. SAFETY INFORMATION

- Ensure all components are securely fastened during assembly.
- Do not exceed the maximum load capacity of 44 pounds (20 kg).
- Place the stand on a stable, level surface to prevent tipping.
- Keep small parts away from children to avoid choking hazards.
- Avoid exposing the stand to excessive moisture or direct sunlight.

3. PACKAGE CONTENTS

Verify that all parts listed below are present before beginning assembly. If any parts are missing or damaged, please contact customer support.

- Main Center Panel (1)
- Side Panels (2)
- Support Legs (6)
- Connecting Pins (various)
- Screws (various)
- Non-slip Foot Pads (6)
- Assembly Tool (screwdriver)



Figure 2: All components included in the package.

4. SETUP & ASSEMBLY

The 5Rcom Dual Monitor Stand Riser is designed for quick and easy assembly. A basic screwdriver is the only tool required, which is included in the package.

1. **Attach Support Legs:** Secure the support legs to the underside of the main center panel and side panels using the

provided screws. Ensure they are firmly tightened.

2. **Connect Panels:** Use the connecting pins to join the side panels to the main center panel. The design allows for adjustable length and angle.
3. **Apply Foot Pads:** Attach the non-slip foot pads to the bottom of each support leg to prevent skidding and protect your desk surface.

CUSTOMIZE YOUR DESKTOP LAYOUT

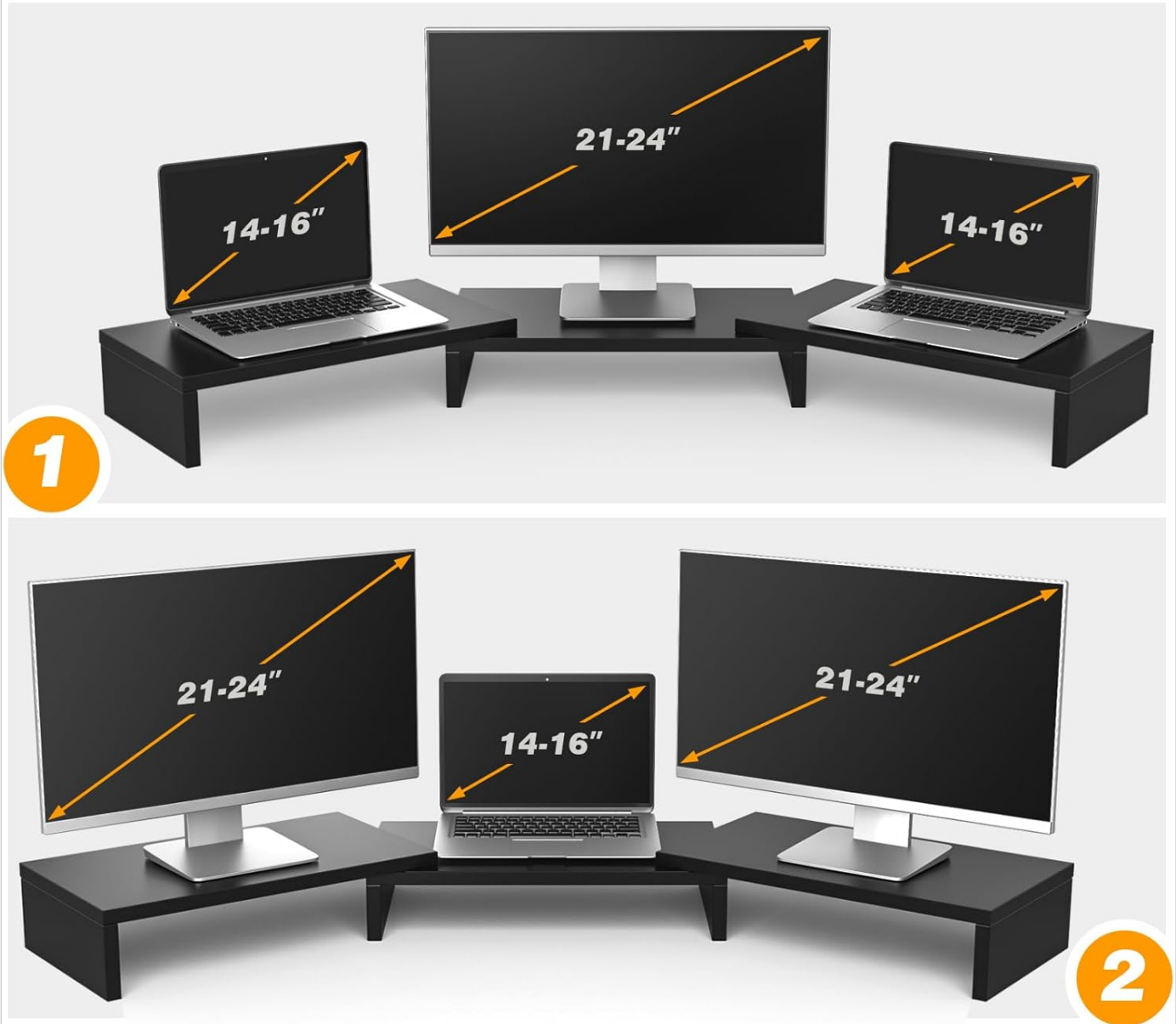


Figure 3: Visual guide for connecting the stand components.

Your browser does not support the video tag.

Video 1: A demonstration of the 5Rcom Dual Monitor Stand Riser assembly and setup.

5. OPERATING INSTRUCTIONS

5.1 Ergonomic Positioning

Position your monitor(s) on the stand so that the top of the screen is at or slightly below eye level. This helps maintain a neutral neck posture, reducing strain on your neck, shoulders, and back.

IMPROVE YOUR VIEWING EXPERIENCE

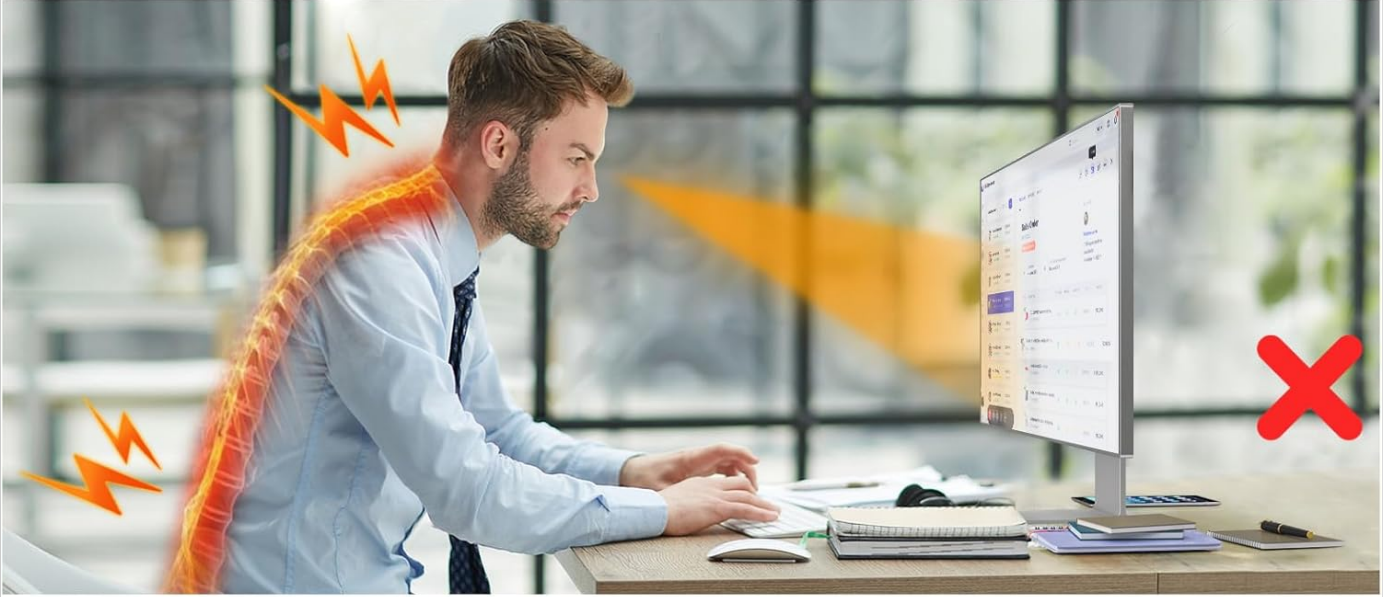


Figure 4: Improve your viewing experience and posture by elevating your monitor.

5.2 Adjustable Length and Angle

The stand features an adjustable design, allowing you to customize its length from 33 inches to 48.2 inches and adjust the angle of the side panels. This flexibility accommodates various desk sizes and monitor setups (e.g., straight line, L-shape, or curved for corner desks).

CUSTOMIZE YOUR DESKTOP LAYOUT

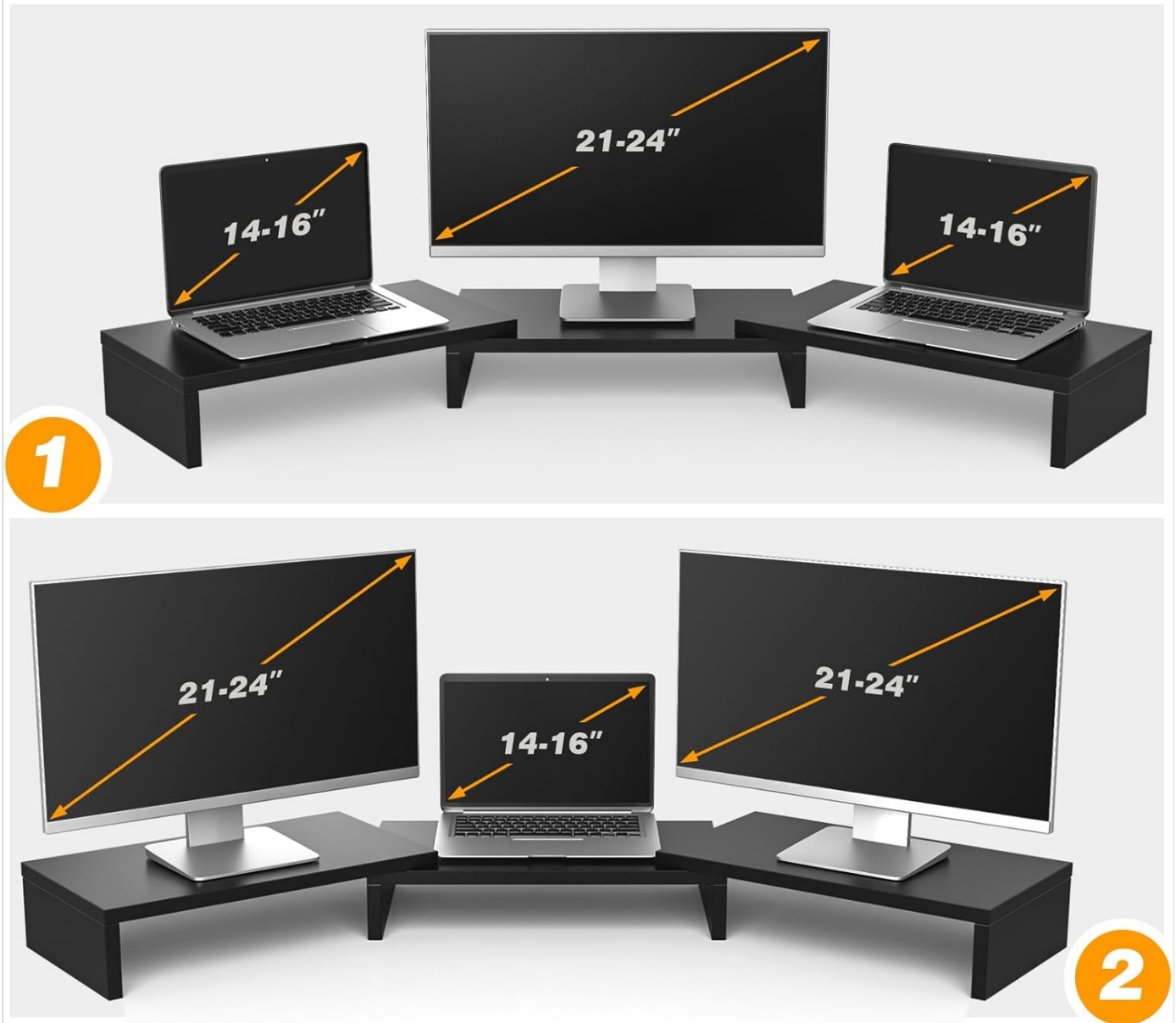


Figure 5: Customize your desktop layout with adjustable length and angle.

5.3 Desktop Organization

Utilize the space underneath the stand to store office supplies, keyboards, mice, laptops, or other accessories, helping to maintain a tidy and productive workspace.



Figure 6: Transform a cluttered desk into an organized workspace.

A GOOD DAY STARTS WITH A NEAT DESKTOP

ROTATED FOR PLACEMENT



Figure 7: A well-organized desktop starts with proper elevation and storage.

Your browser does not support the video tag.

Video 2: A brief overview of the 5Rcom Monitor Stand's features and versatility.

6. MAINTENANCE

The stand is constructed from high-quality 12mm matte black MDF panel with a blister finishing, providing a scratch and fingerprint-resistant surface that also resists water. To clean, simply wipe with a damp cloth. Avoid abrasive cleaners that may damage the finish.

WEAR-RESISTANT SURFACE COATING

**EASY TO CLEAN,
NOT EASY TO SCRATCH**



NON-SLIP FOOT PADS
**ENHANCE STABILITY &
AVOID SCRATCHING THE TABLE TOP**

Figure 8: The wear-resistant surface coating is easy to clean.

7. TROUBLESHOOTING

7.1 Stand Instability

- **Check Connections:** Ensure all screws and connecting pins are fully tightened.
- **Level Surface:** Verify that the desk surface where the stand is placed is level.
- **Foot Pads:** Confirm that all non-slip foot pads are securely attached and making contact with the desk.

7.2 Difficulty Adjusting Length/Angle

- **Clear Obstructions:** Ensure no objects are blocking the movement of the side panels.
- **Proper Alignment:** The connecting pins should align correctly with the adjustment holes. Do not force the panels if they resist movement.

8. SPECIFICATIONS

Feature	Detail
Brand	5Rcom
Model Number	1
Material	Wood (MDF)
Color	Black
Product Dimensions (LxWxH)	48.2 x 9.3 x 3.7 inches (adjustable length)
Adjustable Length Range	33 inches to 48.2 inches
Item Weight	7.2 pounds
Load Capacity	44 pounds
Assembly Required	Yes
UPC	762021378093

PRODUCT DIMENSION

MORE SPACE FOR USING

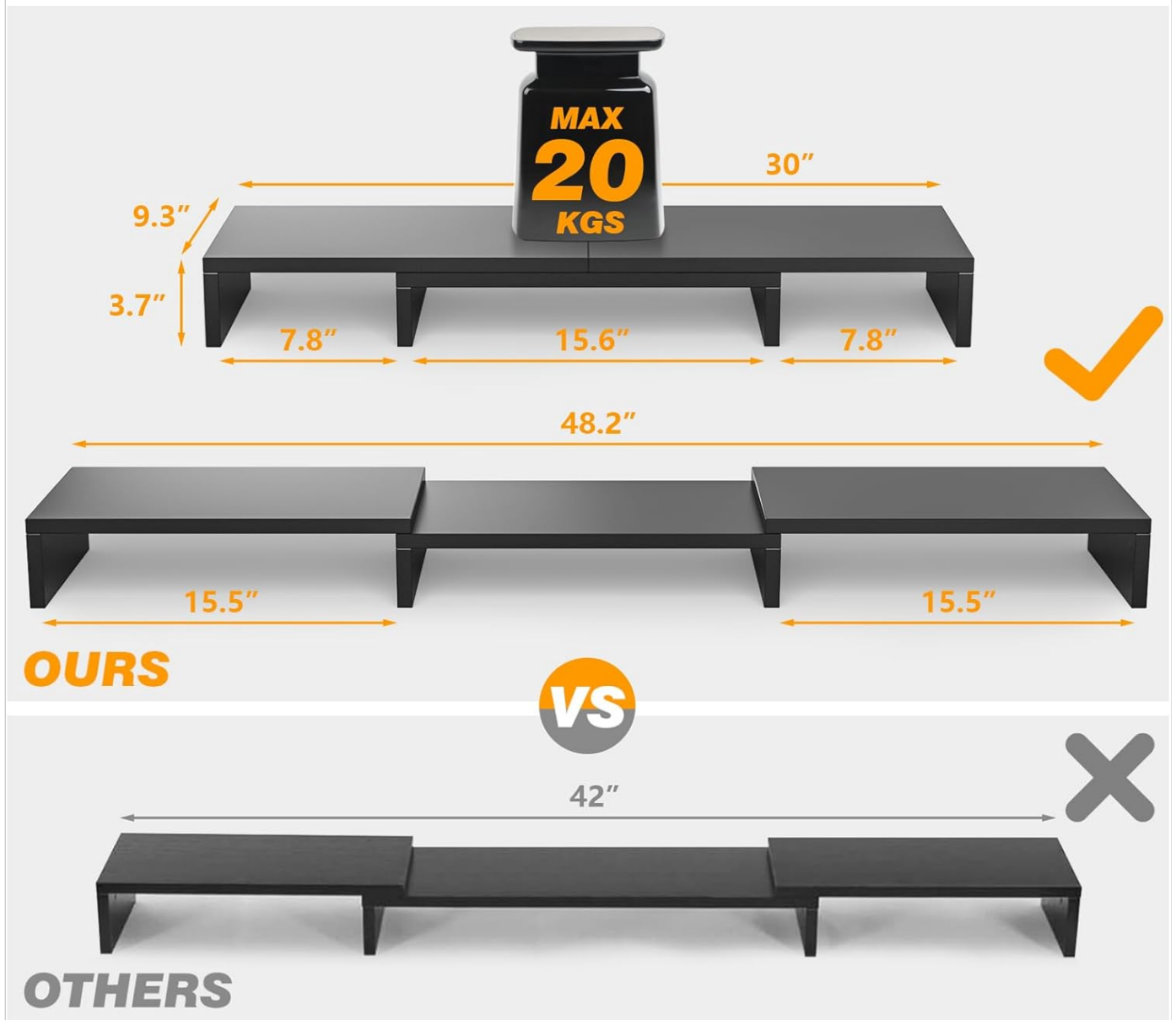


Figure 9: Detailed product dimensions.

9. WARRANTY & SUPPORT

For warranty information, technical support, or to report missing/damaged parts, please contact 5Rcom customer service through the retailer where the product was purchased. Please retain your proof of purchase for warranty claims.