

SECRUI D017

SECRUI D017 Add-On Door Contact Sensor Unit Instruction Manual

Model: D017

1. INTRODUCTION

This manual provides instructions for the SECRUI D017 Add-On Door Contact Sensor Unit. Please note that this unit is an expansion component and does not function independently. It requires a compatible SECRUI receiver, such as models M508 or M520, to operate as part of a complete security system.

The D017 sensor is designed to detect the opening and closing of doors or windows, sending a signal to a paired receiver to trigger an alert. Its wireless design ensures easy installation and flexible placement.

2. PRODUCT OVERVIEW

2.1 Components

The SECRUI D017 Add-On Door Contact Sensor Unit package includes the following:

- 1 × Sensor Unit (main part with LED indicator)
- 1 × Magnet Part
- 1 × 12V Battery (pre-installed in sensor)
- 1 × Adhesive Tape
- 2 × Screws
- 2 × Anchors
- 1 × User Manual (this document)



Image: Contents of the SECRUI D017 Add-On Door Contact Sensor Unit package, including the main sensor, magnet, adhesive, screws, and anchors.

2.2 Key Features

- **Add-On Unit:** Designed to expand an existing SECRUI wireless alarm system (requires compatible receiver like M508 or M520).
- **Easy Installation:** No wiring required, offering flexible placement with adhesive tape or screws.
- **LED Indicator:** Provides a visual alert for sensor activation and battery status.
- **Wireless Operation:** Ensures convenience and portability for various applications.
- **Activation Distance:** Sensor activates when the main unit and magnet are separated by less than 0.6 inches (1.5 cm).

This is part of system



Receiver

Sold seperately



Sensor

Doesn't work alone

Image: The SECRUI D017 Add-On Door Contact Sensor Unit, showing the main sensor component and its smaller magnet counterpart.

3. SETUP AND INSTALLATION

The D017 sensor is designed for straightforward installation. Ensure you have a compatible SECRUI receiver (e.g., M508, M520) already set up and ready for pairing.

3.1 Pairing with a Receiver

Before mounting, the sensor must be paired with your SECRUI receiver. Refer to your receiver's instruction manual for specific pairing steps. Typically, this involves putting the receiver into pairing mode and then activating the sensor (e.g., by separating and rejoining the sensor and magnet parts) to register it with the receiver. Each receiver can be paired with up to 40 D017 transmitters.

3.2 Mounting the Sensor Unit

The sensor unit consists of two parts: a larger main sensor and a smaller magnet. These two parts must be installed on a door/window and its frame, aligned with each other, and separated by no more than 0.4 inches (10mm) when the door/window is closed.

Product Installation Methods



Image: Examples of how the D017 sensor can be installed on different types of doors and windows, demonstrating versatile placement options.

You can choose between adhesive tape mounting or screw mounting:

1. Adhesive Tape Mounting:

- a. Clean the surface where the sensor will be mounted to ensure it is dry and free of dust.
- b. Peel off the protective backing from the adhesive tape and firmly press the main sensor part onto the desired location on the door or window frame.
- c. Align the magnet part with the main sensor part, ensuring the alignment marks are matched, and attach it to the door or window using its adhesive tape. The gap between the two parts should be less than 0.4 inches (10mm) when closed.

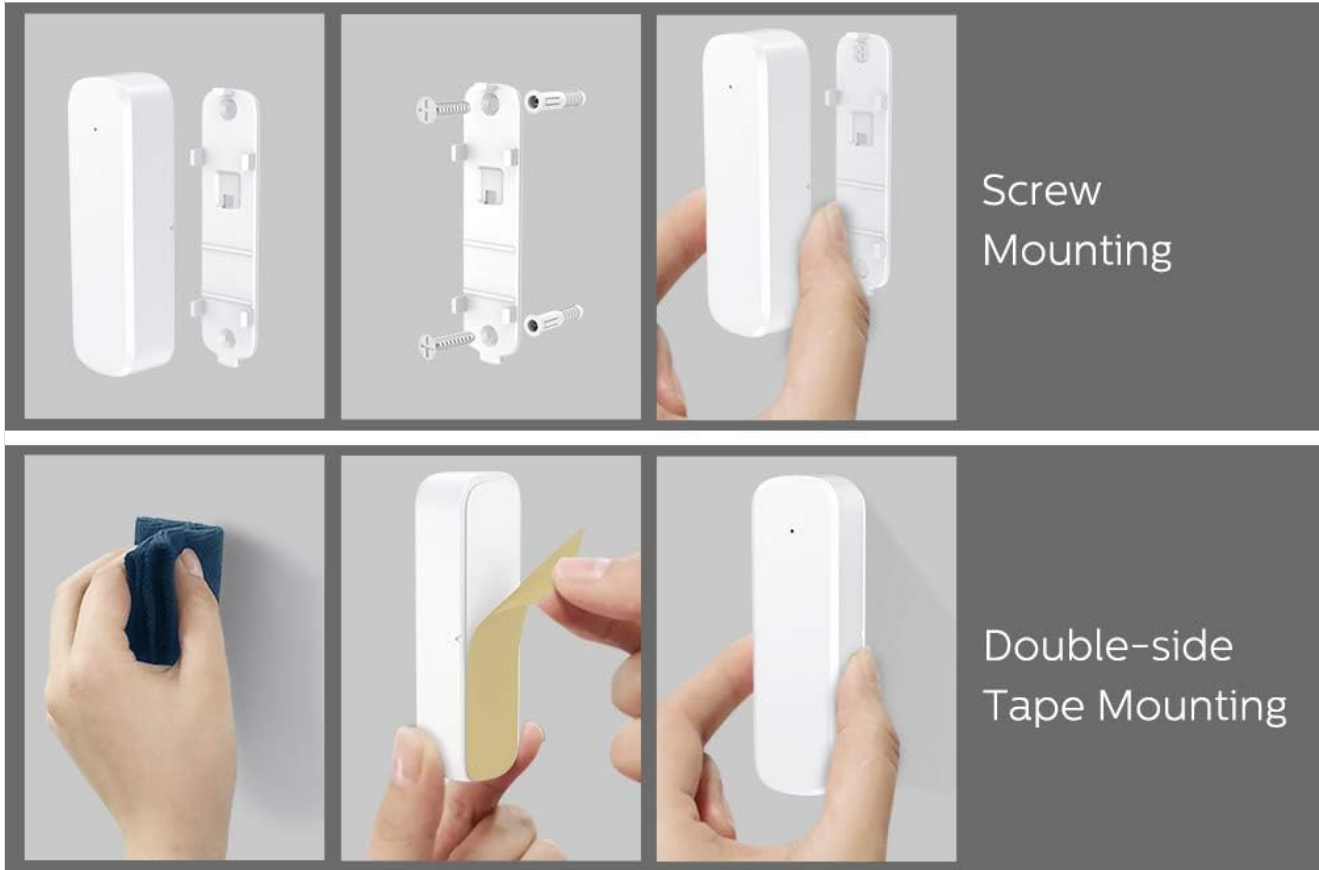
2. Screw Mounting:

- a. Separate the back plate from the main sensor unit.
- b. Position the back plate on the door or window frame and mark the screw holes.
- c. Drill pilot holes if necessary and secure the back plate with the provided screws and anchors.
- d. Slide the main sensor unit onto the secured back plate.
- e. Align the magnet part with the main sensor part, ensuring the alignment marks are matched, and attach it to the door or window using its adhesive tape or screws. The gap between the two parts should be less than 0.4 inches (10mm) when closed.

Installation Guild



Installation Gap ≤ 0.4 in



Screw
Mounting

Double-side
Tape Mounting

Image: Visual guide illustrating both screw mounting and double-sided tape mounting methods for the D017 sensor, highlighting the importance of a small installation gap.

3.3 Installation Tips

- Ensure the main sensor unit and magnet are installed on the same plane and are aligned.
- The activation gap between the sensor and magnet should be less than 0.4 inches (10mm) for reliable detection.
- Test the sensor after installation by opening and closing the door/window to confirm the receiver triggers an alert.

4. OPERATION

Once installed and paired with a compatible SECRUI receiver, the D017 sensor operates automatically.

- **Detection:** When the door or window to which the sensor is attached opens, the main sensor unit and the magnet part separate. If the separation distance exceeds approximately 0.6 inches (1.5 cm), the sensor will transmit a signal to the paired receiver.
- **Alert:** Upon receiving the signal, the receiver will activate its programmed chime or alarm sound, and its LED

indicator may flash.

- **LED Indicator:** The small LED on the main sensor unit will briefly flash when activated, indicating that a signal has been sent.

Separated more than 0.39inch (10mm)
The receiver will keep beeping

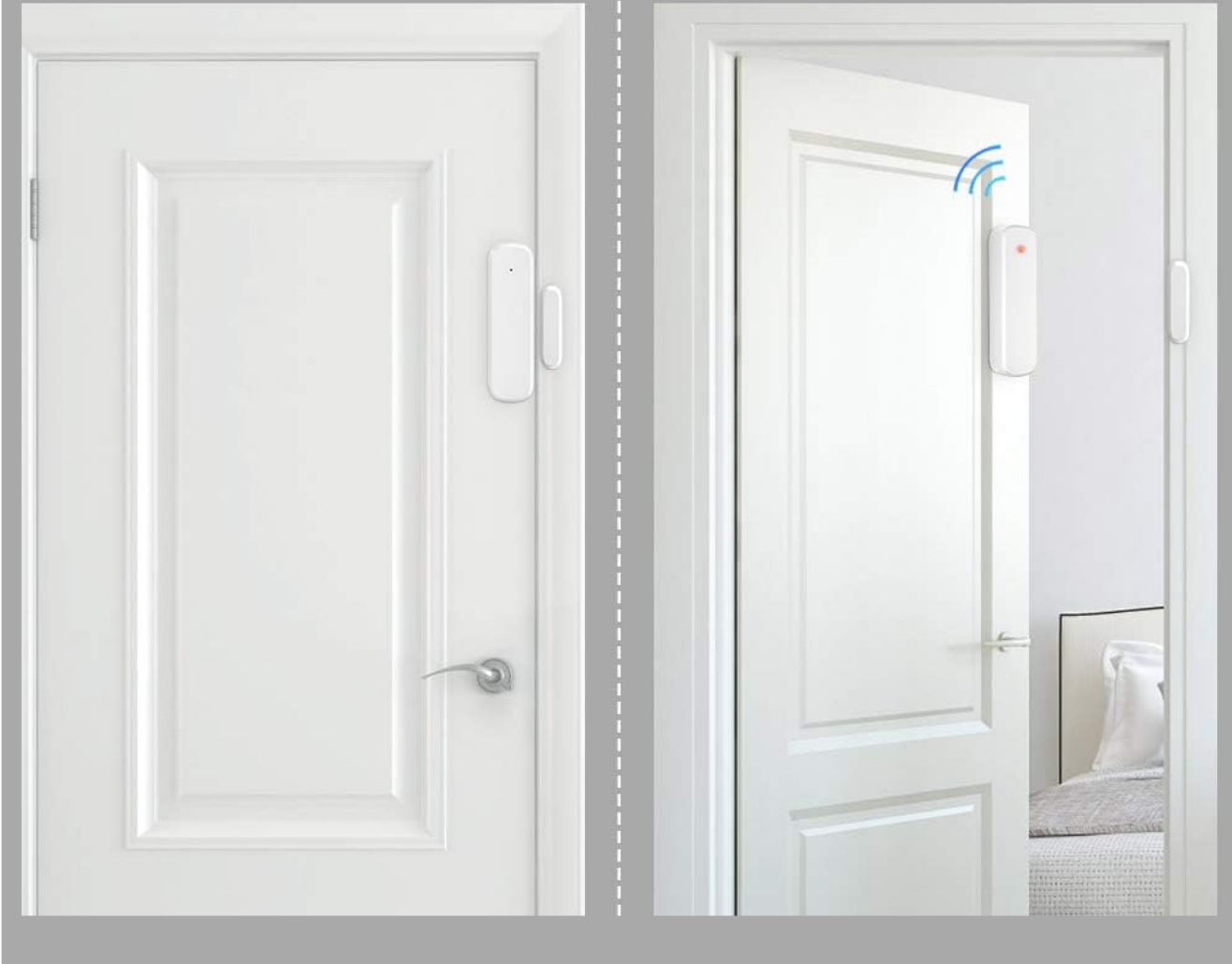


Image: The D017 sensor installed on a door, demonstrating how the receiver triggers an alert when the sensor and magnet parts are separated.

4.1 System Demonstration Video

Your browser does not support the video tag.

Video: This official seller video demonstrates the setup and operation of a SECRUI wireless door alarm system, including the interaction between the sensor and receiver. Note that this product is only the add-on sensor, and a receiver is sold separately.

5. MAINTENANCE

5.1 Battery Replacement

The D017 sensor is powered by one 12V 23A Alkaline battery. When the battery is low, the sensor's performance may degrade, or it may stop transmitting signals. Replace the battery as follows:

1. Carefully remove the main sensor unit from its mounting location (if screw-mounted, detach from the back plate; if adhesive-mounted, gently pry it off).
2. Open the battery compartment cover, usually located on the back or side of the main sensor unit.
3. Remove the old 12V 23A battery.
4. Insert a new 12V 23A Alkaline battery, ensuring the correct polarity (+/-).
5. Close the battery compartment cover and re-mount the sensor unit.
6. Test the sensor to ensure it is functioning correctly with the receiver.

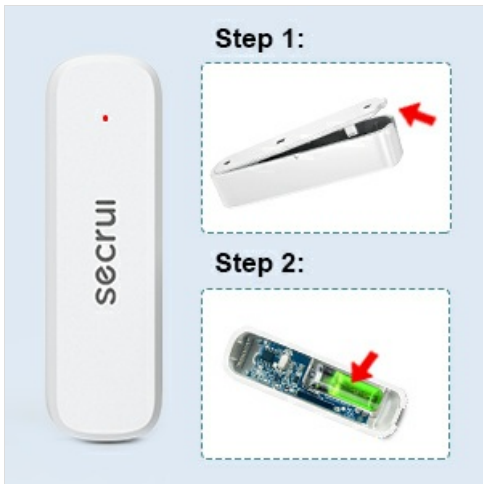


Image: A visual guide demonstrating the steps for replacing the 12V battery within the D017 sensor unit.

5.2 Cleaning

Wipe the sensor unit with a soft, dry cloth to remove dust or dirt. Do not use liquid cleaners or abrasive materials, as these can damage the unit.

6. TROUBLESHOOTING

If your SECRUI D017 sensor is not functioning as expected, consider the following:

- **Sensor Not Triggering:**

- Check the gap between the main sensor and magnet. It must be less than 0.4 inches (10mm) when closed and separate by more than 0.6 inches (1.5 cm) to trigger.
- Ensure the sensor and magnet are properly aligned.
- Verify the battery in the sensor is not depleted. Replace if necessary.

- **Receiver Not Alerting:**

- Confirm the sensor is correctly paired with the receiver. Re-pair if unsure.
- Check the receiver's power supply and ensure it is plugged in and functioning.
- Ensure the receiver's volume is not set to mute or a very low level.
- The sensor and receiver might be out of range. Try moving the receiver closer to the sensor or removing obstructions.

- **False Alarms:**

- Ensure the sensor and magnet are securely mounted and do not shift with vibrations or movement.
- Check for any magnetic interference near the sensor.

If issues persist, consult the full manual for your SECRUI receiver or contact customer support.

7. SPECIFICATIONS

Attribute	Value
Model Number	D017
Manufacturer	SECRUI
Item Weight	1.58 ounces
Product Dimensions	3 x 2 x 2 inches
Color	White
Material	ABS
Power Source	Battery-Powered
Battery Type	1 x 12V 23A Alkaline Battery
Installation Method	Screw-In & Self-Adhesive
Special Features	Easy to Install
Activation Gap	Less than 0.6 inches (1.5 cm) separation to trigger

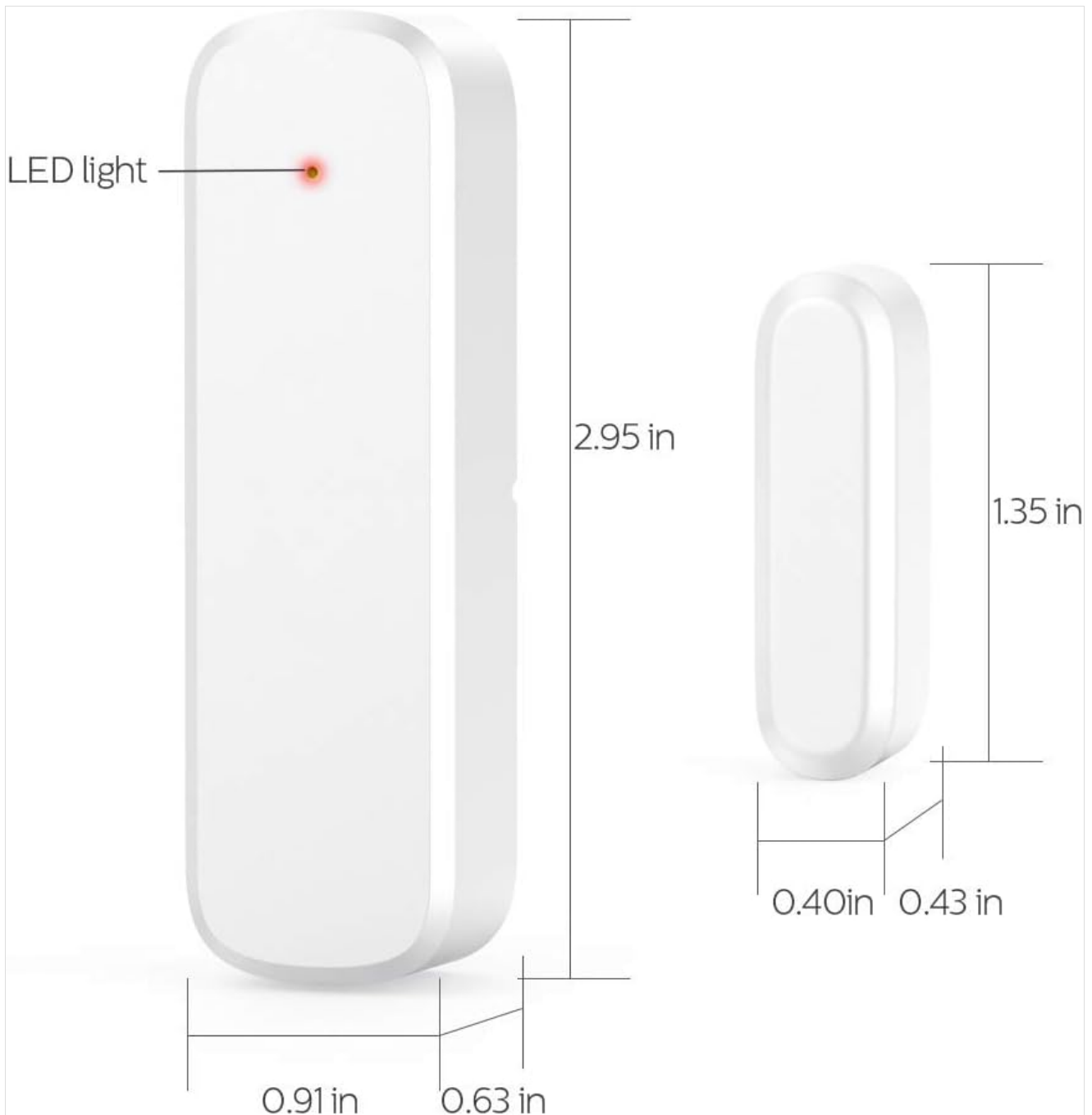


Image: Detailed dimensions of the SECURI D017 sensor unit and its magnet part.

8. WARRANTY AND SUPPORT

For warranty information and customer support, please refer to the documentation included with your complete SECURI wireless alarm system or visit the official SECURI website. You may also contact your retailer for assistance.

For further inquiries, please reach out to SECURI customer service through their official channels.