

## CELSIUS FGSS1206

# CELSIUS Sparkling Fuji Apple Pear Energy Drink User Manual

Model: FGSS1206

## 1. PRODUCT OVERVIEW

The CELSIUS Sparkling Fuji Apple Pear is a functional essential energy drink designed as a premium alternative to traditional energy drinks. It aims to support an active lifestyle by providing essential energy and accelerating metabolism.

This beverage is made with proven, premium ingredients, 7 essential vitamins, and contains zero sugar. It is free from artificial colors, aspartame, and high fructose corn syrup. CELSIUS Sparkling Fuji Apple Pear is also vegan, gluten-free, and Kosher certified.

The proprietary MetaPlus blend includes green tea extract with EGCG, guarana seed extract, ginger root for flavor and digestion, vitamin C for immune support, vitamin B for energy production, and chromium to help control hunger. This makes it an ideal pre-workout drink or a refreshing pick-me-up.



Image 1: A single can of CELSIUS Sparkling Fuji Apple Pear energy drink, highlighting its essential energy and zero sugar features.

## 2. INGREDIENTS AND NUTRITION

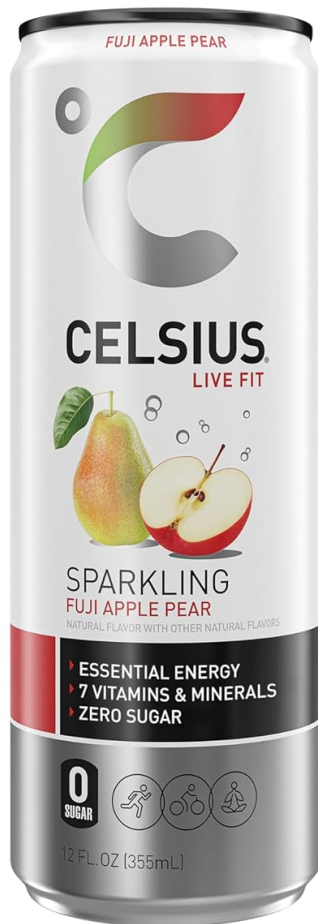
### Ingredients:

- Carbonated Filtered Water
- Taurine
- Citric Acid
- Guarana Seed Extract
- Green Tea Extract
- Malic Acid
- Caffeine
- Calcium Carbonate
- Ascorbic Acid
- Glucuronolactone
- Sucralose
- Natural Flavor

- Ginger Root Extract
- Calcium Pantothenate
- Niacinamide
- Pyridoxine Hydrochloride
- Riboflavin
- Beta-Carotene (color)
- Chromium Chelate
- Biotin
- Cyanocobalamin

### **Dietary Information:**

- Kosher
- Gluten Free
- Vegan
- Non-GMO
- Zero Sugar
- No Artificial Colors
- No Aspartame
- No High Fructose Corn Syrup



Contains 0% Juice

## Nutrition Facts

1 Serving Per Container

Serving Size 12 fl. oz (355mL)

Amount Per Serving

**Calories**

**10**

% Daily Value\*

**Total Fat** 0mg

**0%**

**Sodium** 5mg

**0%**

**Total Carbohydrate** 0mg

**0%**

**Protein** 0mg

**Calcium** 50mg

**4%**

**Vitamin C** 60mg

**70%**

**Riboflavin** 1.7mg

**130%**

**Niacin** 20mg

**130%**

**Vitamin B6** 2mg

**120%**

**Vitamin B12** 6mcg

**250%**

**Biotin** 300mcg

**1000%**

**Pantothenic Acid** 10mg

**200%**

**Chromium** 50mcg

**140%**

Not a significant source of sat fat, *trans* fat, cholesterol, dietary fiber, total sugar, added sugars, vitamin D, iron, and potassium.

\*The % Daily Value (DV) tells you how much a nutrient in a serving of food contributes to a daily diet. 2,000 calories a day is used for general nutrition advice.

**Caffeine Content: 200mg**

Ingredients: Carbonated Filtered Water, Taurine, Citric Acid, Guarana Seed Extract, Green Tea Extract, Malic Acid, Caffeine, Calcium Carbonate, Ascorbic Acid, Glucuronolactone, Sucralose, Natural Flavor, Ginger Root Extract, Calcium Pantothenate, Niacinamide, Pyridoxine Hydrochloride, Riboflavin, Beta-Carotene (color), Chromium Chelate, Biotin, Cyanocobalamin.

Image 2: Side view of a CELSIUS Sparkling Fuji Apple Pear can, displaying detailed nutrition facts and ingredients list.

## Key Ingredients:

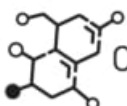
- **Chromium:** Helps control hunger.
- **Vitamin B:** Essential for energy production.
- **Ginger Root:** Aids in flavor and digestion.
- **Green Tea Extract with EGCG:** Part of the proprietary MetaPlus blend.
- **Guarana Seed Extract:** Contributes to essential energy.
- **Vitamin C:** Supports the immune system.

KEY  
INGREDIENTS

VITAMIN B



GREEN TEA  
EXTRACT



CHROMIUM



GINGER  
ROOT



VITAMIN B7  
(BIOTIN)

GUARANA  
SEED  
EXTRACT



VITAMIN C

Image 3: Visual representation of key ingredients found in CELSIUS energy drinks.

### 3. SETUP AND PREPARATION

---

CELSIUS Sparkling Fuji Apple Pear is ready to drink directly from the can. For optimal enjoyment, ensure the product is chilled before consumption.

- **Storage:** Store in a cool, dry place. Refrigerate for best taste.
- **Serving:** Serve chilled.

### 4. OPERATING GUIDELINES

---

To experience the full benefits of CELSIUS Essential Energy, consume one 12 fl oz can as needed. It is recommended to integrate it into your active lifestyle, whether as a pre-workout boost or a daily energy enhancer.

- **Recommended Intake:** Do not exceed two (2) servings per day.
- **Timing:** Can be consumed before exercise, during work, or whenever an energy boost is desired.

### 5. MAINTENANCE AND CARE

---

No specific maintenance is required for this product. Ensure cans are stored properly to maintain product quality and integrity.

- **Storage:** Keep cans in a cool, dry environment away from direct sunlight.
- **Disposal:** Please recycle empty cans according to local regulations.

### 6. TROUBLESHOOTING

---

If you experience any adverse reactions after consuming CELSIUS, discontinue use immediately and consult a healthcare professional. Common issues related to caffeine sensitivity may include jitters, nervousness, or difficulty sleeping.

- **Caffeine Sensitivity:** Not recommended for people who are caffeine sensitive.
- **Digestive Discomfort:** If digestive issues occur, consider reducing intake or consulting a healthcare provider.

### 7. IMPORTANT SAFETY INFORMATION

---

- Not recommended for children under 18.

- Not recommended for women who are pregnant or nursing.
- Statements regarding dietary supplements have not been evaluated by the FDA and are not intended to diagnose, treat, cure, or prevent any disease or health condition.
- Consult your physician before use if you have any medical conditions or are taking any medication.

## 8. PRODUCT SPECIFICATIONS

Feature	Detail
Product Dimensions	2.25 x 2.25 x 6.25 inches
Item Weight	9.38 Pounds (for 12-pack)
Item Model Number	FGSS1206
UPC	889392010183
Manufacturer	Celsius, Inc.
Units	144 Fluid Ounces (12 x 12 Fl Oz cans)
Brand	CELSIUS
Item Form	Carbonated Energy Drink
Flavor	Fuji Apple Pear
Number of Items	12
Package Information	Can
GTIN	889392010183

## 9. WARRANTY AND SUPPORT

Information regarding product warranty and customer support is not available in the provided product details. For specific inquiries, please refer to the manufacturer's official website or contact their customer service directly.

Manufacturer: Celsius, Inc.