

## Gen Game S5

# Gen Game S5 Wireless Controller User Manual

Model: S5 | Brand: Gen Game

## INTRODUCTION

Thank you for purchasing the Gen Game S5 Wireless Controller. This manual provides detailed instructions on how to set up, operate, and maintain your new controller. Please read this manual carefully before use to ensure proper functionality and to extend the lifespan of your device.

## SAFETY INFORMATION

- Keep the controller away from water and other liquids.
- Do not expose the controller to extreme temperatures or direct sunlight.
- Avoid dropping or subjecting the controller to strong impacts.
- Do not attempt to disassemble or modify the controller. This will void the warranty.
- Use only the specified charging voltage (DC 5V).

## PACKAGE CONTENTS

Please check the package contents upon opening. If any items are missing or damaged, contact your retailer.

- 1 x Gen Game S5 Wireless Controller
- 1 x USB Charging Cable (Note: Some packages may not include a charging cable. A standard Micro-USB cable is required for charging.)
- 1 x User Manual (This document)

## PRODUCT OVERVIEW

Familiarize yourself with the various parts of your Gen Game S5 Wireless Controller.



**Figure 1:** Front view of the Gen Game S5 Wireless Controller, showing the D-pad, left and right analog sticks, action buttons (A, B, X, Y), SELECT and START buttons, and the Gen Game logo.



**Figure 2:** Top view of the Gen Game S5 Wireless Controller, highlighting the Micro-USB charging port, L1/R1 shoulder buttons, and L2/R2 trigger buttons.

## SETUP

---

## 1. Charging the Controller

Before first use, fully charge the controller. Connect the Micro-USB end of the charging cable to the controller's charging port (located on the top, as shown in Figure 2) and the USB-A end to a USB power source (e.g., computer, USB wall adapter). The indicator lights will show charging status.

*Note: If your package did not include a charging cable, any standard Micro-USB cable compatible with mobile phones can be used.*

## 2. Pairing with Devices

The Gen Game S5 controller supports various platforms. Refer to the compatibility information below and the specific pairing instructions for your device.



**Figure 3:** Packaging of the Gen Game S5 Wireless Controller, indicating compatibility with Android systems, iOS (for China use only), PS3, Win7/Win8/Win10 PC, and featuring a telescopic stand and multimedia function.

### • Android Devices:

1. Ensure the controller is off.
2. Press and hold the **X** button + **HOME** button simultaneously until the indicator light flashes rapidly.
3. On your Android device, go to Bluetooth settings and search for new devices.
4. Select "Gen Game S5" (or similar name) from the list to pair. The indicator light will become solid once connected.

### • iOS Devices (China Use Only):

1. Ensure the controller is off.
2. Press and hold the **Y** button + **HOME** button simultaneously until the indicator light flashes rapidly.
3. On your iOS device, go to Bluetooth settings and search for new devices.
4. Select "Gen Game S5" (or similar name) from the list to pair. The indicator light will become solid once connected.
5. *Note: Compatibility with iOS devices may be limited to specific regions or applications.*

### • PC (Windows 7/8/10):

1. Ensure the controller is off.
2. Press and hold the **A** button + **HOME** button simultaneously until the indicator light flashes rapidly.
3. On your PC, go to Bluetooth settings and add a new device.
4. Select "Gen Game S5" (or similar name) from the list to pair. The indicator light will become solid once connected.
5. Alternatively, connect via USB cable for wired mode if supported by the game.

- **PlayStation 3 (PS3):**
  1. Connect the controller to the PS3 console using the USB charging cable.
  2. Press the **HOME** button. The controller should be recognized and assigned a player number.
  3. Once recognized, you may disconnect the USB cable for wireless play.

## OPERATING INSTRUCTIONS

---

### Basic Controls

The Gen Game S5 controller features standard gamepad controls:

- **D-Pad:** Directional Pad for precise movement or menu navigation.
- **Analog Sticks:** Two clickable analog sticks for 360-degree movement and camera control.
- **Action Buttons (A, B, X, Y):** For in-game actions.
- **L1/R1 Shoulder Buttons:** Top-mounted buttons for various actions.
- **L2/R2 Trigger Buttons:** Bottom-mounted triggers, often used for acceleration/braking or shooting.
- **SELECT/BACK Button:** Typically for menu navigation or secondary functions.
- **START/MENU Button:** Typically for pausing games or accessing menus.
- **HOME Button:** Powers on/off the controller, returns to home screen, or accesses system menus depending on the device.

### Power On/Off

- **To Power On:** Press the **HOME** button. The controller will attempt to connect to the last paired device.
- **To Power Off:** Press and hold the **HOME** button for approximately 5 seconds until the indicator lights turn off. The controller will also automatically power off after a period of inactivity to save battery.

## MAINTENANCE

---

- **Cleaning:** Use a soft, dry cloth to wipe the surface of the controller. Do not use harsh chemicals or abrasive cleaners.
- **Storage:** Store the controller in a cool, dry place away from direct sunlight and extreme temperatures when not in use for extended periods.
- **Battery Care:** To prolong battery life, avoid fully discharging the controller frequently. Charge it regularly, even if not in constant use.

## TROUBLESHOOTING

---

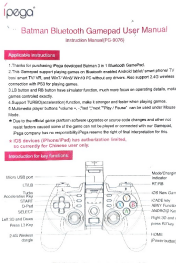

Problem	Possible Cause	Solution
Controller does not power on.	Battery is depleted.	Charge the controller for at least 30 minutes.
Controller does not pair with device.	Incorrect pairing mode; Bluetooth interference; device's Bluetooth is off.	Ensure correct pairing mode (X+HOME for Android, Y+HOME for iOS, A+HOME for PC). Turn off and on device's Bluetooth. Restart both controller and device.

Problem	Possible Cause	Solution
Controller disconnects frequently.	Low battery; too far from device; interference.	Charge the controller. Move closer to the device. Reduce other wireless interference.
Buttons/joysticks are unresponsive.	Software glitch; physical damage.	Restart the controller and device. If problem persists, contact support.
No charging cable included.	Some product batches may not include a cable.	Use any standard Micro-USB charging cable (commonly used for older Android phones).

## SPECIFICATIONS

Feature	Detail
Model	S5
Brand	Gen Game
Connectivity	Wireless (Bluetooth)
Compatibility	Android, iOS (China only), PC (Win7/8/10), PS3
Charging Voltage	DC 5V
Charging Current	420mA
Dimensions (approx.)	20 x 10 x 6 cm (Shipping dimensions)
Weight (approx.)	260 grams (Shipping weight)
ASIN	B07P6NNK95



	<p><a href="#">iPega Batman Bluetooth Gamepad User Manual PG-9076</a></p> <p>Comprehensive user manual for the iPega PG-9076 Batman Bluetooth Gamepad, detailing setup, usage for Android, PC, PS3, and multimedia functions, including connection guides and troubleshooting.</p>
	<p><a href="#">iPega PG-9217 Retractable Gamepad User Manual</a></p> <p>User manual for the Ipega PG-9217 Retractable Gamepad, detailing its features, connection modes (Android Standard, Direct Play for Android and iOS, Wired), charging, and troubleshooting.</p>



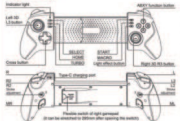
## ipega Wireless Stretching Gamepad

Product Manual (PG-9122)

### Product Overview

- 1. The gamepad is designed for use with the following operating systems:
  - Android (Android 4.0 or higher)
  - iOS (iOS 9.0 or higher)
  - PC (Windows 7 or higher)
  - PS4 (PS4 system software 4.0 or higher)
  - PS3 (PS3 system software 3.55 or higher)
  - Switch (Switch system software 1.0.0 or higher)

### Features



### Connectable Platforms

- 1. Android: Connect the gamepad to your Android phone or tablet via Bluetooth or USB-C.
- 2. iOS: Connect the gamepad to your iPhone or iPad via Bluetooth.
- 3. PC: Connect the gamepad to your PC via USB-C or Bluetooth.
- 4. PS4/PS3: Connect the gamepad to your PS4 or PS3 console via USB-C or Bluetooth.
- 5. Switch: Connect the gamepad to your Switch console via Bluetooth.

### Advanced Functions

- 1. Turbo Mode: Press and hold the Turbo button to activate Turbo Mode, which allows you to press the action buttons repeatedly without needing to press them again.
- 2. Macro Mode: Press and hold the Macro button to activate Macro Mode, which allows you to record and execute a series of button presses.

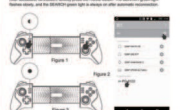


### Android Direct Play Feature Mapping Function

- 1. Enter the website: [www.ipega.com](http://www.ipega.com) for the Android gamepad.

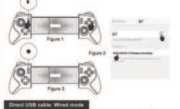
### Android Gamepad Mapping Function

- 1. Press the Android gamepad mapping function button to enter the mapping function menu.



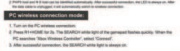
### iOS Gamepad Mapping Function

- 1. Press the iOS gamepad mapping function button to enter the mapping function menu.



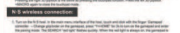
### PS4/PS3 Gamepad Mapping Function

- 1. Press the PS4/PS3 gamepad mapping function button to enter the mapping function menu.



### Switch Gamepad Mapping Function

- 1. Press the Switch gamepad mapping function button to enter the mapping function menu.



### Specifications

- 1. Dimensions: 150mm (L) x 65mm (W) x 25mm (H)
- 2. Weight: 150g
- 3. Battery: 1000mAh
- 4. Charging Time: 2 hours
- 5. Operating Time: 10 hours
- 6. Range: 10m
- 7. Compatibility: Android 4.0+, iOS 9.0+, PC (Windows 7+), PS4 (4.0+), PS3 (3.55+), Switch (1.0.0+)

### Package Contents

- 1. ipega PG-9122 Wireless Stretching Gamepad
- 2. USB-C to USB-A Cable
- 3. USB-C to USB-C Cable
- 4. User Manual

### Warranty

- 1. The gamepad is covered by a 1-year warranty.

### Notes

- 1. Please read the user manual carefully before using the gamepad.

### Index

- 1. Introduction
- 2. Features
- 3. Connectable Platforms
- 4. Advanced Functions
- 5. Android Direct Play Feature Mapping Function
- 6. Android Gamepad Mapping Function
- 7. iOS Gamepad Mapping Function
- 8. PS4/PS3 Gamepad Mapping Function
- 9. Switch Gamepad Mapping Function
- 10. Specifications
- 11. Package Contents
- 12. Warranty
- 13. Notes

### Appendix

- 1. Troubleshooting

### Product List

- 1. ipega PG-9122 Wireless Stretching Gamepad

### Product List

- 1. ipega PG-9122 Wireless Stretching Gamepad

### Product List

- 1. ipega PG-9122 Wireless Stretching Gamepad

### Product List

- 1. ipega PG-9122 Wireless Stretching Gamepad

### Product List

- 1. ipega PG-9122 Wireless Stretching Gamepad

### Product List

- 1. ipega PG-9122 Wireless Stretching Gamepad

### Product List

- 1. ipega PG-9122 Wireless Stretching Gamepad

### Product List

- 1. ipega PG-9122 Wireless Stretching Gamepad

### Product List

- 1. ipega PG-9122 Wireless Stretching Gamepad

### Product List

- 1. ipega PG-9122 Wireless Stretching Gamepad

### Product List

- 1. ipega PG-9122 Wireless Stretching Gamepad

### Product List

- 1. ipega PG-9122 Wireless Stretching Gamepad

### Product List

- 1. ipega PG-9122 Wireless Stretching Gamepad

### Product List

- 1. ipega PG-9122 Wireless Stretching Gamepad

### Product List

- 1. ipega PG-9122 Wireless Stretching Gamepad

### Product List

- 1. ipega PG-9122 Wireless Stretching Gamepad

### Product List

- 1. ipega PG-9122 Wireless Stretching Gamepad

### Product List

- 1. ipega PG-9122 Wireless Stretching Gamepad

### Product List

- 1. ipega PG-9122 Wireless Stretching Gamepad

### Product List

- 1. ipega PG-9122 Wireless Stretching Gamepad

### Product List

- 1. ipega PG-9122 Wireless Stretching Gamepad

## [ipega PG-9122 Wireless Stretching Gamepad - Product Manual](#)

Comprehensive user guide for the ipega PG-9122 Wireless Stretching Gamepad. Learn about its features, connection methods for Android, iOS, PC, PS4/PS3, and Switch, advanced functions like TURBO and MACRO, and troubleshooting.



## [EVOFOX DRE Universal Wireless Gamepad Quick Start Guide](#)

A quick start guide for the EVOFOX DRE Universal Wireless Gamepad, covering setup, features, and troubleshooting for various platforms including PC, Android, iOS, PS4, PS3, and Switch.





[xbuyna D11 BSP-D11 Wireless Game Controller User Manual](#)

User manual for the xbuyna D11 BSP-D11 wireless game controller, detailing setup, features, and operation for Nintendo Switch, Android, iOS, PS3, PS4, and XBOX platforms.