

## Dino-Lite AF3113T

# Dino-Lite USB Digital Microscope AF3113T Instruction Manual

Model: AF3113T

## 1. PRODUCT OVERVIEW

The Dino-Lite USB Digital Microscope AF3113T is a versatile imaging solution designed for detailed inspection and analysis. It offers true optical magnification and high-resolution imaging, making it suitable for various applications across industrial, scientific, medical, educational, and hobbyist needs.

- **Magnification:** 20x - 50x, 200x True Optical Magnification
- **Image Resolution:** 640 x 480 (0.3MP)
- **Video Frame Rate:** 30 FPS
- **Connectivity:** USB for easy setup and operation
- **Compatibility:** Windows and Mac operating systems
- **Features:** MicroTouch for image capture, measurement capabilities, adjustable LED lighting

This microscope provides a balanced field of view for typical inspection and viewing requirements, offering robust tools for capturing, annotating, and analyzing images.



Figure 1: Key features of the Dino-Lite AF3113T, including magnification, USB connectivity, software compatibility, and measurement functions.

## 2. SETUP

### 2.1 What's in the Box

- Dino-Lite USB Digital Microscope AF3113T
- Carry Pouch

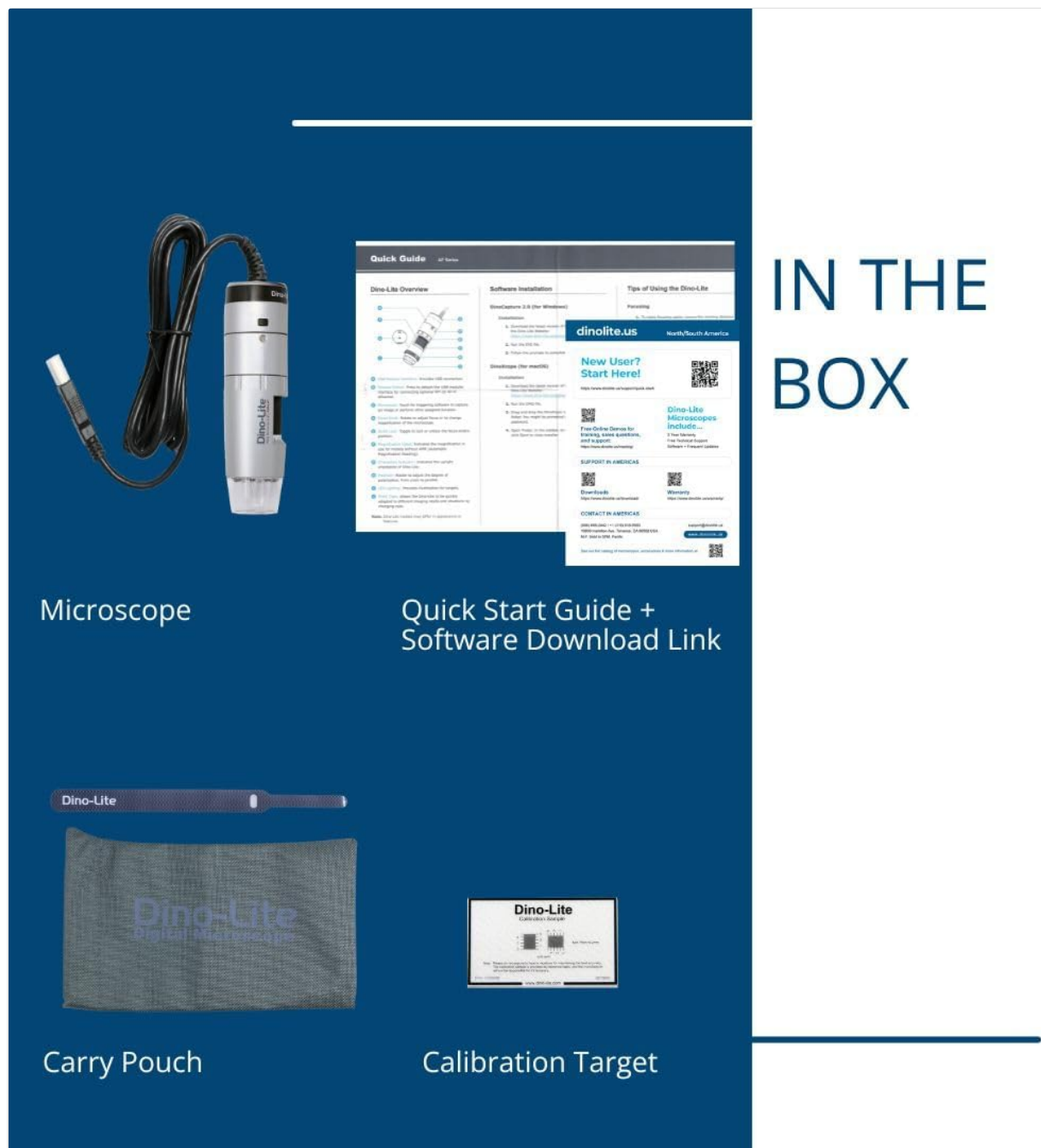


Figure 2: The Dino-Lite AF3113T package includes the microscope unit and a protective carry pouch.

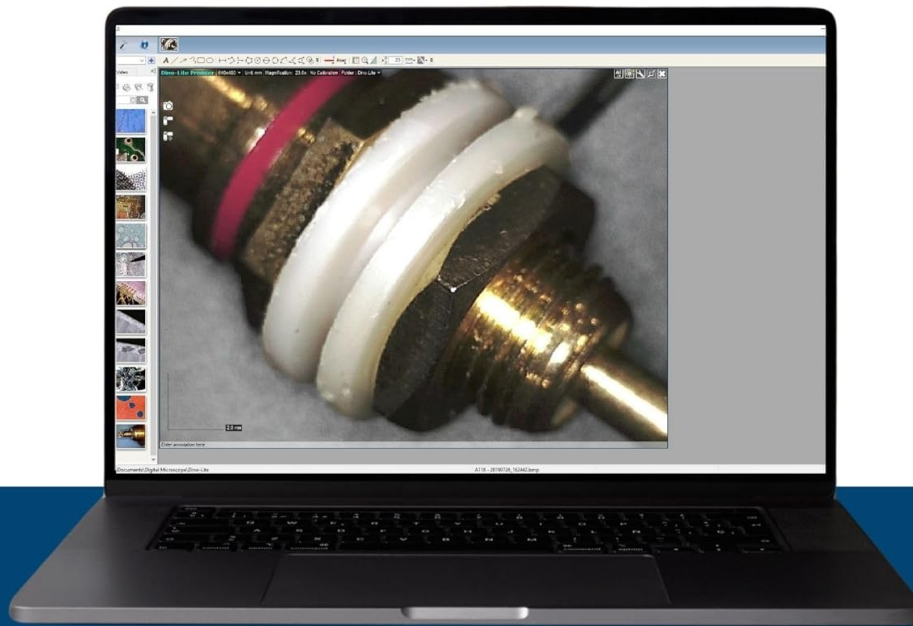
## 2.2 Software Installation

The Dino-Lite AF3113T requires software for full functionality. Install the appropriate software for your operating system:

- **For Windows:** Install DinoCapture software.
- **For Mac:** Install DinoXcope software.

These applications provide tools for capturing, annotating, and analyzing images. Refer to the included Quick Start Guide for download links and detailed installation instructions.

# Software Included



DinoCapture (for Windows OS) and DinoXcope (for Mac OS) offer powerful tools to capture, record, annotate, measure, and more—unlocking the full potential of your Dino-Lite Digital USB microscope.

Figure 3: The DinoCapture software interface displayed on a laptop, showing a magnified image.

## 2.3 Connecting the Microscope

Connect the Dino-Lite AF3113T to your computer via the provided USB cable. The microscope is designed for plug-and-play operation once the software is installed.

For stable viewing or precise movement, the microscope can be paired with a compatible stand (sold separately). The microscope can be used handheld or mounted on a stand.

# STANDARD WORKING DISTANCE

**Standard Working Distance** models can be used as a handheld, or paired with a stand (Sold Separately) for more precise movement.

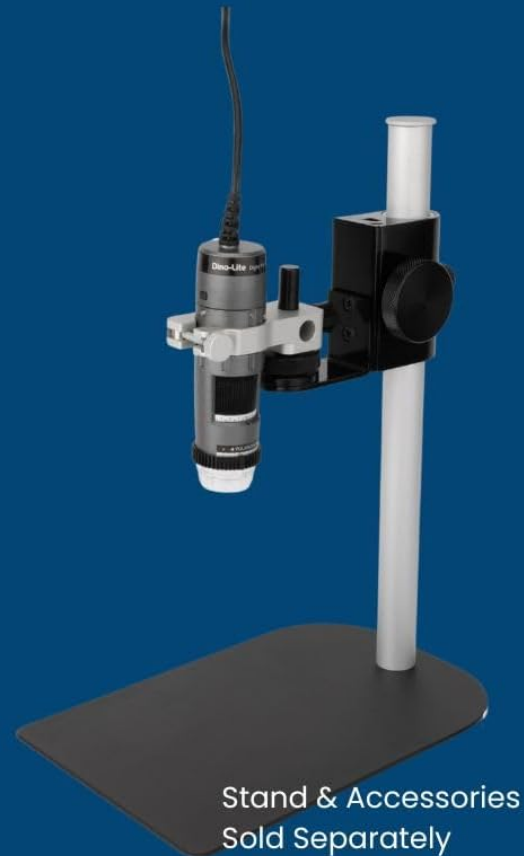
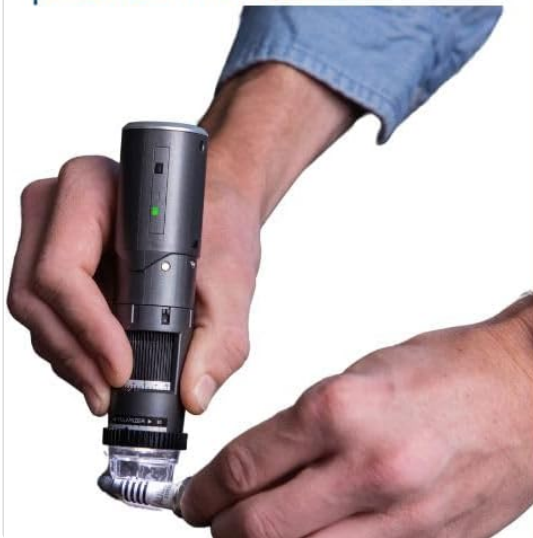


Figure 4: The microscope can be used handheld for flexibility or with a stand for stability and precise positioning.

## 3. OPERATING INSTRUCTIONS

### 3.1 Powering On and Off

The microscope powers on automatically when connected to a powered USB port and the software is launched. To power off, simply disconnect the USB cable or close the software application.

### 3.2 Adjusting Magnification and Focus

The AF3113T features variable magnification from 20x-50x and 200x. To adjust the magnification, rotate the barrel of the microscope. For fine-tuning the focus, use the scroll wheel located on the microscope body.



Figure 5: The magnification dial on the microscope allows for precise adjustment of optical zoom levels.

### 3.3 LED Lighting Control

The microscope is equipped with 8 white LEDs for illumination. The brightness of these LEDs can be controlled via the software interface (DinoCapture/DinoXcope) to optimize lighting for your subject.

### 3.4 Image Capture and Measurement

Use the **MicroTouch** feature on the microscope to easily capture still images. Simply tap the MicroTouch sensor to take a picture. The included software also provides advanced measurement features, supporting units like inches, millimeters, and micrometers for accurate analysis.





Figure 6: The Dino-Lite microscope in use, demonstrating its ability to inspect small objects with integrated lighting.

## 4. MAINTENANCE

- Keep the microscope clean by gently wiping the lens and body with a soft, lint-free cloth.
- Avoid exposing the device to extreme temperatures, humidity, or direct sunlight.
- Store the microscope in its carry pouch when not in use to protect it from dust and damage.

## 5. TROUBLESHOOTING

- **Image not appearing:** Ensure the USB cable is securely connected to both the microscope and the computer. Verify that the DinoCapture/DinoXcope software is running and the correct device is selected.
- **Poor image quality:** Adjust the magnification and focus wheel. Ensure adequate lighting using the built-in LEDs. Clean the lens if necessary.
- **Software not recognizing device:** Reinstall the DinoCapture/DinoXcope software. Check your computer's device manager for proper driver installation. Try a different USB port.
- **LEDs not working:** Ensure the software is running and check the LED control settings within the application.

## 6. SPECIFICATIONS



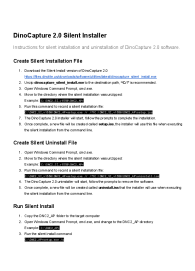
Feature	Specification
---------	---------------

Product Dimensions	1.3 x 1.3 x 4.49 inches
Item Weight	10.5 ounces (0.3 Kilograms)
Item Model Number	AF3113T
Manufacturer	Dino-Lite
Light Source Type	LED
Material	Plastic
Magnification Maximum	220 x
Voltage	5 Volts
Compatible Devices	Personal Computer (Windows, Mac)
Objective Lens Description	Achromatic

7. WARRANTY AND SUPPORT

For warranty information or technical support, please refer to the documentation included with your product or visit the official Dino-Lite website. You may also contact the manufacturer directly for assistance.

Related Documents - AF3113T

	<p><a href="#">Dino-Lite WF-20 CONNECT Instruction Manual for Digital Microscope</a></p> <p>User guide for the Dino-Lite WF-20 CONNECT, detailing setup, operation, app usage for iOS and Android, battery information, and technical specifications for this digital microscope Wi-Fi streamer.</p>
	<p><a href="#">DinoCapture User Manual - AnMo Electronics Dino-Lite Digital Microscope Guide</a></p> <p>Comprehensive user manual for DinoCapture software, designed for use with Dino-Lite digital microscopes. Learn about installation, software features, image and video capture, measurement tools, and calibration.</p>
	<p><a href="#">DinoCapture 2.0 Silent Installer Guide</a></p> <p>Comprehensive guide detailing the process for silent installation and uninstallation of DinoCapture 2.0 software using command-line methods.</p>



<div><div>Model Name:AM7515MTFP-APL</div><div>Model Class:5MP</div><div>Product Code:AM7515MTFP</div></div> <div><div><b>Short Description</b></div><div>Designed with the Aim Point Laser (APL), the AM7515MTFP uses the technology of flexible LED control to regulate the intensity. The AM7515MTFP is a 5MP Extra Long Working Distance (ELWD) digital microscope equipped with 45-70x magnification range. Having APL, FLC, and a useful feature, the microscope provides clear images up to 10x magnification at 100mm working distance.</div></div> <div><div><b>Key Features</b></div><div>Designed with the Aim Point Laser (APL), the AM7515MTFP uses the technology of flexible LED control to regulate the intensity. The AM7515MTFP is a 5MP Extra Long Working Distance (ELWD) digital microscope equipped with 45-70x magnification range. Having APL, FLC, and a useful feature, the microscope provides clear images up to 10x magnification at 100mm working distance.</div></div> <div><div><b>Key Features</b></div><div>Designed with the Aim Point Laser (APL), the AM7515MTFP uses the technology of flexible LED control to regulate the intensity. The AM7515MTFP is a 5MP Extra Long Working Distance (ELWD) digital microscope equipped with 45-70x magnification range. Having APL, FLC, and a useful feature, the microscope provides clear images up to 10x magnification at 100mm working distance.</div></div>	<p><a href="#">Dino-Lite AM7515MTFP-APL 5MP ELWD Digital Microscope with Aim Point Laser</a></p> <p>Explore the Dino-Lite AM7515MTFP-APL, a 5MP Extra Long Working Distance (ELWD) digital microscope featuring a 45-70x magnification range, Aim Point Laser (APL), and Flexible LED Control (FLC) for detailed inspection and measurement.</p>
<div><div>Model Name:AM5216ZTL</div><div>Model Class:5MP</div><div>Product Code:AM5216ZTL</div></div> <div><div><b>Short Description</b></div><div>Designed with the Aim Point Laser (APL), the AM5216ZTL uses the technology of flexible LED control to regulate the intensity. The AM5216ZTL is a 5MP Extra Long Working Distance (ELWD) digital microscope equipped with 10-140x magnification range. Having APL, FLC, and a useful feature, the microscope provides clear images up to 10x magnification at 100mm working distance.</div></div> <div><div><b>Key Features</b></div><div>Designed with the Aim Point Laser (APL), the AM5216ZTL uses the technology of flexible LED control to regulate the intensity. The AM5216ZTL is a 5MP Extra Long Working Distance (ELWD) digital microscope equipped with 10-140x magnification range. Having APL, FLC, and a useful feature, the microscope provides clear images up to 10x magnification at 100mm working distance.</div></div> <div><div><b>Key Features</b></div><div>Designed with the Aim Point Laser (APL), the AM5216ZTL uses the technology of flexible LED control to regulate the intensity. The AM5216ZTL is a 5MP Extra Long Working Distance (ELWD) digital microscope equipped with 10-140x magnification range. Having APL, FLC, and a useful feature, the microscope provides clear images up to 10x magnification at 100mm working distance.</div></div>	<p><a href="#">Dino-Lite AM5216ZTL Digital Microscope Specifications</a></p> <p>Detailed specifications and features of the Dino-Lite AM5216ZTL digital microscope, including its VGA connectivity, 10-140x magnification, long working distance, and Microtouch sensor for image capture and LED control.</p>
<div><div>Model Name:AF7115MZTW - Edge</div><div>Model Class:5MP</div><div>Product Code:AF7115MZTW - Edge</div></div> <div><div><b>Short Description</b></div><div>Designed with the Aim Point Laser (APL), the AF7115MZTW - Edge uses the technology of flexible LED control to regulate the intensity. The AF7115MZTW - Edge is a 5MP Extra Long Working Distance (ELWD) digital microscope equipped with 10-140x magnification range. Having APL, FLC, and a useful feature, the microscope provides clear images up to 10x magnification at 100mm working distance.</div></div> <div><div><b>Key Features</b></div><div>Designed with the Aim Point Laser (APL), the AF7115MZTW - Edge uses the technology of flexible LED control to regulate the intensity. The AF7115MZTW - Edge is a 5MP Extra Long Working Distance (ELWD) digital microscope equipped with 10-140x magnification range. Having APL, FLC, and a useful feature, the microscope provides clear images up to 10x magnification at 100mm working distance.</div></div> <div><div><b>Key Features</b></div><div>Designed with the Aim Point Laser (APL), the AF7115MZTW - Edge uses the technology of flexible LED control to regulate the intensity. The AF7115MZTW - Edge is a 5MP Extra Long Working Distance (ELWD) digital microscope equipped with 10-140x magnification range. Having APL, FLC, and a useful feature, the microscope provides clear images up to 10x magnification at 100mm working distance.</div></div>	<p><a href="#">Dino-Lite AF7115MZTW - Edge 5MP Digital Microscope</a></p> <p>Discover the Dino-Lite AF7115MZTW - Edge, a high-resolution 5MP digital microscope featuring Flexible LED Control (FLC), an adjustable polarizer, and macro zoom optics for detailed imaging.</p>