

[Manuals.plus](#) /

> [XUNATA](#) /

> XUNATA 3W LED Square Recessed Lighting Instruction Manual

## XUNATA LED036110V-WH-3W

# XUNATA 3W LED Square Recessed Lighting Instruction Manual

Model: LED036110V-WH-3W

## INTRODUCTION

---

This manual provides detailed instructions for the installation, operation, and maintenance of your XUNATA 3W LED Square Recessed Lighting fixture. Please read these instructions carefully before installation and retain them for future reference.

## SAFETY INFORMATION

---

- Always turn off the main power supply before attempting any electrical work or installation.
- Installation should be performed by a qualified electrician or a person with sufficient electrical knowledge to ensure safety and compliance with local electrical codes.
- Do not modify the fixture or its components. Unauthorized modifications may lead to electric shock, fire, or product damage.
- Ensure the voltage supply matches the fixture's requirements (AC 110V/50-60 Hz).
- Keep the fixture away from flammable materials.
- Do not look directly into the LED light source when it is illuminated, as this may cause eye strain.

## PRODUCT FEATURES

---

- **Energy Efficient:** 3W power consumption, providing 270 lumens, an ideal replacement for 20-watt traditional bulbs, saving up to 90% energy.
- **Dimmable Functionality:** Compatible with SCR (silicone-controlled rectifier) dimmers such as LUTRON DVCL-153P, FEIT 72302, and LEVITON TBL03 models for adjustable brightness.
- **High Quality Light:** Features SMD2835 LED light source, offering super bright illumination with no flicker and no dazzling, ensuring comfortable light for the eyes.
- **Durable Construction:** Made with die-cast aviation aluminum for excellent heat dissipation and an intelligent constant current driver for surge protection and fire safety.

- **Long Lifespan:** Designed for over 50,000 hours of operation, significantly reducing the need for frequent replacements.
- **Uniform Light Distribution:** Sideways light emission through a diffuser and guiding plate creates a soft and even light effect.
- **Easy Installation:** Pre-assembled spring clips simplify the installation process. Includes 2 wiring caps for direct connection to 110V power.

## SPECIFICATIONS

Specification	Detail
Brand	XUNATA
Model Number	LED036110V-WH-3W
Wattage	3W
Input Voltage	AC 110V/50-60 Hz
Luminous Flux	270lm
Luminous Efficiency	>70 lm/W
Color Temperature	6500K Daylight White
CRI (Color Rendering Index)	Ra>80
Beam Angle	150 degrees
Dimension	90mm x 10mm (Length x Thickness)
Cut Size	70-80mm (2.75-3.15 inches)
Material	Aluminum + Acrylic
IP Rating	IP22
Certifications	CE, CCC, FCC, ROHS

## INSTALLATION INSTRUCTIONS

Follow these steps for safe and proper installation of your recessed lighting fixture:

1. **Turn off Power:** Before starting, ensure the main power supply to the installation area is turned off at the circuit breaker to prevent electric shock.
2. **Cut Hole:** Using the specified cut size (70-80mm), cut an appropriate hole in the ceiling sheetrock.



Figure 1: Product Dimensions and Cut-Size. The fixture has a 90mm outer dimension and requires a 70-80mm cut-out in the ceiling.

3. **Connect Wiring:** Connect the transformer (LED driver) to the 110V power supply wires. Use the provided wiring caps to ensure secure and insulated connections. Ensure proper polarity (live to live, neutral to neutral).
4. **Insert Fixture:** Pull up the spring clips on the sides of the panel light. Carefully insert the panel into the cut hole in the ceiling.
5. **Secure Fixture:** Once the panel is in the hole, release the spring clips. They will retract and hold the fixture firmly against the ceiling. Adjust the panel to ensure it sits flush and securely.

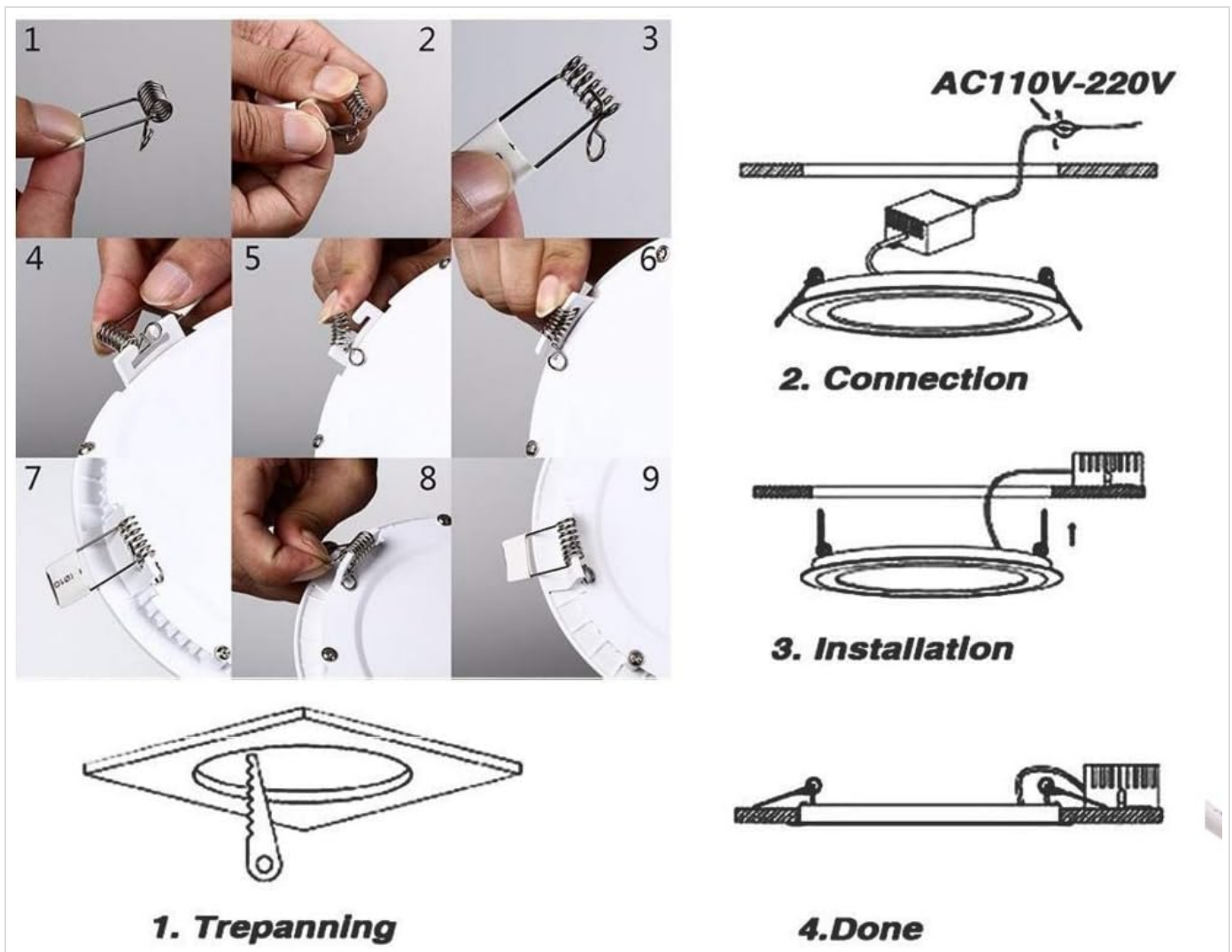


Figure 2: Installation Diagram. This image shows the sequence of steps for installing the recessed light, from preparing the ceiling to final placement.

After installation, restore power and test the light fixture.

## OPERATING INSTRUCTIONS

The XUNATA 3W LED Square Recessed Light operates like a standard lighting fixture. Once installed and connected to power:

- **Turning On/Off:** Use your wall switch to turn the light fixture on or off.
- **Dimming:** If connected to a compatible SCR dimmer switch, you can adjust the brightness level of the light by operating the dimmer control.



Figure 3: Recessed Light in a Bathroom Setting. The light provides clear, daylight white illumination.

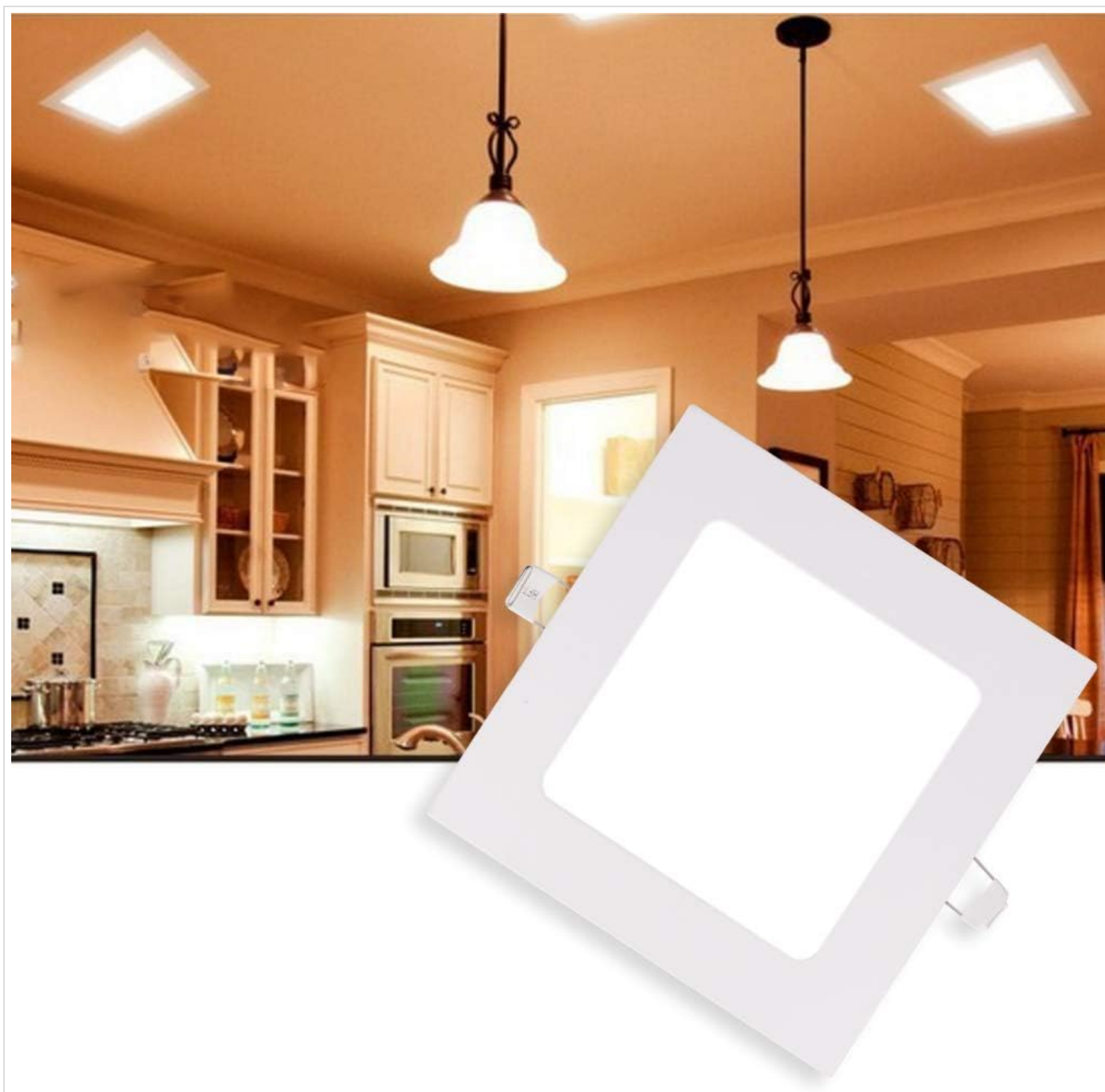


Figure 4: Recessed Light in a Kitchen Setting. The light provides effective illumination for kitchen tasks.

## MAINTENANCE

---

The XUNATA LED Recessed Light is designed for minimal maintenance. To ensure optimal performance and longevity:

- **Cleaning:** Periodically wipe the surface of the light fixture with a soft, dry cloth. Do not use abrasive cleaners or solvents, as they may damage the finish. Ensure power is off before cleaning.
- **Inspection:** Occasionally check for any loose connections or visible damage. If any issues are found, turn off power immediately and consult a qualified electrician.
- **No User-Serviceable Parts:** The LED light source and driver are integrated and not designed for user replacement. Do not attempt to open or repair the unit.

## TROUBLESHOOTING

---

If you encounter issues with your XUNATA LED Recessed Light, refer to the following common problems and solutions:

Problem	Possible Cause	Solution
Light does not turn on	No power supply; Loose wiring; Faulty switch; Faulty fixture	Check circuit breaker; Verify all wire connections are secure; Test the switch; If all else fails, contact support.
Light flickers or dims unexpectedly	Incompatible dimmer; Loose wiring; Voltage fluctuations	Ensure dimmer is compatible (SCR type); Check wiring connections; Consult an electrician for voltage issues.
Light is not as bright as expected	Dimmer set too low; Incorrect wattage for room size	Adjust dimmer to maximum brightness; Refer to recommended illumination guidelines in product description for appropriate wattage/quantity.

If the problem persists after trying these solutions, please contact XUNATA customer support.

## WARRANTY AND SUPPORT

---

XUNATA stands behind the quality of its products. This product comes with a manufacturer-and-seller-combination warranty.

If you are not satisfied with your purchase for any reason, you may be eligible for a 100% money-back guarantee. Please refer to your purchase documentation or contact your retailer for specific warranty terms and conditions.

For technical support, troubleshooting assistance, or warranty claims, please contact XUNATA customer service through the retailer where the product was purchased or visit the official XUNATA store online.