



Manuals.plus /

› WANLIAN /

› WANLIAN Steering Wheel to Pedal Anti-Theft Lock User Manual

WANLIAN WANLIAN-01

WANLIAN Steering Wheel to Pedal Anti-Theft Lock

MODEL: WANLIAN-01

1. Introduction

Thank you for choosing the WANLIAN Steering Wheel to Pedal Anti-Theft Lock. This robust security device is designed to provide an additional layer of protection for your vehicle by physically immobilizing the steering wheel and connecting it to either the brake or clutch pedal. Its durable alloy steel construction and customizable combination lock offer reliable deterrence against theft. Please read this manual carefully before initial use to ensure proper setup and operation.

2. Safety Information

- Always ensure the vehicle is parked on a level surface and the parking brake is engaged before installing or removing the lock.
- Do not attempt to drive the vehicle with the lock installed. This can cause severe damage to the vehicle and pose a significant safety hazard.
- Keep the combination code confidential and store it in a secure location, separate from the vehicle.
- Ensure the lock is securely fastened and does not interfere with any vehicle controls (e.g., horn, turn signals, wipers) once installed.
- Keep out of reach of children.

3. Product Overview

The WANLIAN Steering Wheel to Pedal Anti-Theft Lock is constructed from high-strength alloy steel with a protective plastic coating. It features a 5-digit resettable combination lock mechanism.



Figure 3.1: Full view of the WANLIAN Steering Wheel to Pedal Anti-Theft Lock.



Figure 3.2: The anti-theft lock shown with the included scorpion and reflective stickers.

What's in the Box:

- 1 x WANLIAN Steering Wheel to Pedal Anti-Theft Lock
- 1 x Scorpion Sticker
- 2 x Reflective Stickers

4. Setup: Setting Your Combination Code

The lock comes with a factory default combination of 00000. You can easily set your personal 5-digit combination code. Follow these steps carefully:

Password Setting

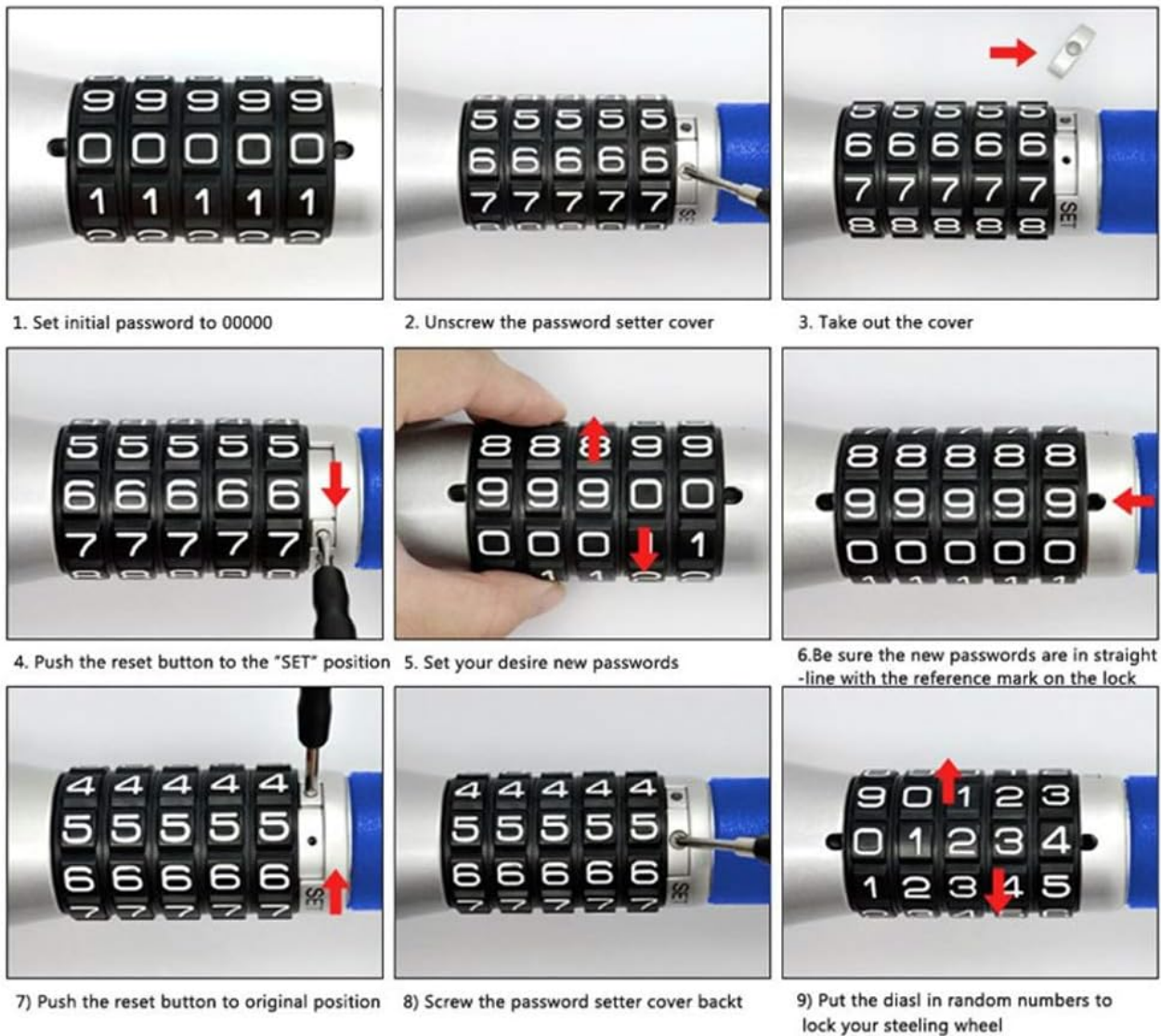


Figure 4.1: Visual guide for setting the combination password.

1. Set the initial password to **00000**. Ensure all five digits are aligned correctly.
2. Locate the small screw on the side of the combination dial housing, labeled "SET". Unscrew the password setter cover using a small screwdriver.
3. Carefully take out the cover.
4. Push the reset button (a small pin or lever) located inside the housing to the "SET" position.
5. While holding the reset button in the "SET" position, set your desired new 5-digit password by rotating the dials.
6. Be sure the new password digits are straight and aligned with the reference mark on the lock.
7. Release the reset button, allowing it to return to its original position.
8. Screw the password setter cover back into place securely.
9. Scramble the dials to lock the steering wheel. Your new combination is now set.

Important: Remember your new combination. There is no master key or override if you forget it.

5. Operating Instructions: Installing the Lock

To secure your vehicle, follow these steps:



Figure 5.1: The anti-theft lock installed in a vehicle.

1. Ensure your vehicle is turned off and the steering wheel is in a locked position (if applicable).
2. Enter your 5-digit combination code to unlock the device. The two hooks will extend or retract, allowing the lock to be adjusted.
3. Place one hook securely around the steering wheel. Position it so that it does not interfere with the airbag or other steering wheel components.
4. Extend the other end of the lock and place the second hook around the brake or clutch pedal. Ensure it is firmly attached and cannot easily slip off.
5. Adjust the length of the lock by pushing the two ends together until it is taut and provides maximum resistance.
6. Scramble the combination dials to lock the device. The lock is now engaged and the steering wheel is immobilized.
7. To remove, enter your combination code, release the tension, and detach the hooks from the steering wheel and pedal.

6. Maintenance

- Clean the lock periodically with a soft, damp cloth. Avoid using abrasive cleaners or solvents that could

damage the finish or internal mechanisms.

- Ensure the combination dials move freely. If they become stiff, a small amount of silicone-based lubricant can be applied, but avoid oil-based lubricants which can attract dust.
- Store the lock in a dry place when not in use to prevent rust or corrosion.
- Regularly inspect the lock for any signs of wear, damage, or deformation. Do not use if damaged.

7. Troubleshooting

- **Difficulty setting the combination:** Ensure the dials are perfectly aligned with the previous code (00000 initially) before attempting to push the reset button. Make sure the reset button is fully engaged in the "SET" position while setting the new code, and fully released before scrambling the dials. Refer to Section 4 and Figure 4.1 for detailed steps.
- **Lock feels stiff or gets stuck:** This can occur due to dirt or lack of lubrication. Clean the dials and the extending rod thoroughly. Apply a small amount of silicone spray lubricant to the moving parts and work the mechanism to distribute it.
- **Lock does not fit my vehicle:** While designed for universal fit, some vehicles, particularly larger vans or trucks, may have specific pedal or steering wheel configurations that limit the lock's reach. Check the product dimensions (see Section 8) against your vehicle's interior space. The lock has an adjustable length from approximately 530mm (closed) to 810mm (fully extended).
- **Forgot combination:** Unfortunately, there is no way to reset the combination without knowing the current code. Please ensure you store your combination in a safe and memorable place.

8. Specifications



Figure 8.1: Product dimensions (closed and extended).

Feature	Detail
Brand	WANLIAN
Model Number	WANLIAN-01
Material	Alloy Steel, Plastic Coated
Color	Red
Locking Type	Combination Lock (5-digit)
Product Dimensions (L x W x H)	55.88 x 14.48 x 6.35 cm (22 x 5.7 x 2.5 inches)
Adjustable Length (Extended)	Up to 81 cm (31.9 inches)
Item Weight	1.83 Kilograms (4.03 lbs)
Special Features	Passcode Unlock

9. Warranty and Support

Specific warranty information for this product is not provided in the available data. For any product-related inquiries, technical support, or assistance with your WANLIAN Steering Wheel to Pedal Anti-Theft Lock, please contact the seller or manufacturer directly through the platform where you purchased the product. Ensure you have your purchase details and model number (WANLIAN-01) ready when contacting support.

