

ASTRO Gaming A40 TR + MixAmp Pro TR (939-001660)

ASTRO Gaming A40 TR Wired Headset + MixAmp Pro TR User Manual

Model: A40 TR + MixAmp Pro TR (939-001660)

Brand: ASTRO Gaming

INTRODUCTION

The ASTRO A40 TR Headset + MixAmp Pro TR is designed to provide superior audio fidelity, comfort, and durability for gaming enthusiasts and professionals. This manual provides essential information for setting up, operating, maintaining, and troubleshooting your device.

WHAT'S IN THE BOX

- ASTRO A40 TR Wired Headset
- MixAmp Pro TR
- Detachable Microphone
- 3.5mm Audio Cable
- Optical Cable
- USB Power Cable

SETUP GUIDE

Follow these steps to set up your ASTRO Gaming A40 TR Headset and MixAmp Pro TR for optimal performance.

Connecting the Headset and MixAmp

Connect the A40 TR Headset to the MixAmp Pro TR using the provided 3.5mm audio cable. Ensure the microphone is securely attached to the headset.



Image: The ASTRO Gaming A40 TR Headset connected to the MixAmp Pro TR, ready for use.

Connecting to Your Platform

The MixAmp Pro TR offers versatile connectivity for various platforms:

- **PC/Mac:** Connect the MixAmp Pro TR to your computer using the USB cable. Select 'PC' mode on the MixAmp.
- **PlayStation 4:** Connect the MixAmp Pro TR to your PS4 via USB for power and voice chat. For game audio, connect the optical cable from the MixAmp to the PS4's optical port.
- **PlayStation 5:** Connect the MixAmp Pro TR to your PS5 via USB. For game audio and full functionality, an HDMI Audio Extractor (sold separately) with an optical output is required, as the PS5 does not have a dedicated optical port.



Image: The ASTRO Gaming A40 TR Headset and MixAmp Pro TR set up next to a PlayStation 5 console, demonstrating connectivity.

Setup Video

Watch this official video for a visual guide on setting up your ASTRO Gaming A40 TR Headset and MixAmp Pro TR.

Video: An official overview of the ASTRO Gaming A40 TR Wired Headset and MixAmp Pro, detailing its components and initial setup.

OPERATING INSTRUCTIONS

Headset Features

- **Tuned with ASTRO Audio V2:** Experience professional-grade audio tuned specifically for gaming.



Image: A close-up view highlighting the ASTRO Audio V2 tuning of the headset's earcups.

- **Superior Fit & Finish:** Designed for comfort during long gaming sessions with lightweight, durable materials and breathable ear cushions.



SUPERIOR FIT & FINISH



Image: A top-down view of the headset, emphasizing its comfortable and durable design.

- **Mod Kit Ready:** Customize your headset with Mod Kits (sold separately) for noise isolation, including sealed Speaker Tags and synthetic leather ear cushions.



MOD KIT READY



Image: An illustration of the various components available in a Mod Kit for the ASTRO A40 TR headset.

MixAmp Pro TR Controls

- **Master Volume Dial:** Adjust the overall volume of your audio.
- **Game:Voice Balance Dial:** Easily balance game audio and voice chat levels to your preference.



Image: A detailed view of the MixAmp Pro TR's Game:Voice Balance dial, allowing for precise audio mixing.

- **EQ Presets:** Cycle through four customizable equalizer presets for different audio experiences (e.g., Natural Bass, Balanced, Tournament).
- **Dolby Audio:** Toggle Dolby Digital Surround Sound processing for immersive audio or switch to normal stereo mode.

ASTRO Command Center Software

The free ASTRO Command Center software provides enhanced control over your audio and voice communication settings. You can customize EQ presets, adjust microphone settings, and manage stream output levels.



USB SOUND CARD FUNCTIONALITY

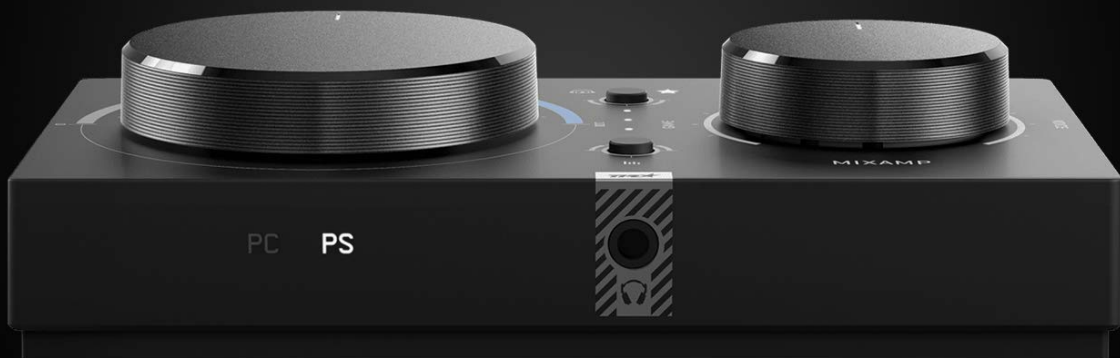


Image: A screenshot of the ASTRO Command Center software, displaying equalizer presets and audio adjustment options.

Operating Video

This official video also demonstrates key operating features of the MixAmp Pro TR, including its various ports and controls.

Video: An official overview of the ASTRO Gaming A40 TR Wired Headset and MixAmp Pro, detailing its components and various operating features.

MAINTENANCE

To ensure the longevity and optimal performance of your headset, follow these maintenance guidelines:

- **Cleaning:** Use a soft, dry cloth to clean the headset and MixAmp. Avoid using harsh chemicals or abrasive materials.
- **Earcup and Headband Care:** Regularly inspect ear cushions and headband padding for wear and tear. Replace Mod Kit components as needed.



MOD KIT READY



Image: The Mod Kit components, including ear cushions and speaker tags, which can be replaced for maintenance or customization.


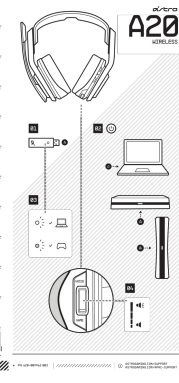


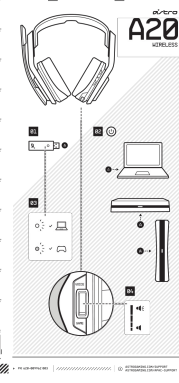
- **Cable Management:** Store cables neatly to prevent tangling and damage.

TROUBLESHOOTING

If you encounter issues with your ASTRO Gaming A40 TR Headset + MixAmp Pro TR, try the following solutions:

- **No Audio/Mic Not Working:**
 - Ensure all cables are securely connected to the headset, MixAmp, and platform.
 - Verify the MixAmp is in the correct mode (PC/PS).
 - Check your platform's audio settings to ensure the MixAmp is selected as the default input/output device.
 - Confirm the microphone is not muted via the inline mute switch or MixAmp controls.
- **Low Volume:**
 - Increase the Master Volume dial on the MixAmp.
 - Adjust the Game:Voice Balance dial to favor game audio if voice chat is too loud.
 - Check volume levels in your platform's settings and in-game audio options.

Feature	Detail
Model Name	A40 TR Headset + MixAmp Pro TR for PS4 & PC
Connectivity Technology	Wired
Compatible Devices	PlayStation 5, PlayStation 4, PC, Mac
Noise Control	Sound Isolation (with Mod Kit)
Frequency Response	20 Hz - 24 kHz
Headphones Jack	3.5 mm Jack
Item Weight	1.47 Pounds (665 Grams)
Material	Plastic
Manufacturer	Logitech

 The image shows the cover of the ASTRO A30 Headset Instruction Guide. It features an orange background with a stylized illustration of a person wearing the headset. The text "A30 HEADSET" is prominently displayed at the top, followed by "INSTRUCTION GUIDE" and the "astro" logo.	<p>ASTRO A30 Headset Instruction Guide</p> <p>This guide provides instructions for setting up and using the ASTRO A30 Headset, including package contents, connecting to audio sources, basic troubleshooting, and warranty information.</p>
 The image is a diagram from the ASTRO Gaming A20 Wireless Headset Setup Guide. It shows the headset connected to various devices: a PC, a PlayStation console, and an Xbox console. The diagram includes labels for the headset, the transmitter, and the connection points on each device.	<p>ASTRO Gaming A20 Wireless Headset Setup Guide</p> <p>A concise guide to setting up the ASTRO Gaming A20 Wireless Headset for PC, PlayStation, and other compatible devices. Learn how to connect the transmitter and adjust audio settings.</p>
 The image is a diagram from the ASTRO A50 Wireless + Base Station Quick Start Guide. It shows the headset connected to a base station, which is then connected to a PC, a Mac, and an Xbox One. The diagram includes labels for the headset, the base station, and the connection points on each device.	<p>ASTRO A50 Wireless + Base Station Quick Start Guide</p> <p>Quick start guide for the ASTRO A50 Wireless Gaming Headset and Base Station, covering setup for PC, Mac, and Xbox One, features, and LED indicators.</p>
 The image shows two pages from the Astro A30 Bluetooth Headset Quick Start Guide. The left page is the cover, featuring the headset and the text "ASTRO A30". The right page is the first page of the guide, showing the headset and the text "ASTRO A30".	<p>Astro A30 Bluetooth Headset Quick Start Guide</p> <p>Quick start guide for the Astro A30 Bluetooth Headset, detailing setup, connection, and controls for mobile and PC/console use.</p>
 The image is a diagram from the ASTRO Gaming A20 Wireless Headset Setup Guide. It shows the headset connected to various devices: a PC, a PlayStation console, and an Xbox console. The diagram includes labels for the headset, the transmitter, and the connection points on each device.	<p>ASTRO Gaming A20 Wireless Headset Setup Guide</p> <p>A concise guide to setting up the ASTRO Gaming A20 Wireless Headset for gaming on various platforms, including PC, PlayStation, and Xbox.</p>