

[Manuals.plus](#) /

> [JEKCA](#) /

> JEKCA Chow Chow 02S-M03 Building Blocks Instruction Manual

## JEKCA ST19CC02-M03

# JEKCA Chow Chow 02S-M03 Building Blocks Instruction Manual

Model: ST19CC02-M03

## INTRODUCTION

This instruction manual provides comprehensive guidance for assembling your JEKCA Chow Chow 02S-M03 building block set. Please read all instructions carefully before beginning assembly to ensure a successful and enjoyable building experience. This set is designed for individuals aged 14 years and above.

## SAFETY INFORMATION

**WARNING: Small parts inside. Not suitable for children under 14 years due to choking hazards. Adult supervision is recommended for younger builders within the recommended age range.**

Always keep small parts away from young children and pets. Dispose of packaging materials responsibly.

## WHAT'S INCLUDED

Your JEKCA Chow Chow 02S-M03 building block set contains the following components:

- Instruction Manual
- Building Bricks (over 2710 pieces)
- Pins
- Pin Driver (Assembly Tool)
- Quick Guide

Please verify that all components are present before starting assembly. If any parts are missing, please contact JEKCA customer support.

## ASSEMBLY INSTRUCTIONS

The JEKCA building system utilizes a patented interlocking brick-through system for sturdy construction. Follow these steps carefully:

## Step 1: Understand the Interlocking System

JEKCA blocks are connected using pins that pass through the bricks, securing them firmly. This method ensures the completed model is robust and less prone to accidental disassembly.

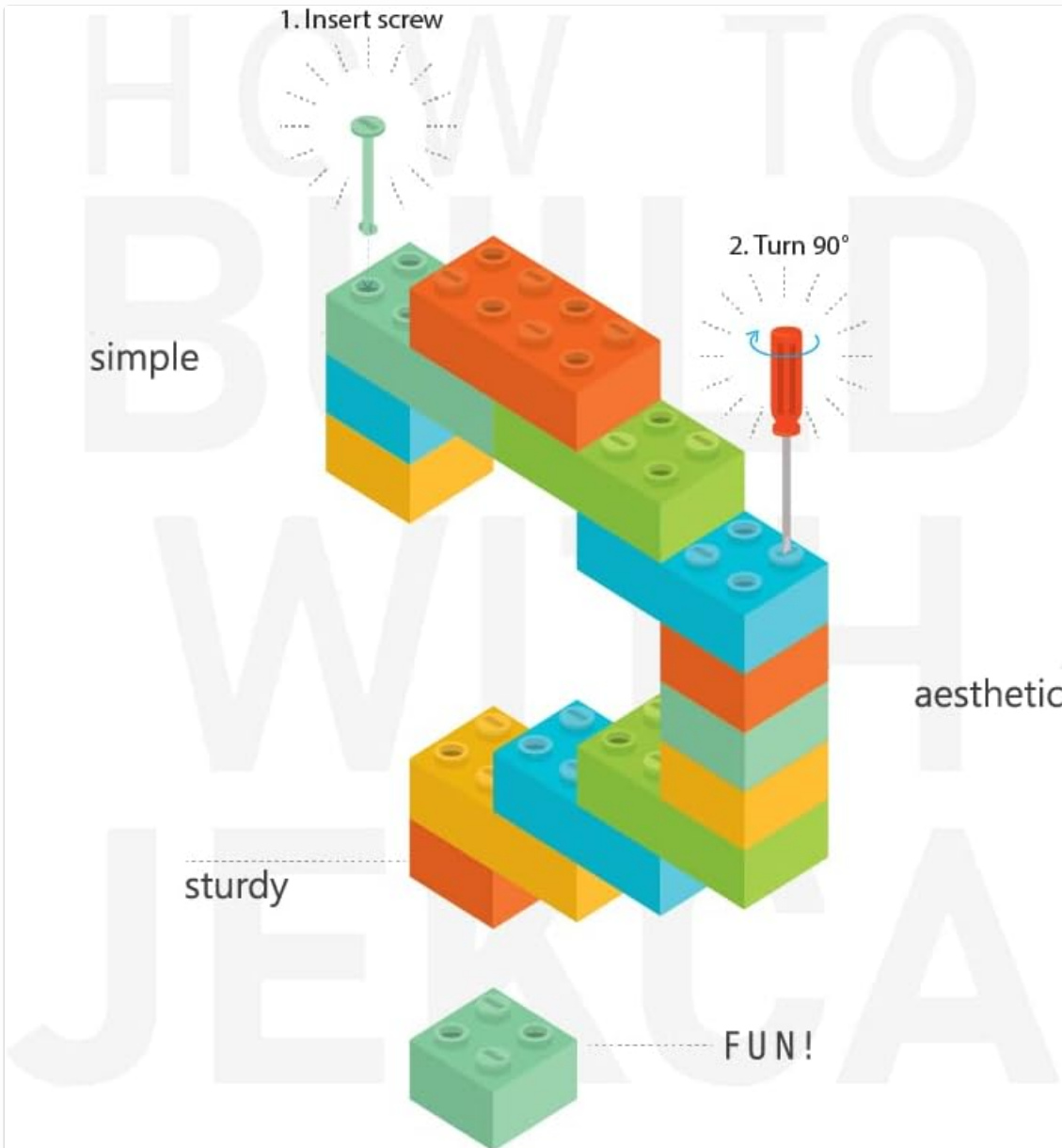


Image: This illustration demonstrates the JEKCA interlocking system. It shows a screw (pin) being inserted into a block, and then turned 90 degrees to secure it, connecting multiple blocks together.

## Step 2: Basic Connection Procedure

Refer to the detailed instruction manual included in your kit for specific model assembly. The general connection steps are as follows:

1. **Align Blocks:** Place the blocks you wish to connect in their designated positions according to the manual.
2. **Insert Pins:** Insert the provided pins through the holes in the top block and into the corresponding holes

of the bottom block.

3. **Secure with Pin Driver:** Use the pin driver tool to turn the pins 90 degrees. This action expands the pin within the blocks, creating a secure, interlocking connection.

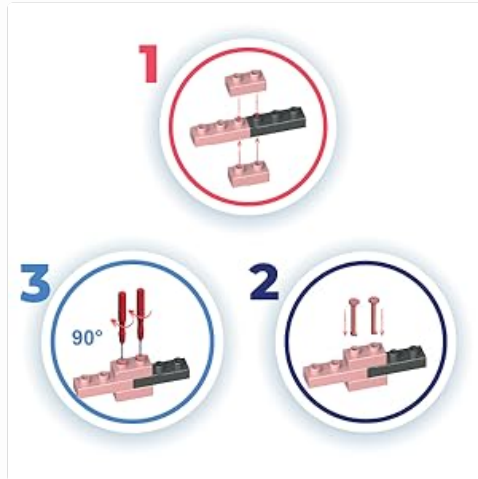


Image: A three-step diagram illustrating the JEKCA block assembly process. Step 1 shows two blocks being aligned. Step 2 shows pins being inserted. Step 3 shows the pins being turned 90 degrees with a tool to secure the connection.

### Step 3: Follow Model-Specific Instructions

Your kit includes a detailed, step-by-step building manual. Follow the diagrams and instructions precisely to construct the Chow Chow model. Pay close attention to the color and shape of the bricks and the orientation of the pins.



Image: A front-side view of the fully assembled JEKCA Chow Chow 02S-M03 building block model, showcasing its black color and intricate block construction.

## MAINTENANCE

To maintain the appearance of your JEKCA model, you may gently dust it with a soft cloth or brush. For deeper cleaning, use a slightly damp cloth with mild soap and water, then wipe dry immediately. Avoid harsh chemicals or abrasive materials, as these can damage the plastic blocks.

## TROUBLESHOOTING

- **Difficulty Connecting Blocks:** Ensure the pins are correctly aligned and fully inserted before turning with the pin driver. Do not force connections.
- **Loose Connections:** If a connection feels loose, ensure the pin has been turned 90 degrees to fully engage the interlocking mechanism.
- **Missing Parts:** If you discover any missing components, please refer to the contact information in the Support section to request replacements.

- **Model Instability:** Double-check all connections in the affected area. Ensure all pins are securely fastened according to the instructions.

## SPECIFICATIONS

Feature	Detail
Model Number	ST19CC02-M03
Product Dimensions	13.54 x 6.65 x 10.67 inches (34.4 x 16.9 x 27.1 cm)
Item Weight	4.4 pounds
Number of Pieces	>2710
Recommended Age	14 years and up
Manufacturer	JEKCA Limited



### Dimension

**Length** : 34.4cm

**Width** : 16.9cm

**Height** : 27.1cm

Image: The JEKCA Chow Chow 02S-M03 model shown with its approximate dimensions: Length 34.4cm, Width 16.9cm, Height 27.1cm.

## WARRANTY AND SUPPORT

For any questions, concerns, or to report missing parts, please contact JEKCA customer support. Refer to the packaging or the official JEKCA website for the most current contact information.

JEKCA products are designed for durability and enjoyment. Please retain your purchase receipt for any warranty claims, if applicable.