

Manuals+

[Q & A](#) | [Deep Search](#) | [Upload](#)

manuals.plus /

- › [Altec Lansing](#) /
- › [Altec Lansing Mini LifeJacket Jolt Bluetooth Speaker User Manual](#)

Altec Lansing Mini LifeJacket Jolt

Altec Lansing Mini LifeJacket Jolt Bluetooth Speaker User Manual

Model: Mini LifeJacket Jolt

[Introduction](#) [Package Contents](#) [Product Overview](#) [Setup](#) [Operation](#) [Durability](#) [Maintenance](#)
[Troubleshooting](#) [Specifications](#) [Warranty & Support](#)

1. INTRODUCTION

This manual provides instructions for the Altec Lansing Mini LifeJacket Jolt Bluetooth Speaker. This portable speaker features Bluetooth connectivity, Qi wireless charging, a built-in USB charging port, and a durable, waterproof design. Please read this manual thoroughly before using the device to ensure proper operation and longevity.



Figure 1: Front view of the Altec Lansing Mini LifeJacket Jolt Bluetooth Speaker.

2. PACKAGE CONTENTS

Verify that all items are present in your package:

- Altec Lansing Mini LifeJacket Jolt Bluetooth Speaker
- Charging Cable (USB-C to USB-A)
- Quick Start Guide (not included in this digital manual)

3. PRODUCT OVERVIEW

Familiarize yourself with the speaker's components and controls.



Figure 2: Top view of the speaker, highlighting control buttons and the Qi wireless charging pad.

3.1. Control Buttons

- **Power Button:** Press and hold to power on/off.
- **Bluetooth Pairing Button:** Initiates Bluetooth pairing mode.
- **Volume Up (+):** Increases volume.
- **Volume Down (-):** Decreases volume.
- **Play/Pause Button:** Plays or pauses audio. Also answers/ends calls.
- **Voice Assistant Button:** Activates your device's voice assistant (Siri, Google Assistant).
- **House Party Pairing Button:** Connects multiple Altec Lansing speakers.

3.2. Ports and Indicators



Figure 3: Side view of the speaker, showing the protected charging port.

- **USB-C Charging Port:** For charging the speaker's internal battery.
- **USB-A Output Port:** For charging external devices.
- **LED Indicator:** Displays power, charging, and Bluetooth status.
- **Qi Wireless Charging Pad:** Located on the top surface for wireless charging compatible devices.

4. SETUP

4.1. Charging the Speaker

Before first use, fully charge the speaker. The speaker provides up to 16 hours of playback on a single charge.



Figure 4: The speaker offers up to 16 hours of play time.

1. Open the protective flap on the side of the speaker to access the USB-C charging port.
2. Connect the provided USB-C cable to the speaker's charging port.
3. Connect the other end of the USB-C cable to a USB power adapter (not included) or a computer's USB port.
4. The LED indicator will show charging status and turn off when fully charged.

4.2. Powering On/Off

- To power on, press and hold the **Power Button** until you hear an audible prompt and the LED indicator illuminates.
- To power off, press and hold the **Power Button** again until you hear an audible prompt and the LED indicator turns off.

4.3. Bluetooth Pairing

The speaker can connect to your device via Bluetooth 4.2, offering a range of up to 100 feet.

1. Ensure the speaker is powered on. The LED indicator will flash, indicating it is in pairing mode.
2. On your smartphone, tablet, or other Bluetooth-enabled device, navigate to the Bluetooth settings.

3. Select "Mini LifeJacket Jolt" from the list of available devices.
4. Once paired, the LED indicator will glow solid, and you will hear a confirmation tone.
5. If pairing fails, turn off the speaker and your device's Bluetooth, then repeat the steps.

5. OPERATING INSTRUCTIONS

5.1. Audio Playback

- **Play/Pause:** Press the **Play/Pause Button** once.
- **Volume Control:** Press the **Volume Up (+)** or **Volume Down (-)** buttons.
- **Skip Track:** Press and hold **Volume Up (+)** for next track, or **Volume Down (-)** for previous track.

5.2. Qi Wireless Charging

The speaker features a Qi wireless charging pad on its top surface to charge compatible devices.



Figure 5: A smartphone being charged wirelessly on the speaker's Qi pad.

1. Ensure the speaker is powered on.
2. Place your Qi-enabled device directly on the charging pad located on the top of the speaker.
3. The device should begin charging automatically. Adjust its position if charging does not start immediately.

5.3. USB Device Charging

Use the built-in USB-A port to charge other devices via a cable.



Figure 6: The speaker's USB-A port can charge external devices.

1. Ensure the speaker is powered on.
2. Open the protective flap on the side of the speaker.
3. Connect your device's USB charging cable to the USB-A output port on the speaker.
4. Your device will begin charging.

5.4. Voice Assistant Integration

Access your smartphone's voice assistant directly through the speaker.



Figure 7: The speaker supports voice assistant integration.

1. Ensure the speaker is paired with your smartphone.
2. Press the **Voice Assistant Button** on the speaker.
3. Speak your command into the speaker's microphone.

5.5. House Party Pairing

Connect multiple Altec Lansing speakers for a synchronized audio experience.



Figure 8: Multiple speakers can be paired for a wider sound experience.

1. Ensure both speakers are powered on and not connected to any Bluetooth device.
2. On the first speaker, press the **House Party Pairing Button**. The LED indicator will flash.
3. On the second speaker, press the **House Party Pairing Button**.
4. The speakers will connect automatically. Once connected, the LED indicators will glow solid.
5. Now, connect your device to one of the paired speakers via Bluetooth. Audio will play through both speakers.

6. DURABILITY FEATURES

The Mini LifeJacket Jolt is designed for rugged use with an IP67 rating, making it waterproof, shockproof, snowproof, and dustproof.



Figure 9: The speaker is designed to withstand water exposure.

- **Waterproof:** Can be submerged in water up to 1 meter for 30 minutes. Ensure all port covers are securely closed before exposure to water.
- **Shockproof:** Designed to withstand drops and impacts.
- **Snowproof:** Operates reliably in snowy conditions.
- **Dustproof:** Protected against dust ingress.

Important: Always ensure the protective flap covering the charging ports is securely closed when using the speaker near water or in dusty environments.

7. MAINTENANCE

- **Cleaning:** Use a soft, damp cloth to clean the speaker. Avoid abrasive cleaners or solvents.
- **Storage:** Store the speaker in a cool, dry place away from direct sunlight and extreme temperatures.
- **Battery Care:** To prolong battery life, avoid fully discharging the battery frequently. Charge the speaker regularly, even if not in use for extended periods.

8. TROUBLESHOOTING

8.1. Speaker Not Powering On or Charging

If your speaker stops working or does not charge, a connection issue or a system freeze might be the cause. This procedure requires careful handling and may void your warranty if not performed correctly. Proceed with caution.

1. **Remove the Rubber Exterior:** Gently pry off the rubberized outer casing. It is designed to snap off at the seams around the speaker mesh.
2. **Access Internal Components:** Using a small flat-head tool, carefully insert it between the speaker mesh and the main body, particularly on the back of the speaker. Slowly work your way around to loosen the mesh.
3. **Locate and Remove Screws:** You will find six small Phillips head screws deep inside the holes. Use a long, thin Phillips screwdriver to remove them. Keep track of these screws.
4. **Separate the Casing:** Gently pull the front and back sections of the speaker apart along the seam that becomes visible after removing the rubber protector.
5. **Inspect Internal Connections:** Inside, you will see the motherboard, buttons, wires, and the cylindrical battery. Locate the battery holder and remove any screw securing it.
6. **Reset Battery Connection:** Carefully disconnect the battery's wiring connector from the motherboard. Ensure you pull the entire plastic insert, not just the wires, to avoid damage.
7. **Reconnect and Test:** Reconnect the battery connector firmly. Press the power button. If you hear the "Welcome to Altec Lansing!" prompt, the issue may be resolved.
8. **Reassemble:** If the speaker functions, carefully re-adjust any wires to ensure they have sufficient slack and are not pinched. Ensure the battery is centered and not clinging to speaker magnets. Re-secure the battery holder, then carefully align and re-screw the casing. Finally, reattach the speaker mesh and the rubber exterior.

This process can reset the motherboard and address issues caused by loose internal connections. If the problem persists after these steps, contact customer support.

8.2. Bluetooth Connection Issues

- Ensure the speaker is within the 100-foot Bluetooth range of your device.
- Verify that the speaker is in pairing mode (flashing LED).
- Forget the speaker from your device's Bluetooth settings and attempt to re-pair.
- Restart both the speaker and your Bluetooth device.

9. SPECIFICATIONS

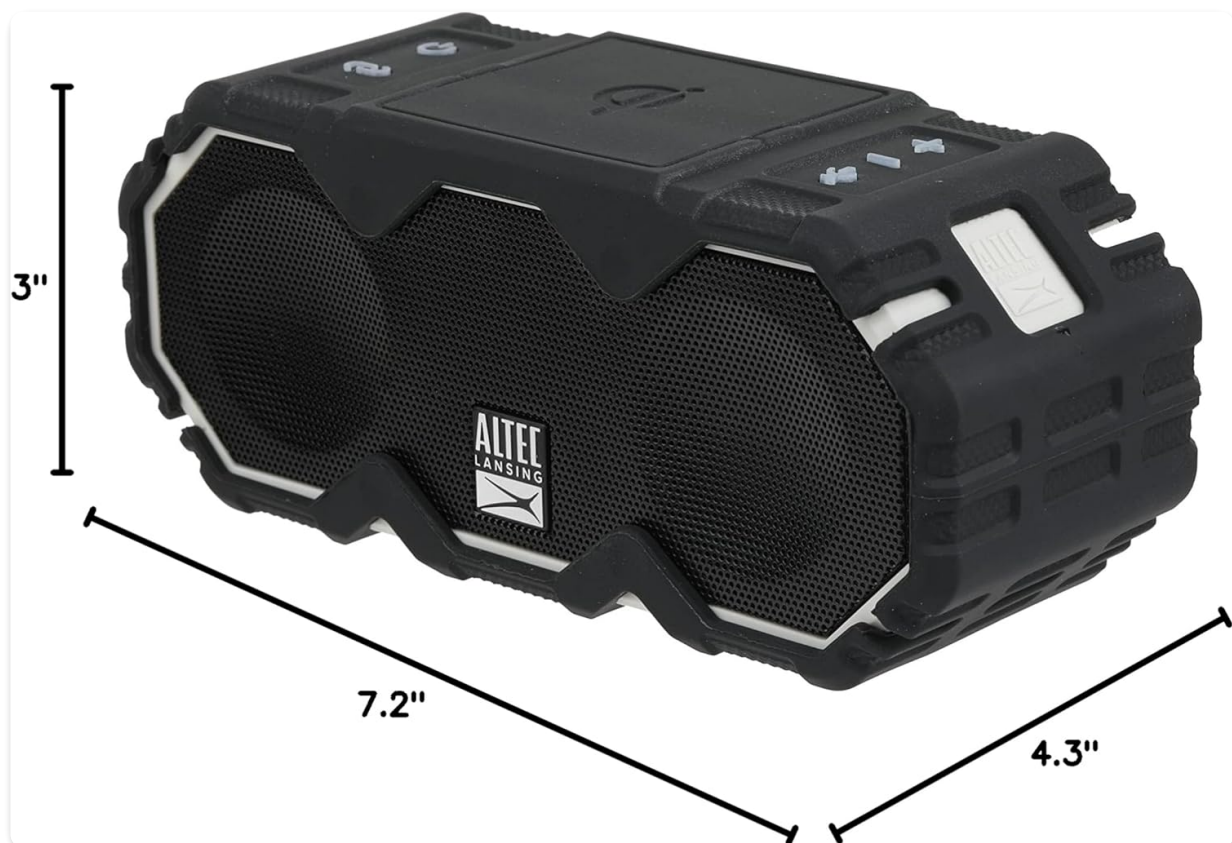


Figure 10: Product dimensions.

Feature	Detail
Model Name	Mini LifeJacket Jolt
Brand	Altec Lansing
Connectivity Technology	Bluetooth, USB
Wireless Communication	Bluetooth 4.2
Bluetooth Range	Up to 100 feet
Power Source	Battery Powered (1 Lithium Ion battery, included)
Battery Life	Up to 16 hours
Special Features	Waterproof (IP67), Shockproof, Snowproof, Dustproof, Qi Wireless Charging, USB Charging Output, Voice Assistant Integration, House Party Pairing
Speaker Type	Outdoor
Audio Output Mode	Stereo
Product Dimensions	7.2"D x 3"W x 4.3"H
Item Weight	1.52 pounds

Material	Rubber or Silicone
----------	--------------------

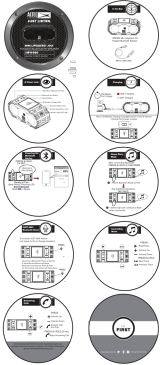

10. WARRANTY AND SUPPORT

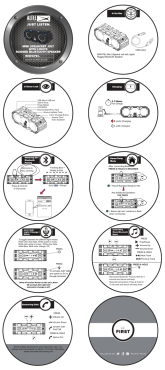
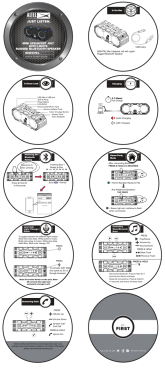
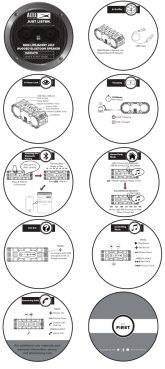
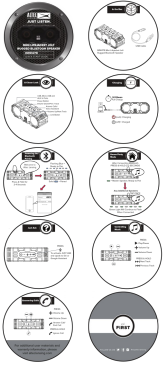
The Altec Lansing Mini LifeJacket Jolt Bluetooth Speaker comes with a Limited Warranty. For specific warranty terms and conditions, please refer to the documentation included with your product or visit the official Altec Lansing website.

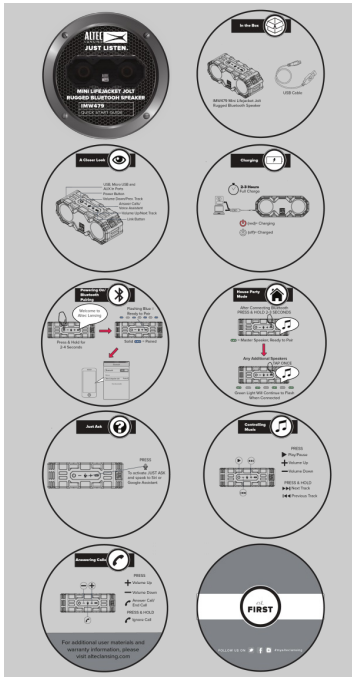
For further assistance or technical support, please visit the [Altec Lansing Brand Store on Amazon](#) or consult the official [User Manual \(PDF\)](#).

© 2025 Altec Lansing. All rights reserved.

Related Documents - Mini LifeJacket Jolt

	<p>Altec Lansing IMW480 Mini LifeJacket Jolt Rugged Bluetooth Speaker Quick Start Guide</p> <p>Quick start guide for the Altec Lansing IMW480 Mini LifeJacket Jolt Rugged Bluetooth Speaker, covering setup, charging, Bluetooth pairing, House Party Mode, music control, and call handling.</p>
	<p>Altec Lansing LifeJacket XL Jolt IMW790 Quick Start Guide</p> <p>Concise guide to setting up and using the Altec Lansing LifeJacket XL Jolt IMW790 rugged Bluetooth speaker, covering pairing, charging, house party mode, and music controls.</p>

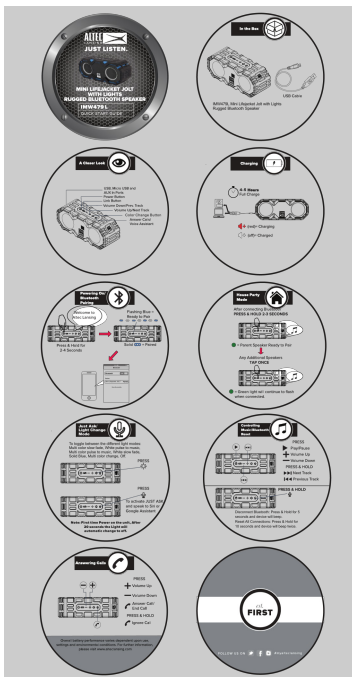
	<p>Altec Lansing Mini Lifejacket Jolt with Lights Rugged Bluetooth Speaker Quick Start Guide</p> <p>Quick start guide for the Altec Lansing Mini Lifejacket Jolt IMW479L rugged Bluetooth speaker with lights, covering setup, charging, Bluetooth pairing, House Party Mode, light modes, voice assistant activation, music control, Bluetooth reset, and call handling.</p>
	<p>Altec Lansing Mini Lifejacket Jolt IMW479L Quick Start Guide</p> <p>Quick start guide for the Altec Lansing Mini Lifejacket Jolt IMW479L rugged Bluetooth speaker with lights, covering setup, charging, pairing, music control, and call handling.</p>
	<p>Altec Lansing Mini Lifejacket Jolt IMW479 Rugged Bluetooth Speaker Quick Start Guide</p> <p>This quick start guide provides essential instructions for the Altec Lansing Mini Lifejacket Jolt IMW479 Rugged Bluetooth Speaker, including how to charge, power on, pair via Bluetooth, use House Party Mode, control music, answer calls, and activate voice assistants like Siri or Google Assistant.</p>
	<p>Altec Lansing Mini Lifejacket Jolt IMW479 Rugged Bluetooth Speaker Quick Start Guide</p> <p>This quick start guide provides essential instructions for setting up, pairing, controlling music, and managing calls on the Altec Lansing Mini Lifejacket Jolt IMW479 Rugged Bluetooth Speaker, including charging and House Party Mode.</p>



[Altec Lansing Mini LifeJacket Jolt IMW479 Rugged Bluetooth Speaker Quick Start Guide](#)

This quick start guide provides essential instructions for setting up, pairing, controlling music, and managing calls on the Altec Lansing Mini LifeJacket Jolt IMW479 Rugged Bluetooth Speaker, including charging and House Party Mode.

lang:en score:56 filesize: 5.88 M page_count: 1 document date: 2018-06-27



[\[pdf\] User Manual](#)

ALTEC LANSING MINI LIFEJACKET JOLT IMW479L 01 MANUAL Manual Hub drive google file d 12g

RA g4vBoxHQdvckc0gWaGU9BE7PNI preview |||

MINI LIFEJACKET JOLT WITH LIGHTS RUGGED BLUETOOTH SPEAKER

IMW479L Mini LifeJacket Jolt with Lights Rugged Bluetooth Speaker 4-5 Color

Change Button Mini LifeJacket JOLT Just Ask/ Light Change Mode To toggle between the different light modes: Multi color slow fade, White pulse to music, Multi colo...

lang:en score:55 filesize: 6.33 M page_count: 1 document date: 2023-09-10

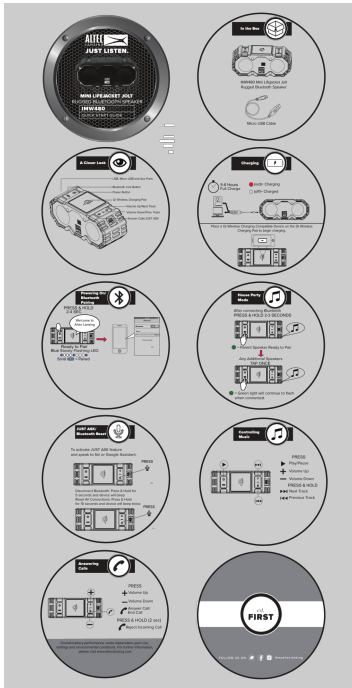


[\[pdf\] Borchure](#)

PowerPoint Presentation Lindsay Majno IMW479 BLKCBring the high quality Altec Lansing sound along on every adventure with Mini LifeJacket Jolt Bluetooth Speaker Loaded powerful700466 brochureesl a bigcontent io v1 static 700466 brochure |||

Mini LifeJacket Jolt Bring the high quality Altec Lansing sound along on every adventure with the Mini LifeJacket Jolt Bluetooth Speaker. Loaded with powerful booming sound, impressive battery life plus smartphone charger and durable IP67 waterproof rating; this speaker has everything you could ask ...

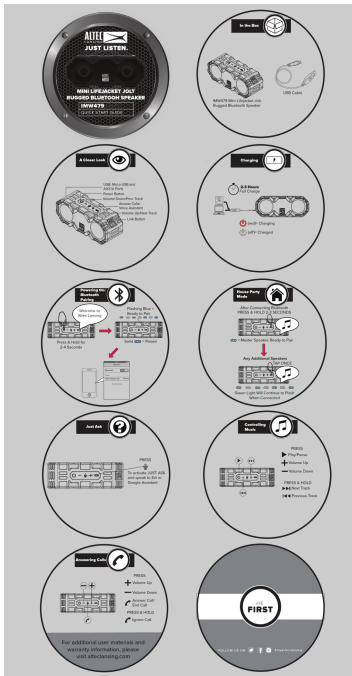
lang:en score:51 filesize: 234.95 K page_count: 1 document date: 2020-12-30



[Altec Lansing IMW480 Mini Lifejacket Jolt Rugged Bluetooth Speaker Quick Start Guide](#)

Quick start guide for the Altec Lansing IMW480 Mini Lifejacket Jolt Rugged Bluetooth Speaker, covering setup, charging, Bluetooth pairing, House Party Mode, music control, and call handling.

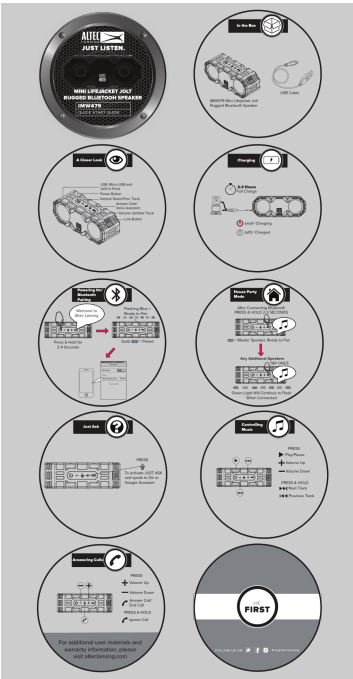
lang:en score:48 filesize: 2.86 M page_count: 1 document date: 2019-05-07



[Altec Lansing Mini Lifejacket Jolt IMW479 Rugged Bluetooth Speaker Quick Start Guide](#)

This quick start guide provides essential instructions for the Altec Lansing Mini Lifejacket Jolt IMW479 Rugged Bluetooth Speaker, including how to charge, power on, pair via Bluetooth, use House Party Mode, control music, answer calls, and activate voice assistants like Siri or Google Assistant.

lang:en score:48 filesize: 7.41 M page_count: 1 document date: 2018-04-13



[pdf] User Manual Quick Start Guide Guide Warranty

IMW479J QSG MINI LIFEJACKET JOLT RUGGED BLUETOOTH SPEAKER IMW479 Mini Altec Lansing

Imw479j Qsg Bluetooth Pairing QUICK START GUIDE USB Cable Answering Calls For additional user

materials and warranty information please visit alteclansing LifeJacket Jolt Rugged Speaker Power Button

Link Micro AUX In Ports Volume Up Next Track Down Prev Answer Voice Assistant 2 3 Hours the Box A

Closer Look Controlling Music Charging Powering On Full Charge Prior to installation carefully read s

manual follo com 329735p fa4e9875 ba84 4fb2 af37 e7c4d9977618 original 2018 06 manuals brookstone

smedia webcollage net rwwfp wc cp 1543337914343 004366f7 5cc0 467c 91c6 6e1642283e43 module

sakarinternational products 1541010237334 tab 381d4f9d 98ec 49b1 82d9 95e6da21958f content

syndigo asset 98b0e229 79ba 45db 8ac8 c48c431830b2 80

In the Box **MINI LIFEJACKET JOLT RUGGED BLUETOOTH SPEAKER IMW479**

QUICK START GUIDE A Closer Look USB, Micro USB and AUX In Ports Power

Button Volume Down/Prev. Track Answer Calls/ Voice Assistant Volume Up/Next

Track Link Button IMW479 **Mini LifeJacket Jolt** Rugged Bluetooth Speaker USB

Cable Chargi...

lang:en score:48 filesize: 7.48 M page_count: 1 document date: 2018-04-03

tehnoteka

https://tehnoteka.rs

Uputstvo za upotrebu (EN)

ALTEC LANSING bluetooth zvučnik Mini Life Jacket crni

ALTEC LANSING

Tehnoteka je online destinacija za upoređivanje cena i karakteristika bele tehnike, potrošačke elektronike i IT uređaja kod trgovinskih lanaca i internet prodavnica u Srbiji. Naša stranica vam omogućava da istražite naprvice informacije, detaljne karakteristike i konkurentne cene proizvoda.

Posećite nas i uživajte u ekskluzivnom iskustvu pametne kupovine klikom na link: <https://tehnoteka.rs/altec-lansing-bluetooth-zvucnik-mini-life-jacket-crni-akcija-cena/>

[pdf]

Uputstvo za upotrebu EN ALTEC LANSING bluetooth zvučnik Mini Life Jacket crni uputstvo en altec

lansing zvucnik mini life jacket 67174b0e2a81a api tehnoteka rs 2024 10 |||

https://tehnoteka.rs Uputstvo za upotrebu EN ALTEC LANSING bluetooth zvucnik

Mini Life Jacket crni ... a link: [https://tehnoteka.rs/p/altec-lansing-bluetooth-zvucnik-](https://tehnoteka.rs/p/altec-lansing-bluetooth-zvucnik-mini-life-jacket-crni-akcija-cena/)

mini-life-jacket-crni-akcija-cena/ **MINI LIFEJACKET JOLT WITH LIGHTS RUGGED**

BLUETOOTH SPEAKER IMW479L **Mini LifeJacket Jolt** with Lights ...

lang:en score:44 filesize: 3.39 M page_count: 3 document date: 2024-10-22

[pdf]

ALTEC LANSING TURNS UP THE POWER ON EVERYTHING LAS VEGAS NV January 8 2018 CES

Booth 16029 Altec Lansing innovator in audio will unveil an entirely new line of Everything Proof

Bluetooth Altec Lansing CES Jolt Line Final alteclansing 01

ALTEC LANSING TURNS UP THE POWER ON EVERYTHING-PROOF JOLT LINE

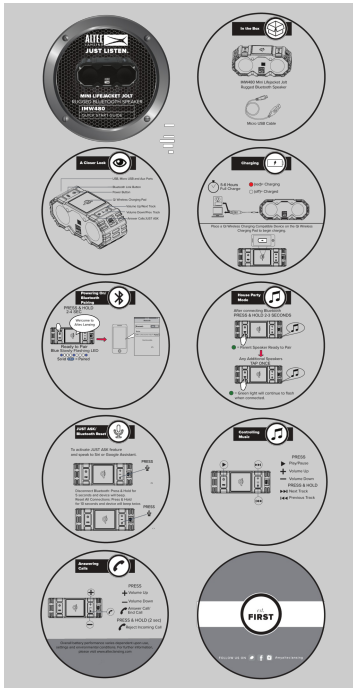
OF SPEAKERS WITH NEW QI WIRELESS CHARG ... ne. The Voice Assistant

Integration and Qi Wireless Charging is now available in the newly released Mini

LifeJacket Jolt, LifeJacket Jolt, LifeJacket XL Jolt, Super LifeJacket Jolt, and

BoomJacket Jol...

lang:en score:44 filesize: 108.62 K page_count: 2 document date: 0000-00-00



[pdf] Quick Start Guide Guide

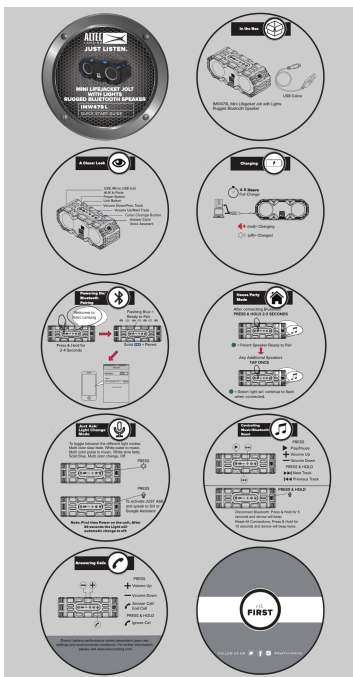
IMW480 Mini Lifejacket Jolt QSG 07 May cdr Mike IMW480 Mini Lifejacket Jolt QSG Altec Lansing To activate JUST ASK feature and speak to Siri or Google Assistant PRESS Play Pause Volume Up Down HOLD Next Track Previous Disconnect Bluetooth Press Hold for 5 seconds device will beep Reset All Connections 10 twice In the Box A Closer Look House Party Mode Charging Powering On Pairing QUICK START GUIDE 6 Hours Full Charge Answering Calls Answer Call alteclansing 2019 05 In the Box **MINI LIFEJACKET JOLT RUGGED BLUETOOTH SPEAKER IMW480** QUICK START GUIDE A Closer Look USB, Micro USB and Aux Ports Bluetooth Link Button Power Button Qi Wireless Charging Pad Volume Up/Next Track Volume Down/Prev. Track Answer Calls/JUST ASK IMW480 **Mini Lifejacket Jolt** Rugged Bluetooth S...

lang:en score:42 filesize: 2.88 M page_count: 1 document date: 2019-05-23



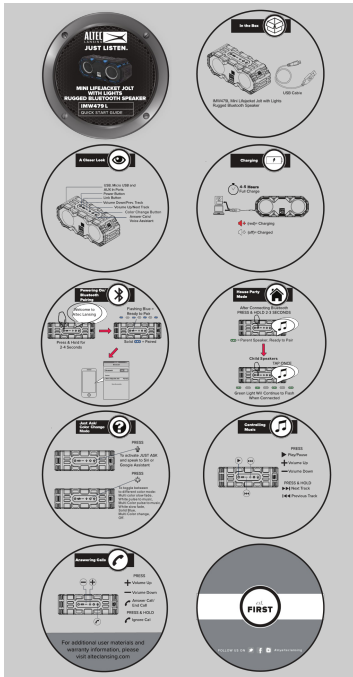
[pdf]

Uputstvo za upotrebu EN ALTEC LANSING bluetooth zvučnik Mini Life Jacket crveni mini life jacket akcija cena 1 3 Page 2 Color Change Button 4 5 IMW479L Lifejacket Jolt with Lights Rugged Bluetooth Speaker MINI uputstvo en alttec lansing zvucnik 67174aa575d84 api tehnoteka rs 2024 10 ||| https://tehnoteka.rs Uputstvo za upotrebu EN ALTEC LANSING bluetooth zvucnik Mini Life Jacket crve ... link: https://tehnoteka.rs/p/alttec-lansing-bluetooth-zvucnik-mini-life-jacket-crveni-akcija-cena/ **MINI LIFEJACKET JOLT WITH LIGHTS RUGGED BLUETOOTH SPEAKER IMW479L Mini Lifejacket Jolt** with Lights ... lang:en score:42 filesize: 3.41 M page_count: 3 document date: 2024-10-22



Altec Lansing Mini Lifejacket Jolt IMW479L Quick Start Guide

Quick start guide for the Altec Lansing Mini Lifejacket Jolt IMW479L rugged Bluetooth speaker with lights, covering setup, charging, pairing, music control, and call handling. lang:en score:40 filesize: 1.91 M page_count: 1 document date: 2023-08-28



[\[pdf\]](#) Quick Start Guide

IMW479L FINAL QSG cdr Mike MINI LIFEJACKET JOLT WITH LIGHTS RUGGED BLUETOOTH

SPEAKER Altec Lansing To toggle between to different color mode Multi slow fade White pulse music

Color Solid Blue Mini LifeJacket Jolt with Lights Rugged Bluetooth Speaker Parent Ready Pair Child

Speakers alteclansing 2019 03

MINI LIFEJACKET JOLT WITH LIGHTS RUGGED BLUETOOTH SPEAKER

IMW479L **Mini LifeJacket Jolt** with Lights Rugged Bluetooth Speaker 4-5 Color

Change Button Just Ask/ Color Change Mode To toggle between to different color

mode: Multi color slow fade, White pulse to music, Multi Color pulse to music, White...

lang:en **score:39** filesize: 1.74 M page_count: 1 document date: 2019-03-12



[\[pdf\]](#) Troubleshooting Guide Guide

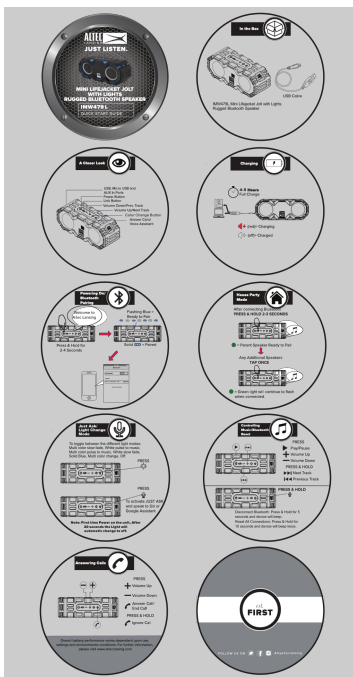
Marissa Cosmas Settings Bluetooth Now discoverable as MY DEVICES Troubleshooting Guide Altec

Lansing iPhone Connected j Not Mini LifeJacket JOLT True Connect Page 1 MZX635 guide alteclansing

2019 07

...

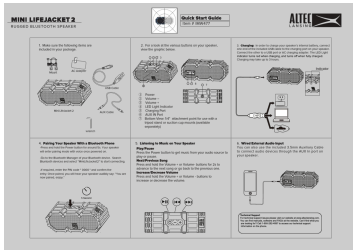
lang:en **score:38** filesize: 243.97 K page_count: 1 document date: 2019-07-03



[Altec Lansing Mini LifeJacket Jolt with Lights Rugged Bluetooth Speaker Quick Start Guide](#)

Quick start guide for the Altec Lansing Mini LifeJacket Jolt IMW479L rugged Bluetooth speaker with lights, covering setup, charging, Bluetooth pairing, House Party Mode, light modes, voice assistant activation, music control, Bluetooth reset, and call handling.

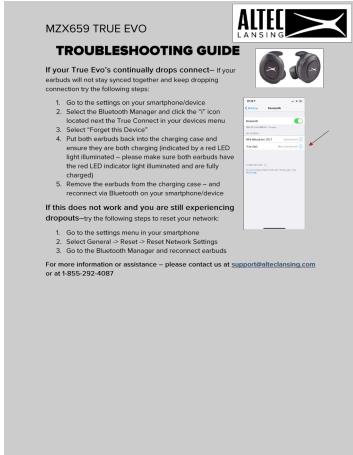
lang:en **score:37** filesize: 3.14 M page_count: 1 document date: 2019-05-21



[Altec Lansing Mini Lifejacket 2 Rugged Bluetooth Speaker Quick Start Guide](#)

A quick start guide for the Altec Lansing Mini Lifejacket 2 Rugged Bluetooth Speaker (Item # IMW477), covering package contents, speaker buttons, charging, Bluetooth pairing, music playback, and wired audio input.

lang:en score:28 filesize: 4.33 M page_count: 2 document date: 2015-12-04



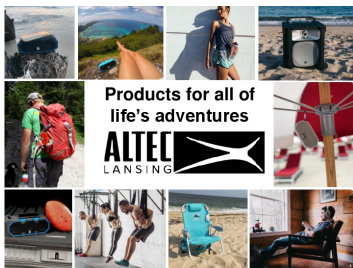
[\[pdf\] Troubleshooting Guide Guide](#)

Marissa Cosmas 11 16 39 Settings Bluetooth NOW discoverable as MY DEVICES Troubleshooting Guide

Altec Lansing Untitled Connected j Not D Mini Lifejacket JOLT True CVO OTHER To pair an Apple watch with your iPhone go to the If Evo s continually drops connect earbuds will not stay synced together and keep dropping connection try following steps 1 Go MZX659 guide original alteclansing 2019 07 content syndigo asset 4a29a3ec 0600 48d9 8da3 f6d954f4f050 80

...

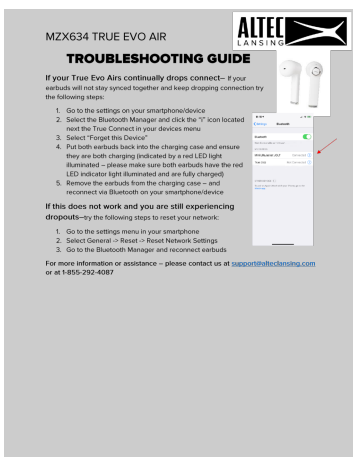
lang:en score:26 filesize: 166.59 K page_count: 1 document date: 2019-07-15



[\[pdf\] Specifications](#)

PowerPoint Presentation Marissa Cosmas Products for all of life s adventures HEADPHONES Page 3 True Evo ANC MZX859 Up to 4 hours battery Access Siri and Google Voice Assistant 6mm Neodymium Drivers Charging Carry Case with 4 Altec Lansing 2019 mmt au api prodspec 14AL MZX634 ||| Products for all of life s adventures All Specs 10.18.17 HEADPHONES. True Evo ANC MZX859 6mm Neo ... P67 Waterproof Rating True Wireless Pairing Bluetooth 4.2 Built-in hook with Included Carry Strap Mini LifeJacket Jolt IMW479 6 Watt 3x2 , 1.5 x 2 Neodymium Drivers and one 86mm x 36mm passive rad...

lang:en score:23 filesize: 4.72 M page_count: 39 document date: 2019-01-30



[\[pdf\] Troubleshooting Guide Guide](#)

Marissa Cosmas 11 16 39 Settings Bluetooth NOW discoverable as MY DEVICES Troubleshooting Guide

Altec Lansing Untitled Connected j Not D Mini Lifejacket JOLT True CVO OTHER To pair an Apple watch with your iPhone go to the Watch aW Author Created Date 7 15 2019 29 58 AM earbuds will not stay synced together and keep dropping connectio connection try following steps MZX634 guide 54248c8a 842d 4c4a a2e0 be69afa0125a original alteclansing 07 smedia webcollage net rwwfp wc cp 1563204935628 d90c2787 881f 4a60 81f9 3b4155fd87b7 module sakarinternational products 1553035426311 tab 4c8885f2 a4b2 43c2 9f5a b4a3d3d55d05 content syndigo asset 1db5d49a 5204 4def a081 b8f3c564d12d 80

...

lang:en score:11 filesize: 162.16 K page_count: 1 document date: 2019-07-15