



[Manuals.plus](#) /

> [Italeri](#) /

> Italeri 3935S 1:24 M-B Actros MP4 Show GigaSpace Model Kit Instruction Manual

## Italeri 3935S

# Italeri 3935S 1:24 M-B Actros MP4 Show GigaSpace Model Kit Instruction Manual

Model: 3935S | Brand: Italeri

[Introduction](#)

[Safety Guidelines](#)

[Assembly Preparation  
Product](#)

[Model Assembly](#)

[Care and  
Display](#)

[Troubleshooting](#)

[Specifications](#)

[Support Information](#)

## 1. INTRODUCTION

---

This instruction manual provides detailed guidance for assembling the Italeri 3935S 1:24 M-B Actros MP4 Show GigaSpace plastic model kit. Please read all instructions carefully before beginning assembly to ensure a smooth and successful building experience. This kit is designed for model enthusiasts aged 14 and up.



Image 1: The Italeri 3935S M-B Actros MP4 Show GigaSpace model kit, showcasing the finished product.

## 2. SAFETY GUIDELINES

---

Adhere to the following safety precautions during assembly:

- **Small Parts:** This kit contains small parts that may pose a choking hazard. Keep out of reach of young children.
- **Sharp Tools:** Assembly requires the use of sharp tools such as hobby knives and nippers. Handle with care to prevent injury. Adult supervision is recommended for younger builders.
- **Adhesives and Paints:** Use plastic model cement and paints (if applicable) in a well-ventilated area. Avoid prolonged skin contact and inhalation of fumes. Refer to the specific product's safety data sheet for detailed information.
- **Age Recommendation:** This model kit is recommended for individuals 14 years of age and older.

## 3. ASSEMBLY PREPARATION

---

### 3.1. Tools Required

The following tools are generally recommended for assembling plastic model kits:

- **Plastic Nippers/Side Cutters:** For cleanly removing parts from the sprues.
- **Hobby Knife/Craft Blade:** For trimming excess plastic (flash) and fine detailing.
- **Files/Sanding Sticks:** For smoothing cut edges and preparing surfaces.
- **Tweezers:** For handling small parts.

- **Plastic Cement (Polystyrene Glue):** Specifically designed for bonding plastic model parts.
- **Cutting Mat:** To protect your work surface.

### 3.2. Paints and Finishing (Optional)

This kit is supplied unpainted, allowing for customization. While painting is optional, it significantly enhances the model's appearance. If you choose to paint, consider using acrylic or enamel model paints. Refer to the box art or reference images for color scheme ideas. No specific paints are included or required for basic assembly.

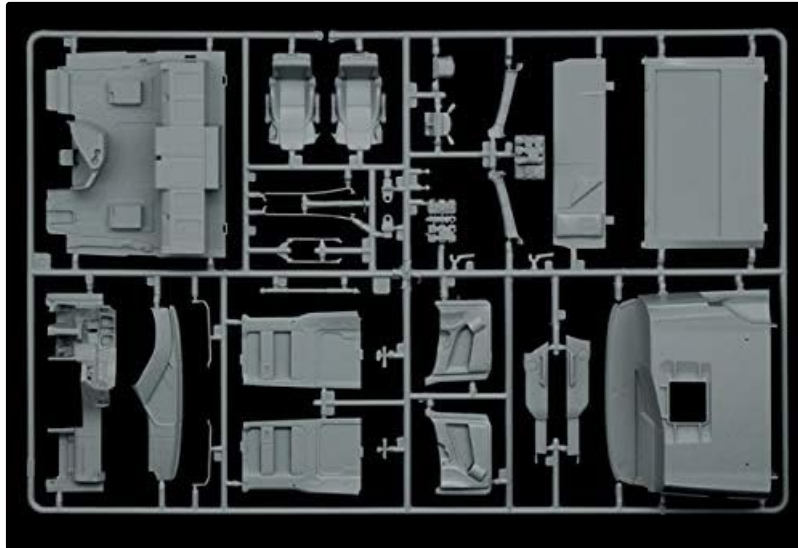
## 4. MODEL ASSEMBLY

---

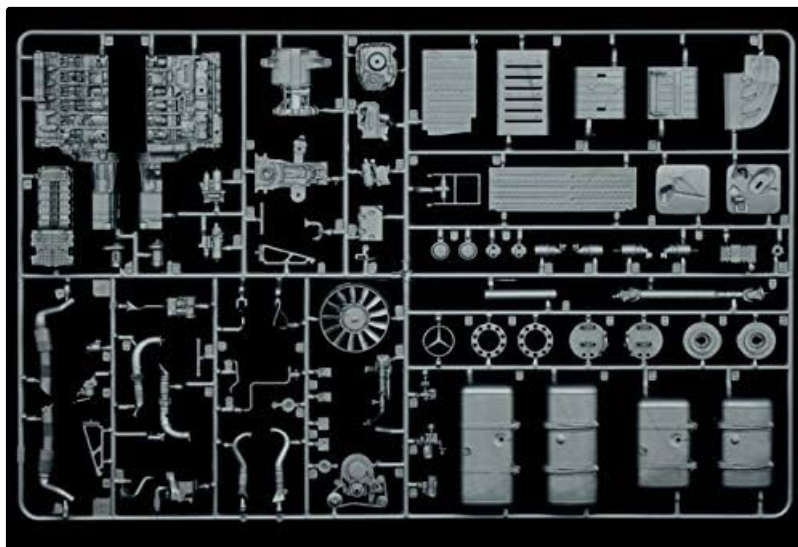
Before starting, familiarize yourself with the parts layout on the sprues and the assembly diagrams provided in the kit. The following steps outline the general assembly process:

### 4.1. Understanding the Sprues

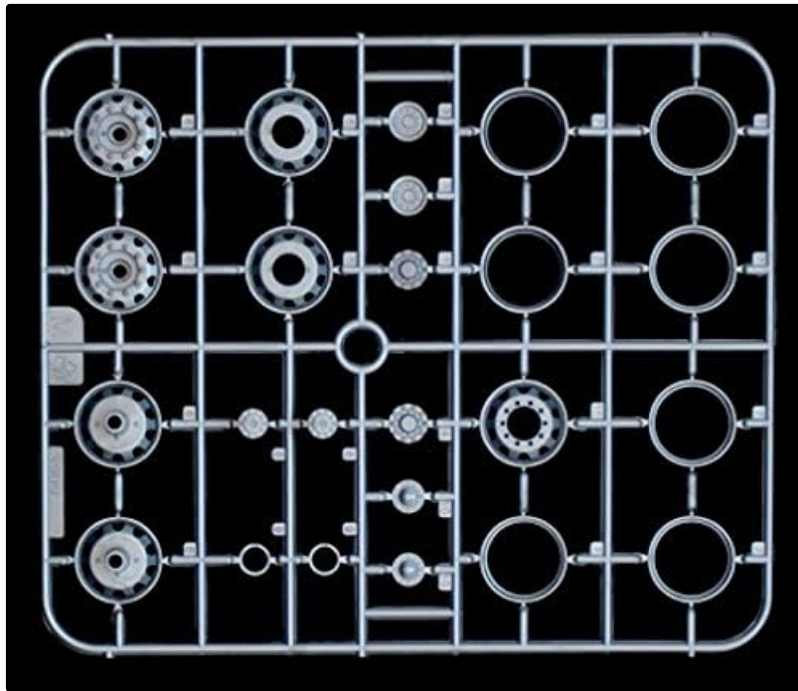
The kit components are molded onto plastic frames called sprues. Carefully identify each part before removal.



*Image 2: Example sprue with cab and interior components.*



*Image 3: Example sprue with engine and chassis components.*



*Image 4: Example sprue with wheels and various small detail parts.*

## 4.2. Step-by-Step Assembly Process

1. **Part Removal:** Carefully cut parts from the sprues using nippers. Avoid pulling or twisting, which can damage parts.
2. **Cleaning and Trimming:** Use a hobby knife or sanding stick to remove any excess plastic (flash) or nubs left from the sprue gates. Ensure parts fit together smoothly.
3. **Dry Fitting:** Before applying glue, dry fit parts together to check for proper alignment and fit. This helps prevent errors.
4. **Gluing:** Apply a small amount of plastic cement to the mating surfaces. Hold parts together firmly until the glue sets. Avoid using too much glue, as it can melt the plastic or leave unsightly marks.
5. **Painting (Optional):** If painting, it is often easier to paint sub-assemblies or individual parts before final assembly. Allow paint to dry completely between coats and before handling.
6. **Decals:** Apply decals according to the kit's instructions. Use water to slide decals into position and a soft cloth to gently press out air bubbles.
7. **Final Assembly:** Assemble the main components, ensuring all parts are securely attached and aligned.

**Note:** Always refer to the detailed diagrammatic instructions included in your kit for specific part numbers and assembly sequences. These diagrams are crucial for correct construction.

## 5. CARE AND DISPLAY

---

Once assembled, proper care will preserve your model's appearance:

- **Cleaning:** Dust your model regularly with a soft brush or a can of compressed air. Avoid using harsh chemicals or abrasive materials.
- **Display:** Display your model in a cool, dry place away from direct sunlight, which can cause colors to fade or plastic to warp. A display case can protect it from dust and accidental damage.
- **Handling:** Handle the model by its sturdy parts, such as the chassis or main body, to avoid damaging delicate details.



Item Model Number	3935S
Scale	1:24
Material	Plastic
Color	Unpainted
Product Dimensions	14.69 x 9.49 x 4.65 inches
Item Weight	2.11 pounds
Recommended Age	14 years and up
Included Components	Kit (plastic parts)

## 8. WARRANTY AND SUPPORT INFORMATION

---

For any questions regarding your Italeri 3935S model kit, including missing parts or assembly difficulties not covered in this manual, please contact Italeri customer support directly. Refer to the packaging for specific contact details or visit the official Italeri website for assistance.

Italeri products are manufactured to high-quality standards. Any warranty information will be provided with the product packaging or available through the manufacturer's official channels.