

TP-Link Archer T4E

TP-Link AC1200 PCIe WiFi Card (Archer T4E) Instruction Manual

Model: Archer T4E

1. PRODUCT OVERVIEW

The TP-Link Archer T4E is an AC1200 PCIe WiFi Card designed to upgrade your desktop computer's wireless capabilities. It supports the IEEE 802.11ac standard, providing faster wireless speeds compared to older Wireless N adapters. This card offers dual-band connectivity (2.4 GHz and 5 GHz) for flexible and stable network connections.

Key features include:

- **Dual-Band Wi-Fi:** Supports 867 Mbps on the 5 GHz band and 300 Mbps on the 2.4 GHz band for a total of 1200 Mbps.
- **Heat Sink Technology:** An integrated heat sink helps dissipate thermal energy, enhancing the adapter's stability and lifespan, especially during high-performance tasks like online gaming or 4K video streaming.
- **External Antennas:** Two high-gain external antennas provide an extended wireless range and improved signal stability. These antennas are detachable for easy adjustment.
- **Beamforming:** This technology focuses Wi-Fi signals towards connected devices, improving reception and overall wireless performance.
- **Advanced Security:** Supports WPA/WPA2 encryption standards to secure your wireless connection.
- **Wide Compatibility:** Compatible with Windows 11, 10, 8.1, 8, 7, and XP operating systems.



Image: The TP-Link Archer T4E AC1200 PCIe WiFi Card, featuring its heat sink and two external antennas.



Image: Illustration of the dual-band Wi-Fi capabilities, highlighting 867 Mbps on the 5GHz band and 300 Mbps on the 2.4GHz band.

2. SETUP AND INSTALLATION

This section outlines the steps for physically installing the Archer T4E PCIe WiFi Card into your desktop computer and installing the necessary drivers.

2.1 Package Contents

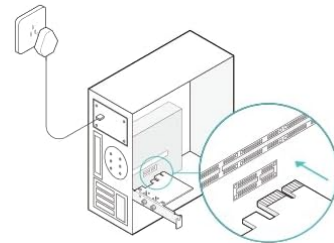
Ensure your package contains the following items:

- TP-Link Archer T4E AC1200 PCIe WiFi Card

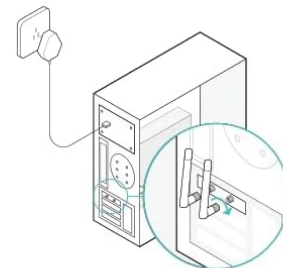
- Two detachable antennas
- Low-profile bracket (for small form factor cases)
- Resource CD (for drivers and utility)

Easy Set Up

1 Locate an available PCI-E slot and carefully insert the adapter

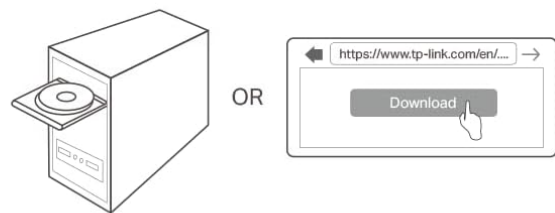


2 Connect the antenna to the adapter



3 Install the software with the included CD or download from official TP-Link website

<https://www.tp-link.com/en/support/download/archer-t5e/#Driver>



4 Scan for the available networks and connect to finish the installation



Image: The Archer T4E card shown with both the standard full-height bracket and an optional low-profile bracket for different PC case sizes.

2.2 Hardware Installation

- 1. Power Off Your Computer:** Completely shut down your computer and disconnect the power cable from the power supply.
- 2. Open the Computer Case:** Remove the side panel of your computer case to access the motherboard.
- 3. Locate an Available PCIe Slot:** Find an empty PCI Express (PCIe) slot on your motherboard. The Archer T4E requires a PCIe x1 slot or larger.
- 4. Insert the WiFi Card:** Carefully align the gold contacts of the Archer T4E card with the chosen PCIe slot. Press down firmly and evenly until the card is securely seated.
- 5. Secure the Card:** Use a screw to fasten the card's bracket to the computer case. If you have a small form factor case, you may need to replace the pre-installed full-height bracket with the included low-

profile bracket.

6. **Connect Antennas:** Screw the two detachable antennas onto the connectors on the back of the WiFi card. Adjust their orientation for optimal signal reception.
7. **Connect Internal USB Cable (for Bluetooth functionality):** If your Archer T4E model includes Bluetooth functionality, connect the provided internal USB cable from the WiFi card to an available F-USB header on your motherboard. This connection is essential for Bluetooth to function.
8. **Close the Computer Case:** Reattach the side panel of your computer case.
9. **Reconnect Power:** Plug the power cable back into your computer and power it on.

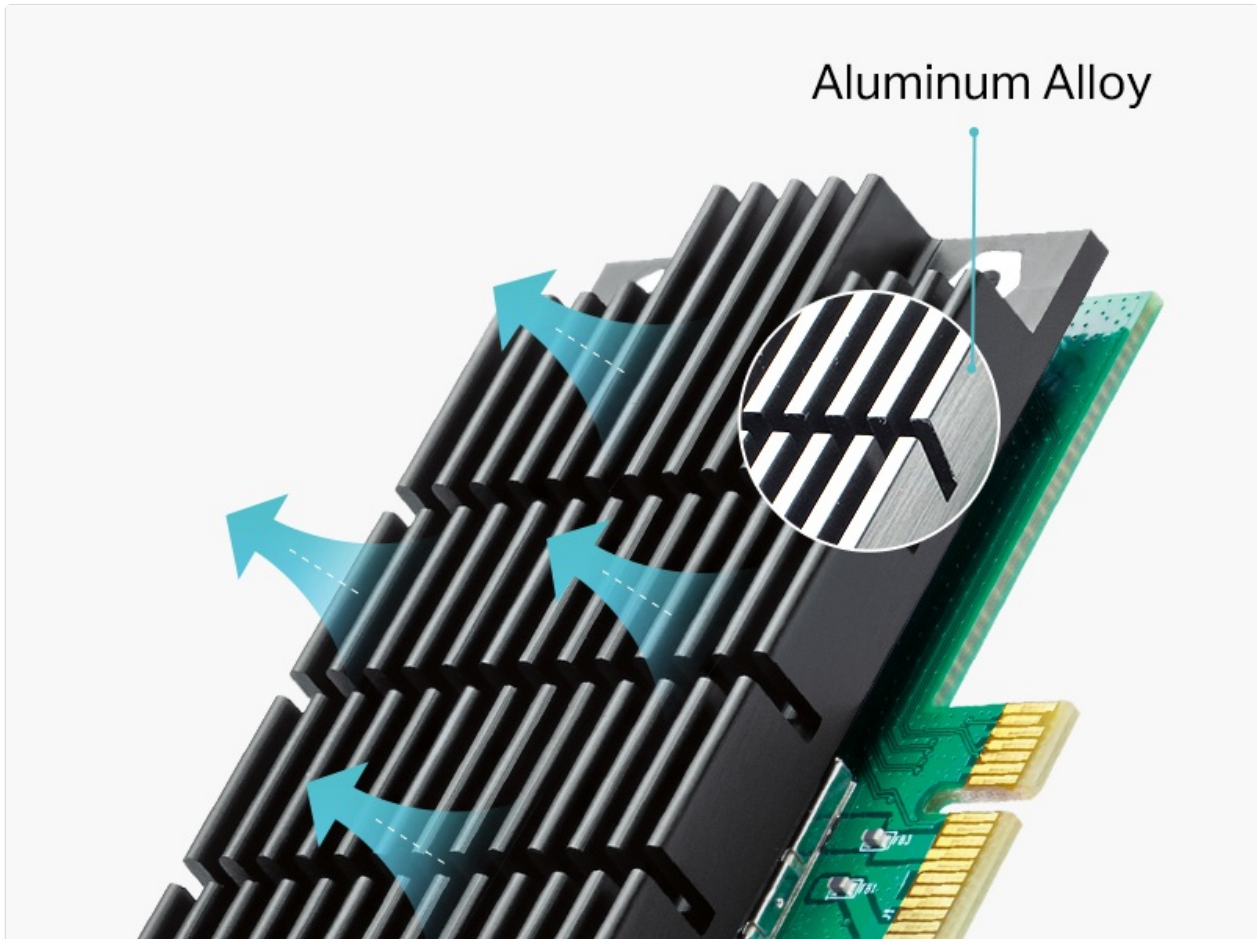


Image: A visual guide illustrating the four main steps for installing the Archer T4E: inserting the card into a PCIe slot, connecting the antennas, installing drivers, and connecting to a Wi-Fi network.

2.3 Driver Installation

After hardware installation, you need to install the drivers for the WiFi card to function correctly.

1. **Using the Resource CD:** Insert the included Resource CD into your computer's optical drive. Follow the on-screen instructions to install the drivers and utility.
2. **Downloading Drivers Online:** If your computer does not have an optical drive or if you prefer the latest drivers, visit the official TP-Link support website. Navigate to the Archer T4E product page and download the appropriate drivers for your operating system. The direct link for drivers is typically found under the Support section: [TP-Link Archer T4E Driver Download](#).
3. **Complete Installation:** Follow the instructions provided by the driver installer. You may need to restart your computer after installation.

3. OPERATING THE WiFi CARD

Once the drivers are installed, your computer should recognize the Archer T4E WiFi Card. You can now connect to wireless networks.

3.1 Connecting to a Wireless Network

1. **Access Network Settings:**

- **Windows 10/11:** Click the Wi-Fi icon in the taskbar (bottom-right corner) or go to **Settings > Network & Internet > Wi-Fi**.
- **Older Windows Versions:** Go to **Control Panel > Network and Sharing Center > Change adapter settings**, then right-click on 'Wireless Network Connection' and select 'Connect/Disconnect'.

2. **Select Your Network:** A list of available wireless networks will appear. Select your desired network (SSID).

3. **Enter Security Key:** If the network is secured, enter the Wi-Fi password (security key) when prompted.

4. **Connect:** Click 'Connect'. Your computer should now be connected to the wireless network.

3.2 Utilizing Dual-Band and Beamforming

The Archer T4E automatically utilizes the optimal band (2.4 GHz or 5 GHz) and Beamforming technology to provide the best connection. For devices that support it, connecting to the 5 GHz band typically offers higher speeds and less interference, while the 2.4 GHz band provides a wider range.



Image: A diagram showing how Beamforming technology directs Wi-Fi signals more efficiently towards the Archer T4E, improving signal strength and coverage compared to a regular adapter.

3.3 Bluetooth Functionality (if applicable)

If your Archer T4E model includes Bluetooth and you have connected the internal USB cable to your motherboard, you can pair Bluetooth devices:

1. **Enable Bluetooth:** In Windows, go to **Settings > Devices > Bluetooth & other devices** and ensure Bluetooth is turned 'On'.
2. **Pair a Device:** Put your Bluetooth device (e.g., headphones, mouse) into pairing mode. Click 'Add Bluetooth or other device' on your computer and select the device from the list to pair.

4. MAINTENANCE

To ensure optimal performance and longevity of your Archer T4E WiFi Card, consider the following maintenance practices:

- **Keep Drivers Updated:** Regularly check the TP-Link support website for the latest drivers. Updated drivers can improve performance, stability, and compatibility.
- **Ensure Proper Airflow:** The integrated heat sink relies on proper airflow within your computer case to dissipate heat effectively. Ensure your case fans are functioning and that the PCIe slot area is not obstructed.
- **Antenna Positioning:** Periodically adjust the external antennas to find the best orientation for signal reception, especially if you move your computer or router.

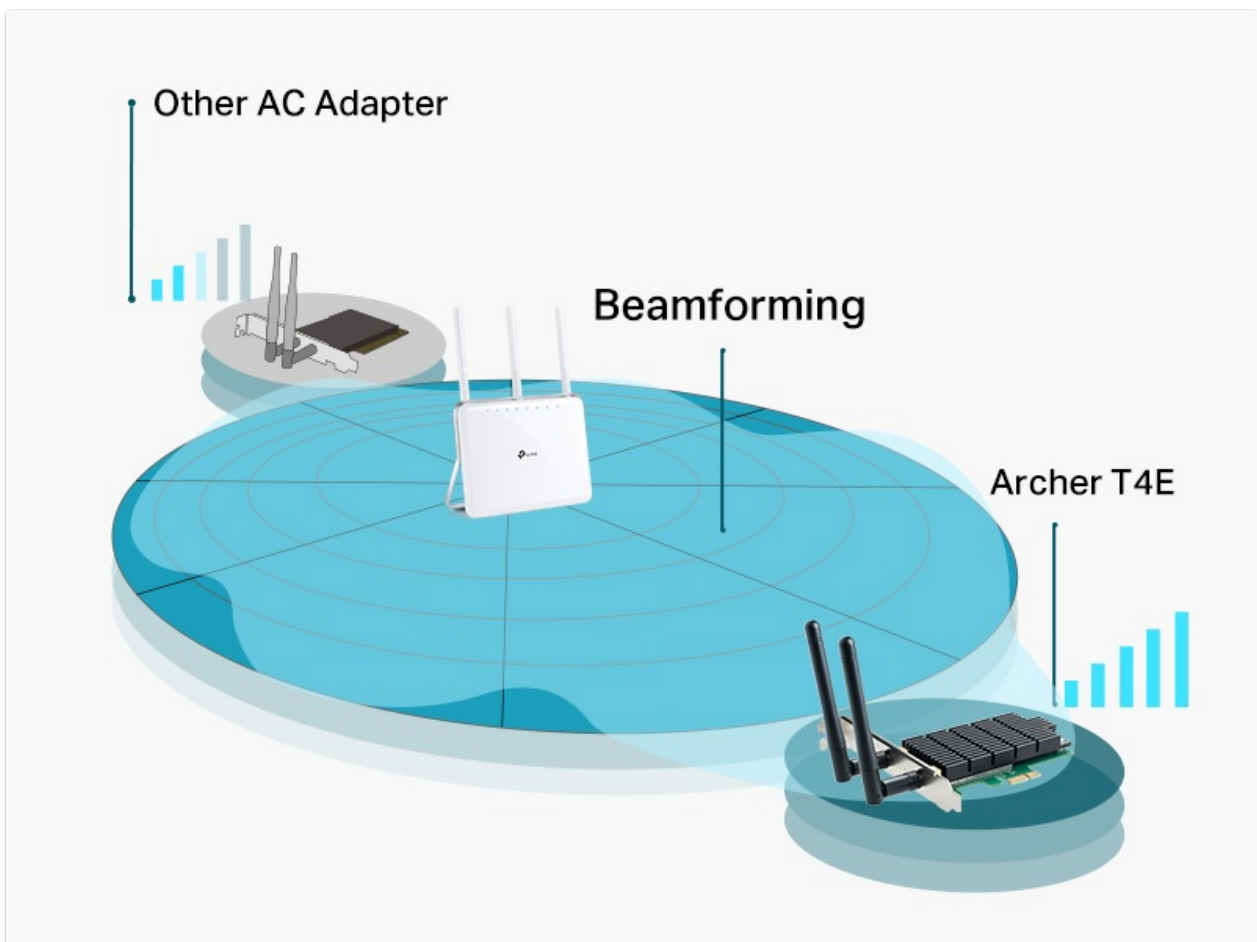


Image: An illustration detailing the heat sink technology on the Archer T4E, showing how thermal energy is dissipated to maintain stability.

5. TROUBLESHOOTING

If you encounter issues with your Archer T4E WiFi Card, refer to the following common troubleshooting steps:

5.1 Wi-Fi Not Working / Bluetooth Not Working

- **Check Physical Installation:** Ensure the card is fully seated in the PCIe slot.
- **Verify Internal USB Connection (for Bluetooth):** If Bluetooth is not working, confirm that the internal USB cable is securely connected from the WiFi card to an F-USB header on your motherboard. Bluetooth functionality relies on this connection, not just the PCIe slot.
- **Driver Status:** Open Device Manager in Windows. Check if the Archer T4E appears under 'Network adapters' and 'Bluetooth'. If there are yellow exclamation marks or unknown devices, the drivers may not be installed correctly or are corrupted.
- **Reinstall Drivers:** Uninstall the current drivers from Device Manager, then restart your computer and reinstall the latest drivers from the TP-Link website.
- **Try a Different PCIe Slot:** If possible, try installing the card in another available PCIe slot on your motherboard to rule out a faulty slot.

5.2 Blue Screen of Death (BSoD) After Installation

While rare, driver conflicts can sometimes lead to a Blue Screen of Death. If this occurs:

1. **Access Network Adapter Settings:** Go to **Start > Control Panel > Network and Internet > Network and Sharing Center > Change adapter settings**.
2. **Identify the Adapter:** Right-click on 'Wireless Network Connection' (or 'Local Area Connection' if the issue is with a wired adapter) and select 'Properties'.
3. **Uninstall Driver:** In the Properties window, click 'Configure' and then navigate to the 'Driver' tab. Click 'Uninstall Device' (or 'Uninstall Driver'). Confirm the uninstallation.
4. **Restart Computer:** Restart your computer. Windows will typically attempt to reinstall a generic driver or prompt for driver installation. Proceed with installing the official TP-Link drivers.

5.3 Poor Signal or Slow Speeds

- **Adjust Antennas:** Experiment with different antenna orientations to optimize signal reception.
- **Router Placement:** Ensure your wireless router is centrally located and free from obstructions.
- **Interference:** Other electronic devices (e.g., microwaves, cordless phones) can cause interference. Try to minimize their proximity to your computer and router.
- **Router Settings:** Ensure your router's firmware is up to date and that it is configured for optimal performance (e.g., using appropriate channels, enabling Beamforming if supported by the router).
- **Network Congestion:** If many devices are using the same Wi-Fi network, it can lead to slower speeds. Consider using the 5 GHz band for devices requiring higher bandwidth.

6. SPECIFICATIONS

Feature	Specification
Model	Archer T4E
Brand	TP-Link
Hardware Interface	PCI Express (PCIe)

Feature	Specification
Wireless Standards	IEEE 802.11 ac/n/a 5 GHz, IEEE 802.11n/g/b 2.4 GHz
Data Transfer Rate	867 Mbps (5 GHz), 300 Mbps (2.4 GHz)
Antennas	2x Detachable External Antennas
Security	WPA/WPA2 encryption
Dimensions (W x D x H)	4.76 x 4.54 x 0.85 inches (120.9 x 115.2 x 21.5 mm)
Item Weight	4.3 ounces (121.9 grams)
Operating System Support	Windows 11/10/8.1/8/7/XP (32/64 bit)
UPC	840030700040

7. WARRANTY AND SUPPORT

TP-Link provides comprehensive support for the Archer T4E WiFi Card.

- **Warranty:** The product comes with a 2-year warranty.
- **Technical Support:** Free 24/7 technical support is available.

For further assistance, driver downloads, or warranty information, please visit the official TP-Link support website: [TP-Link Support](#)