

Nexete KS-602S

Nexete Smart Wi-Fi Dimmer Switch Instruction Manual

MODEL: KS-602S

Brand: Nexete

1. Introduction

This manual provides detailed instructions for the installation, operation, and maintenance of your Nexete Smart Wi-Fi Dimmer Switch (Model KS-602S). This device allows you to control and dim your lighting remotely via a mobile application, voice commands through smart assistants like Alexa and Google Assistant, or directly from the switch. It supports both single-pole and 3-way wiring configurations.

2. Safety Information

WARNING: RISK OF ELECTRIC SHOCK. Improper installation can be dangerous or illegal. Always consult a qualified electrician if you are unsure about any part of the installation process.

- Turn off power at the circuit breaker before installation.
- Ensure a neutral wire is present in your electrical box. A neutral wire is required for this smart dimmer switch to function.
- Do not exceed the maximum wattage ratings: 450W for incandescent lamps, 150W for dimmable LED/CFL bulbs.
- This device is for indoor use only.
- Use only with compatible dimmable bulbs. Do not use with non-dimmable bulbs or smart bulbs.

3. Package Contents

- Nexete Smart Wi-Fi Dimmer Switch (KS-602S)
- Wall Plate
- Wire Nuts
- Screws

- User Manual

4. Product Overview

The Nexete Smart Wi-Fi Dimmer Switch offers advanced control over your home lighting. Key features include:

- **0-100% Dimming:** Adjust brightness to your preference.
- **Brightness Memory:** Remembers the last light setting when powered off.
- **Voice Control:** Compatible with Amazon Alexa and Google Assistant.
- **Remote Control & Scheduling:** Control lights from anywhere using the Smart Life/Tuya Smart APP, and set schedules.
- **Single Pole & 3-Way Application:** Can be used in both single-pole and 3-way circuits.

4.1. Switch Components

Familiarize yourself with the physical components of the dimmer switch:

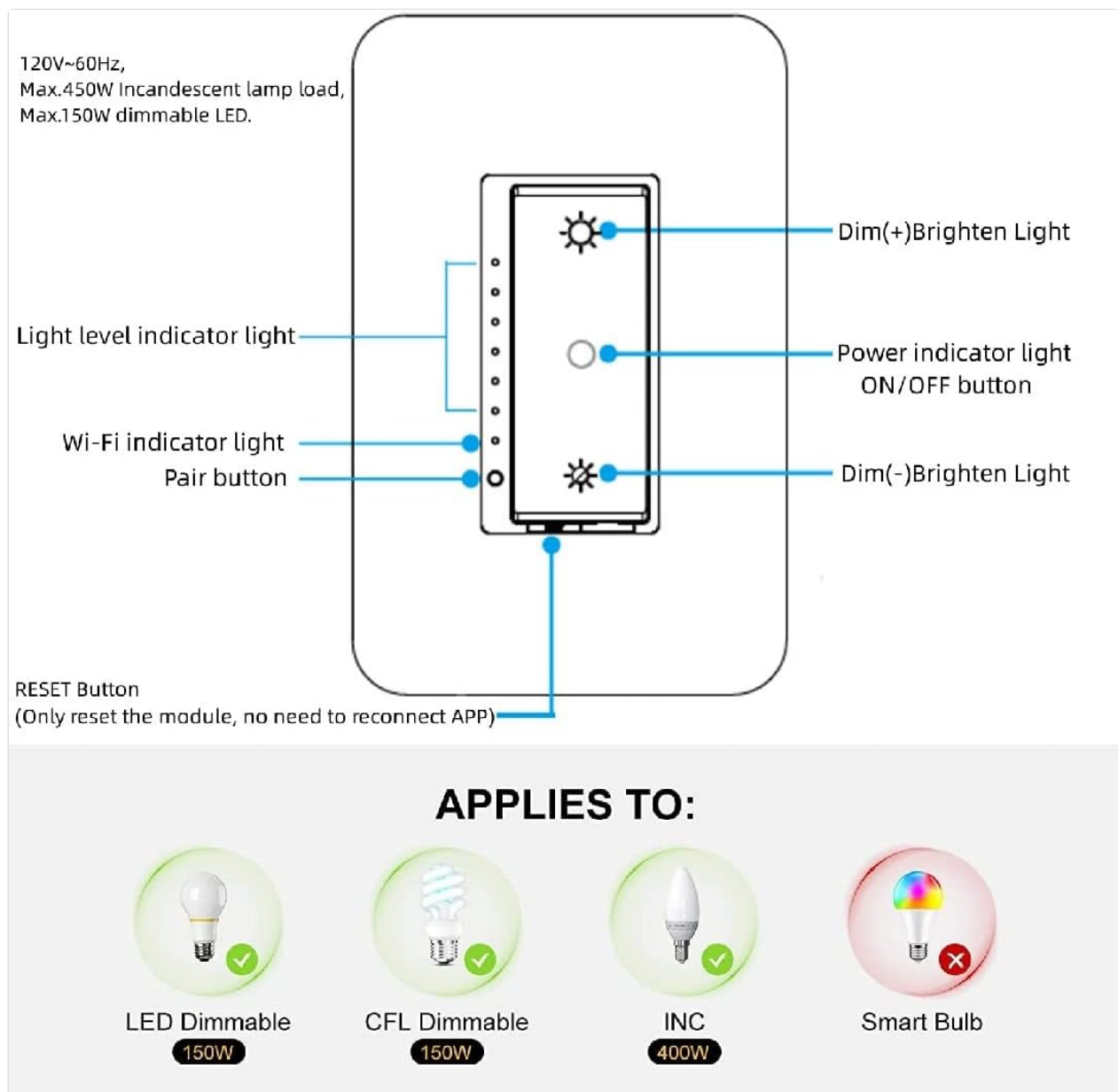


Image Description: This diagram illustrates the various parts of the Nexete Smart Wi-Fi Dimmer Switch. It shows the Dim(+) button for brightening, the Dim(-) button for dimming, the Power ON/OFF button, the Wi-Fi indicator light, the light level indicator lights, and the RESET button. The diagram also indicates compatibility with LED Dimmable (150W), CFL Dimmable (150W), and INC (400W) bulbs, while explicitly stating incompatibility with Smart Bulbs.

- **Dim(+)** / **Brighten Light**: Touch to increase brightness.
- **Dim(-)** / **Dim Light**: Touch to decrease brightness.
- **Power ON/OFF Button**: Touch to turn lights on or off.
- **Light Level Indicator Lights**: Displays the current brightness level.
- **Wi-Fi Indicator Light**: Shows Wi-Fi connection status.
- **Pair Button**: Used for pairing with the mobile application.
- **RESET Button**: Resets the module without disconnecting from the app.

5. Setup

5.1. Pre-Installation Checklist

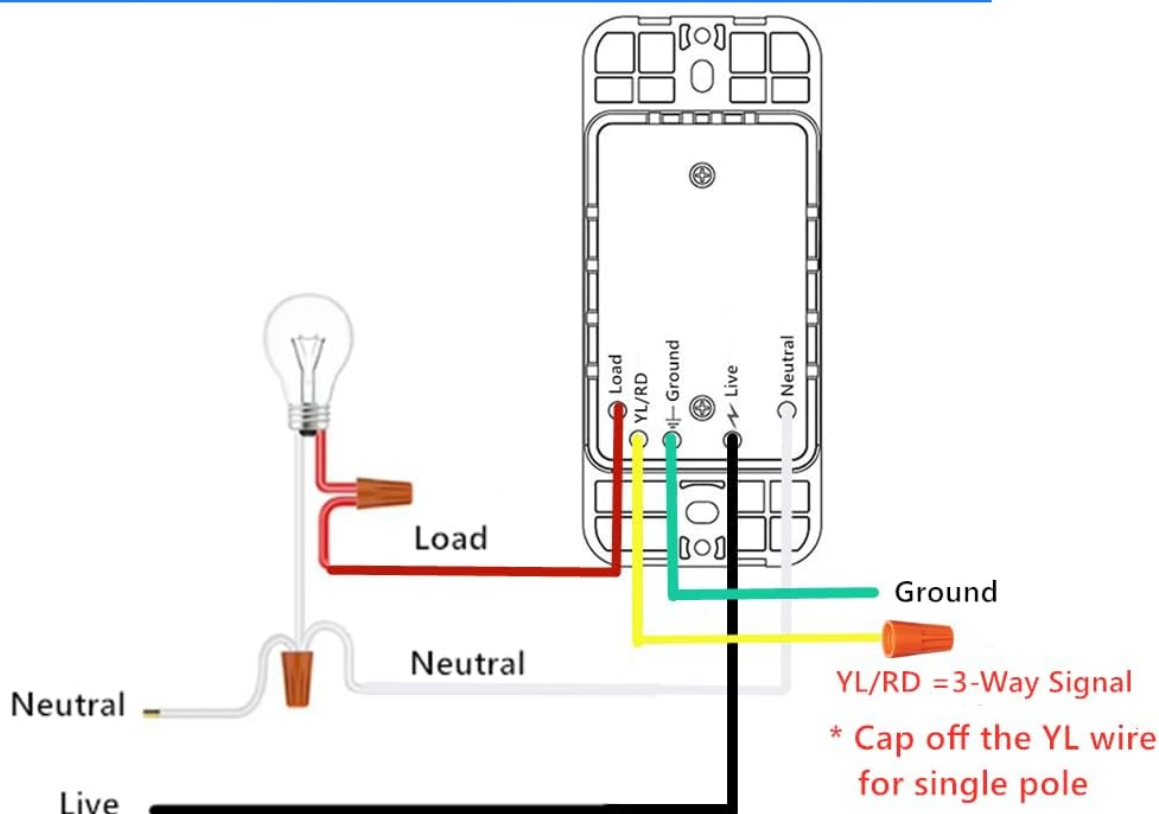
- Ensure you have a neutral wire (usually white) in your electrical box.
- Confirm your existing switch is a single-pole or 3-way configuration.
- Verify your bulbs are dimmable LED, CFL, or incandescent.
- You will need a 2.4GHz Wi-Fi network.

5.2. Wiring Instructions

IMPORTANT: Always turn off power at the circuit breaker before beginning any electrical work.

5.2.1. Single Pole Wiring Diagram

Product Single Control Wiring Diagram



Neutral Wire		White or gray represents the Neutral Wire
Live Wire		Black or Red represents Live wire
YL/RD		Black, Red or White represents Traveler wire
Live/Load		Red or Black represents Load wire
Ground		Bare copper wire represents the Ground wire

1. Use this traveler for 3 way
2. Cap off this traveler for single pole
3. When use for single pole, this traveler MUST BE INSULATED

Image Description: This diagram illustrates the wiring for a single-pole setup of the Nexete Smart Wi-Fi Dimmer Switch. It shows connections for Live (black), Neutral (white), Load (red/black), and Ground (green) wires. The YL/RD (traveler) wire should be capped off and insulated for single-pole use. A caution advises to use this product with a 4A circuit breaker upstream.

For single-pole installations, connect the wires as follows:

- **Live Wire:** Connect to the Live terminal on the switch.
- **Neutral Wire:** Connect to the Neutral terminal on the switch.
- **Load Wire:** Connect to the Load terminal on the switch.
- **Ground Wire:** Connect to the Ground terminal on the switch.
- **YL/RD (Traveler) Wire:** For single-pole use, this wire must be capped off and insulated.

5.2.2. 3-Way Wiring Diagram (Replacing One Switch)

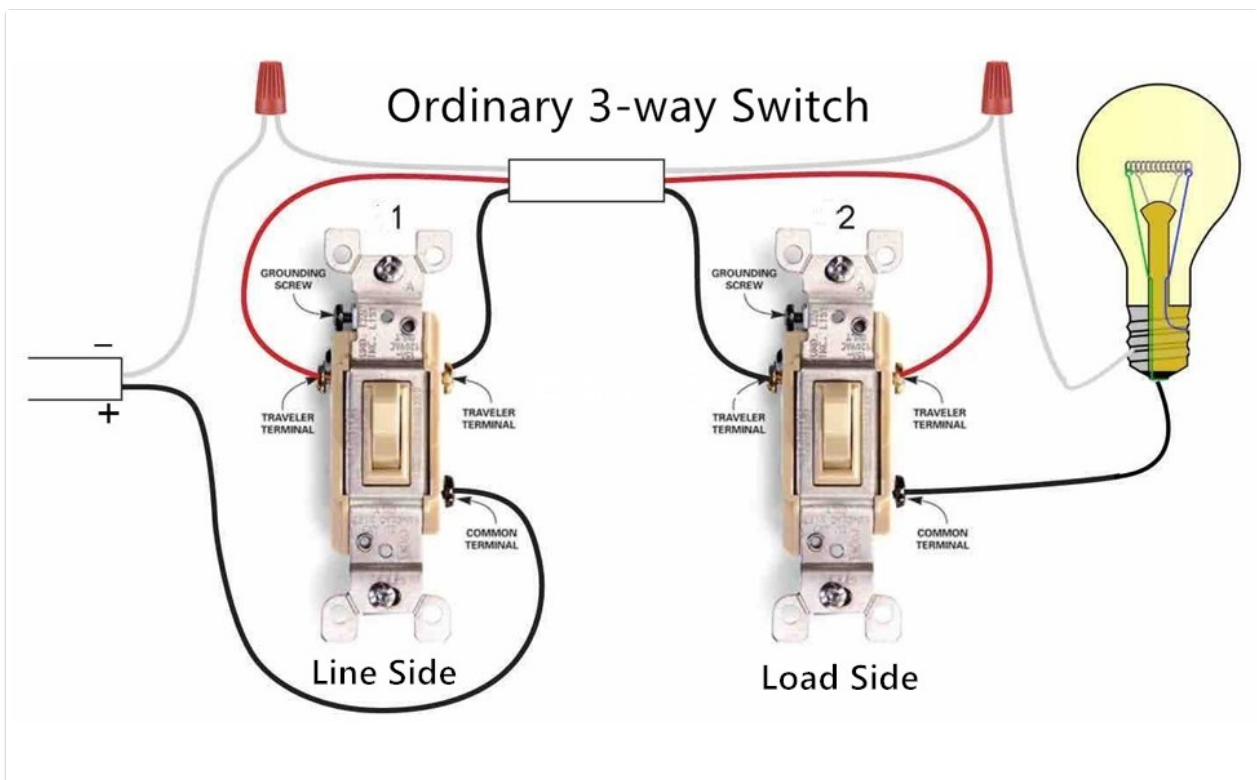


Image Description: This diagram illustrates a 3-way wiring setup where one traditional switch is replaced with the Nexete Smart Wi-Fi Dimmer Switch. It shows how to use an unused traveler wire to bring live power to the load side for the smart switch. The diagram highlights the connections for Live, Neutral, Load, and Traveler wires, emphasizing that the smart switch requires both Live and Neutral wires.

For 3-way installations, where you replace one existing 3-way switch with the smart dimmer, a creative use of an unused traveler wire is often required to deliver live power to the smart switch. Refer to the diagram carefully and ensure all connections are secure. The smart dimmer should be installed on the load side if the load side did not have live power, using one traveler to connect power for the live wire.

5.2.3. 3-Way Wiring Diagram (Two Smart Dimmers)

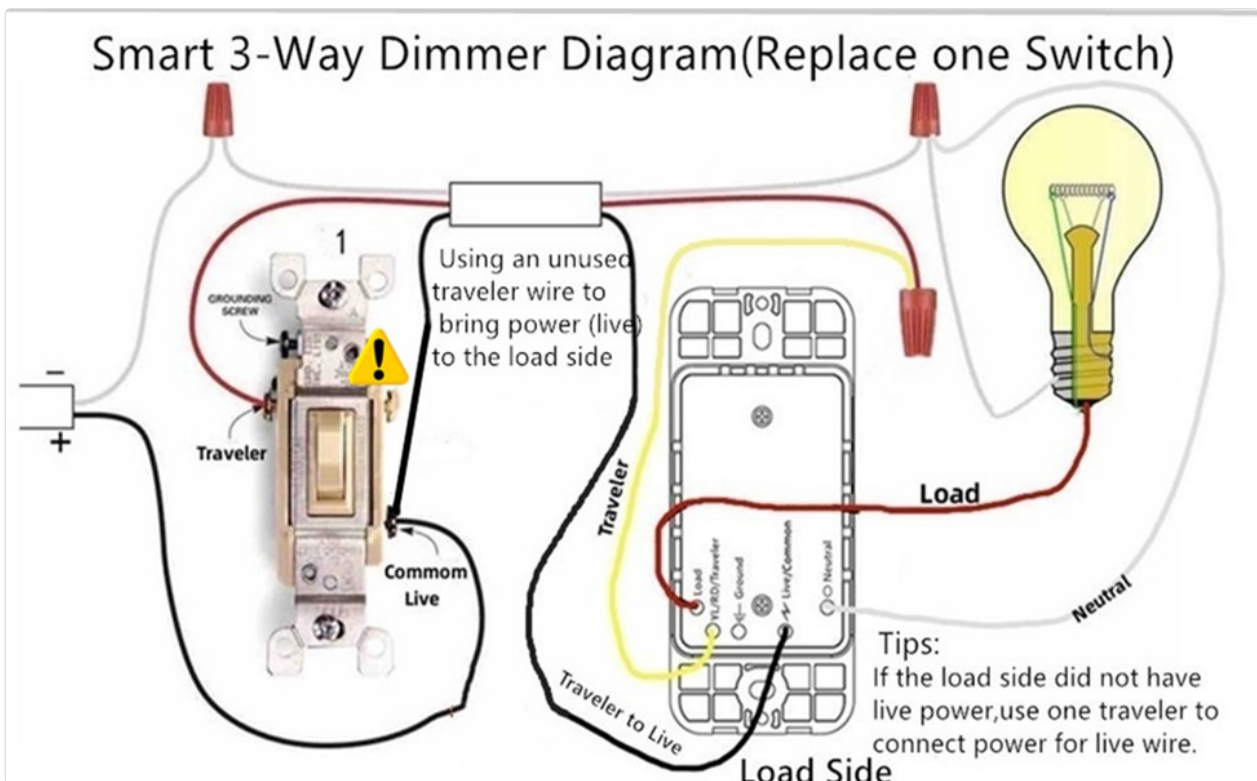


Image Description: This diagram shows a 3-way wiring setup utilizing two Nexete Smart Wi-Fi Dimmer Switches. It details the connections for Live, Neutral, Load, and Traveler wires for both switches, indicating that both smart dimmers require Live and Neutral wires for proper operation.

If installing two smart dimmers in a 3-way circuit, ensure both switches receive a Live and Neutral connection. Follow the diagram for proper traveler wire connections between the two smart switches.

5.3. App Installation and Pairing

The Nexete Smart Wi-Fi Dimmer Switch uses the Smart Life or Tuya Smart application for remote control and smart features.

1. Download the **Smart Life** or **Tuya Smart** app from the App Store (iOS) or Google Play Store (Android).
2. Register or log in to your account.
3. Ensure your phone is connected to a 2.4GHz Wi-Fi network.
4. Restore power to the switch at the circuit breaker. The Wi-Fi indicator light on the switch should blink rapidly. If not, press and hold the Pair button for 5-10 seconds until it blinks rapidly.
5. In the app, tap '+' to add a device. Select 'Lighting' > 'Dimmer Switch (Wi-Fi)'.
6. Follow the on-screen instructions to connect the switch to your Wi-Fi network.
7. Once connected, you can rename the switch and control it via the app.

6. Operating Instructions

6.1. Manual Control

You can control the light directly from the switch:

- Touch the **Power ON/OFF button** to toggle the light on or off.
- Touch the **Dim(+)** button to increase the brightness.
- Touch the **Dim(-)** button to decrease the brightness.

0%-100% Dimmable

Easily get the control with one finger to your own various need.



Image Description: This image demonstrates a hand interacting with the Nexete Smart Wi-Fi Dimmer Switch to adjust light brightness. The switch features a vertical row of indicator lights showing the dimming level, and touch-sensitive areas for increasing or decreasing light intensity. The image also shows a room with lighting adjusted to 100%, 50%, and 20% brightness levels.

6.2. App Control

After successful pairing, use the Smart Life/Tuya Smart app to control your dimmer switch:

- **Remote ON/OFF:** Turn lights on or off from anywhere.
- **Dimming:** Adjust brightness using the slider in the app.
- **Scheduling:** Set timers or schedules for lights to turn on/off or dim at specific times.
- **Scenes:** Create custom scenes for different moods or activities.

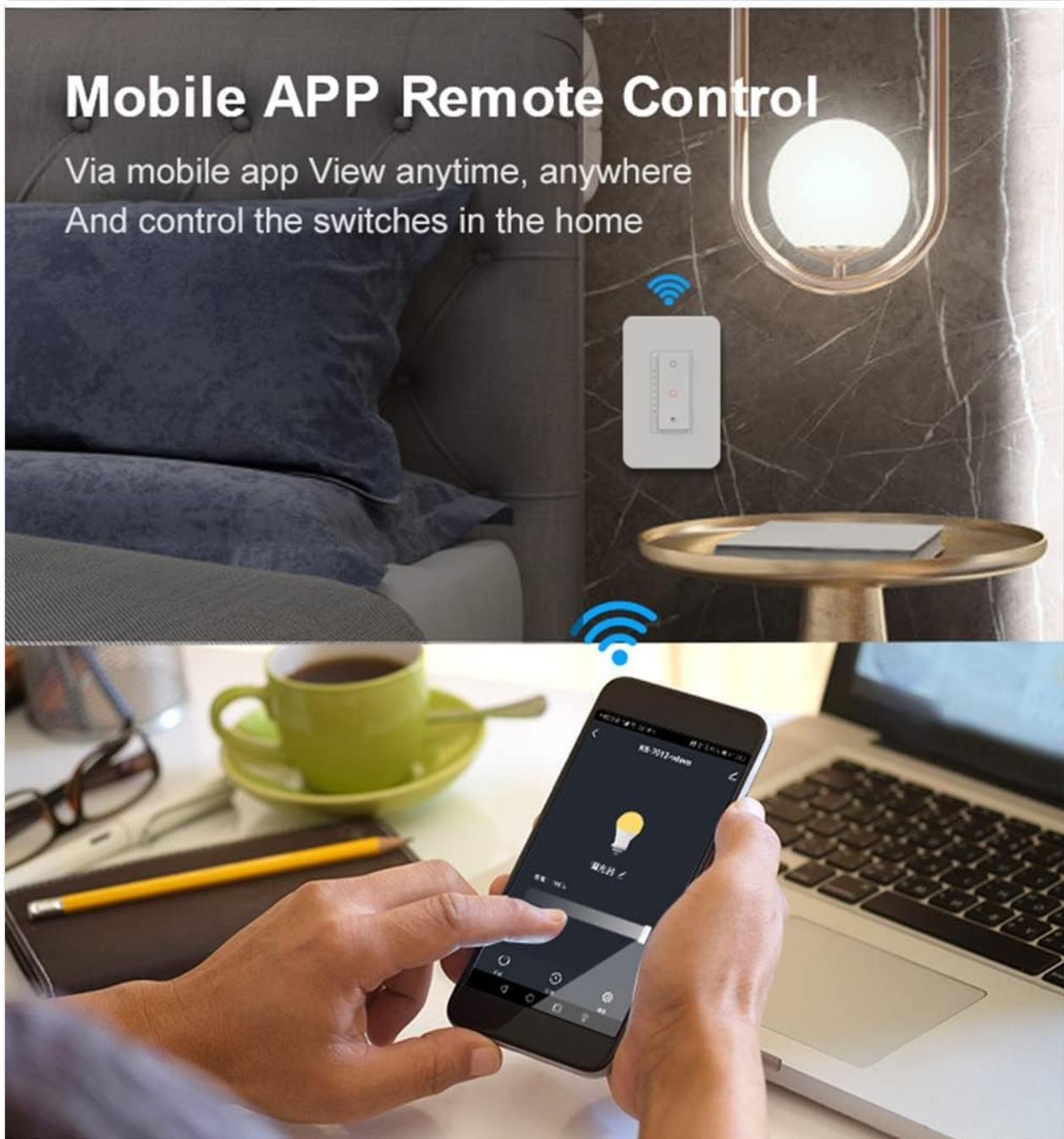


Image Description: This image displays a smartphone screen showing the Smart Life/Tuya Smart app interface, which is used to remotely control the Nexete Smart Wi-Fi Dimmer Switch. The app allows users to turn lights on/off and adjust brightness from anywhere, as depicted by the switch icon and a light bulb graphic on the phone screen. The background shows a modern living space, illustrating the convenience of remote control.

6.3. Voice Control

Integrate your Nexete Smart Wi-Fi Dimmer Switch with Amazon Alexa or Google Assistant for hands-free control.

1. Link your Smart Life/Tuya Smart account to Alexa or Google Home app.
2. Discover devices in the Alexa/Google Home app.
3. Use voice commands such as:
 - "Alexa, turn on [Light Name]."
 - "Hey Google, dim [Light Name] to 50%."
 - "Alexa, turn off [Light Name]."

Your browser does not support the video tag.

Video Description: This video demonstrates the voice control functionality of the Nexete Smart Dimmer Switch with a smart assistant. It shows a living room setting where a user issues commands like "Alexa, turn off the living room light" and "Alexa, turn on the living room light," and the lights respond accordingly, showcasing seamless integration and hands-free operation.

7. Maintenance

To ensure optimal performance and longevity of your Nexete Smart Wi-Fi Dimmer Switch:

- Clean the switch surface with a soft, dry cloth. Avoid abrasive cleaners or solvents.
- Do not expose the switch to excessive moisture or extreme temperatures.
- Regularly check for firmware updates through the Smart Life/Tuya Smart app to ensure the latest features and security patches.

8. Troubleshooting

If you encounter issues with your Nexete Smart Wi-Fi Dimmer Switch, refer to the following common problems and solutions:

Problem	Possible Cause	Solution
Switch does not power on.	No power at the circuit breaker; incorrect wiring; no neutral wire.	Check circuit breaker; verify wiring against diagrams; ensure neutral wire is connected.
Wi-Fi indicator not blinking/connecting.	Incorrect Wi-Fi password; 5GHz network; switch not in pairing mode; weak Wi-Fi signal.	Ensure 2.4GHz Wi-Fi; re-enter password; press and hold Pair button to enter pairing mode; move router closer or use Wi-Fi extender.
Lights flicker or do not dim properly.	Non-dimmable bulbs; incompatible bulb type; minimum load not met.	Replace with dimmable LED/CFL/incandescent bulbs; ensure total wattage meets minimum requirements (if any).
Remote control/Voice control not working.	No internet connection; app not linked to smart assistant; incorrect device name.	Check internet connection; re-link Smart Life/Tuya Smart account; verify device name in app and smart assistant.

9. Specifications

Specification	Value
Model Number	KS-602S
Operation Mode	ON-OFF
Current Rating	15 Amps
Operating Voltage	110-120 Volts (AC)
Wattage	Max. 450W Incandescent, Max. 150W Dimmable LED/CFL
Connectivity Protocol	Wi-Fi (2.4GHz only)
Control Method	App, Touch, Voice
Controller Type	Compatible with Amazon Alexa / Google Home, Google Assistant, IFTTT

Specification	Value
Contact Type	Normally Open
Terminal	Screw
Item Dimensions (L x W x H)	4.1 x 1.8 x 1.5 inches
Item Weight	7.6 ounces
International Protection Rating	IP54
Material	Copper (Contact Material)
Certifications	ETL Certified

10. Warranty Information

Nexete products are designed and manufactured to the highest quality standards. For specific warranty details, including coverage period and terms, please refer to the warranty card included with your product or visit the official Nexete website. Keep your purchase receipt as proof of purchase for warranty claims.

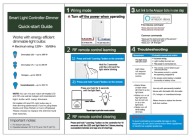

11. Support

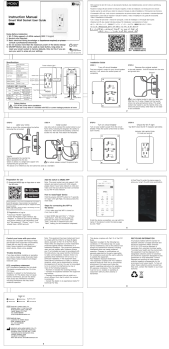
For technical assistance, troubleshooting, or general inquiries regarding your Nexete Smart Wi-Fi Dimmer Switch, please contact Nexete customer support:

- **Website:** Visit the official Nexete website for FAQs and support resources.
- **Email:** Refer to your product packaging or the Nexete website for customer service email contact.
- **Phone:** Refer to your product packaging or the Nexete website for customer service phone number.

When contacting support, please have your product model number (KS-602S) and purchase information ready.

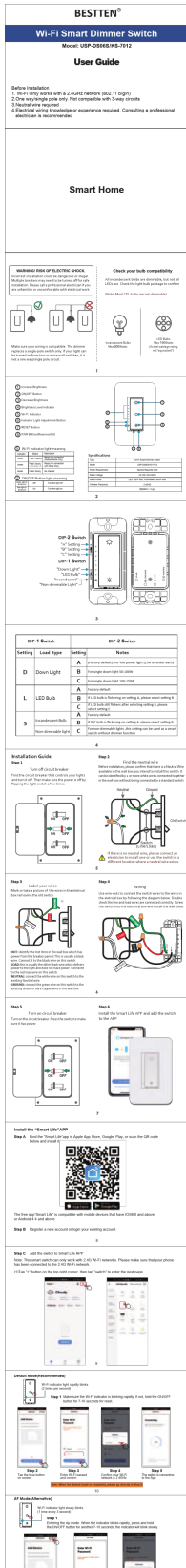
Related Documents - KS-602S

	<p>Nexete Smart Light Controller-Dimmer Quick-start Guide</p> <p>Quick-start guide for the Nexete Smart Light Controller-Dimmer, covering wiring, RF remote pairing, Amazon Alexa integration, and troubleshooting for various dimmable bulbs.</p>
	<p>eco4life SWAP-ME-SMART ULTRA KS-602S Wi-Fi Smart Wall Light Switch User Manual</p> <p>Comprehensive user manual for the eco4life SWAP-ME-SMART ULTRA KS-602S Wi-Fi Smart Wall Light Switch, covering installation, features, app setup, and compatibility with Alexa, Google Assistant, and IFTTT.</p>



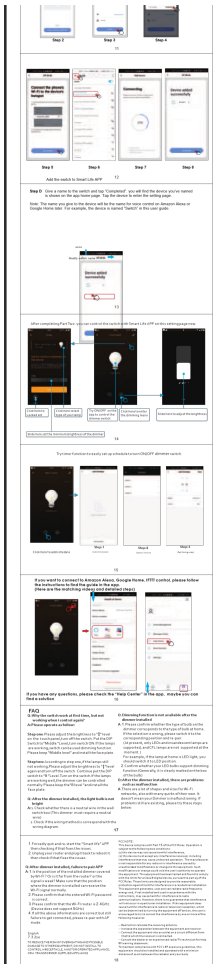
[MOES Smart Wall Socket KS-604S User Guide & Installation Manual](#)

Comprehensive user guide and installation manual for the MOES Smart Wall Socket KS-604S, covering setup, app connection, voice control, and troubleshooting. Includes specifications, safety notices, and compliance information.



[BESTTEN Wi-Fi Smart Dimmer Switch USP-DS06S/KS-7012 User Guide](#)

Comprehensive user guide for the BESTTEN Wi-Fi Smart Dimmer Switch (USP-DS06S/KS-7012), covering installation, setup with the Smart Life app, features, and troubleshooting.



[Smart Wall Light Switch User Manual - Installation, Features, and Setup Guide](#)

Comprehensive user manual for the BN-LINK Smart Wall Light Switch (Model KS-602H/KS-602K). Learn about product features, installation steps, app integration with Smart Life, and compatibility with Amazon Alexa, Google Assistant, and IFTTT.



[Milfra Smart Switch Installation Guide - Setup and Troubleshooting](#)

Comprehensive installation guide for the Milfra Smart Switch. Learn how to wire, connect to WiFi, and troubleshoot common issues with your smart light switch. Compatible with Alexa and Google Assistant.