

PETZL H49010

PETZL I'D S Descender/Belay Device

USER MANUAL

Brand: PETZL | Model: H49010

1. INTRODUCTION

The PETZL I'D S is a self-braking descender designed for work at height and rope access. It features a multifunction handle that allows for comfortable grip and precise control during descent. The device incorporates an anti-panic function and an auto-lock system for enhanced safety. Its robust construction, utilizing anodized aluminum and stainless steel, ensures durability and reliability in demanding environments. The I'D S is also versatile, capable of functioning as a backstop for pulley systems, facilitating quick transitions between lifting and lowering operations.

2. SAFETY INFORMATION

WARNING: Read and understand all instructions before using this equipment. Failure to follow these warnings can result in serious injury or death.

- This device is intended for use by competent persons who have received specific training in its use.
- Always inspect the device and rope for any signs of wear, damage, or deformation before each use.
- Ensure the rope diameter is compatible with the device. The I'D S is designed for ropes with a diameter between 10 mm and 11.5 mm. Using ropes outside this range may compromise safety and performance.
- The anti-panic function automatically brakes the descent if the user pulls the handle too hard. Do not attempt to bypass or disable this safety feature.
- Always maintain control of the rope and be prepared to apply additional braking force if necessary.
- Never use damaged or modified equipment.

3. SETUP AND ROPE INSTALLATION

Proper installation of the rope is crucial for the safe operation of the PETZL I'D S. Follow these steps carefully:

1. Open the side plate of the I'D S by pulling the handle all the way back. This will expose the rope

channel.

2. Observe the clear markings on the device indicating the working end of the rope and the braking end.
3. Feed the rope through the device, ensuring it follows the indicated path. The rope should pass over the cam and through the friction plate.
4. Close the side plate firmly until it snaps shut, securing the rope within the device.
5. Attach a suitable carabiner through the designated attachment point on the device to connect it to your harness or anchor point.



Figure 1: Front view of the PETZL I'D S Descender/Belay Device.



Figure 2: Hands demonstrating the correct method for loading the rope into the device.



Figure 3: An alternative perspective showing the rope properly seated within the device before closing the side plate.

4. OPERATING INSTRUCTIONS

The PETZL I'D S offers precise control for descent and can be used for various rope maneuvers.

4.1. Controlled Descent

To initiate a controlled descent, hold the braking end of the rope with one hand and slowly pull down on the multifunction handle with the other. The speed of descent is regulated by the pressure applied to the handle and the position of the braking hand. Release the handle to stop the descent.

4.2. Anti-Panic Function

The I'D S is equipped with an anti-panic function. If the handle is pulled too far or released abruptly during a descent, the device will automatically lock, stopping the descent. This feature is designed to prevent uncontrolled descents in stressful situations. To resume descent after the anti-panic function engages, release the handle completely and then re-engage it slowly.

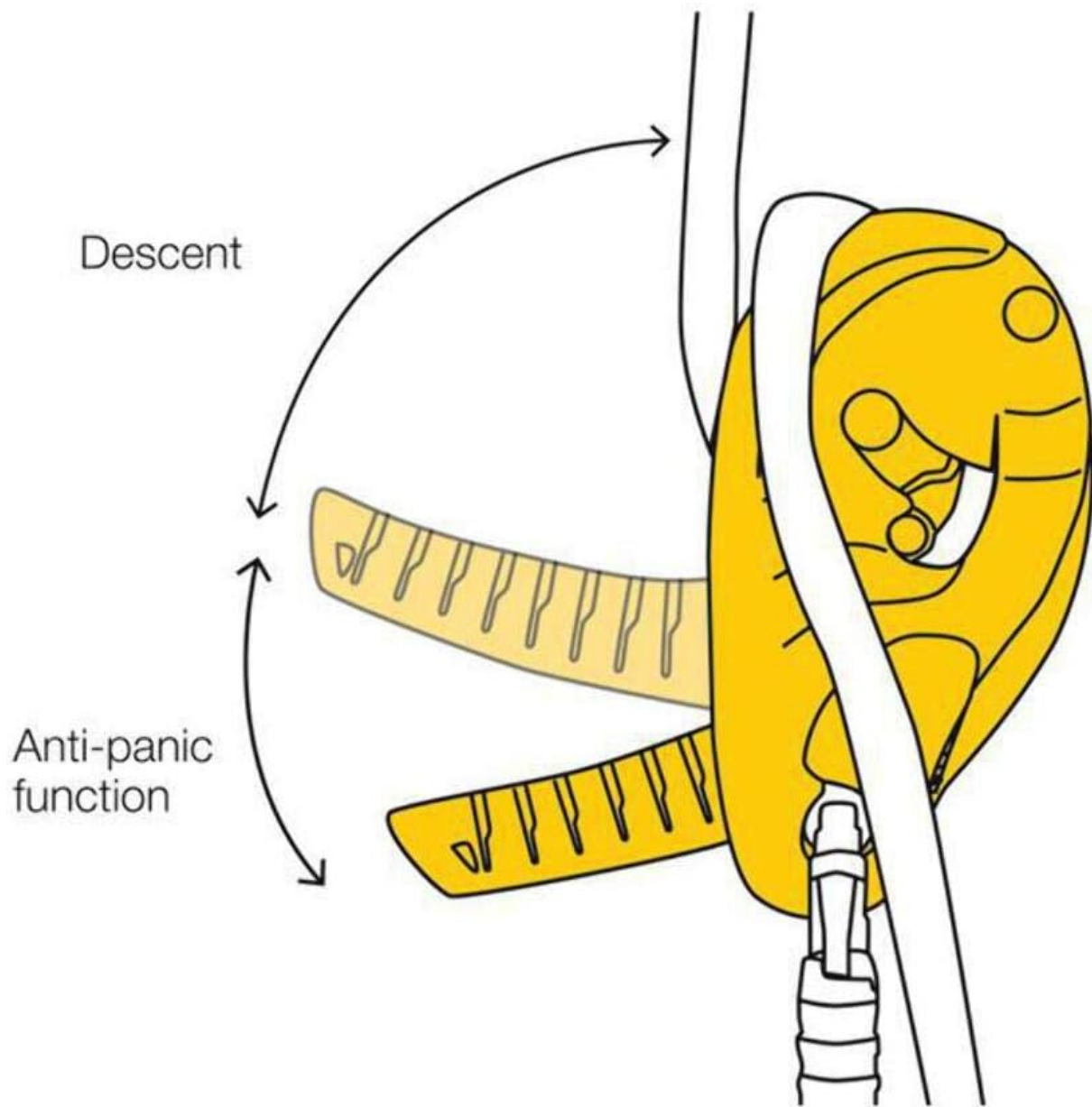


Figure 4: Diagram showing the anti-panic function, where pulling the handle too far locks the device.

4.3. Auto-Lock System

The auto-lock system allows the user to easily position themselves at a workstation without needing to tie off the device. When the handle is released, the device automatically locks the rope, holding the user in place. This provides hands-free operation for tasks at height.



AUTO-LOCK SYSTEM

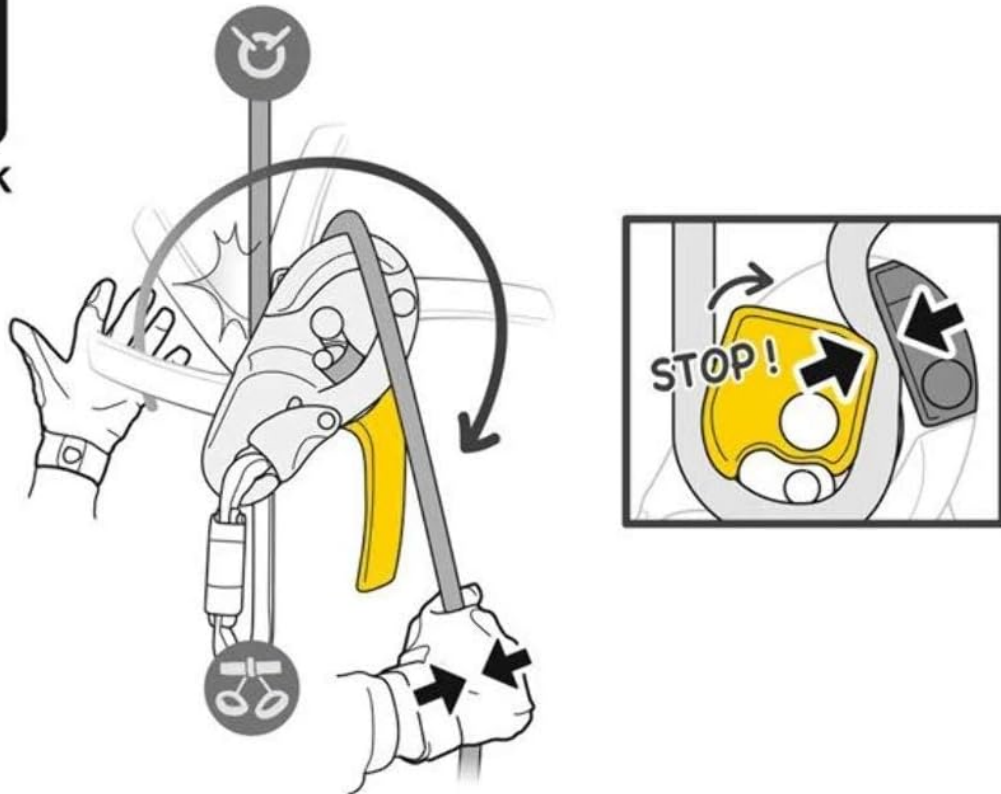


Figure 5: Diagram illustrating the auto-lock system, which engages when the handle is released.

4.4. Switching Between Lifting and Lowering

The I'D S can be used as a backstop for pulley blocks, enabling quick and efficient switching between lifting and lowering operations. Consult advanced rigging guides for specific techniques when integrating the I'D S into pulley systems.

5. MAINTENANCE

Regular maintenance ensures the longevity and safe operation of your PETZL I'D S.

- **Cleaning:** Clean the device with fresh water and mild soap. Rinse thoroughly and allow it to air dry completely before storage. Avoid using harsh chemicals or solvents.
- **Inspection:** Regularly inspect all components for wear, corrosion, cracks, or deformation. Pay close attention to the stainless steel wear plate, cam, and handle mechanism. Any significant wear or damage warrants immediate retirement of the device.
- **Storage:** Store the device in a cool, dry place, away from direct sunlight, extreme temperatures, chemicals, and sharp objects.

6. TROUBLESHOOTING

If you encounter issues with your PETZL I'D S, consider the following:

- **Rope Binding:** If the rope binds or does not feed smoothly, ensure the rope diameter is within the specified range (10-11.5 mm). Check for any debris or foreign objects in the device. Ensure the rope is not twisted or kinked.
- **Anti-Panic Function Engages Frequently:** This indicates the handle is being pulled too far. Practice controlled descent techniques to avoid over-pulling the handle.

- **Device Not Locking:** Ensure the rope is correctly installed and the side plate is fully closed. Check for excessive wear on the cam or friction surfaces.
- **Retirement:** Retire the device immediately if it has sustained a significant fall, shows signs of damage, excessive wear, or if there is any doubt about its integrity.

7. SPECIFICATIONS

Specification	Detail
Brand	PETZL
Model Name	Petzl D020AA00 I'D S DESCENDER
Model Number	H49010
Color	Yellow
Material	Anodized aluminum, stainless steel, glass fiber reinforced polyamide
Item Weight	600 Grams
Item Dimensions (LxWxH)	8.86 x 3.54 x 2.36 inches
Rope Compatibility	10 mm to 11.5 mm (static ropes)
Key Features	Self-braking, anti-panic function, auto-lock system, multifunction handle

8. WARRANTY AND SUPPORT

PETZL products are designed for durability and performance. For information regarding the warranty of your I'D S Descender/Belay Device, please refer to the official PETZL website or contact their customer support directly. Keep your proof of purchase for any warranty claims.

For technical support, product inquiries, or further assistance, please visit the official PETZL website or contact their authorized distributors.