

Manuals.plus /

› PRIME-LINE /

› Prime-Line N 7536 Sliding Closet Door Roller Kit Instruction Manual

## PRIME-LINE N 7536

# Prime-Line N 7536 Sliding Closet Door Roller Kit Instruction Manual

Model: N 7536

## 1. PRODUCT OVERVIEW

The Prime-Line N 7536 Sliding Closet Door Roller Kit is designed for repairing by-pass closet doors. This kit includes four roller assemblies, each constructed with stamped steel brackets and durable plastic wheels. Two roller assemblies are intended for installation on the front sliding panels, featuring a 1/8 inch offset. The other two assemblies are for the sliding closet door panel that operates on the rear track, characterized by a 3/8 inch offset. Each roller assembly incorporates a height-adjustment dial and 7/8 inch diameter wheels with convex (round) edges. All components are designed for top-hung, side-mount applications, ensuring smooth operation and compatibility with various doors, including Stanley models.

## 2. COMPONENTS INCLUDED

This kit contains the following parts:

- One spring-loaded Prime-Line part N 6611 top roller guide with a 3/4 inch plastic wheel and a 3/8 inch diameter nail-down style base.
- One spring-loaded Prime-Line part N 6614 top roller guide with a 7/8 inch plastic wheel and a 3/8 inch diameter nail-down style base.
- One spring-loaded N 6612 top pivot with a 1/4 inch diameter steel pivot and a 3/8 inch diameter nail-down style base.
- One adjustable Prime-Line part N 6613 bottom pivot with a 1/4 inch diameter steel pivot and a 3/8 inch diameter nail-down style base.
- All items are spring-loaded except for the bottom pivot.
- Installation fasteners are included.

The image below illustrates the two types of roller assemblies included, highlighting their respective offsets and dimensions.

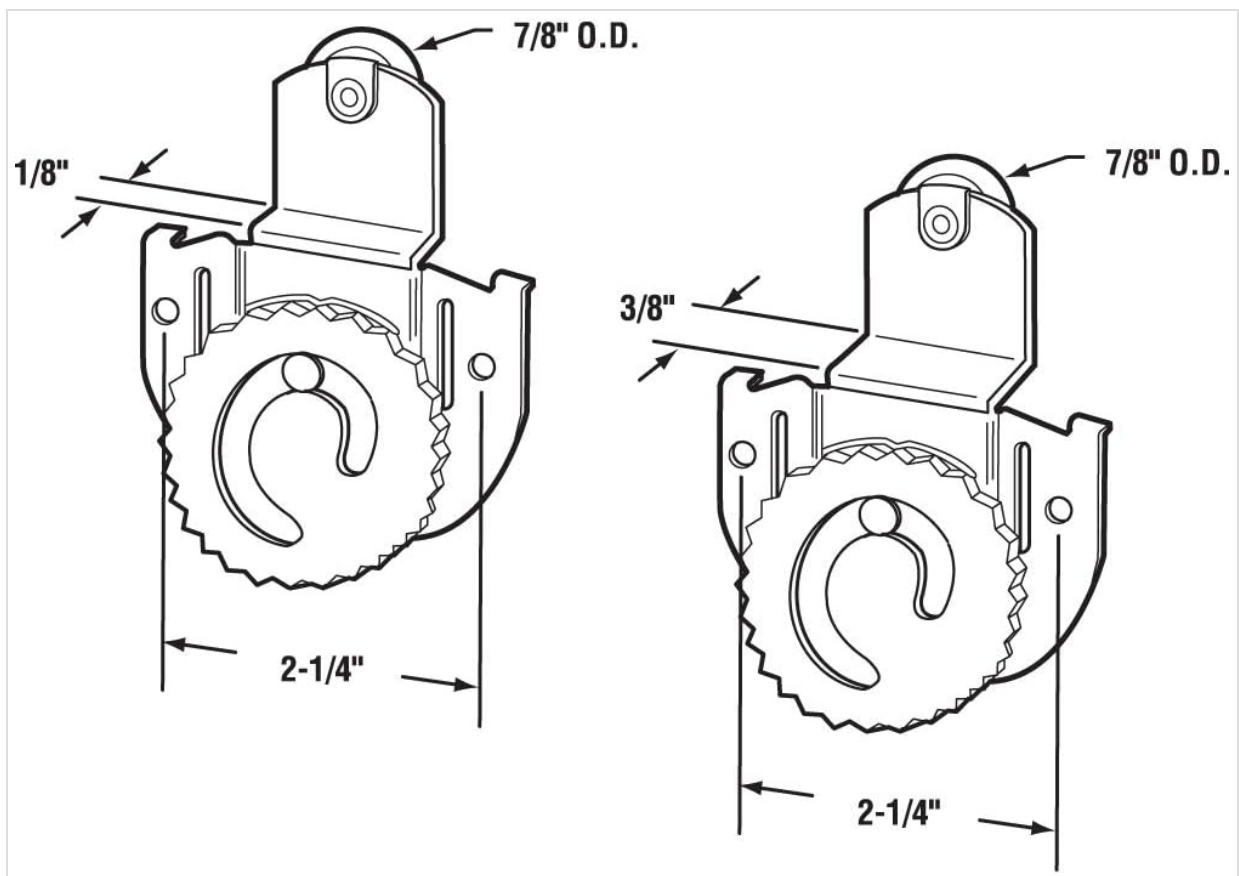


Figure 1: Roller Assemblies with Dimensions. The left roller has a 1/8 inch offset, and the right roller has a 3/8 inch offset. Both feature a 7/8 inch outer diameter wheel and a 2-1/4 inch base width.

### 3. INSTALLATION INSTRUCTIONS

Follow these steps for proper installation of the sliding closet door roller kit:

1. **Remove Existing Hardware:** Begin by removing the center guide from your closet door system. Lift the door upwards and tilt it out of the track to remove it.
2. **Install New Brackets:** Remove any old brackets from the door panels. Install the new roller assemblies (brackets) onto the door panels using the provided fasteners. Ensure the correct roller assembly (1/8 inch offset for front panel, 3/8 inch offset for rear panel) is used for each door.
3. **Level Doors:** Once the new brackets are installed, re-hang the doors. Level the doors as needed before tightening all screws securely.
4. **Check Adjustment:** Before finalizing the installation of the guide, check for proper adjustment of the rollers to ensure smooth operation.

A soft mallet may be required for certain installation steps.

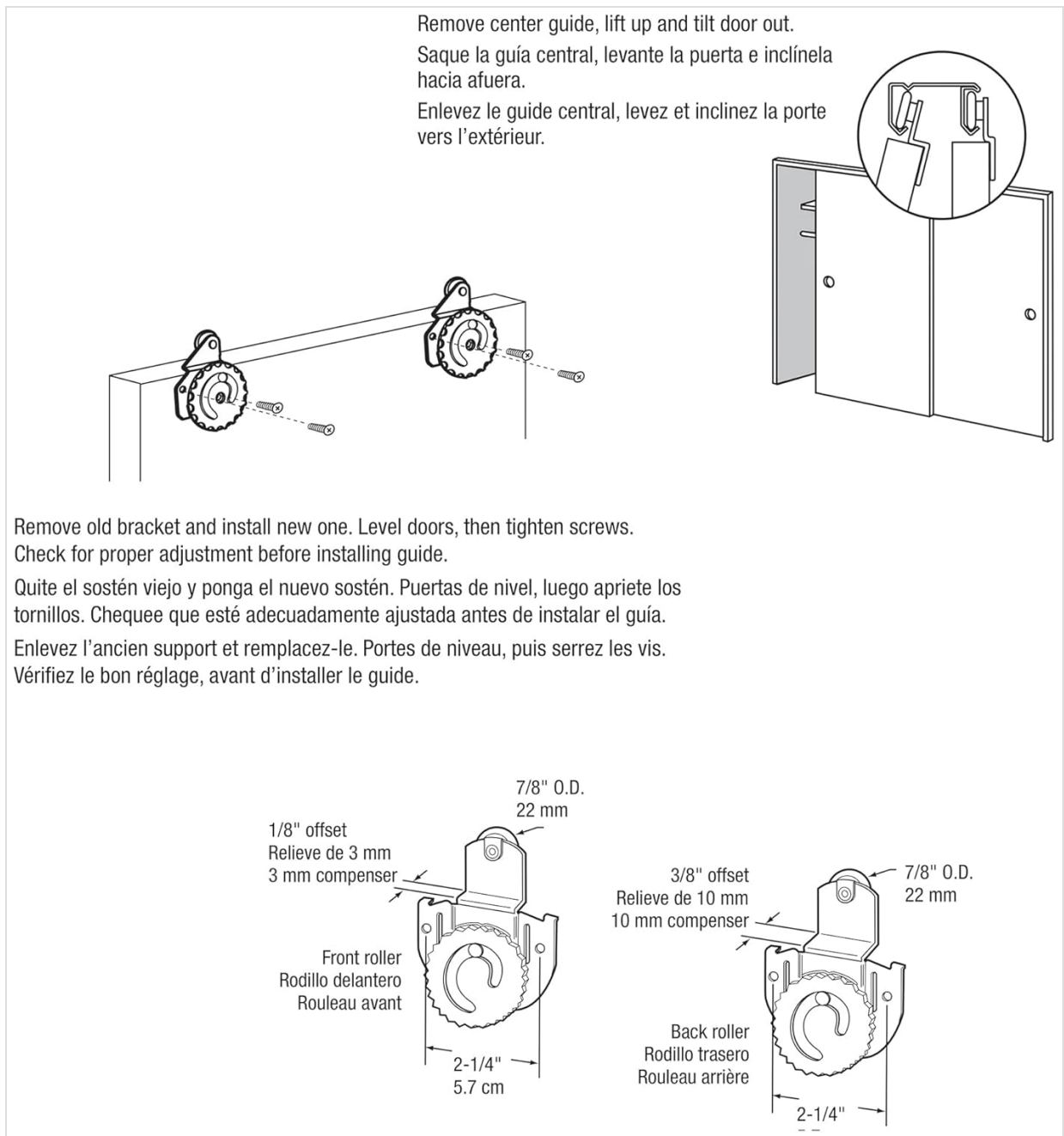


Figure 2: Installation Process. This diagram illustrates the steps for removing the old center guide, lifting and tilting the door, and installing the new roller assemblies with their respective offsets for front and back doors.

## 4. ADJUSTMENT

Each roller assembly features a height-adjustment dial. This allows for fine-tuning the door's height to achieve a perfect fit and smooth gliding action within the track. Adjust the dial as necessary to ensure the door is level and moves freely without binding.

## 5. SPECIFICATIONS

Attribute	Detail
Manufacturer	Prime-Line Products
Part Number	N 7536
Item Weight	8.4 ounces
Item Model Number	N 7536
Size	7/8 in.
Color	Zinc
Material	Alloy Steel
Item Package Quantity	1
Usage	Indoor use only
Included Components	Sliding door rollers
Assembled Diameter	7/8 Inches

## 6. MAINTENANCE

---

To ensure continued smooth operation, periodically inspect the rollers for any debris or wear. Clean the wheels and track as needed. Lubrication of the track with a silicone-based lubricant can help maintain optimal performance.

## 7. TROUBLESHOOTING

---

If the door does not slide smoothly after installation, check the following:

- Ensure the correct roller assemblies (1/8 inch offset for front, 3/8 inch offset for rear) are installed on the appropriate door panels.
- Verify that the height-adjustment dials are properly set, allowing the door to hang level and clear the floor.
- Inspect the track for obstructions or damage. Clean the track thoroughly.
- Confirm all fasteners are securely tightened.

## 8. WARRANTY AND SUPPORT

---

For warranty information or product support, please contact Prime-Line directly. The product typically includes a return policy of 30 days for refund or replacement when purchased through Amazon.