

## SWISSINNO 1 160 167

# SWISSINNO PRO SuperCat Mousetrap Instruction Manual

Model: 1 160 167

Brand: SWISSINNO

## INTRODUCTION

The SWISSINNO PRO SuperCat Mousetrap is designed for effective and hygienic mouse control in both indoor and outdoor environments. This manual provides detailed instructions for safe and optimal use of your mousetrap.

## SAFETY INFORMATION

**WARNING: Handle with care. Keep out of reach of children and pets.**

- Use the trap carefully to prevent protected species (hedgehogs, dormice, birds, etc.) or non-target animals (e.g., yellow-necked vole, wood mouse, shrew) from being lured to the bait and potentially endangered.
- Dispose of the trap and bait residues with household waste.
- The bait is food-based (1000 g/kg peanut butter).
- Designed to minimize accidental activation by pets, but caution is always advised.

## SETUP INSTRUCTIONS

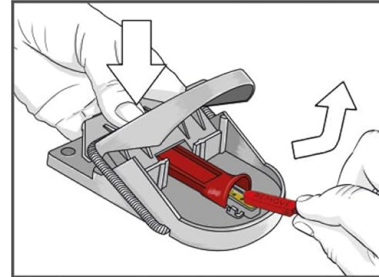
Follow these steps to prepare and set your SWISSINNO PRO SuperCat Mousetrap:

1. **Prepare the Bait:** The trap comes pre-baited with a food-based lure. To activate, push the lever down and remove the red protective cap from the bait. The trap will not lock automatically if the protective cap is not removed. The bait is refillable with SWISSINNO bait syringes.
2. **Set the Trap:** Pull the top lever back until it clicks and locks into the open position. The trap is now armed.

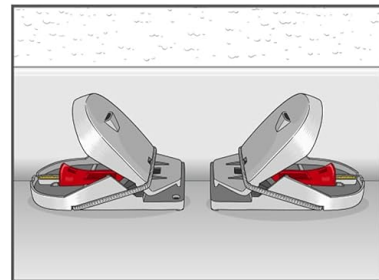
3. **Placement:** Place the armed trap by a wall with its open end sideways to the wall. Mice seldom wander into open spaces and prefer to travel along walls.

## ***How to use Mousetrap PRO SuperCat***

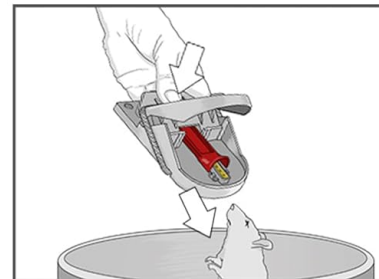
**1.** Push the lever down and remove the red protective cap from the bait. **NOTE:** The trap will not lock automatically if the protective cap is not removed !



**2.** As mice seldom wander into open spaces, place the trap by a wall with its open end sideways to the wall.



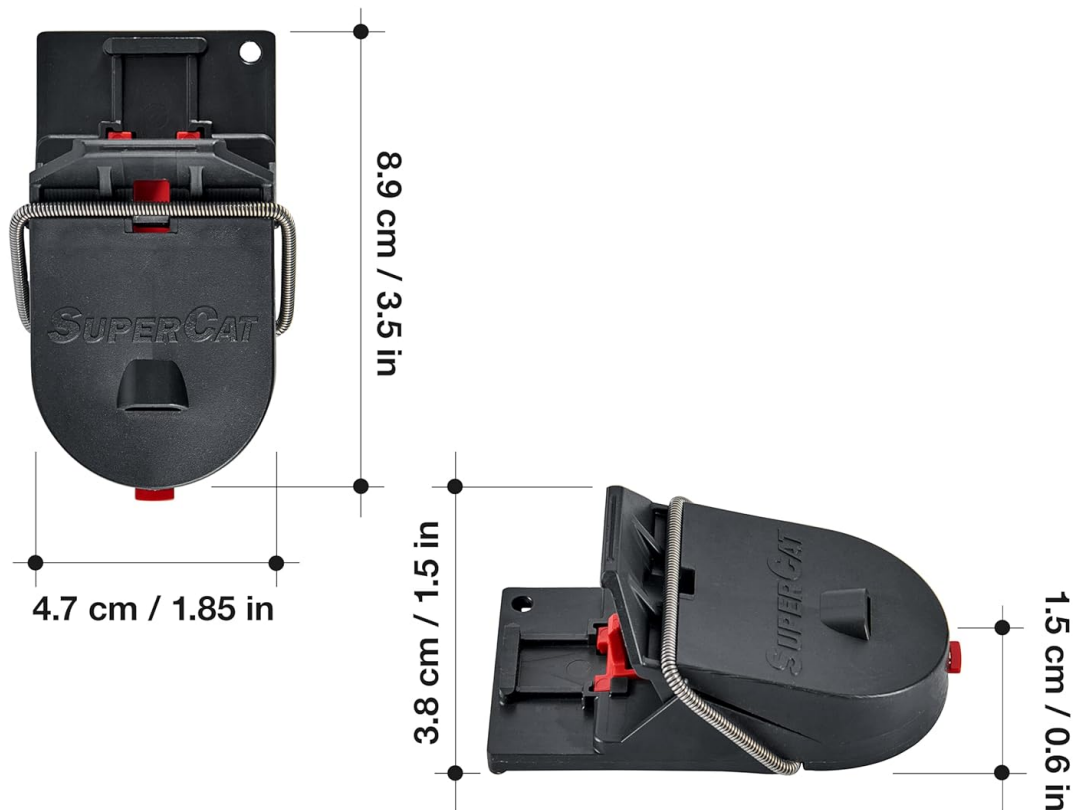
**3.** Hold the trap up and press the lever on the back to discharge the dead mouse simply and quickly without touching it.



**Figure 1:** Push the lever down and remove the red protective cap from the bait. This step is crucial for the trap to function correctly.

# Dimensions

## Mousetrap PRO SuperCat



**Figure 2:** Place the trap by a wall with its open end sideways to optimize catch rates, as mice prefer to move along edges.

### Setup Video Guide

**Video 1:** Official SWISSINNO Mouse Trap PRO SuperCat Explanation Video. This video demonstrates the correct procedure for baiting and setting the trap, as well as safe disposal.

### OPERATING INSTRUCTIONS

Once the trap is set and placed, it will activate when a mouse attempts to consume the bait. The patented easy catch system ensures the trigger activates only when the rodent is perfectly positioned for an instant catch.

1. **Check the Trap:** Regularly check the trap for activity.
2. **No-Touch Disposal:** To dispose of a caught mouse, hold the trap and press the lever on the back. This action releases the mouse quickly and hygienically without direct contact.

## ***Pest problem solved.***



**Figure 3:** Press the lever on the back of the trap for no-touch disposal of the caught mouse.

## **MAINTENANCE**

The SWISSINNO PRO SuperCat Mousetrap is designed for repeated use and durability.

- **Cleaning:** After disposal, the trap can be cleaned with warm water and soap if desired. Ensure it is completely dry before re-baiting and re-setting.
- **Re-baiting:** If the original bait is consumed or loses effectiveness, refill the bait trough with a small amount of peanut butter or a SWISSINNO bait syringe.
- **Storage:** Store traps in a cool, dry place away from children and pets when not in use.

## **TROUBLESHOOTING**

If you encounter issues with your mousetrap, consider the following:

- **Trap Not Setting:** Ensure the red protective cap has been completely removed from the bait. The trap will not lock if the cap is still in place.
- **Bait Taken, No Catch:** This can occur if the mouse is able to access the bait without fully engaging the trigger mechanism. Ensure the bait is placed securely and deeply enough to require the mouse to step onto the trigger plate. Consider using a stickier bait like peanut butter.

- **No Activity:** Re-evaluate trap placement. Mice prefer dark, secluded areas along walls. Ensure the trap is positioned correctly with the open end facing the wall. Check for alternative food sources that might be distracting the mice.
- **Accidental Triggering:** While designed to minimize this, ensure the trap is placed on a stable, flat surface. Avoid placing it where it might be bumped by people or pets.

### SPECIFICATIONS

Feature	Detail
Brand	SWISSINNO
Model Number	1 160 167
Material	Polystyrene (PS), Stainless Steel
Product Dimensions	9"L x 5"W x 3.5"H
Item Weight	1.76 ounces (0.11 Pounds)
Number of Pieces	2
Target Species	Mouse
Bait Type	Pre-baited (1000 g/kg peanut butter)

### WARRANTY AND SUPPORT

For any questions, concerns, or support regarding your SWISSINNO PRO SuperCat Mousetrap, please contact our customer service team. We are dedicated to ensuring your satisfaction and assisting with any product-related inquiries.

Contact information can typically be found on the product packaging or the official SWISSINNO website.