



Manuals.plus /

› NEEWER /

› Neewer Vision5 400W TTL for Sony HSS Outdoor Studio Flash Strobe Instruction Manual

NEEWER Vision5 400W TTL

Neewer Vision5 400W TTL Studio Flash Strobe User Manual

Model: Vision5 400W TTL

1. INTRODUCTION

Thank you for purchasing the Neewer Vision5 400W TTL Studio Flash Strobe. This professional outdoor flash unit is designed to provide powerful and versatile lighting solutions for photographers. Featuring TTL and HSS capabilities, a robust 2.4G wireless system, and a high-capacity lithium battery, it offers exceptional performance for both studio and on-location shoots. Please read this manual thoroughly before use to ensure proper operation and to maximize the lifespan of your equipment.

2. SAFETY INFORMATION

Please observe the following safety precautions to prevent damage to the product or injury to yourself and others:

- Do not disassemble or modify the unit. Repairs should only be performed by authorized service personnel.
- Keep the unit away from water, moisture, and flammable gases or liquids.
- Do not operate the unit with wet hands.
- Ensure proper ventilation during use to prevent overheating. Do not block ventilation openings.
- Avoid direct eye exposure to the flash light, as it can cause temporary vision impairment.
- Use only the specified battery and charger provided by Neewer.
- Store the unit in a cool, dry place when not in use.

3. PACKAGE CONTENTS

Verify that all items are present in your package:

- Neewer Vision5 Studio Flash
- Wireless Trigger
- 3.5mm Sync Cord
- AC Charger
- Standard Reflector
- Protective Cover
- Diffuser
- Lithium Battery

— Package Contents —



- ① VISION5 studio flash ② Wireless trigger ③ 3.5mm sync cord
 ④ AC chargers ⑤ Standard reflectors ⑥ Protective cover ⑦ Diffuser

Figure 3.1: Contents of the Neewer Vision5 package, including the strobe, wireless trigger, cables, and accessories.

4. PRODUCT OVERVIEW AND FEATURES

The Neewer Vision5 is a powerful and portable studio flash designed for professional use. Key features include:

- **400W Output:** Provides ample power for various lighting scenarios.
- **TTL and HSS:** Supports Through-The-Lens metering and High-Speed Sync up to 1/8000s for precise exposure and creative control.
- **2.4G Wireless System:** Integrated 2.4G receiver with 8 channels and 3 groups for reliable wireless control up to 80 meters.
- **Lithium Battery:** High-capacity 6000mAh, 12V battery provides up to 500 full power flashes with a fast recycle time of 0.01-2.8 seconds.
- **Bowens Mount:** Compatible with a wide range of light modifiers.
- **Modeling Lamp:** Dimmable 13W LED modeling lamp (1370 Lumens) for continuous lighting and focus assist.
- **Silent Operation:** Features temperature control and quiet operation.



Figure 4.1: Overview of the Neewer Vision5, highlighting the large capacity lithium battery (6000mAh, 12V) and control panel details.



Figure 4.2: Detail of the user-replaceable flash tube and the dimmable 13W LED modeling lamp, along with the silent operation features.



Note: Only Vision 5 studio flash strobe with 2.4G wireless trigger is included.

Built-in **2.4G** Receiver with **8** Channels

Compatible with **Sony** A9, A7III, A7RIII, A7II, A7RII, A7SII, A7, A7R, A7S, A6500, A6300, A6000, A58, A99, A77II cameras, Support USB firmware update to keep up with the latest technologies.

8 Channels [1-8]

3 Groups [A,B,C]

80m [Transmission Range]



Figure 4.3: The Neewer Vision5 with its built-in 2.4G receiver, compatible with Sony cameras via the included wireless trigger.

Bowens Mount

Compatible with multiple devices.

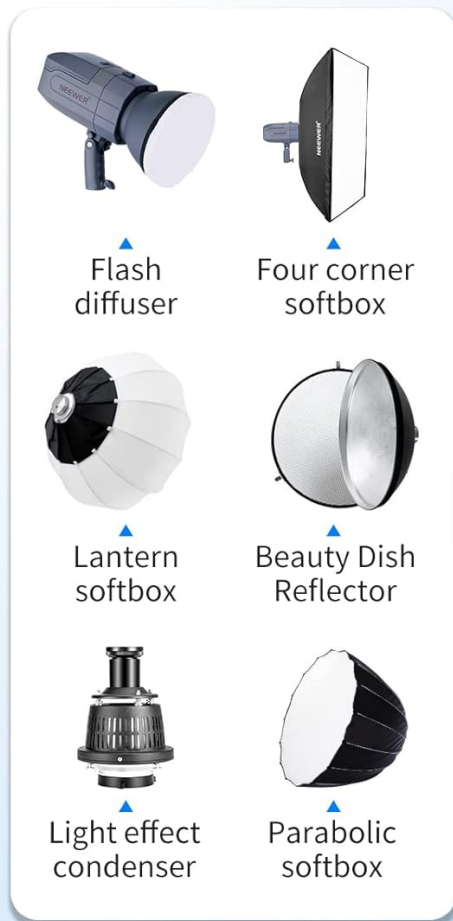


Figure 4.4: The Bowens mount on the Neewer Vision5, illustrating compatibility with various light modifiers such as diffusers, softboxes, and reflectors.

5. SETUP

5.1 Battery Installation

1. Ensure the flash unit is powered off.
2. Locate the battery compartment on the side of the unit.
3. Insert the lithium battery, ensuring it clicks securely into place.
4. To remove, press the battery locking knob and slide the battery out.



Figure 5.1: Proper method for inserting the lithium battery into the Neewer Vision5 strobe.

5.2 Attaching Light Modifiers (Bowens Mount)

1. Align the light modifier (e.g., reflector, softbox) with the Bowens mount on the front of the flash unit.
2. Insert the modifier and rotate it clockwise until it locks into place.
3. To remove, press the reflector releasing knob and rotate the modifier counter-clockwise.



Figure 5.2: Close-up view of the Bowens mount on the Neewer Vision5, showing the attachment points for light modifiers.

5.3 Mounting the Strobe

The Vision5 can be mounted on a light stand using its integrated bracket. Adjust the angle using the locking knob on the bracket. The unit also features an umbrella hole for soft light umbrellas.



Figure 5.3: The Neewer Vision5 can rotate 180 degrees on its mounting bracket for flexible positioning.



Figure 5.4: Detail of the umbrella hole design for attaching soft light umbrellas.

5.4 Wireless Trigger Setup

1. Mount the wireless trigger onto your camera's hot shoe.
2. Power on both the flash unit and the wireless trigger.
3. Set the same channel and group on both the flash and the trigger for communication. Refer to the trigger's manual for specific instructions.



Figure 5.5: The Neewer Vision5 operating with its built-in 2.4G wireless receiver, controlled by a camera-mounted trigger in a studio setting.

6. OPERATING INSTRUCTIONS

6.1 Power On/Off

Press and hold the power button on the flash unit to turn it on or off. The LCD screen will illuminate upon power-on.

6.2 Flash Modes

The Vision5 supports various flash modes:

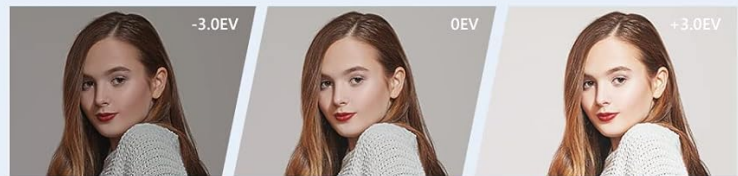
- **TTL (Through-The-Lens):** Automatic flash metering for balanced exposure.
- **Manual (M):** Allows manual adjustment of flash power output.
- **Multi (Stroboscopic):** Fires a series of rapid flashes for creative motion effects.

Use the 'Mode' button on the unit or wireless trigger to cycle through these modes.

Flash Mode

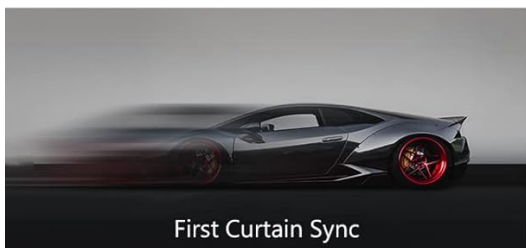


Manual flash mode M



Automatic TTL flash mode

Sync Mode



First Curtain Sync



Second Curtain Sync



Figure 6.1: Examples of flash modes (Manual, Multi, TTL) and sync modes (First Curtain, Second Curtain, High Speed Sync) available on the Neewer Vision5.

6.3 High-Speed Sync (HSS)

HSS allows the flash to synchronize with shutter speeds faster than the camera's native sync speed (up to 1/8000s). This is ideal for overpowering ambient light outdoors or using wide apertures in bright conditions. Activate HSS via the wireless trigger or flash unit settings.

6.4 Sync Modes

The Vision5 supports:

- **First Curtain Sync:** Flash fires at the beginning of the exposure.
- **Second Curtain Sync:** Flash fires at the end of the exposure, useful for capturing motion trails behind a moving subject.

6.5 Modeling Lamp

The 13W LED modeling lamp can be turned on/off and its brightness adjusted to help visualize lighting and assist with focusing. Use the dedicated button on the unit or trigger.

6.6 Wireless Control

Once paired, the wireless trigger allows remote control of flash power, mode, and other settings. Ensure the flash and trigger are set to the same channel and group.

Video 6.1: An official Neewer video demonstrating the features and usage of the Vision5 400Ws 2.4G TTL Flash Strobe, including its portability, high-speed sync, stroboscopic effect, power management, and various sync modes.

7. MAINTENANCE

7.1 Cleaning

Wipe the unit with a soft, dry cloth. For stubborn dirt, use a slightly damp cloth and then dry thoroughly. Do not use harsh chemicals or abrasive cleaners.

7.2 Battery Care

- Charge the battery fully before first use.
- Recharge the battery when the power indicator is low.
- If storing for extended periods, charge the battery to approximately 50% and recharge every 3-6 months to maintain battery health.
- Avoid exposing the battery to extreme temperatures.

7.3 Flash Tube Replacement

The flash tube is user-replaceable. If the flash tube needs replacement, contact Neewer customer support for guidance and to obtain a compatible replacement part. Follow the instructions provided with the replacement tube carefully.

8. TROUBLESHOOTING

Problem	Possible Cause	Solution
Flash not firing	Low battery; Incorrect channel/group; Trigger not properly mounted; Flash in sleep mode.	Charge battery; Verify channel/group settings; Re-mount trigger; Wake flash by pressing test button.
Inconsistent flash output	Battery low; Overheating; Interference.	Recharge battery; Allow unit to cool down; Change wireless channel.
Flash not syncing with high shutter speeds	HSS not enabled; Camera/trigger incompatibility.	Ensure HSS is activated on both flash and trigger; Check camera compatibility.
Modeling lamp not working	Lamp off; Faulty lamp.	Turn on modeling lamp; Contact support if faulty.

9. SPECIFICATIONS

Feature	Detail
Brand	NEEWER
Model Number	10094512
Compatible Mountings	Sony
Camera Flash Type	Studio
Flash Sync Speed	Up to 1/8000s (HSS)
Connectivity Technology	Radio Frequency (RF)
Wireless Technology	2.4G System
Mount Type	Bowens Mount
Included Components	Wireless Trigger, Lithium Battery
Battery Capacity	6000mAh
Recycle Time	0.01-2.8 seconds
Manufacturer	Neewer
ASIN	B07N3XWVGX

10. WARRANTY AND SUPPORT

Neewer products come with a standard manufacturer's warranty. For specific warranty terms and conditions, please refer to the warranty card included with your product or visit the official Neewer website. If you encounter any issues or require technical assistance, please contact Neewer customer support through their official channels. Please have your product model number (Vision5 400W TTL) and ASIN (B07N3XWVGX) ready when contacting support.