



Manuals.plus /

› KZYEE /

› KZYEE 1080P HD Wireless Endoscope Inspection Camera WH7-2200mAh-15M User Manual

## KZYEE WH7-2200mAh-15M

# KZYEE 1080P HD Wireless Endoscope Inspection Camera

Model: WH7-2200mAh-15M | Brand: KZYEE

## 1. INTRODUCTION

---

The KZYEE WH7 Wireless Endoscope Inspection Camera is a versatile tool designed for visual inspection in hard-to-reach areas. Featuring 1080P HD resolution, a 2.0 MP camera, and adjustable LED lights, it connects wirelessly to your smartphone or tablet for real-time viewing and recording. Its IP67 waterproof rating and semi-rigid cable make it suitable for various environments, including automotive, plumbing, and home inspections.



Figure 1: KZYEE WH7 Wireless Endoscope Inspection Camera

## 2. SAFETY INFORMATION

---

- Do not use the device in environments with flammable or explosive gases.
- Keep the device away from children.
- Ensure the camera lens is clean before use for optimal image quality.
- Do not attempt to disassemble or modify the device, as this will void the warranty and may cause damage.
- Charge the device using the provided USB cable and a compatible 5V power adapter.
- The camera probe is IP67 waterproof, but the main control unit is not. Avoid submerging the control unit in water.

## 3. PACKAGE CONTENTS

---

Verify that all items are present in the package:

- KZYEE WH7 Wireless Endoscope Unit (with semi-rigid cable and control box)
- User Manual
- USB Charging Cable

- Accessories: Hook, Magnet, Mirror



Figure 2: Endoscope package contents

## 4. PRODUCT OVERVIEW AND FEATURES

---

### 4.1. Smaller Camera Diameter

The endoscope features a small camera head with a 0.216-inch (5.5mm) diameter, allowing access to confined spaces that are difficult to reach with larger tools.

# Smaller Camera

Featured with 0.216inch diameter small camera, extending your eyes or hands access to the place hard to reach

Other



Ours




 (Note: the diameters shown in below images without screw cap)



Figure 3: Smaller camera diameter for enhanced accessibility

## 4.2. 1080P HD Resolution and Zoom Function

Equipped with a 2.0 MP camera, the device delivers 1080P HD images and videos. A zoom function allows for closer inspection of details within the viewing area.

# 1080P HD Resolution Camera & Zoom Freely

Adopts 2.0MP 1080P camera and newest zoom function, the endoscope enables to zoom in/out freely and captured clear images of more mini details, reaching the new microworld ever before.



1.18-3.94 in



Zoom Out



Zoom In

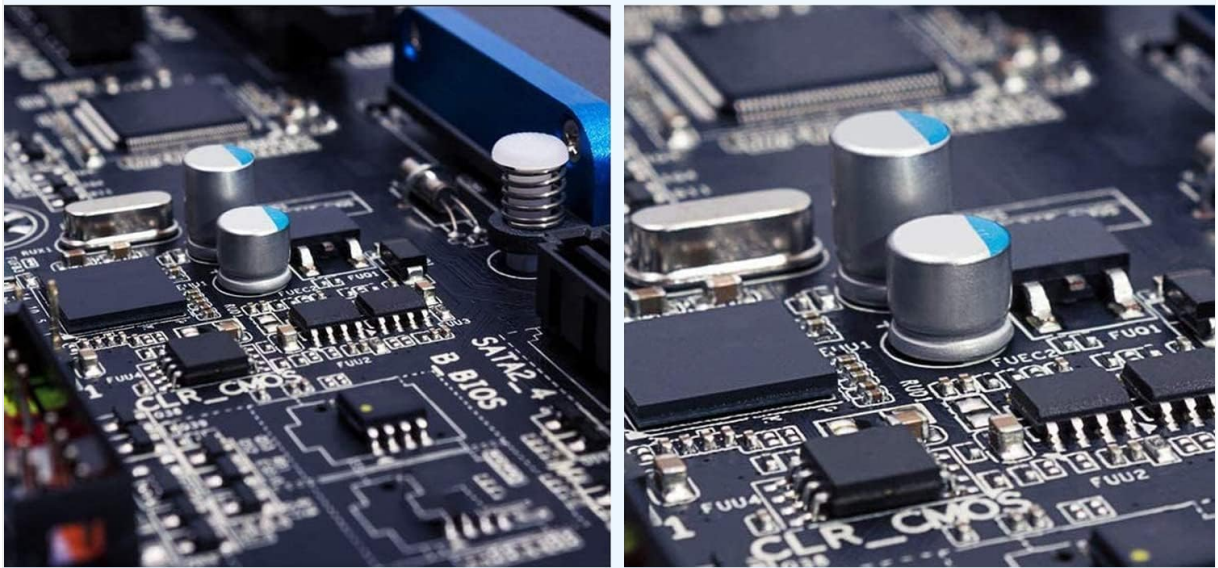


Figure 4: High-definition imaging with zoom functionality

## 4.3. High Capacity Rechargeable Li-ion Battery

The endoscope is powered by a 2200mAh Lithium-ion battery, providing an extended working time of 5-6 hours on a full charge.

# High Capacity Rechargeable Li-ion Battery

The largest battery capacity in the market, with a sustainable work up to 5-6 hours.

 **2200 mAh**  
Battery Capacity

 **5-6h**  
Working Time

**450mAh**



**Other Brand**



Figure 5: Internal view of the high-capacity battery

#### 4.4. IP67 Waterproof and Adjustable LED Lights

The camera probe is IP67 rated, making it waterproof for use in wet or submerged conditions. Six adjustable 6500K daylight LED lights provide illumination, reducing over-exposure and ensuring clear images in dark or low-light environments.



## 6500K Daylight LED Technology

Equipped with 6pcs adjustable 6500K LEDs, it greatly reduces image over-exposure, showing undistorted color effects in dark or low light conditions.



IP67 waterproof



The 6 dimmable LED lights



Figure 6: Waterproof camera with adjustable LED illumination

### 4.5. Control Box Functions and Accessories

The control box features buttons for power, Wi-Fi LED indicator, power LED indicator, zoom in/out, and a dedicated button for taking pictures or recording video. An LED brightness controller is also integrated. Three useful accessories (hook, magnet, and mirror) can be attached to the camera head for retrieving objects or viewing at different angles.

# Function Details



Figure 7: Control box functions and accessory installation

## 5. SETUP GUIDE

### 5.1. Charge the Device

Before first use, fully charge the endoscope unit using the provided USB charging cable. Connect the micro-USB end to the control box and the USB-A end to a 5V USB power adapter (not included) or a computer USB port. The Power LED will indicate charging status.

### 5.2. Download the App

Search for the free application named **"HD WIFI"** in your device's App Store (for iOS) or Google Play Store (for Android). Download and install the app.

### 5.3. Connect to Wi-Fi

1. Press and hold the Power ON/OFF button on the endoscope control box for 3-5 seconds to turn on the device. The Wi-Fi LED will illuminate.
2. On your smartphone or tablet, go to Wi-Fi settings.
3. Locate and connect to the Wi-Fi network named **"Jietion\_\*\*\*\*\*"** (the asterisks will be replaced by a unique device ID).

4. Enter the default password: "12345678".

## 5.4. Open the App and Start Inspection

Once connected to the endoscope's Wi-Fi, open the "HD WIFI" app. The camera feed should appear on your screen, ready for inspection.

Your browser does not support the video tag.

Video 1: KZYEE WH7 Wireless Endoscope Inspection Camera - Setup and Usage Guide

## 6. OPERATING INSTRUCTIONS

---

### 6.1. Taking Photos and Recording Videos

On the control box, press the dedicated "Take Picture / Record Video" button once to capture a still image. Press and hold the button to start recording video; press again to stop recording. Photos and videos will be saved directly to your connected smart device via the app.

### 6.2. Adjusting LED Lights

Use the "LED Brightness Controller" on the control box to adjust the intensity of the six LED lights around the camera lens. Rotate the dial to increase or decrease brightness as needed for optimal visibility in different lighting conditions.

### 6.3. Using Zoom Function

Press the "Zoom In" or "Zoom Out" buttons on the control box to digitally zoom the image on your smart device screen. This allows for closer examination of details without physically moving the camera closer.

### 6.4. Attaching Accessories

The included hook, magnet, and mirror accessories can be screwed onto the tip of the camera probe. These are useful for retrieving small objects, attracting metallic items, or viewing areas at a 90-degree angle.

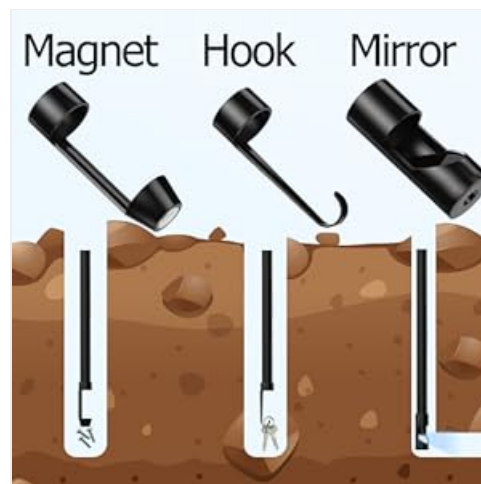


Figure 8: Endoscope accessories in use

### 6.5. Applications

The KZYEE WH7 endoscope is suitable for a wide range of applications, including:

- Automotive inspection (engine, exhaust, chassis)
- Pipeline and drain inspection
- HVAC (heating, ventilation, and air conditioning) inspection
- Home appliance repair and inspection

- Wall and ceiling cavity inspection

## Wide applications



Air conditioning Inspection



Car/Auto Maintenance



Pipeline Inspection



Home Appliance Repairs & Inspection



Wall Inspection

Figure 9: Various applications of the KZYEE endoscope

## 7. MAINTENANCE

---

- **Cleaning the Lens:** After each use, especially in dirty or wet environments, gently wipe the camera lens with a soft, dry cloth. For stubborn dirt, use a lens cleaning solution.
- **Storage:** Store the endoscope in a cool, dry place, away from direct sunlight and extreme temperatures. Coil the cable neatly to prevent kinks or damage.
- **Battery Care:** To prolong battery life, avoid fully discharging the battery frequently. If storing for an extended period, charge the battery to about 50% every three months.
- **General Care:** Keep the control unit dry and clean. Avoid dropping the device or subjecting it to strong impacts.

## 8. TROUBLESHOOTING

---

Problem	Possible Cause	Solution
No image on screen / App not connecting	Wi-Fi not connected; Device not powered on; Low battery; Incorrect app.	Ensure device is powered on and Wi-Fi LED is lit. Connect to the correct Wi-Fi network (Jietion_*****) with password '12345678'. Charge the device. Use the 'HD WIFI' app.
Image is blurry or unclear	Camera lens is dirty; Object is outside focal range; Insufficient lighting.	Clean the camera lens. Ensure the object is within the optimal focal distance (1.18-3.94 inches). Adjust LED brightness.
Device not charging	Faulty USB cable or adapter; Charging port issue.	Try a different USB cable and power adapter. Ensure the cable is securely connected.
Short battery life	Battery not fully charged; Aging battery.	Ensure the device is fully charged before use. If battery life significantly degrades, contact support.

## 9. SPECIFICATIONS

Feature	Detail
Model	WH7-2200mAh-15M
Camera Resolution	1080P (2.0 MP)
Camera Diameter	5.5mm (0.216 inches)
Cable Length	50FT (15M)
Waterproof Rating	IP67 (for camera probe)
Battery Capacity	2200mAh Lithium Ion
Working Time	5-6 hours
LED Lights	6 adjustable 6500K Daylight LEDs
Connectivity	Wi-Fi (for Android 2.3+ and iOS 6.0+ smartphones/tablets)
Focal Distance	1.18-3.94 inches (3-10 cm)

## 10. WARRANTY AND SUPPORT

For warranty information, technical support, or service inquiries, please refer to the contact details provided with your product packaging or visit the official KZYEE website. Keep your purchase receipt as proof of purchase for warranty claims.