

Manuals.plus /

› **Picture Hang Solutions** /

› Picture Hang Solutions T-Screw Security Picture Hanger Wrenches (15 Pack) Instruction Manual

## Picture Hang Solutions SEC-43SHXV

# Picture Hang Solutions T-Screw Security Picture Hanger Wrenches (15 Pack) Instruction Manual

Model: SEC-43SHXV

## INTRODUCTION

This manual provides instructions for the proper use of Picture Hang Solutions T-Screw Security Picture Hanger Wrenches. These wrenches are designed to operate T-Head security screws, which are commonly used with picture security hardware to secure or release art and frames from walls.

The 15-pack ensures you have multiple wrenches available for various installations or as replacements.

## PRODUCT OVERVIEW

The T-Screw Security Picture Hanger Wrench is a specialized tool crafted from alloy steel, featuring a hardened tip designed to engage with T-Head security screws. Its slim profile allows it to reach up to 2 inches behind a framed item, facilitating discreet operation of security hardware.



**Image 1:** A single T-Screw Security Picture Hanger Wrench, showing its hardened tip and overall design. The word "HARDENED" is visible on the shaft.



**Image 2:** Three T-Screw Security Picture Hanger Wrenches, illustrating the quantity provided in a pack and their consistent design. One wrench is shown from the side, highlighting its slim profile.

## SETUP AND INSTALLATION OF SECURITY HARDWARE

The T-Screw wrench is used in conjunction with security hanging hardware. The following steps outline a typical installation process for security picture hanging systems, where the wrench will be used to secure the final piece.

## 3 Things to Consider

### Hanging Hardware

This refers to the picture hanging hardware that is attached to the back of the frame. Most frames come with a hook, hanger or wire already attached to the piece. Knowing what you have attached to the art will help determine the proper wall hook.

Security hardware can be used with wood frames that have cleats or other hangers and also metal frames using the frame itself as the part of the system.

### Weight Capacity

**How heavy is the item that you're going to hang?**

Different types of picture hanging hardware have different amounts of holding power. The rule of thumb is to select a hook with a weight capacity of at least 1-3 times the weight of the item you are hanging.

Security Kits can support up to 15 lbs.

### Wall Type

**What type of wall are you going to hang it on?**

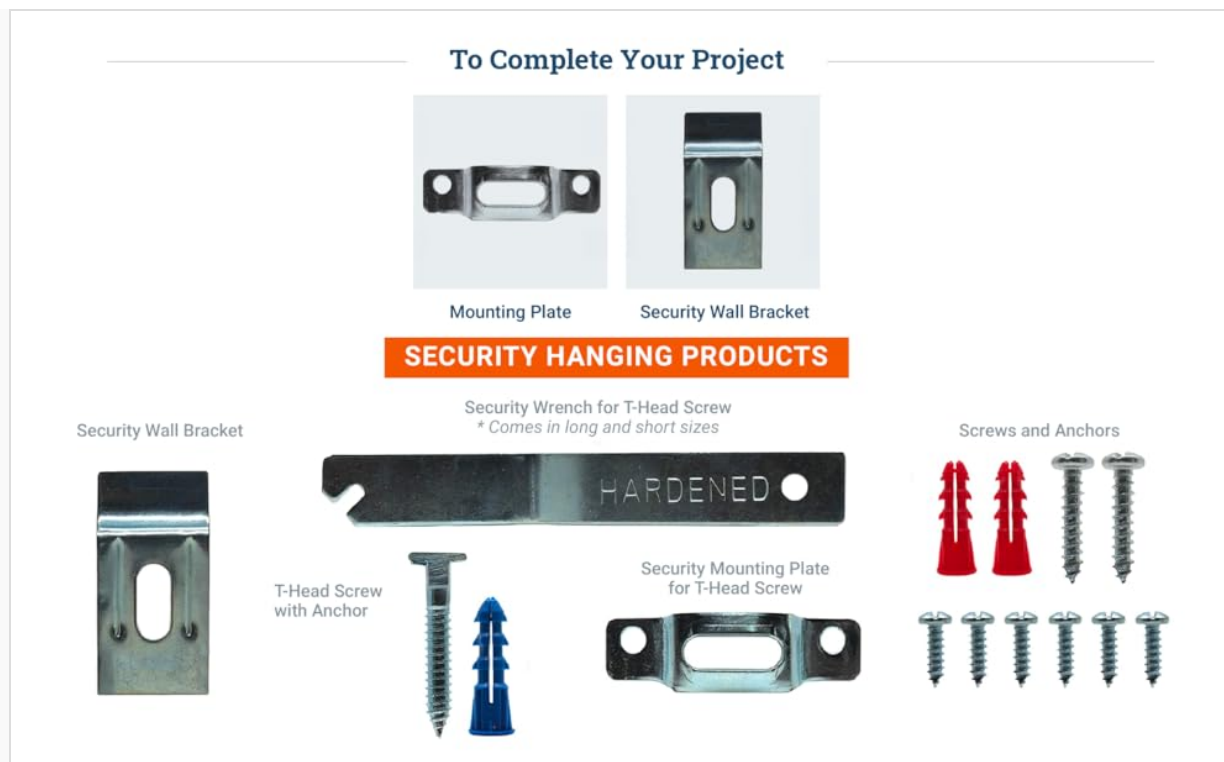
Wall types include drywall, plaster, wood panel, brick, and concrete wall. Security hangers can be used on plaster walls, drywall or wood panel walls.

The kits, as provided, work with drywall or wood paneled walls.

**Image 3:** A visual guide detailing the five steps for setting up security picture hanging hardware. This includes marking and drilling holes, attaching brackets, hanging the frame to mark the T-head screw position, drilling for and installing the T-head screw, and finally using the security wrench to lock the frame.

1. **Mark, Measure, and Drill Holes:** Determine the desired position for your artwork. Mark and drill pilot holes for the mounting plates or brackets on the wall.
2. **Attach Brackets to the Wall:** Secure the wall brackets or mounting plates to the wall using appropriate screws and anchors.
3. **Hang Frame and Mark T-Head Screw Position:** Temporarily hang the frame on the installed wall brackets. Mark the exact position for the T-Head screw on the bottom rail of the frame.
4. **Drill Hole and Install T-Head Screw:** Remove the frame. Drill a pilot hole at the marked position on the frame's bottom rail and install the T-Head screw.
5. **Hang Frame and Lock with Wrench:** Hang the frame back onto the wall brackets. Use the T-Screw Security Picture Hanger Wrench to engage and turn the T-Head screw, locking the frame securely to the wall.

**Considerations for Installation:**



**Image 4:** An infographic detailing three key considerations for picture hanging: the type of hanging hardware on the frame, the weight capacity of the chosen security system (up to 15 lbs), and the compatibility with different wall types (drywall or wood paneled walls).

- **Hanging Hardware:** Ensure the security system is compatible with the existing hardware on your frame (hooks, hangers, wire).
- **Weight Capacity:** Security kits typically support items up to 15 lbs. Always select hardware with a weight capacity at least 1-3 times the weight of the item being hung.
- **Wall Type:** The provided security kits and wrenches are suitable for drywall or wood paneled walls.

## OPERATING THE T-SCREW WRENCH

The T-Screw wrench is used to engage and turn the T-Head security screw, which secures the artwork to the wall or releases it. The wrench's design allows it to reach behind the frame for discreet operation.

### Locking the Artwork

To lock the artwork in place, insert the tip of the T-Screw wrench into the T-Head screw located on the bottom rail of the frame. Turn the wrench to your **left** until the frame is securely fastened against the wall.

**Locked**

**Unlocked**



**To lock the art,  
turn to your left**

**Image 5:** Illustration demonstrating how to lock the artwork. The T-screw wrench is shown engaging a T-head screw, with an arrow indicating a leftward turn to transition from an 'Unlocked' to a 'Locked' position.

#### **Unlocking the Artwork**

To unlock and remove the artwork, insert the tip of the T-Screw wrench into the T-Head screw. Turn the wrench to your **right** to release the security mechanism, allowing the frame to be lifted from the wall.

**Locked**

**Unlocked**



**To unlock the art,  
turn to your right**

**Image 6:** Illustration demonstrating how to unlock the artwork. The T-screw wrench is shown engaging a T-head screw,

with an arrow indicating a rightward turn to transition from a 'Locked' to an 'Unlocked' position.



**Image 7:** A close-up view of a hand using the T-Screw wrench to operate a hidden security feature behind a picture frame, demonstrating its discreet application.

## MAINTENANCE

The T-Screw Security Picture Hanger Wrenches are made from durable alloy steel and require minimal maintenance.

- **Cleaning:** Wipe the wrenches with a dry cloth to remove any dust or debris. Avoid using harsh chemicals or abrasive cleaners.
- **Storage:** Store the wrenches in a dry place to prevent rust. Keep them organized to ensure easy access when needed.
- **Inspection:** Periodically inspect the tip of the wrench for any signs of wear or damage. While designed to be hardened, excessive force or misuse can cause deformation. Replace if significant wear is observed to ensure proper engagement with T-Head screws.

## TROUBLESHOOTING

If you encounter issues while using the T-Screw Security Picture Hanger Wrenches, consider the following:

- **Wrench does not engage T-Head screw:**
  - Ensure the wrench is fully inserted into the T-Head screw.
  - Verify that the T-Head screw is not obstructed by the frame or wall.
  - Check if the T-Head screw or wrench tip is damaged or worn.
- **Difficulty turning the T-Head screw:**
  - Apply steady, firm pressure. Avoid excessive force that could strip the screw or damage the wrench.

- Ensure the frame is properly seated on the wall brackets before attempting to lock or unlock. Misalignment can create resistance.

- **Scratches on the wall or frame:**

- Exercise caution when inserting and turning the wrench.
- Consider placing a thin protective material (e.g., painter's tape) on the wall or frame edge where the wrench might make contact, especially if clearance is minimal.

## SPECIFICATIONS

<b>Model Number</b>	SEC-43SHXV
<b>Brand</b>	Picture Hang Solutions
<b>Material</b>	Alloy Steel
<b>Color</b>	Grey
<b>Item Length</b>	2 Inches
<b>Item Weight (per wrench)</b>	Approximately 0.09 lbs (1.35 lbs / 15 wrenches)
<b>Package Quantity</b>	15 Wrenches
<b>Operation Mode</b>	Mechanical