

Paladone PP4938NN

Paladone Nintendo Super Mario Bros Lamp Instruction Manual

Model: PP4938NN

INTRODUCTION

Thank you for purchasing the Paladone Nintendo Super Mario Bros Lamp. This lamp is designed to bring a retro gaming aesthetic to your space while providing ambient lighting. This manual provides essential information for the safe and proper use of your lamp.



Image: The Paladone Nintendo Super Mario Bros Lamp, featuring a Super Mario level design on the lampshade and an NES controller base.

SETUP INSTRUCTIONS

Follow these steps to set up your Paladone Nintendo Super Mario Bros Lamp:

1. **Unpack:** Carefully remove all components from the packaging. Ensure the lamp, lampshade, and USB cable are present.
2. **Placement:** Place the lamp on a stable, flat surface.
3. **Connect Power:** Insert the Micro USB end of the included cable into the port on the NES controller base. Connect the standard USB-A end to a compatible 5V 500mA USB power source (e.g., a computer USB port, a USB wall adapter, or a power bank). **Note: A wall adapter is NOT included. Using an incompatible power source may damage the lamp.**

60" Micro USB Included

Wall Adapter **NOT** Included.



Image: Close-up of the NES controller base showing the Micro USB input port and the connected USB cable. Text on the image indicates "60" Micro USB Included. Wall Adapter NOT Included."

OPERATING INSTRUCTIONS

The lamp is controlled using the integrated NES controller replica base.

- **Power On:** Press the **A button** on the NES controller to turn the lamp on.
- **Power Off:** Press the **B button** on the NES controller to turn the lamp off.
- **Adjust Brightness (Dimming):** Use the **Directional Pad (D-Pad)** to cycle through the three available brightness settings. Pressing **Up** or **Down** on the D-Pad will adjust the light intensity.

NES CONTROLLER SWITCH

3 DIMMING OPTIONS.

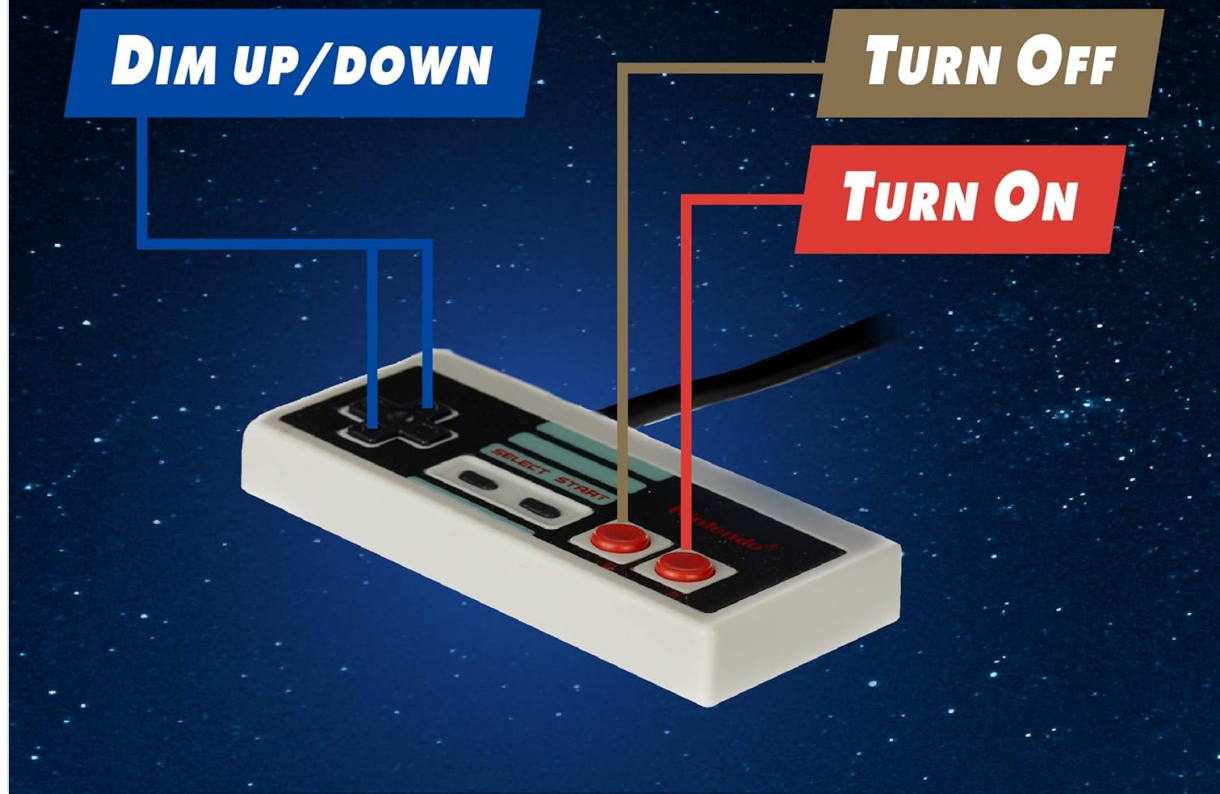


Image: Diagram of the NES controller indicating that the 'A' button turns the lamp on, the 'B' button turns it off, and the D-Pad dims the light up or down. There are three dimming options.

Product Demonstration Video

Your browser does not support the video tag.

Video: A short demonstration showing the Paladone Nintendo Super Mario Bros Lamp being plugged in, turned on, turned off, and its brightness adjusted using the NES controller base.

MAINTENANCE

To ensure the longevity and proper functioning of your lamp:

- **Cleaning:** Wipe the lamp and controller base with a soft, dry cloth. Do not use abrasive cleaners or liquids, as they may damage the finish or electronic components.
- **Storage:** When not in use for extended periods, store the lamp in a cool, dry place away from direct sunlight.
- **LEDs:** The lamp uses integrated LED lighting which is not user-replaceable.

TROUBLESHOOTING

If you encounter issues with your lamp, refer to the following common problems and solutions:

- **Lamp does not turn on:**
 - Ensure the USB cable is securely connected to both the lamp base and the power source.
 - Verify that the USB power source is active and providing 5V 500mA. Try a different USB port or adapter.
 - Press the 'A' button on the controller to turn the lamp on.
- **Lamp is too dim:**
 - Use the D-Pad on the controller to cycle through the brightness settings. Ensure it is set to the highest level.
 - Note that this lamp is designed for ambient lighting and may not be suitable as a primary light source for tasks like reading.
- **LEDs burn out prematurely:**
 - Ensure you are using a 5V 500mA USB charger. Using a charger with higher voltage or amperage than specified can damage the internal LEDs.
 - Avoid leaving the lamp on for excessively long periods if not necessary, to prolong LED lifespan.

SPECIFICATIONS

Model Number	PP4938NN
Brand	Paladone
Product Dimensions	8.03"D x 6.3"W x 10.24"H (20.4cm D x 16cm W x 26cm H)
Item Weight	0.25 Kilograms (8.8 ounces)
Material	Plastic
Light Source Type	LED
Wattage	2.5 watts
Voltage	5 Volts
Power Source	Corded Electric (USB)
Control Method	Integrated NES Controller (Remote-like function)
Assembly Required	No

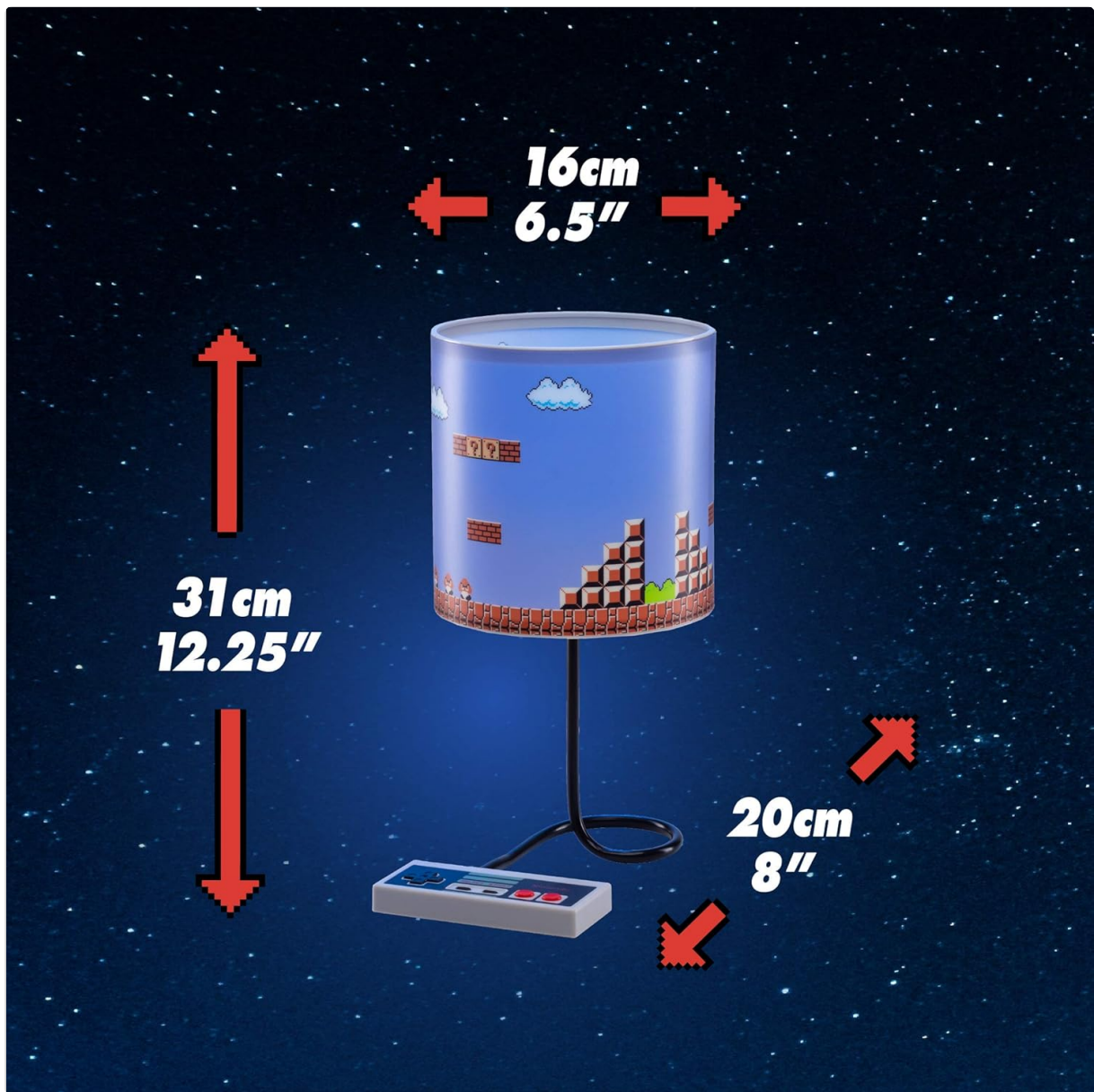


Image: The Paladone Nintendo Super Mario Bros Lamp with arrows and measurements indicating its height (31cm / 12.25"), lampshade width (16cm / 6.5"), and base depth (20cm / 8").

WARRANTY AND SUPPORT

For warranty information or technical support, please refer to the contact details provided on the product packaging or visit the official Paladone website. Keep your proof of purchase for any warranty claims.

Paladone Official Website: [Paladone Store on Amazon](#)