

ORICO 2 Bay Cloner

ORICO USB 3.0 to SATA Dual Bay External Hard Drive Docking Station

USER MANUAL

1. INTRODUCTION

This manual provides instructions for the ORICO USB 3.0 to SATA Dual Bay External Hard Drive Docking Station. This device is designed to support two 2.5-inch or 3.5-inch SATA I/II/III HDD/SSD hard drives simultaneously, offering data transfer via USB 3.0 and an offline clone/duplicator function without requiring a computer connection.

Key features include:

- Supports up to 2x 16TB hard drives (total 32TB capacity).
- USB 3.0 SuperSpeed interface with transfer speeds up to 5Gbps, backward compatible with USB 2.0 and USB 1.1.
- Standalone offline clone/duplicator function with LED progress indicators.
- Tool-free installation and hot-swappable design.
- Compatible with Windows XP/Vista/7/8/8.1/10, Linux, and Mac OS 9.1/10.2 or higher.

2. PACKAGE CONTENTS

Please verify that all items are present in the package:

- 1x ORICO Dual Bay Hard Drive Docking Station
- 1x USB 3.0 Data Cable
- 1x Power Adapter
- 1x User Manual

3. PRODUCT OVERVIEW

The ORICO Dual Bay Docking Station features two vertical slots for hard drives, a power button, a clone button, and LED indicators for power and cloning progress. The rear panel includes a DC power input and a USB 3.0 port for computer connection.



Figure 3.1: Front view of the ORICO Dual Bay Docking Station with two hard drives. The drives are inserted vertically into the two bays. For more information on the Western Digital drives shown, visit <http://qr.wdc.com/wdblue>.

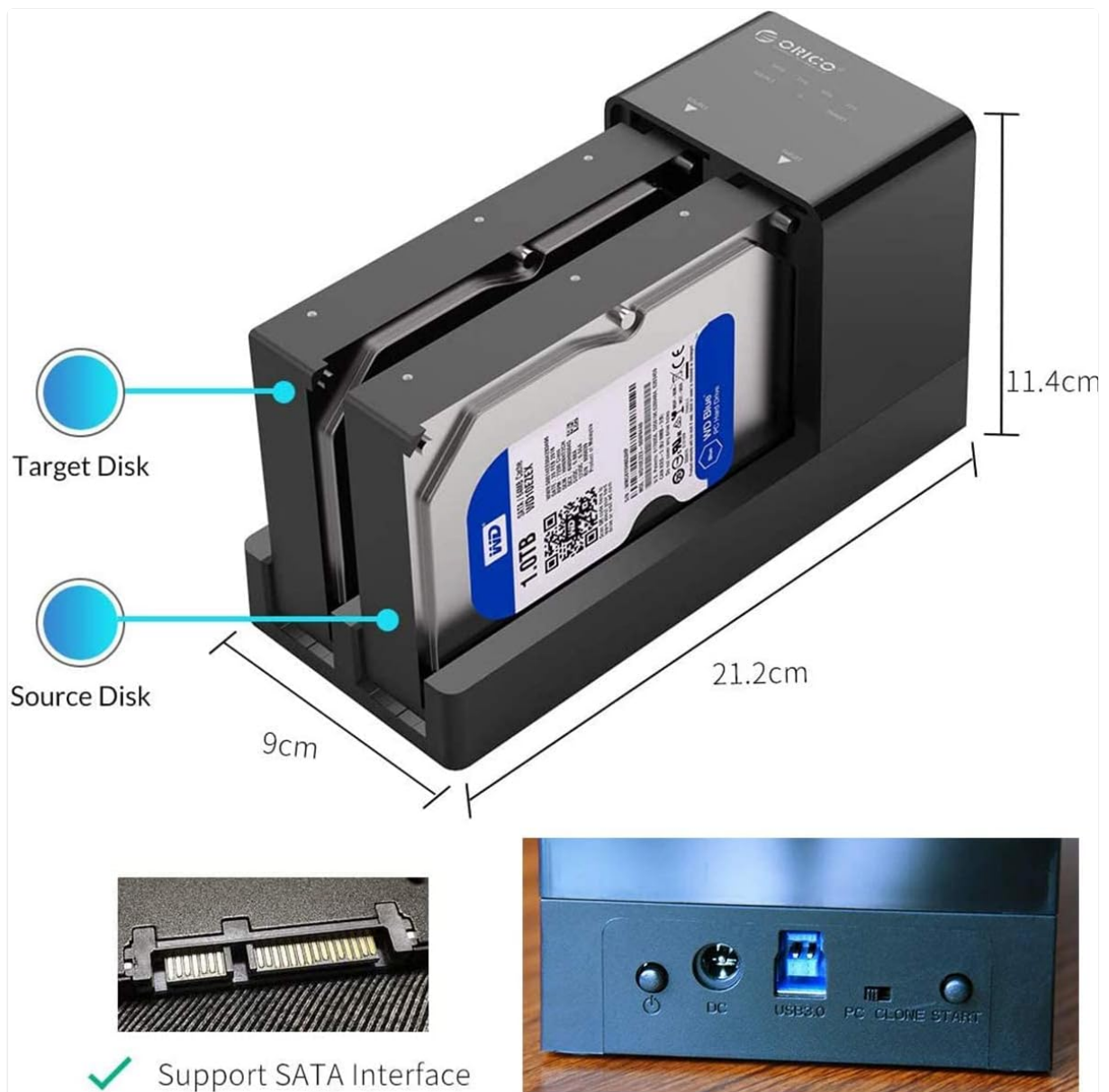


Figure 3.2: Rear view of the docking station illustrating its dimensions (approximately 21.2cm length, 9cm width, 11.4cm height) and the available ports: DC power input, USB 3.0 port, and the 'PC Clone Start' button. It also highlights the SATA interface support. For more information on the Western Digital drives shown, visit <http://qr.wdc.com/wdblue>.

4. SETUP

4.1 Hardware Installation

1. **Insert Hard Drives:** Gently slide your 2.5-inch or 3.5-inch SATA HDD/SSD into the drive bays. Ensure the drive is fully seated in the SATA connector. The tool-free design allows for easy insertion and removal.

Vertical opening heat-dissipation

Vertical opening design, easy to dismount, good heat-dissipation performance. It adopts high quality ABS material, solid and durable, matte surface process, elegant and delicate.



Figure 4.1: Demonstrates the tool-free installation process, where a hard drive is easily inserted into the docking station. For more information on the Western Digital drives shown, visit <http://qr.wdc.com/wdblue>.

2. **Connect Power:** Connect the provided power adapter to the DC IN port on the back of the docking station, then plug it into a power outlet.
3. **Connect to Computer (Optional):** If using the docking station with a computer, connect the USB 3.0 data cable from the docking station's USB 3.0 port to an available USB port on your computer.

4.2 System Requirements

The docking station is compatible with the following operating systems:

- Windows XP / VISTA / 7 / 8 / 8.1 / 10
- Linux
- Mac OS 9.1 / 10.2 or higher

5. OPERATING INSTRUCTIONS

5.1 Connecting to a Computer

1. Ensure hard drives are properly inserted and the power adapter is connected.
2. Connect the USB 3.0 cable to your computer.

3. Power on the docking station using the power button.
4. Your operating system should automatically detect the drives. No additional drivers are typically required.

A mass capacity HDD enclosure

Connecting to PC, it can read several disks simultaneously, support up to 10TB single disk, enlarge your computer with the idle disks.



Figure 5.1: The ORICO docking station connected to a laptop via USB, demonstrating its compatibility with Windows, Linux, and Mac operating systems for reading multiple disks simultaneously.

5.2 Offline Clone Function

The offline clone function allows you to duplicate a source hard drive to a target hard drive without connecting to a computer.

1. **Prepare Drives:** Insert the **Source Disk** (the drive you want to copy from) into the 'SOURCE' bay and the **Target Disk** (the drive you want to copy to) into the 'TARGET' bay. Ensure the target disk has equal or greater capacity than the source disk.
2. **Disconnect from PC:** Ensure the USB cable is disconnected from your computer. The docking station must be in standalone mode for cloning.
3. **Power On:** Connect the power adapter and turn on the docking station.
4. **Initiate Clone:** Press and hold the 'PC Clone Start' button for approximately 3-5 seconds until the clone progress LEDs begin to flash.
5. **Monitor Progress:** The LED indicators (25%, 50%, 75%, 100%) will illuminate sequentially to show

the cloning progress.

6. **Completion:** Once all LEDs are solid, the cloning process is complete. You can then power off the device and remove the drives.

One-Touch Offline Clone

No computer needed, more convenient and efficient

Offline Clone Step:

1. power on, insert source and target disk
2. Press button
3. Automatically cope

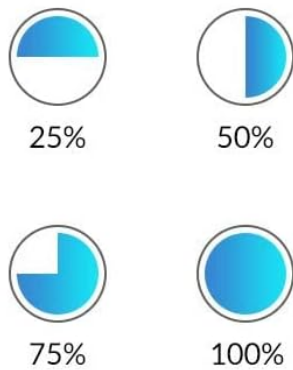


Figure 5.2: Illustrates the three steps for an offline clone: 1. Power on, insert source and target disk. 2. Press button. 3. Automatically copy. Progress indicators (25%, 50%, 75%, 100%) are shown. For more information on the Western Digital drives shown, visit <http://qr.wdc.com/wdblue>.

Important Note: All data on the target disk will be overwritten during the cloning process. Back up any important data on the target disk before proceeding.

6. MAINTENANCE

To ensure optimal performance and longevity of your docking station:

- **Cleaning:** Use a soft, dry cloth to clean the exterior. Avoid liquid cleaners or solvents.
- **Heat Dissipation:** The vertical opening design aids in heat dissipation. Ensure the device is placed in a well-ventilated area to prevent overheating, especially during extended use or cloning operations.

Plug and play, tool-free installation

Tool-free design, plug and play, hot-swappable, easy to handle.



Figure 6.1: Illustrates the vertical opening design of the docking station, which facilitates efficient heat dissipation to maintain optimal operating temperatures. For more information on the Western Digital drives shown, visit <http://qr.wdc.com/wdblue>.

- **Storage:** When not in use, store the docking station in a cool, dry place away from direct sunlight and extreme temperatures.

7. TROUBLESHOOTING

If you encounter issues with your ORICO docking station, refer to the following common solutions:

- **Drives Not Recognized by Computer:**
 - Ensure the docking station is powered on and the USB 3.0 cable is securely connected to both the docking station and your computer.
 - Verify that the hard drives are properly seated in their bays.
 - Try connecting the docking station to a different USB port on your computer.
 - If using a USB hub, try connecting the docking station directly to the computer's USB port, as some hubs may not provide sufficient power or compatibility.
 - Check Disk Management (Windows) or Disk Utility (Mac) to see if the drives are detected but uninitialized or unformatted.
- **Offline Clone Fails or Does Not Start:**

- Ensure the USB cable is disconnected from the computer before initiating the clone.
 - Verify that the target disk has equal or greater capacity than the source disk.
 - Confirm that the source and target drives are correctly inserted into their respective bays.
 - Press and hold the 'PC Clone Start' button for the required duration (3-5 seconds) until the LEDs flash.
- **Drives Go to Sleep and Do Not Wake Up:**
 - Some operating systems or power management settings may cause drives to enter a deep sleep state. Try power cycling the docking station (turn off, then on again) to re-initialize the drives.
 - Consider adjusting power management settings in your operating system to prevent drives from sleeping too aggressively.
- **Intermittent Disconnections or Instability:**
 - Ensure the power adapter is providing stable power. Verify the power adapter specifications match the device requirements.
 - If using high-power consumption drives (e.g., certain 3.5-inch HDDs), ensure the power supply is adequate.
 - Try a different USB 3.0 cable to rule out cable issues.

8. SPECIFICATIONS

Model Number	2 Bay Cloner
Supported Drives	2.5-inch / 3.5-inch SATA I/II/III HDD/SSD
Max Capacity	Up to 32TB (2x 16TB)
Interface	USB 3.0 (5Gbps), backward compatible with USB 2.0/1.1
Offline Clone Function	Supported
Material	Aluminum
Dimensions	8.35 x 3.54 x 4.49 inches (21.2 x 9 x 11.4 cm)
Item Weight	1.83 pounds (0.83 kg)
Compatible OS	Windows, Linux, Mac OS

9. WARRANTY AND SUPPORT

ORICO products typically come with a standard manufacturer's warranty. For specific warranty details, please refer to the documentation included with your purchase or visit the official ORICO website. For technical support, troubleshooting assistance, or warranty claims, please contact ORICO customer service through their official channels. Contact information can usually be found on the ORICO website or on the product packaging.

