

WESTERN DIESEL WD-ASSD-F1

Auto Start Stop Delete/Disable/Eliminator

MODEL: WD-ASSD-F1

Brand: WESTERN DIESEL

1. INTRODUCTION

This manual provides comprehensive instructions for the installation and operation of the WESTERN DIESEL Auto Start Stop Delete/Disable/Eliminator. This device is designed to automatically disable the auto start/stop feature in compatible vehicles, providing a consistent driving experience without manual intervention at each ignition cycle.

2. SAFETY INFORMATION

- Always ensure the vehicle's ignition is off and the battery is disconnected before performing any electrical work or installation.
- If you are unsure about any step of the installation process, consult a qualified automotive technician.
- Do not attempt to modify the device or use it for purposes other than its intended function.
- Keep the device away from moisture, extreme temperatures, and direct sunlight.

3. PACKAGE CONTENTS

Verify that your package contains the following item:

- 1 x WESTERN DIESEL Auto Start Stop Delete/Disable/Eliminator Module



Image: The Auto Start Stop Delete/Disable/Eliminator module, showing its compact design and connectors.

4. COMPATIBILITY

This device is specifically designed for and compatible with:

- **2015 - 2018 Ford F150 ONLY**

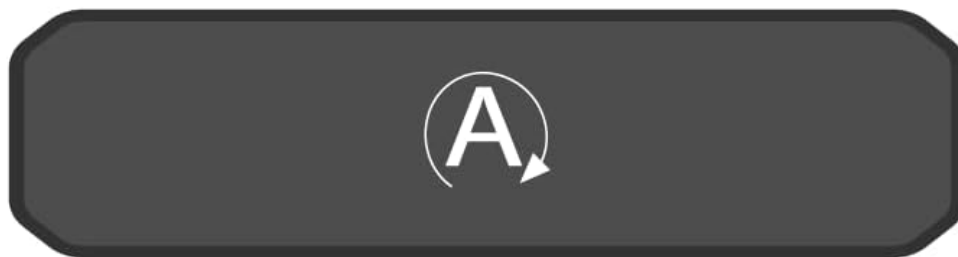
This device is **NOT** compatible with vehicles equipped with push-to-start ignition systems. It is intended for traditional key-start vehicles only.



Compatible



Incompatible



Incompatible

Image: Visual representation of compatible (top) and incompatible (middle and bottom) auto start/stop button configurations. The compatible button features a clear 'A OFF' indicator.

5. INSTALLATION GUIDE

The Auto Start Stop Delete module installs between the existing auto start/stop button and the truck's wiring harness. No cutting or splicing of wires is required.

2015 - 2018 Ford F150 ONLY

Auto Start Stop Delete installs between the button and the truck harness



Image: Diagram illustrating the connection points: the Auto Start Stop Button connects to the Auto Start Stop Delete module, which then connects to the Truck Harness.

Step-by-Step Installation:

1. **Step 1: Pry Up** - Carefully pry up the trim panel surrounding the auto start/stop button.
2. **Step 2: Remove Screws** - Locate and remove the screws (typically 7mm socket) securing the button assembly.
3. **Step 3: Pull Out** - Gently pull out the button assembly from the dashboard.
4. **Step 4: Unplug** - Disconnect the existing wiring harness from the back of the auto start/stop button.
5. **Step 5: Plug In Delete** - Connect the Auto Start Stop Delete module to the now-unplugged button.
6. **Step 6: Plug In Harness** - Connect the vehicle's original wiring harness to the other end of the Auto Start Stop Delete module.
7. **Step 7: Push Down & Install Screws** - Carefully push the button assembly back into place, ensuring all wires are clear, and re-install the screws.

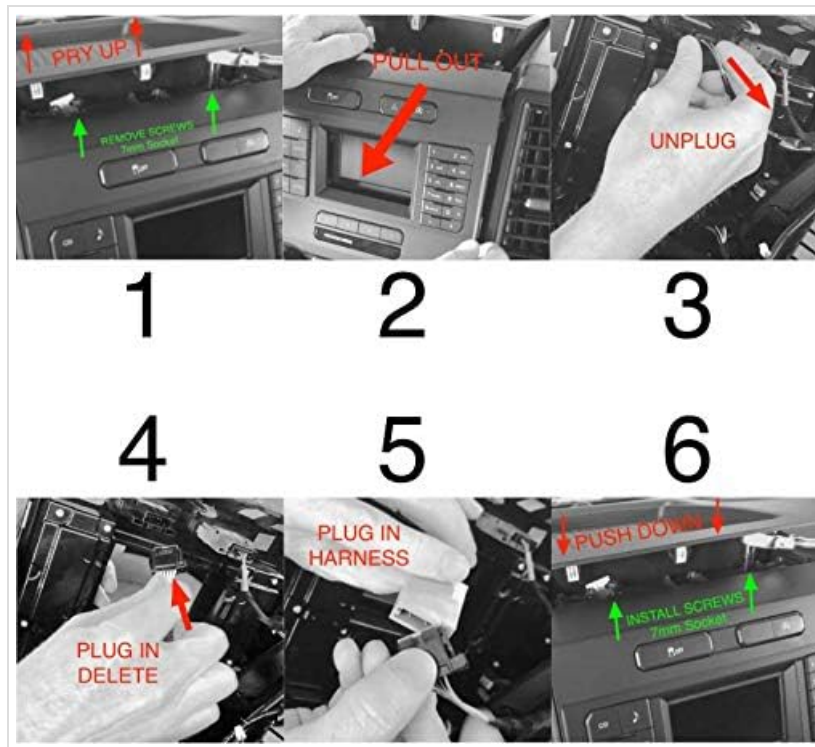


Image: A series of six black and white photographs demonstrating each step of the installation process, from prying up the panel to re-installing the screws.

6. OPERATION

Once installed, the WESTERN DIESEL Auto Start Stop Delete module operates automatically. Upon starting your vehicle, the device will ensure that the auto start/stop feature is disabled. The auto start/stop indicator light on your dashboard button will typically show as 'OFF' or illuminated, indicating the feature is inactive.

The device maintains the disabled state of the auto start/stop system without requiring manual button presses at the beginning of each drive cycle.

7. MAINTENANCE

The Auto Start Stop Delete module requires minimal maintenance. Ensure that the connections remain secure and free from debris or moisture. Periodically check the wiring for any signs of wear or damage. Keep the area around the module clean and dry.

8. TROUBLESHOOTING

Issue	Possible Cause	Solution
-------	----------------	----------

Issue	Possible Cause	Solution
Auto Start/Stop feature is still active after installation.	Incorrect installation; Incompatible vehicle model/ignition type.	Verify that the device is correctly installed between the button and the harness. Confirm your vehicle is a 2015-2018 Ford F150 with a traditional key start ignition.
Device appears to stop working intermittently.	Loose connection; Vehicle electrical anomaly.	Check all connections to ensure they are secure. If the issue persists, temporarily remove the device and re-install it. Ensure vehicle battery is in good condition.
Auto Start/Stop button cannot be reactivated manually.	This is expected behavior.	The device is designed to keep the auto start/stop feature disabled. Its primary function is to prevent the system from engaging, not to allow for manual re-activation. To re-enable the auto start/stop feature, the device must be removed.

9. SPECIFICATIONS

- **Item Model Number:** WD-ASSD-F1
- **Product Dimensions:** 4 x 1 x 0.38 inches
- **Item Weight:** 2 ounces
- **Manufacturer:** Western Diesel

10. WARRANTY INFORMATION

Specific warranty details for the WESTERN DIESEL Auto Start Stop Delete/Disable/Eliminator are provided by the manufacturer at the time of purchase. Please refer to any documentation included with your product or contact Western Diesel directly for warranty claims and information regarding protection plans.

11. CUSTOMER SUPPORT

For further assistance, technical support, or inquiries, please contact Western Diesel using the information below:

- **Website:** WWW.WESTERNDIESELAZ.COM
- **Phone:** 307-800-1490

