

Manuals.plus /

› HomeSpot /

› HomeSpot Bluetooth Audio Adapter (Model HS3-NS002-PG) Instruction Manual

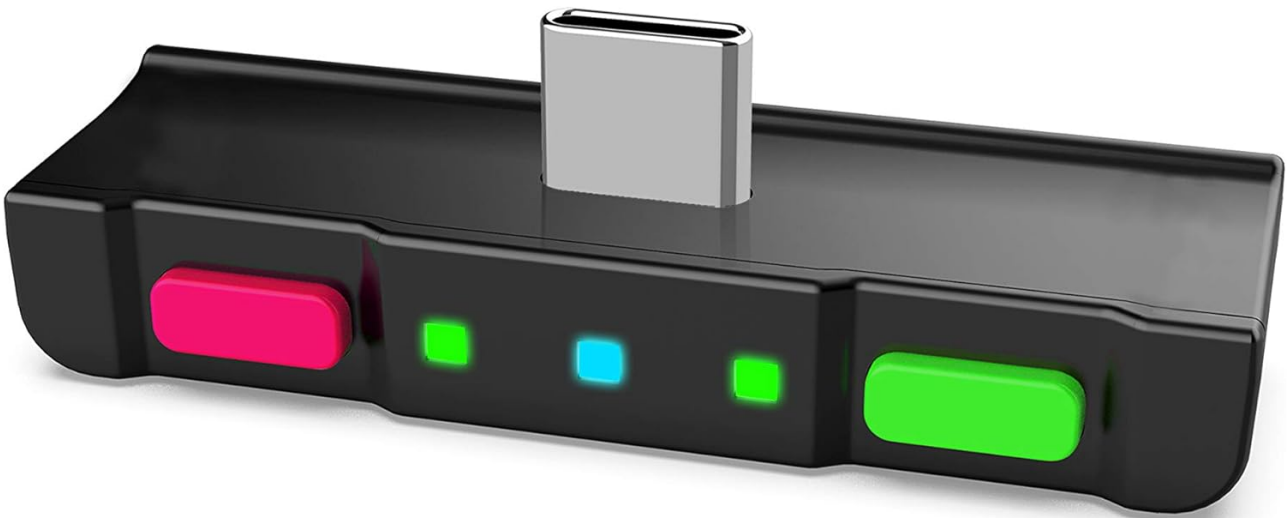
## HomeSpot HS3-NS002-PG

# HomeSpot Bluetooth Audio Adapter (Model HS3-NS002-PG) Instruction Manual

For Nintendo Switch, PS4, PS5, and PC

## 1. PRODUCT OVERVIEW

The HomeSpot Bluetooth Audio Adapter is designed to enable wireless audio connectivity for your gaming consoles and PCs. It features a USB-C connection, a built-in microphone for in-game voice chat, and supports aptX Low Latency for minimal audio delay. This adapter allows for dual streaming to two pairs of headphones simultaneously.



*Image 1: HomeSpot Bluetooth Audio Adapter. This compact device plugs into a USB-C port, featuring two control buttons and LED indicators.*

### Key Features:

- **USB-C Connectivity:** Direct digital audio transmission.
- **Built-in Microphone:** For convenient in-game voice chat.
- **aptX Low Latency:** Ensures minimal audio delay for a synchronized experience.
- **Dual Streaming:** Connects to two Bluetooth headphones simultaneously.
- **Plug and Play:** Simple setup for immediate use.

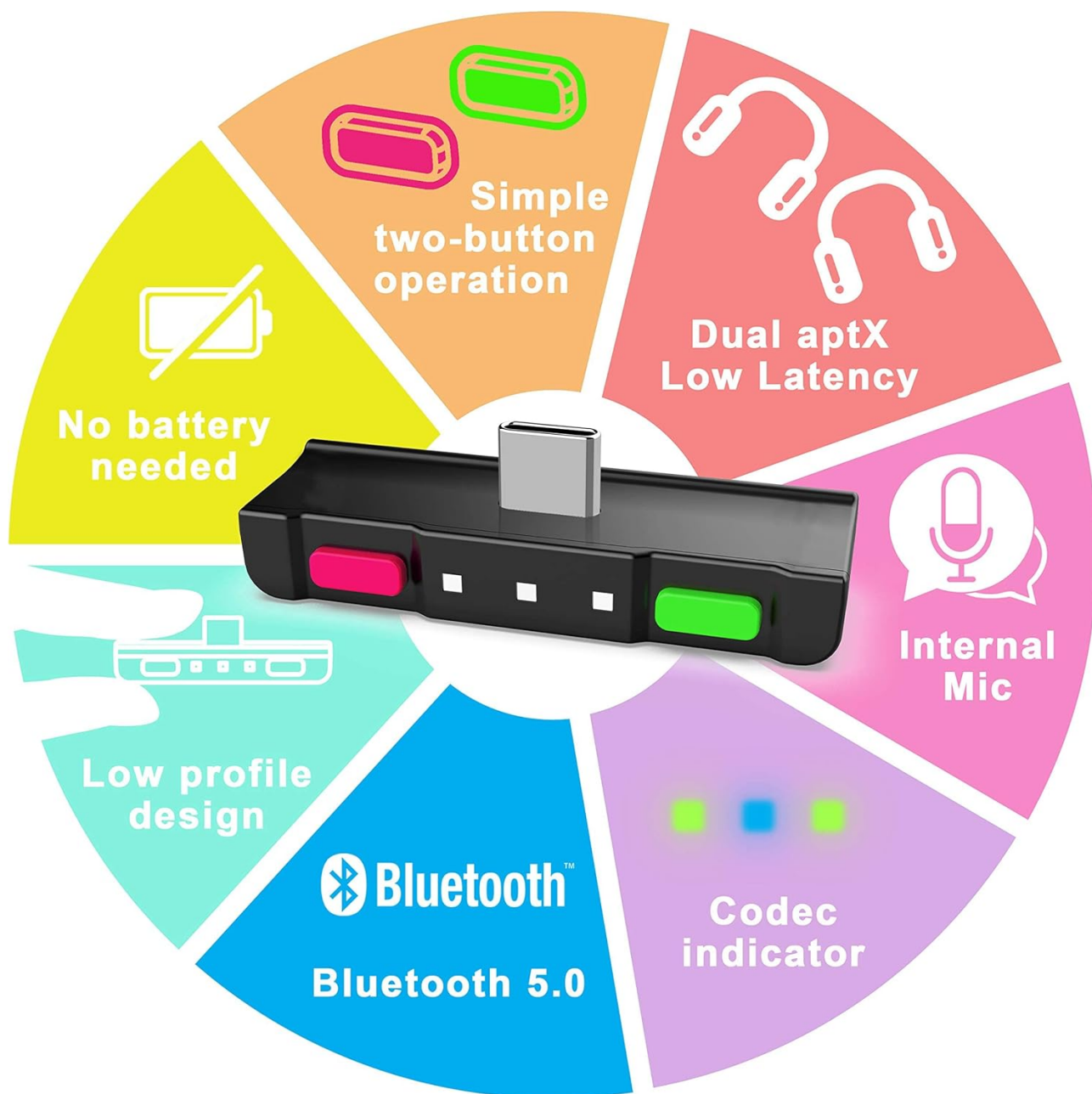


Image 2: Diagram highlighting the adapter's features, such as dual aptX Low Latency, internal microphone, and Bluetooth 5.0 connectivity.

## 2. SETUP INSTRUCTIONS

### 2.1 Initial Connection

1. **Insert the Adapter:** Plug the HomeSpot Bluetooth Audio Adapter into the USB-C port of your Nintendo Switch (handheld mode), PS5, PS4 (via USB-A adapter), or PC.
2. **Power On:** Ensure your device (Switch, PS5, PC) is powered on. The adapter's light will begin blinking slowly, indicating it is in pairing mode. A blinking blue light typically signifies PS5 mode.
3. **Pair Headphones:** Put your Bluetooth headphones or earbuds into pairing mode and place them close to the adapter. The adapter will automatically connect. Once connected, the adapter's light will turn solid.



## Designed for Nintendo Switch

*Image 3: The compact design of the HomeSpot adapter, shown plugged into a Nintendo Switch, is ideal for handheld gaming.*

### 2.2 Connecting to PS5/PC (Video Guide)

Watch this video for a visual guide on connecting the adapter to your PS5 or PC, including pairing headphones and adjusting sound settings.

Your browser does not support the video tag.

*Video 1: D1 Adapter Operation Guide Video. This video demonstrates how to connect the adapter to a PS5 or PC, pair headphones, and configure audio settings.*

### 2.3 Using with USB-A Port

If your device only has USB-A ports (e.g., PS4, some PCs), use the included USB-C to USB-A adapter. Plug the HomeSpot adapter into the USB-C end of the adapter cable, then plug the USB-A end into your device.



*Image 4: The adapter can be used with a Nintendo Switch in docked mode by connecting it to the dock's USB-A port using the provided adapter.*

## **2.4 Important Compatibility Note**

**The adapter is not compatible with most protective casings on the Nintendo Switch or Switch Lite. Protective casings may prevent the adapter from being fully inserted into the USB-C port, hindering proper connection.**



## Not compatible with most protective casings

Protective casing will prevent the adapter from being fully inserted into the USB-C port



Image 5: Illustration demonstrating that the adapter may not fit if a protective casing is installed on the console.

### 3. OPERATING INSTRUCTIONS

#### 3.1 Controls and Indicators

# Easy to Use

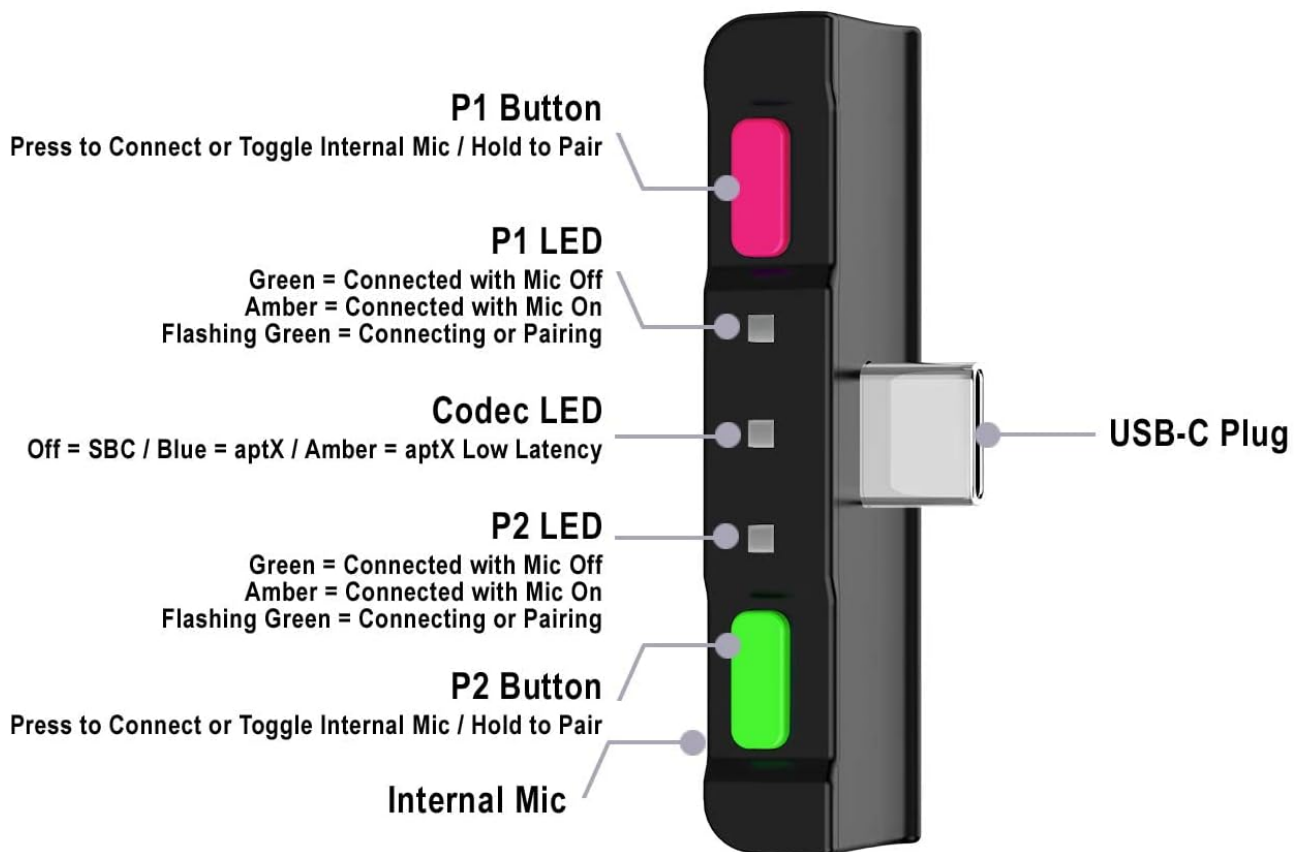


Image 6: Detailed diagram of the adapter's P1 and P2 buttons, P1 and P2 LEDs, Codec LED, and internal mic.

- **P1 Button (Neon Pink):** Press to connect or toggle the built-in mic. Hold to enter pairing mode.
- **P2 Button (Neon Green):** Press to connect or toggle the built-in mic. Hold to enter pairing mode.
- **P1 LED:** Solid Amber = Built-in mic On; Solid Green = Built-in mic Off; Flashing Green = Connecting or Pairing.
- **Codec LED:** Off = SBC; Blue = aptX; Amber = aptX Low Latency.

## 3.2 In-Game Voice Chat with Built-in Mic

The adapter supports in-game voice chat through its built-in microphone. To toggle the built-in mic On/Off, press the **P1 button** when the adapter is paired with headphones. The P1 LED will indicate the mic status (Solid Amber for On, Solid Green for Off).

The built-in mic has an effective operating range of 4 feet or less, primarily for handheld mode. It is not practical for docked mode if you are more than 4 feet away.



## In-Game Voice Chat Support

Image 7: Two users enjoying in-game voice chat with the HomeSpot adapter, highlighting its microphone capabilities.

### 3.3 In-Game Voice Chat with Headphones Mic (HFP Mode - Beta)

For voice chat using your headphones' built-in mic (in docked mode or if preferred), enable HFP mode:

1. Turn on your Nintendo Switch and go to the Home menu.
2. Press and hold the **P2 button** while inserting the adapter into the Switch.
3. Keep holding the P2 button until the LEDs light up after inserting the adapter.
4. Connect with your headphones as normal.

Once HFP mode is enabled and the adapter is connected:

- You can still press **P1** to toggle the built-in mic (P1 LED Solid Amber = On, Solid Green = Off).
- Alternatively, you can press the Play/Pause button on your headphones to toggle the headphones mic (P1 LED Flashing Amber = On, Solid Green = Off).

**Note:** HFP mode is currently in beta and may not work with all Bluetooth headphones. Audio quality may also be degraded when the headphones mic is active in HFP mode. HFP mode is disabled automatically when the adapter is unplugged or the Switch enters Sleep/Off mode.

### 3.4 Dual Streaming

The adapter supports streaming audio to two pairs of headphones simultaneously with aptX Low Latency. To connect a second pair of headphones, ensure the first pair is already connected, then put the second pair into pairing mode and

press the corresponding P1 or P2 button on the adapter to initiate pairing.

### 3.5 Tips & Tricks for PS5/PC (Video Guide)

This video provides additional tips and tricks for optimizing your experience with the HomeSpot Bluetooth Adapter on PS5 and PC, particularly regarding sound settings.

Your browser does not support the video tag.

*Video 2: Tips & Tricks - C81 Bluetooth Adapter for PS5 & PC. This video offers helpful advice for connecting and configuring the adapter with PlayStation 5 and personal computers.*

## 4. MAINTENANCE

To ensure the longevity and optimal performance of your HomeSpot Bluetooth Audio Adapter, follow these simple maintenance guidelines:

- **Cleaning:** Use a soft, dry cloth to gently wipe the adapter. Avoid using liquid cleaners or abrasive materials.
- **Storage:** When not in use, store the adapter in a cool, dry place away from direct sunlight and extreme temperatures.
- **Handling:** Avoid dropping the adapter or subjecting it to strong impacts. Do not attempt to disassemble the device.

## 5. TROUBLESHOOTING

If you encounter issues with your HomeSpot Bluetooth Audio Adapter, please refer to the following common solutions:

- **No Audio:**
  - Ensure the adapter is fully inserted into the USB-C port.
  - Verify your headphones are successfully paired and connected (solid LED on adapter).
  - Check your console/PC's audio output settings. For PlayStation, ensure the audio output is set to "Headphones (USB Headset)" and "Output to Headphones" is set to "All Audio".
  - Confirm your headphones' volume is turned up.
- **Pairing Issues:**
  - Make sure your headphones are in pairing mode and not connected to any other device.
  - Ensure the adapter is in pairing mode (slowly blinking LED). If not, press and hold a P button for 3 seconds.
  - Try restarting both the adapter (unplug and replug) and your headphones.
- **Microphone Not Working:**
  - For built-in mic, press the P1 button to toggle it on (P1 LED Solid Amber).
  - For headphones mic, ensure HFP mode is activated (see section 3.3).
  - Check your console/PC's microphone input settings to ensure the adapter is selected.
- **Adapter Not Fitting:**
  - Remove any protective casings from your Nintendo Switch or Switch Lite that may obstruct the USB-C port.

## 6. SPECIFICATIONS

Feature	Detail
Brand	HomeSpot
Model Number	HS3-NS002-PG
Product Dimensions	1.89 x 0.59 x 0.31 inches
Item Weight	1.41 ounces
Connector Type	USB Type C
Compatible Devices	Gaming Console (Nintendo Switch, PS4, PS5), Headphone, PC, Speaker
Color	Neon Pink & Neon Green

## 7. WARRANTY AND SUPPORT

HomeSpot products are designed for reliability and performance. For information regarding product warranty, please refer to the warranty card included with your purchase or visit the official HomeSpot website.

For technical support, troubleshooting assistance, or any inquiries about your HomeSpot Bluetooth Audio Adapter, please contact HomeSpot customer service through their official channels. Contact details can typically be found on the product packaging or the HomeSpot website.