

Manuals+

[Q & A](#) | [Deep Search](#) | [Upload](#)

manuals.plus /

- › [Baby Einstein](#) /
- › [Baby Einstein 4-in-1 Kickin' Tunes Play Gym and Piano Activity Mat User Manual](#)

Baby Einstein 11749

Baby Einstein 4-in-1 Kickin' Tunes Play Gym and Piano Activity Mat User Manual

Model: 11749

1. IMPORTANT SAFETY INFORMATION

Please read all instructions before assembly and use of this product. Keep this manual for future reference.

WARNING: This toy produces flashes that may trigger epilepsy in sensitized individuals. Adult supervision is required at all times.

Ensure all components are securely fastened before placing a child in the play gym. Do not leave children unattended.

2. PRODUCT OVERVIEW

The Baby Einstein 4-in-1 Kickin' Tunes Play Gym and Piano Activity Mat is designed to provide a stimulating environment for infants from 0 to 36 months. It features a soft play mat, two toy arches, a detachable musical piano, and various sensory toys. This activity mat supports visual development, fine motor skills, gross motor skills, and introduces early language concepts.



Image 2.1: Fully assembled Baby Einstein 4-in-1 Kickin' Tunes Play Gym, showing the mat, arches, piano, and hanging toys.

3. PACKAGE CONTENTS

Verify that all items listed below are present in the package:

- Play Mat
- Piano Toy (detachable)
- Detachable Toys (7 total, including crinkle medallion, triangle rattle, textured music note, flash cards, self-discovery mirror, frog toy, book toy)
- Tummy Time Pillow
- Toy Bar Assembly (2 arches)

- | | |
|------------------------------|--------------------|
| 1 Textured music note | 5 Piano Toy |
| 2 Baby-safe mirror | 6 Rattle |
| 3 Flash Cards | 7 Book |
| 4 Crinkle Toy | |



Image 3.1: Diagram illustrating the various components of the play gym, including the textured music note, baby-safe mirror, flash cards, crinkle toy, piano toy, rattle, and book.

4. SETUP INSTRUCTIONS

- Unpack Components:** Carefully remove all items from the packaging.
- Insert Batteries:** The piano requires 3 AA batteries (not included). Locate the battery compartment on the back of the piano, open it with a screwdriver, insert the batteries, and secure the cover.
- Assemble Toy Arches:** Connect the two flexible toy arches to the designated slots on the play mat. Ensure they are securely clicked into place to form a stable overhead structure.
- Attach Piano:** Position the piano at the foot of the mat, ensuring it is securely attached to the mat's loops or stands. The piano can be adjusted to face upwards for kicking or rotated for seated play.
- Hang Toys:** Attach the various detachable toys to the loops on the toy arches. Arrange them at different heights and positions to encourage reaching and grasping.
- Position Tummy Time Pillow:** Place the tummy time pillow on the mat as needed to support the baby during tummy time activities.

5. OPERATING MODES

The 4-in-1 design allows for versatile play as your baby grows:

1



Laying

2



Sitting

3



Tummy Time

4



Take Along

Image 5.1: Visual representation of the four distinct play modes for the activity mat.

- **Lay and Play (0+ months):** Baby lies on their back, kicking the piano and reaching for overhead toys. This mode encourages visual tracking and gross motor skills.

Magic Touch technology responds easily to baby's touch



Image 5.2: An infant engaging in the 'Lay and Play' mode, interacting with the piano using their feet.

- **Tummy Time (3+ months):** Baby lies on their stomach, supported by the prop pillow, engaging with the piano and toys within reach. This strengthens neck and core muscles.



Image 5.3: An infant during 'Tummy Time', positioned to interact with the musical piano.

- **Seated Play (6+ months):** As baby learns to sit, the piano can be rotated upwards for them to play with their hands. The toy arches can remain or be removed.

Piano rotates for seated play



Image 5.4: An adult and infant demonstrating the 'Seated Play' mode, with the piano adjusted for hand interaction.

- **On-the-Go (9+ months):** The musical piano detaches from the mat for portable play, allowing the child to take the music and learning anywhere.

Learn in 4 languages: English Spanish, German, and French



Image 5.5: A toddler holding the detachable piano, illustrating the 'On-the-Go' play option.

6. INTERACTIVE FEATURES

6.1 Musical Piano

The piano features Magic Touch technology, responding to every kick, tap, and press. It offers over 70 melodies and sounds, with 25+ minutes of continuous music and lights. It teaches colors, shapes, and numbers in four languages: English, Spanish, French, and German.

**70+ sounds & activities;
25+ minutes of music**



Image 6.1: Close-up of an infant's feet activating the Magic Touch piano, demonstrating its responsive design.

6.2 Detachable Sensory Toys

The play gym includes seven detachable toys designed to engage and promote fine and gross motor skills:

- **Textured Music Note:** Encourages tactile exploration.



Image 6.2: A blue textured music note toy, designed for sensory engagement.

- **Baby-Safe Mirror:** Promotes self-discovery.



Image 6.3: A baby-safe mirror toy, encouraging self-recognition and visual play.

- **Flash Cards:** Features animals, shapes, and colors for early learning.



Image 6.4: A flash card toy featuring a zebra, used for early visual and cognitive development.

- **Crinkle Toy:** Provides auditory stimulation.
- **Triangle Rattle:** Offers auditory and tactile stimulation.

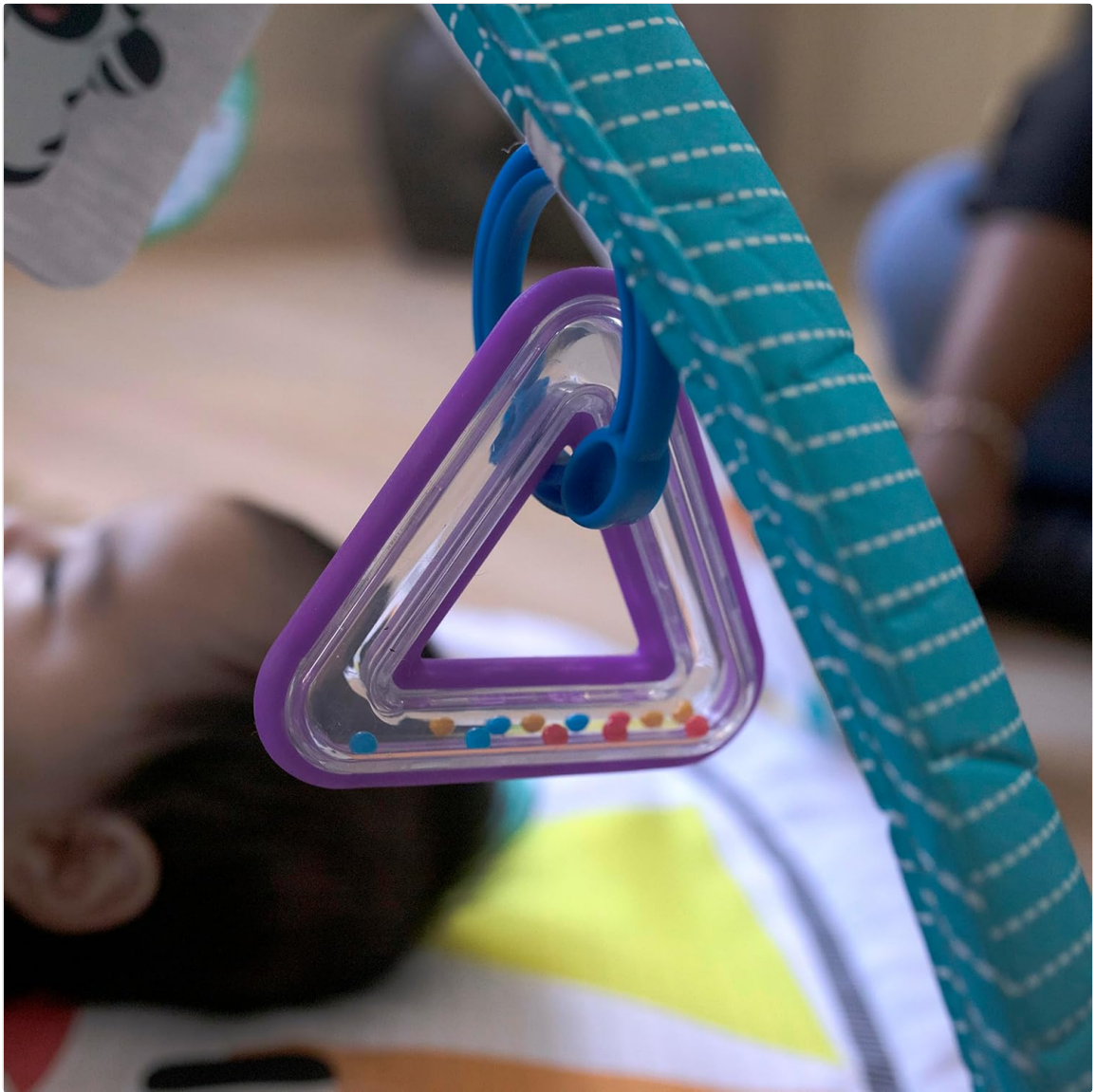


Image 6.5: A clear triangle rattle toy containing colorful beads, providing auditory and visual stimulation.

- **Frog Toy:** A soft, engaging character toy.

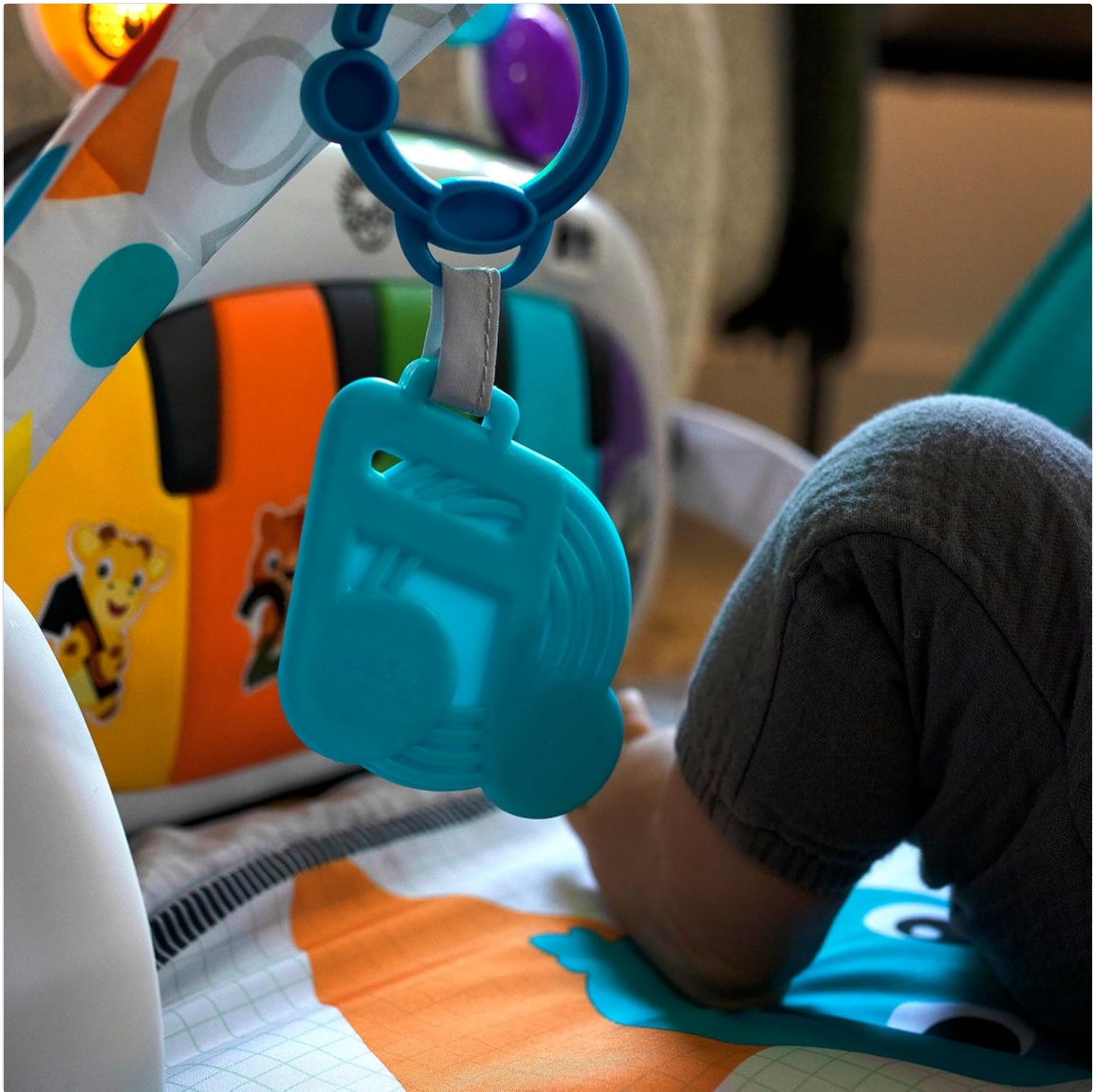


Image 6.6: A frog-themed toy, designed to be visually appealing and encourage interaction.

- **Soft Book:** Features colorful pages for tactile exploration and visual engagement.



Image 6.7: A soft fabric book toy, providing tactile and visual stimulation for infants.

7. CARE AND MAINTENANCE

- **Play Mat:** Remove the toy bar assembly, piano, piano legs, and all detachable toys before washing. Machine wash the mat with cold water on a gentle cycle. Do not use bleach. Air dry flat.
- **Toy Bar Assembly and Toys:** Wipe clean with a damp cloth and mild soap. Air dry thoroughly. Do not immerse these components in water.
- **Piano:** Wipe clean with a damp cloth. Do not immerse in water.

8. TROUBLESHOOTING

- **No Sound/Lights from Piano:**
 - Check if the piano is switched ON.
 - Ensure batteries are correctly installed with the correct polarity.
 - Replace old batteries with new AA batteries.
- **Toys Not Staying Attached:**
 - Ensure the toy rings are fully closed and securely looped onto the toy bar fabric loops.
- **Play Mat Not Flat:**

- Allow the mat to air out and flatten naturally after unpacking. Gentle stretching may help.

9. SPECIFICATIONS



Image 9.1: Visual representation of the play gym's dimensions.

Feature	Detail
Product Dimensions	27 x 34 x 18 inches (68.6 x 86.4 x 45.7 cm)
Item Model Number	11749
Batteries Required	3 AA batteries (not included)
Material Type	80% Fabric, 20% Plastic
Item Weight	3.19 pounds
Target Gender	Unisex

10. SUPPORT AND WARRANTY

For additional support, detailed instructions, or warranty information, please refer to the official user manual PDF:

[Download User Manual \(PDF\)](#)

Contact Baby Einstein customer service for further assistance.