

## Jiayi 1022

# Jiayi Ultra-Thin Cabinet Magnetic Catch (Model 1022) - Instruction Manual

Your guide to secure and discreet cabinet closures.

## 1. PRODUCT OVERVIEW

---

The Jiayi Ultra-Thin Cabinet Magnetic Catch is designed to provide a strong, reliable closure for cabinet doors, drawers, lids, and sliding wardrobe doors. Its ultra-thin profile ensures it remains discreet while offering significant holding power.

### Key Features:

- **Ultra-Thin Design:** Only 3.65 mm thick, ensuring minimal visibility.
- **Powerful Magnetic Force:** Provides up to 10 lbs of holding power to keep doors securely closed.
- **Dual Installation Options:** Can be installed using strong adhesive tape or screws.
- **Durable Construction:** Made from metal material for long-lasting performance, resistant to corrosion and cracking.
- **Versatile Application:** Ideal for kitchen cabinets, closets, drawers, and various types of doors.

### Package Contents:

- 4 x Cabinet Magnetic Catches
- 16 x Screws
- 8 x Double-sided Adhesive Tapes

## 2. SETUP AND INSTALLATION

---

The Jiayi Magnetic Catch offers two installation methods: adhesive or screw-in. Choose the method best suited for your application.

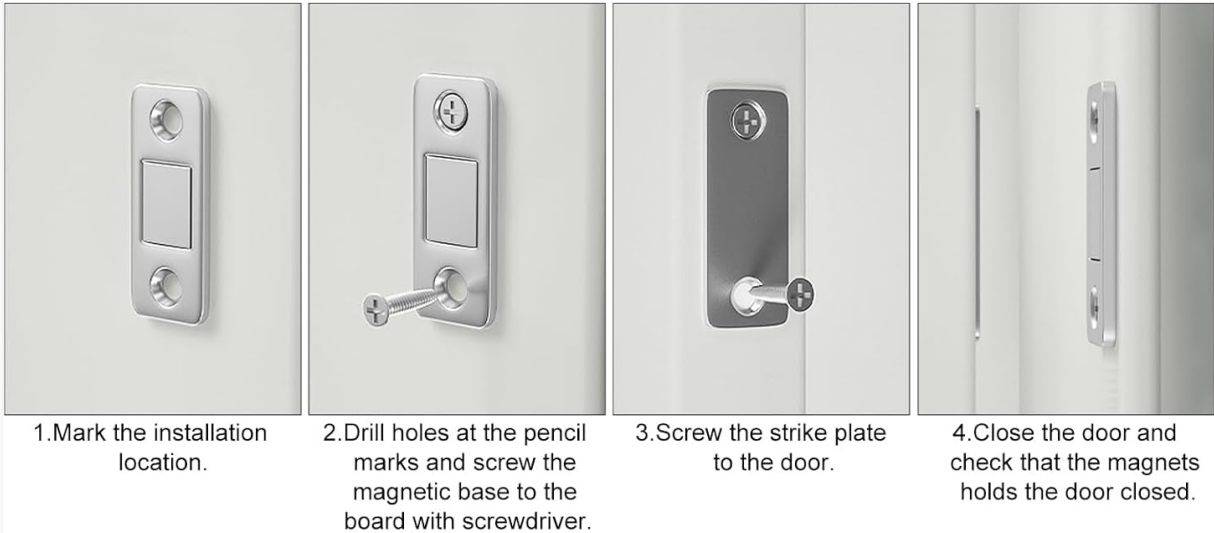
### Adhesive Installation:

1. Clean the surface where the magnetic catch and strike plate will be installed. Ensure it is dry and free

of dust or grease.

2. Peel off the backing from the double-sided adhesive tape.
3. Attach the adhesive to the back of the magnetic catch and the strike plate.
4. Carefully align and press the magnetic catch onto the desired location on the cabinet frame.
5. Close the cabinet door to mark the exact position for the strike plate. Attach the strike plate to the door.
6. **Important:** For optimal adhesion, allow 12-24 hours before closing and opening the door to ensure the adhesive fully cures.

## Screw Installation



## Adhesive Installation

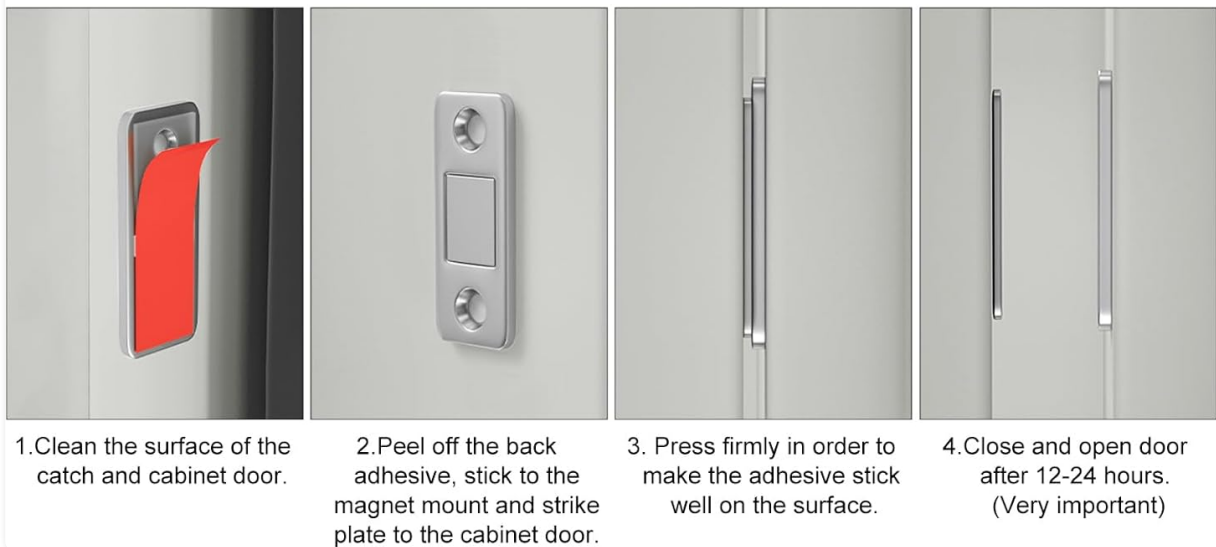


Figure 1: Visual guide for both screw and adhesive installation methods.

### Screw Installation:

1. Mark the precise installation location for the magnetic catch on the cabinet frame.
2. Drill pilot holes at the marked points.
3. Secure the magnetic catch to the cabinet frame using the provided screws.
4. Close the cabinet door to determine the exact alignment for the strike plate. Mark the screw holes on the door.
5. Drill pilot holes and attach the strike plate to the door using the remaining screws.

Your browser does not support the video tag.

Video 1: Demonstrates the self-adhesive installation process for the Jiayi Cabinet Door Magnet.

### 3. OPERATING THE MAGNETIC CATCH

Once installed, the Jiayi Magnetic Catch operates automatically. The powerful magnet within the catch will attract the metal strike plate on the door, holding it firmly in a closed position. To open the door, simply apply a gentle pull.



Figure 2: The thin magnet provides strong holding force, capable of keeping even tall sliding doors closed.



Figure 3: The magnetic catch demonstrates its powerful holding capability.

## 4. MAINTENANCE

The Jiayi Ultra-Thin Cabinet Magnetic Catch requires minimal maintenance. To ensure optimal performance and longevity:

- Periodically wipe the magnetic surfaces with a soft, dry cloth to remove any dust or debris.
- Avoid using abrasive cleaners or solvents, as these may damage the finish or the adhesive.
- Inspect the screws or adhesive periodically to ensure they remain secure.

## 5. TROUBLESHOOTING

If you encounter issues with your Jiayi Ultra-Thin Cabinet Magnetic Catch, consider the following:

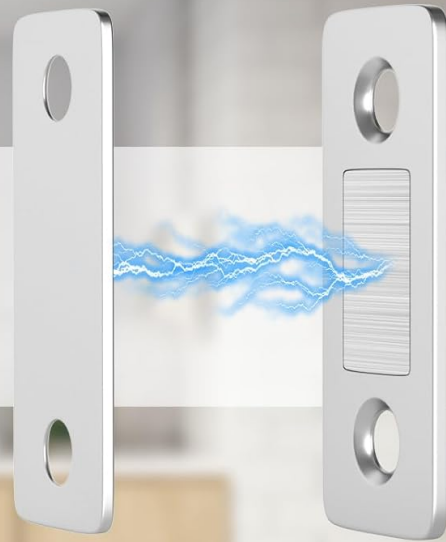
### Door Not Staying Closed:

- **Check Alignment:** Ensure the magnetic catch and strike plate are perfectly aligned. Misalignment can reduce magnetic force.
- **Adhesive Strength:** If using adhesive, ensure the 12-24 hour curing period was observed. For heavy or frequently used doors, screw installation is recommended for maximum security.
- **Obstructions:** Verify there are no physical obstructions preventing the door from closing completely.

### Adhesive Losing Grip:

- The adhesive is strong for initial placement and lighter applications. For long-term durability and heavier loads, it is highly recommended to use the provided screws for installation.
- Ensure the surface was thoroughly cleaned and dry before adhesive application.

# Jiayi Magnetic Catch Help You Solve Your Troubles



Cabinet doors not closing properly



Children flip cabinets



Naughty pets

Figure 4: The magnetic catch provides solutions for common household issues like unlatched doors, curious children, and pets.

## 6. SPECIFICATIONS

Feature	Detail
Manufacturer	Jiayi
Part Number	4P22
Item Weight	4.6 ounces
Product Dimensions	1.97 x 0.79 x 0.39 inches
Item Model Number	1022
Size	4 Pack
Color	Silver
Finish	Steel

Feature	Detail
Material	Metal
Installation Method	Self-Adhesive, Screw-in
Special Features	Easy to Install
Usage	Door Closing
Included Components	Adhesive Tapes, Screws

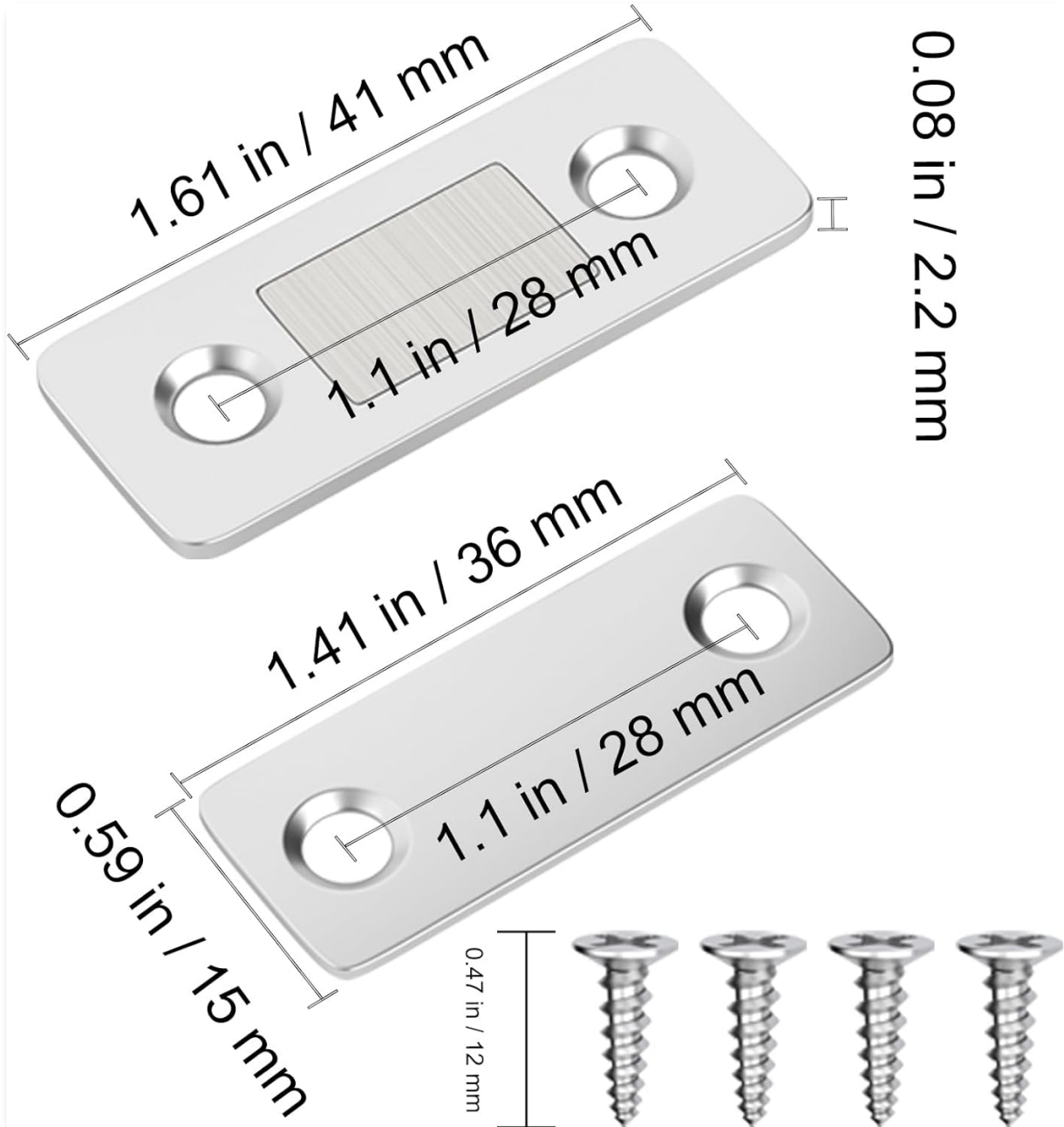


Figure 5: Detailed product dimensions and screw size.

## 7. WARRANTY AND SUPPORT

Jiayi provides 12 months of service support for this product. If you encounter any problems or have questions, please contact us directly for assistance, including free returns or exchanges.

For more information and products, visit the official [Jiayi Store](#).

