

AIPER P1111

AIPER Handheld Cordless Pool Vacuum P1111 Instruction Manual

Model: P1111 | Brand: AIPER

1. INTRODUCTION

Thank you for choosing the AIPER P1111 Handheld Cordless Pool Vacuum. This device is designed for efficient cleaning of small to medium-sized pools, spas, hot tubs, and fish ponds. Its cordless design offers portability and ease of use, making pool maintenance simpler. Please read this manual thoroughly before operation to ensure proper use and maintenance.

2. SAFETY INFORMATION

To prevent personal injury or damage to the product, always observe the following safety precautions:

- Read all instructions before using the appliance.
- Do not operate the vacuum if it is damaged or malfunctioning.
- Keep children and pets away from the pool area during operation.
- Ensure the charging port is dry before connecting the charger.
- Use only the charger supplied by the manufacturer.
- Do not immerse the charging adapter in water.
- Avoid using the vacuum to pick up sharp objects that could damage the filter or internal components.
- Always turn off the vacuum and disconnect it from any power source before cleaning or maintenance.

3. PRODUCT COMPONENTS

Familiarize yourself with the parts of your AIPER P1111 pool vacuum:

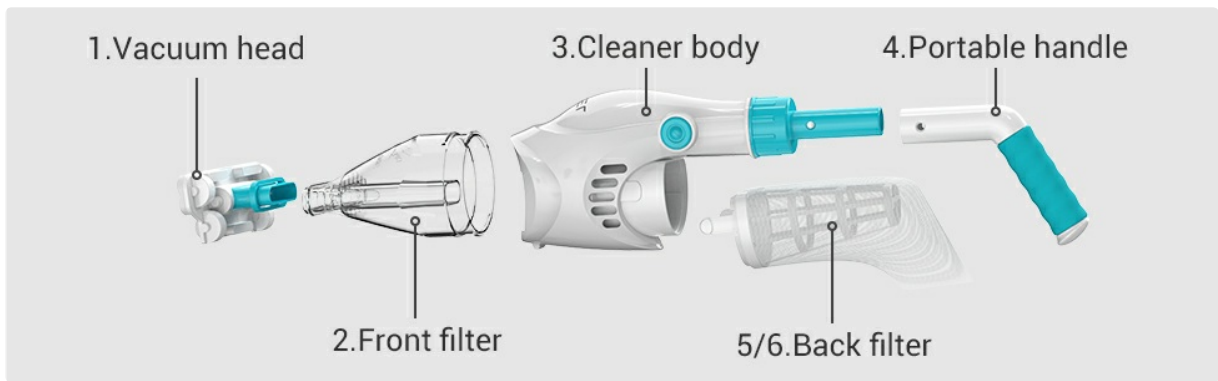


Figure 3.1: Exploded view of the AIPER P1111 Handheld Cordless Pool Vacuum showing its main components.

1. Vacuum head
2. Front filter
3. Cleaner body
4. Portable handle
5. Back filter (includes filter bag and basket)

Note: A telescopic pole is not included with this product and must be purchased separately if needed for extended reach.



Figure 3.2: The AIPER P1111 pool vacuum attached to a telescopic pole (not included).

4. SETUP AND ASSEMBLY

Follow these steps to assemble your pool vacuum:

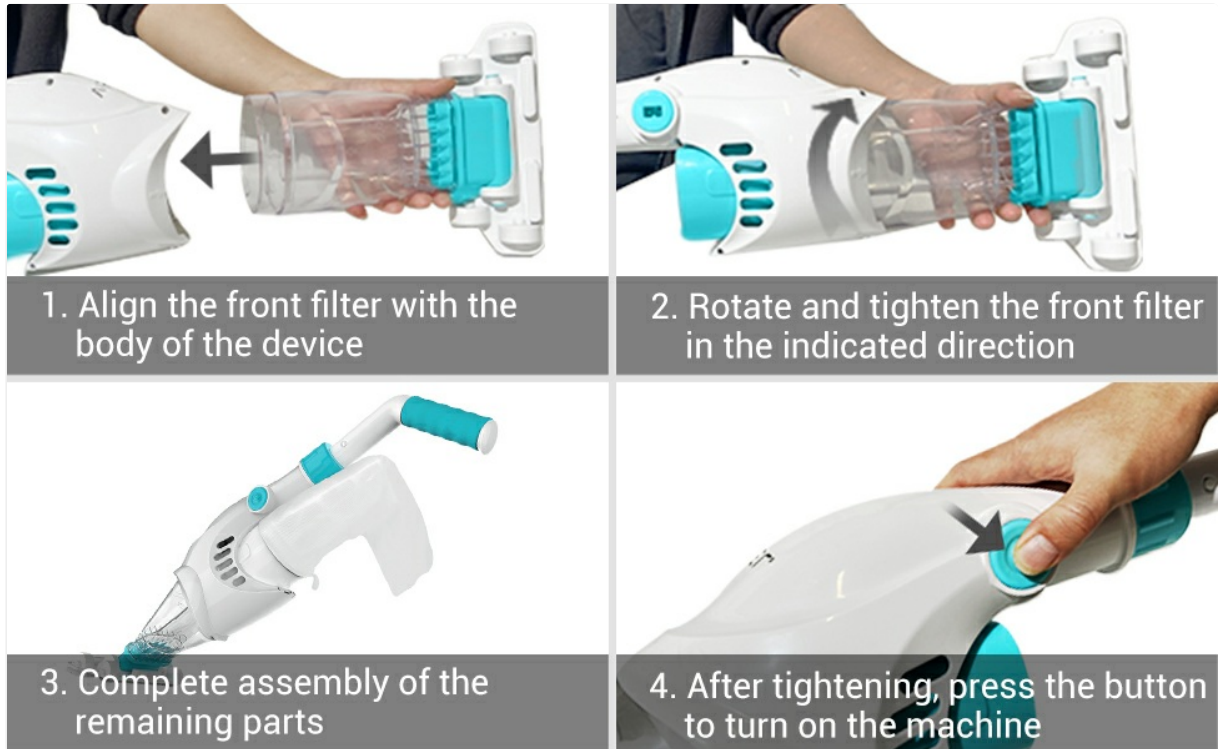


Figure 4.1: Visual guide for assembling the AIPER P1111 pool vacuum.

1. **Align the front filter:** Insert the front filter into the cleaner body, ensuring proper alignment.
2. **Rotate and tighten:** Rotate the front filter in the indicated direction until it is securely tightened.
3. **Complete assembly:** Attach the portable handle and vacuum head to the main body. Ensure all connections are firm.
4. **Power On:** After tightening all parts, press the power button to turn on the machine.

The assembly process is designed to be tool-free and straightforward.

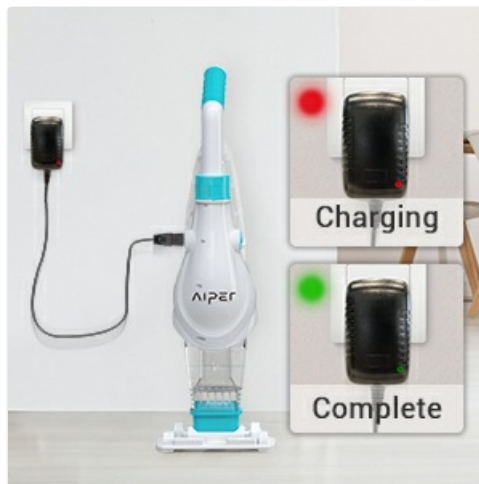


Figure 4.2: The vacuum head is designed for strong suction.

5. OPERATING INSTRUCTIONS

5.1 Charging the Vacuum

Before first use, fully charge the vacuum. The battery requires approximately 3 hours to fully charge and provides up to 60 minutes of running time.

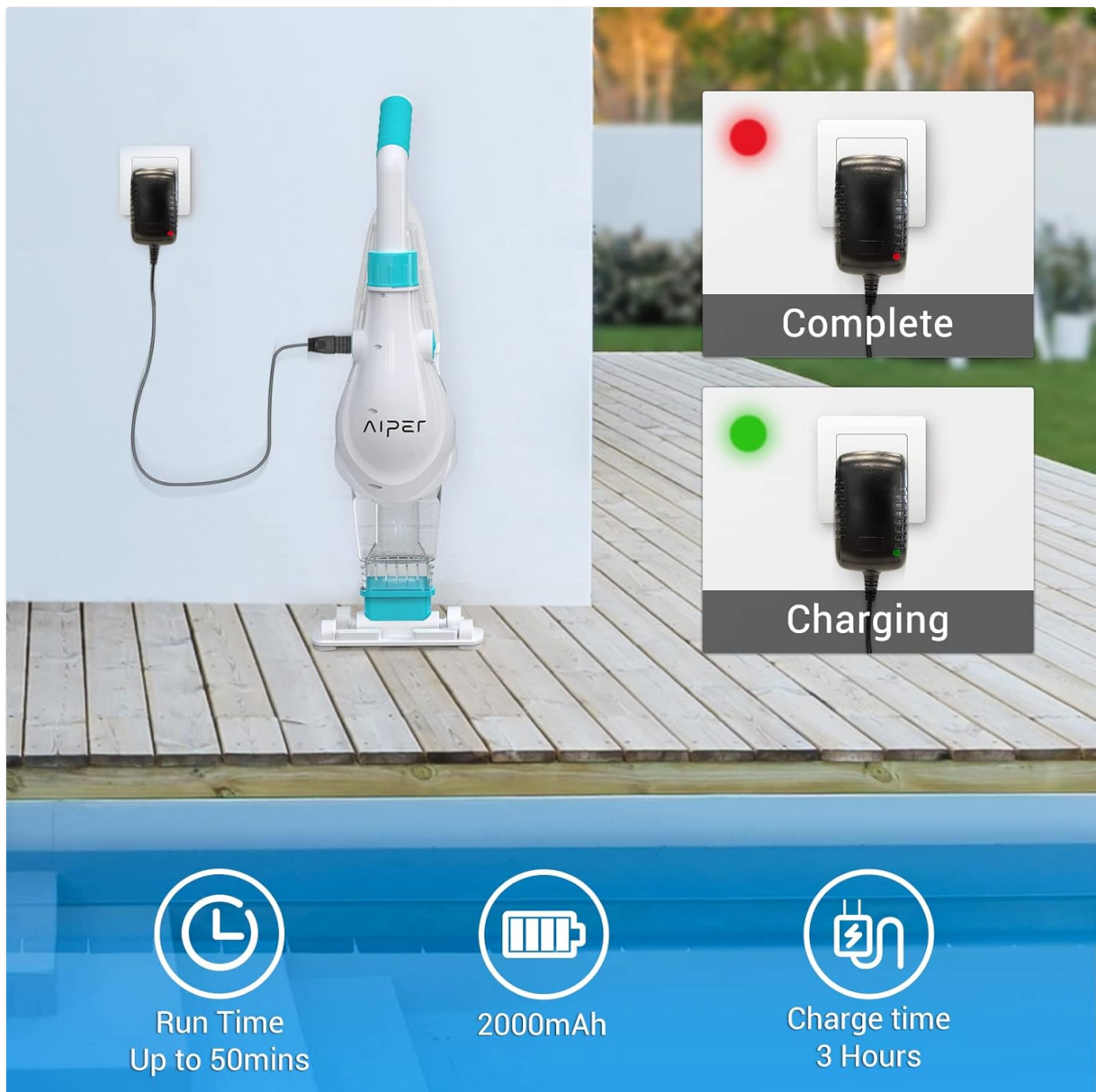


Figure 5.1: Charging the AIPER P1111 pool vacuum. Red light indicates charging, green light indicates charging complete.

- Connect the charging adapter to the vacuum's charging port.
- Plug the adapter into a power outlet.
- The indicator light will show the charging status (e.g., red for charging, green for complete).

5.2 Using the Vacuum

The AIPER P1111 is designed for versatile use, including cleaning pool steps and corners.



Figure 5.2: The vacuum effectively cleans pool steps and corners.

- Ensure the vacuum is fully charged and assembled.
- Submerge the vacuum into the pool. It will automatically activate upon contact with water.
- Guide the vacuum across the pool floor and walls using the handle or an attached telescopic pole (sold separately).
- The vacuum efficiently picks up sand, small leaves, silt, and pollen.
- After cleaning, lift the vacuum out of the water. It features a fast water release mechanism to drain water quickly.

Efficient Clean

Picks up sand, small leaves, silt and pollen with ease.



Figure 5.3: The vacuum's efficient cleaning action on pool debris.

Versatile Use

Perfect for right angle steps 



Figure 5.4: Fast water release when removing the vacuum from the pool.

The vacuum operates with low noise, ensuring a peaceful cleaning experience.

Your browser does not support the video tag.

Video 5.1: Demonstration of the AIPER P1111 Cordless Handheld Pool Vacuum in action, highlighting its lightweight design, powerful suction, and quiet operation.

6. MAINTENANCE

6.1 Cleaning the Filter

Regular cleaning of the filter is crucial for maintaining optimal suction and performance.



Figure 6.1: Cleaning the capacious filter of the AIPER P1111.

- Turn off the vacuum and remove it from the water.
- Detach the filter compartment.
- Remove the filter basket and empty any collected debris.
- Rinse the filter basket and filter bag thoroughly with clean water.
- Ensure the filter components are completely dry before reassembling them into the vacuum.

7. TROUBLESHOOTING

If you encounter issues with your AIPER P1111, refer to the following common problems and solutions:

Problem	Possible Cause	Solution
Vacuum does not turn on.	Low battery or not charged.	Charge the vacuum for 3 hours. Ensure the charging indicator shows it's charging.
Weak suction.	Clogged filter or full debris bag.	Clean the filter basket and filter bag thoroughly. Ensure no large debris is blocking the suction inlet.
Vacuum stops unexpectedly.	Battery depleted.	Recharge the vacuum.
Water does not drain quickly.	Drainage ports are blocked.	Check and clear any obstructions from the water release ports.

8. SPECIFICATIONS

Feature	Detail
Model Name	P1111
Brand	AIPER
Special Feature	Portable
Power Source	Battery Powered
Battery Type	Lithium Ion
Number of Batteries	1 (included)

Feature	Detail
Charging Time	Approx. 3 hours
Running Time	Up to 60 minutes
Item Weight	1.72 ounces
Product Dimensions	10 x 6 x 6 inches
Material	Nylon
Color	Blue

9. WARRANTY AND SUPPORT

For warranty information, technical support, or customer service inquiries, please refer to the contact information provided with your product packaging or visit the official AIPER website. Keep your purchase receipt as proof of purchase for warranty claims.