

[Manuals.plus](#) /

› [Larcele](#) /

› Larcele Micro Dog Building Blocks Golden Retriever Instruction Manual

## Larcele KLJM-02

# Larcele Micro Dog Building Blocks

## GOLDEN RETRIEVER MODEL (KLJM-02) - INSTRUCTION MANUAL

Brand: Larcele

### 1. Introduction

This instruction manual provides guidance for assembling your Larcele Micro Dog Building Blocks Golden Retriever model. This set contains approximately 950 micro-sized building bricks designed to create a detailed Golden Retriever figure. Please read through all instructions carefully before beginning assembly.

### 2. Safety Information

- **Choking Hazard:** Not suitable for children under 3 years of age due to small parts.
- **Recommended Age:** While the product meets criteria for ages 6 and up, based on customer feedback, assembly is recommended for individuals aged 14 and older due to the intricate nature and small size of the bricks.
- Keep all building blocks and packaging materials away from infants and young children to prevent accidental ingestion.

### 3. Package Contents

Please verify that all components are present before starting assembly:

- Approximately 950 Micro Building Blocks (various colors and shapes)
- Instruction Manual (this document)
- Assembly Tool (e.g., brick separator, tweezers - *note: tweezers are highly recommended for handling the tiny pieces, but may not be included in all sets*)



Image: The Larcele Micro Dog Building Blocks Golden Retriever set, showing the assembled model and its yellow packaging box.

#### 4. Assembly Instructions

The assembly process involves connecting micro-sized building blocks layer by layer. Patience and attention to detail are key to successful construction.

1. **Preparation:** Unpack all building blocks and organize them by color or shape if desired. Due to the very tiny size of the bricks, using a pair of fine-tipped tweezers (not included) is strongly suggested for easier handling and precise placement.
2. **Follow the Instructions:** Refer to the included visual instruction manual for step-by-step guidance. Each step illustrates the placement of specific bricks to form the model layer by layer.
3. **Layer-by-Layer Construction:** Begin by assembling the base layers as indicated. Carefully align and press each brick into place. The initial layers may seem complex, but the process becomes more intuitive as the structure takes shape.
4. **Using the Tool:** If a brick separator or similar tool is included, use it to carefully detach incorrectly placed bricks without damaging them.

## Size Reference



Image: A visual comparison demonstrating the small size of the micro building blocks against common coins (Euro, Quarter Dollar, Pound) and a human finger, highlighting their miniature scale.

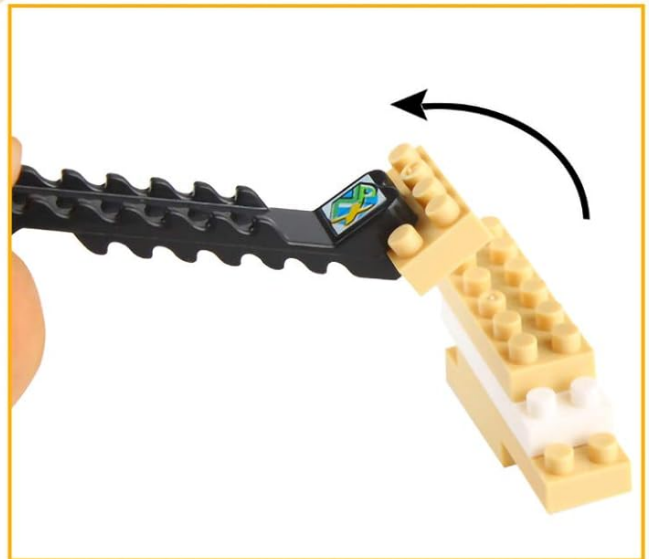
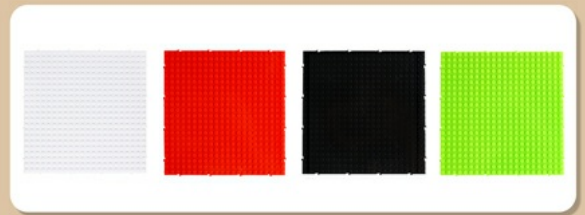
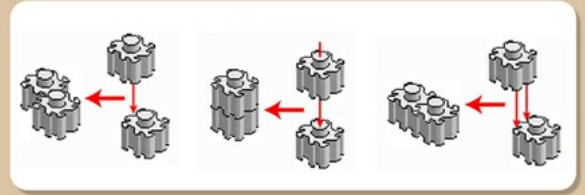
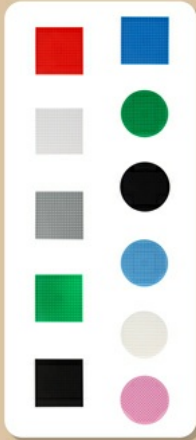


Image: A pile of various micro building blocks, alongside a demonstration of how to use a brick separator tool to remove or adjust bricks during assembly.



Board

tool

Board

Image: An overview displaying various micro building block shapes, recommended assembly tools like tweezers and brick separators, and examples of color-coded base boards for organization.

Upon completion, you will have a detailed Golden Retriever figure suitable for display.

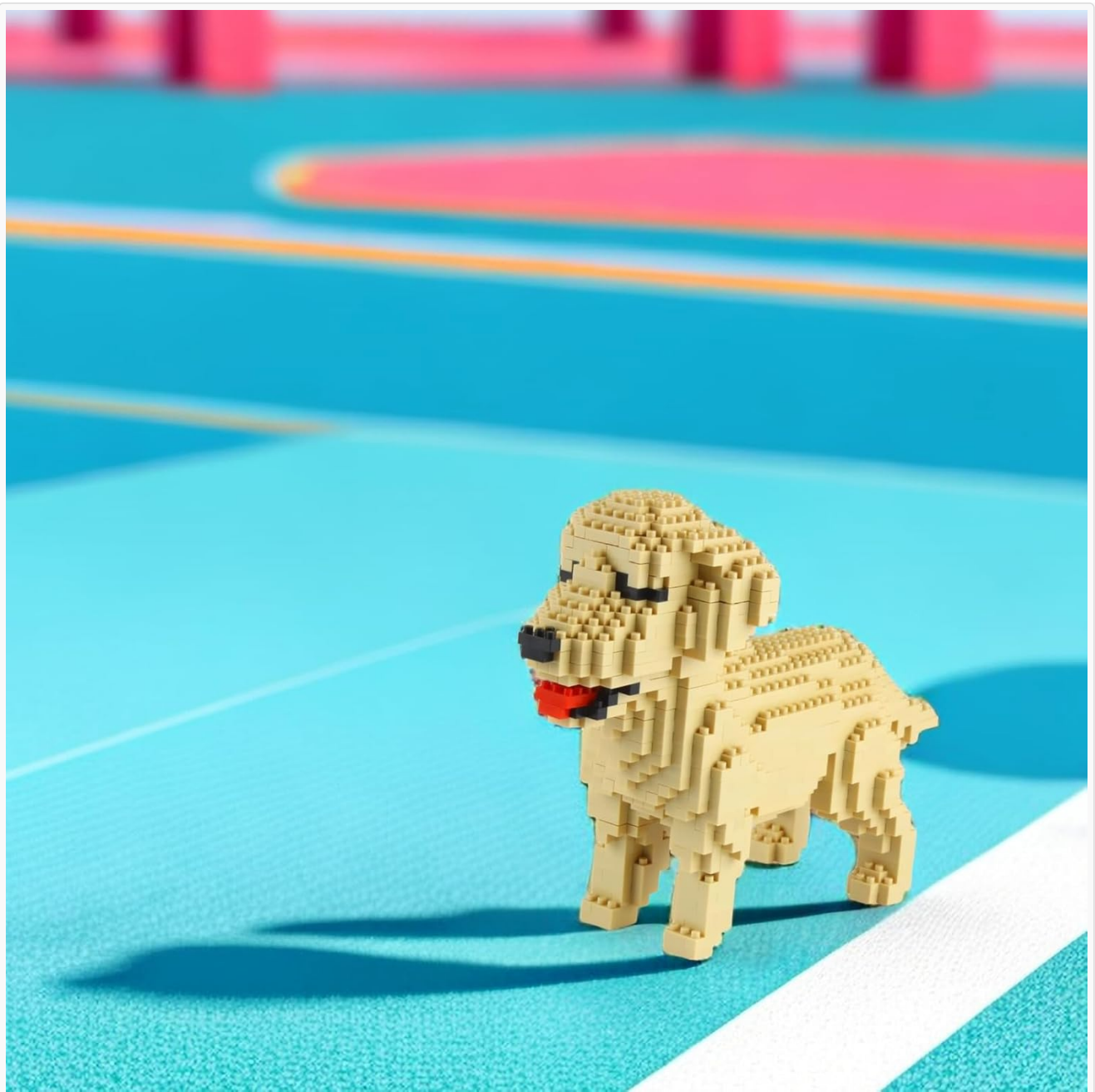


Image: The fully assembled Larcele Micro Dog Building Blocks Golden Retriever model, displayed on a vibrant blue and pink surface.

## 5. Care and Maintenance

- **Cleaning:** To clean the assembled model, gently wipe with a dry, soft cloth. Avoid using harsh chemicals or abrasive materials.
- **Storage:** Store the model in a stable, dry environment away from direct sunlight and extreme temperatures to prevent discoloration or material degradation.
- **Handling:** Handle the assembled model with care to avoid accidental disassembly, especially of smaller components.

## 6. Troubleshooting

- **Missing Pieces:** If you believe pieces are missing, carefully re-check the packaging and work area. If pieces are genuinely missing, please contact Larcele customer support for assistance.
- **Difficulty Assembling:** The micro bricks require precision. If you encounter difficulty, re-examine the

instruction manual for the specific step. Ensure bricks are fully pressed into place. Using tweezers can significantly aid in precise placement.

- **Model Instability:** Ensure all bricks are firmly connected. If a section feels loose, gently press down on the connected bricks to secure them.

## 7. Specifications

Feature	Detail
Product Dimensions	8 x 3 x 5 inches (20.32 x 7.62 x 12.7 cm)
Item Weight	9.6 ounces (272 grams)
Item Model Number	LCE-KLJM-02US-CWG
Manufacturer Recommended Age	6 years and up (Recommended 14+ for assembly)
Material	Plastic

# size



Image: The assembled Golden Retriever model with its approximate dimensions: 19cm/7.48in length, 7cm/2.75in width, and 13cm/5.11in height.

## 8. Warranty and Support

Specific warranty details are not provided within this instruction manual. For information regarding product warranty, missing parts, or further support, please visit the official Larcele store or contact their customer service directly.

[Visit the Larcele Store](#)