

Creative SB1780

Creative Sound Blaster AE-9 User Manual

Model: SB1780

1. INTRODUCTION

This manual provides comprehensive instructions for the installation, operation, and maintenance of your Creative Sound Blaster AE-9 internal sound card. The Sound Blaster AE-9 is designed to deliver high-fidelity audio performance for personal computers, enhancing your gaming, music, and movie experiences.

Please read this manual thoroughly before using the product to ensure proper setup and optimal performance.

2. PACKAGE CONTENTS

- Creative Sound Blaster AE-9 Sound Card
- Audio Control Module (ACM)
- Quick Start Guide
- Installation CD (or download instructions for drivers/software)
- Various audio cables (e.g., RCA, optical)
- 6-pin PCIe power cable (if not integrated)

3. SETUP AND INSTALLATION

3.1 System Requirements

- Available PCIe x1 slot (or higher)
- Available 6-pin PCIe power connector from PSU
- Windows operating system (Windows 10 recommended)
- Minimum 4GB RAM

- Intel Core i3 or AMD equivalent processor

3.2 Hardware Installation

1. **Prepare your computer:** Power off your computer and disconnect all cables. Open the computer case.
2. **Locate a PCIe slot:** Identify an available PCIe x1, x4, x8, or x16 slot on your motherboard.
3. **Install the Sound Card:** Carefully insert the Sound Blaster AE-9 card into the chosen PCIe slot until it is firmly seated. Secure it with the case screw.

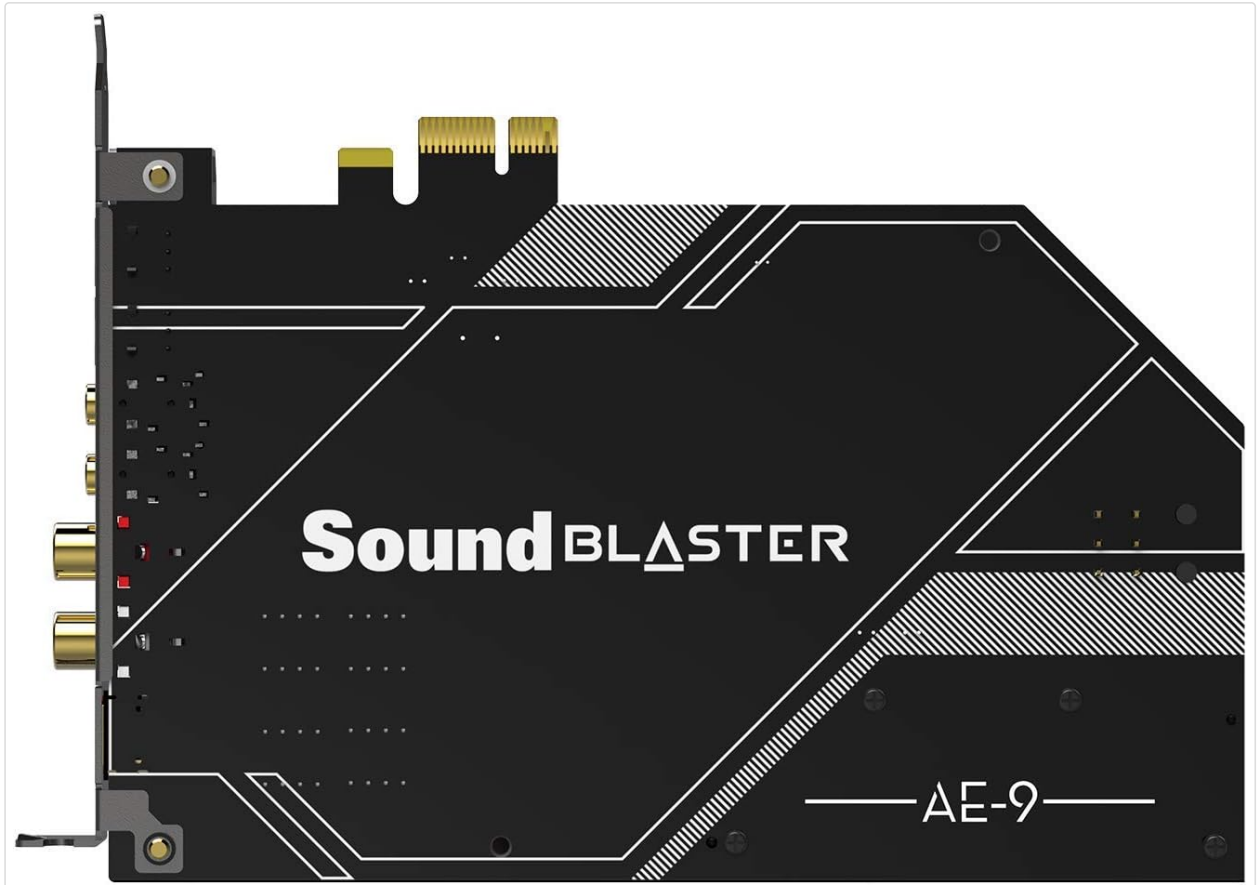


Figure 3.2.1: Creative Sound Blaster AE-9 sound card with its rear panel connectors. This image highlights the various input and output ports available on the sound card itself, including RCA, optical, and the ACM Link port.

4. **Connect Power:** Connect a 6-pin PCIe power cable from your power supply unit (PSU) to the corresponding port on the Sound Blaster AE-9 card. This connection is crucial for the card's operation, especially for features like phantom power.



Figure 3.2.2: The 6-pin PCIe power connector on the Creative Sound Blaster AE-9 sound card. This connection provides the necessary power for the card's advanced features and high-fidelity audio processing.

5. **Connect Audio Control Module (ACM):** Connect the ACM to the sound card using the dedicated ACM Link cable. The ACM provides convenient access to headphone/microphone jacks and volume control.



Figure 3.2.3: The Creative Sound Blaster AE-9 sound card paired with its Audio Control Module (ACM). This image illustrates how the two main components of the system connect and function together.



Figure 3.2.4: Front view of the Audio Control Module (ACM). This module features a large volume knob, 3.5mm and 6.3mm headphone outputs, a 3.5mm microphone input, and an XLR microphone input with +48V phantom power.



Figure 3.2.5: Rear view of the Audio Control Module (ACM). This side of the ACM includes RCA auxiliary input jacks for connecting external audio sources.

6. **Close Case and Reconnect:** Close your computer case and reconnect all peripherals and power cables.

3.3 Software Installation

1. **Power On:** Turn on your computer. Windows should detect new hardware.
2. **Install Drivers and Software:**
 - Insert the provided installation CD and follow the on-screen instructions.
 - Alternatively, visit the official Creative website (us.creative.com/support/downloads/) to download the latest drivers and the Creative Command Center software for the Sound Blaster AE-9.
3. **Restart:** Restart your computer after the installation is complete to ensure all changes take effect.

4. OPERATING THE SOUND BLASTER AE-9

4.1 Audio Control Module (ACM) Functions

- **Volume Knob:** The large knob on the ACM controls the master volume for all outputs.
- **Headphone Outputs:** Connect your headphones to either the 3.5mm or 6.3mm jack. The AE-9 features a powerful headphone amplifier.
- **Microphone Inputs:**
 - *3.5mm Mic In:* For standard PC microphones.
 - *XLR Mic In with +48V Phantom Power:* For professional condenser microphones requiring phantom power. Press the "+48V" button to enable/disable phantom power.
- **SBX Button:** Toggles SBX Pro Studio effects on/off.
- **IEM/High Gain Switch:** Adjusts headphone gain for different impedance headphones. Use IEM for in-ear monitors or low-impedance headphones, and High Gain for high-impedance headphones.
- **Auxiliary Input (Rear of ACM):** RCA inputs for connecting external audio devices like media players or consoles.

4.2 Creative Command Center Software

The Creative Command Center software is your primary interface for customizing the Sound Blaster AE-9's settings and features. It allows you to:

- Adjust equalizer settings and apply audio profiles.
- Configure SBX Pro Studio effects (Surround, Crystalizer, Bass, Smart Volume, Dialog Plus).
- Manage microphone settings, including noise reduction and voice morphing.
- Switch between Direct Mode (pure, unprocessed audio) and processed audio.
- Configure speaker/headphone output modes (stereo, 5.1 surround, 7.1 virtual surround).
- Update firmware.

Note: Ensure the software is always up-to-date for the best performance and access to the latest features.

5. MAINTENANCE

Regular maintenance helps ensure the longevity and optimal performance of your Sound Blaster AE-9.

- **Cleaning:** Use a soft, dry, anti-static cloth to gently wipe the sound card and ACM. Avoid using liquid cleaners or abrasive materials. Ensure the computer is powered off and unplugged before cleaning internal components.
- **Driver and Software Updates:** Periodically check the official Creative website for the latest drivers and Creative Command Center software updates. Keeping your software up-to-date can resolve bugs, improve performance, and add new features.
- **Environmental Conditions:** Ensure your computer case has adequate airflow to prevent overheating. Operate the sound card within recommended temperature and humidity ranges.

6. TROUBLESHOOTING

If you encounter issues with your Sound Blaster AE-9, refer to the following common troubleshooting steps:

Problem	Possible Cause / Solution
No audio output.	<ul style="list-style-type: none">◦ Check all cable connections (sound card to ACM, speakers/headphones to ACM).◦ Ensure the 6-pin PCIe power cable is securely connected to the sound card.◦ Verify that the Sound Blaster AE-9 is selected as the default playback device in Windows Sound settings.◦ Check volume levels in Windows and on the ACM.◦ Reinstall or update audio drivers.
Microphone not working or low volume.	<ul style="list-style-type: none">◦ Ensure the microphone is correctly plugged into the ACM.◦ If using an XLR condenser mic, verify +48V phantom power is enabled on the ACM.◦ Check microphone input levels in Windows Sound settings and Creative Command Center.◦ Ensure the Sound Blaster AE-9 is selected as the default recording device.
Distorted or poor audio quality.	<ul style="list-style-type: none">◦ Check for loose cable connections.◦ Disable any active audio enhancements (e.g., SBX Pro Studio effects) in Creative Command Center to isolate the issue.◦ Ensure correct sample rate and bit depth settings in Windows and Creative Command Center (e.g., 48000Hz 24bit for gaming).◦ Verify headphone impedance setting (IEM/High Gain switch) on the ACM matches your headphones.

Problem	Possible Cause / Solution
DTS Connect mode stops working.	<ul style="list-style-type: none"> ◦ This can be an intermittent issue. Try restarting the Creative Command Center software or your computer. ◦ Ensure all drivers and software are updated to the latest version.
Loud pop when switching between speaker/headphone.	<ul style="list-style-type: none"> ◦ Avoid having headphones on when switching output modes. ◦ Lower the volume before switching outputs. ◦ Check for firmware updates that may address this behavior.

If problems persist, consult the Creative support website or contact their customer service.

7. SPECIFICATIONS

Feature	Detail
Model Number	SB1780
Product Dimensions	8.27 x 4.41 x 7.56 inches
Item Weight	2.73 pounds
Manufacturer	Creative Labs
Hardware Interface	PCIe
Audio Output Mode	Surround
Platform	Windows
Compatible Devices	Personal Computer, Laptop, Gaming Console, Speaker, Headphone, Microphone
Date First Available	December 20, 2018







8. WARRANTY AND SUPPORT

Creative products are covered by a limited warranty. For detailed warranty information, terms, and conditions, please refer to the warranty card included with your product or visit the official Creative support website.

For technical support, driver downloads, FAQs, and further assistance, please visit the Creative support portal:

[Creative Support Website](#)

Related Documents - SB1780

	<p>Creative Sound Blaster Live! Getting Started and Installation Guide</p> <p>Comprehensive guide for Creative Sound Blaster Live! audio card. Covers hardware installation, software setup for Windows and MS-DOS, application usage, and troubleshooting for an enhanced PC audio experience.</p>
	<p>Creative Sound Blaster Live! 5.1 User Guide: Installation, Features, and Troubleshooting</p> <p>A comprehensive user guide for the Creative Sound Blaster Live! 5.1 audio card, detailing installation, software features, advanced configurations, specifications, and troubleshooting for an immersive audio experience.</p>
	<p>Creative Sound Blaster Live! Value Getting Started Guide</p> <p>Get started with your Creative Sound Blaster Live! Value sound card. This guide covers installation, software setup, features, and troubleshooting for Creative Audio Software.</p>
	<p>Creative Sound Blaster Extigy User Manual</p> <p>Comprehensive user manual for the Creative Sound Blaster Extigy external sound card, detailing installation, features, applications, and troubleshooting for enhanced digital audio entertainment.</p>
	<p>Creative Sound Blaster Audigy User Manual</p> <p>User manual for the Creative Sound Blaster Audigy audio card, detailing installation, software features, EAX ADVANCED HD, and troubleshooting for SB1394 and non-SB1394 models.</p>
	<p>Creative Sound Blaster Audigy Rx PCI-e Sound Card Quick Start Guide</p> <p>Learn how to install and use your Creative Sound Blaster Audigy Rx 7.1 PCI-e Sound Card, featuring high-performance audio, dual mic inputs, and advanced surround sound capabilities.</p>