

## WEN DF475T

# WEN 4,750-Watt Dual Fuel Portable Generator (DF475T) User Manual

Model: DF475T

## 1. INTRODUCTION

The WEN DF475T is a versatile 4,750-watt dual fuel portable generator designed to provide reliable power using either gasoline or liquefied petroleum gas (LPG). This manual provides essential information for the safe and efficient operation and maintenance of your generator.

### Key Features:

- Dual fuel capability: Easily switch between gasoline (4750 surge watts, 3800 running watts) and propane (4350 surge watts, 3500 running watts).
- Electric start: Conveniently power the 224cc 4-stroke OHV engine with the turn of a key.
- Voltage selection: Switch between 120V and 240V for various applications, including transfer switches and emergency backup.
- Extended runtime: A 4-gallon fuel tank provides up to 11 hours of half-load runtime on gasoline.
- Multiple outlets: Includes two 120V GFCI outlets (5-20R), a 120V/240V NEMA 30A twist lock (L14-30R), and a 12V DC cigarette-lighter-style plug.
- Portability: Equipped with a wheel and handle kit for easy transportation.

## 2. SAFETY INFORMATION

Always operate the generator in a well-ventilated area to prevent carbon monoxide poisoning. Do not operate indoors or in enclosed spaces. Keep children and pets away from the generator during operation. Ensure the generator is properly grounded before use. Read and understand all safety warnings and instructions in the full manual before operating.

### 3. PACKAGE CONTENTS

---

Verify that all items are present upon unpacking:

- WEN DF475T Dual Fuel Portable Generator
- Wheel Kit (wheels, axles, hardware)
- Handle Kit (handle, mounting brackets, hardware)
- 12V Battery (for electric start)
- 47-inch LPG Connection Hose with Regulator
- Bottle of 10W-30 Engine Oil
- Spark Plug Wrench
- Funnel
- Owner's Manual

### 4. ASSEMBLY

---

Before initial use, some assembly is required. Ensure the generator is on a stable, level surface during assembly.

#### 4.1. Install Wheels and Handle

1. Attach the wheels to the generator frame using the provided axles and hardware.
2. Secure the handle to the generator frame using the mounting brackets and hardware.



Figure 1: Close-up of the generator's wheel. The orange wheel hub and black tire are visible, attached to the generator frame.

## 4.2. Connect Battery

The 12V battery for the electric start is included but may not be fully connected. Locate the battery and ensure the negative cable is securely attached. Refer to the quick start guide for detailed instructions.



Figure 2: The generator's control panel with various outlets and switches, and the 12V battery with red and black cables connected.

For a visual guide on unpacking and initial setup, refer to the video below:

Video 1: Unboxing and initial setup of the WEN 4750 Watt Dual Fuel Portable Generator, demonstrating wheel kit installation and battery connection.

## 5. SETUP

### 5.1. Add Engine Oil

Before starting, ensure the engine oil reservoir is filled to the appropriate level. Use the provided 10W-30 engine oil and funnel. Do not overfill.

### 5.2. Fuel Selection (Gasoline or Propane)

The generator operates on either gasoline or propane. Select your desired fuel source using the fuel switch dial on the control panel.

- **For Gasoline:** Fill the 4-gallon fuel tank with fresh, unleaded gasoline.
- **For Propane:** Connect the 47-inch LPG connection hose to a propane tank and then to the generator's propane inlet.



Figure 3: The WEN DF475T generator with a propane tank connected via a hose, illustrating the dual fuel capability.

## 6. OPERATING INSTRUCTIONS

---

### 6.1. Starting the Generator

1. Ensure all electrical devices are disconnected from the generator.
2. Select your desired fuel source (Gasoline or Propane).
3. Turn the fuel valve to the ON position.
4. Move the choke lever to the CLOSE position.
5. Insert the key into the engine switch and turn it to the START position for 2-3 seconds.
6. Once the engine starts, slowly move the choke lever to the OPEN position.
7. Allow the generator to run for a few minutes before connecting devices.

### 6.2. Connecting Electrical Devices

Once the generator is running stably, you can connect your electrical devices to the appropriate outlets. The generator features:

- Two 120V GFCI outlets (5-20R)
- One 120V/240V NEMA 30A twist lock (L14-30R)
- One 12V DC cigarette-lighter-style plug

Use the voltage selector switch to choose between 120V and 240V as needed. Ensure the main circuit breakers are in the ON position.





Figure 4: The WEN DF475T generator, showcasing its robust frame, engine, and the accessible control panel with various outlets and switches.

## 7. MAINTENANCE

Regular maintenance ensures the longevity and optimal performance of your generator.

- **Oil Changes:** Check engine oil before each use and change regularly according to the manual's schedule.
- **Fuel Storage:** If storing the generator for extended periods, drain the gasoline or run the engine until the fuel tank is empty to prevent stale fuel issues. Propane does not degrade over time.
- **Air Filter:** Inspect and clean the air filter regularly.
- **Spark Plug:** Check and clean or replace the spark plug as needed.

## 8. TROUBLESHOOTING

Here are some common issues and potential solutions:

- **Generator will not start:** Check fuel level, ensure fuel valve is open, choke position is correct, and battery is connected and charged.
- **No power output:** Ensure all circuit breakers are in the ON position. If using 240V, note that 120V outlets may be disconnected.
- **Battery not holding charge:** The included 12V battery may require periodic charging, especially after extended storage. Consider a separate 12V battery charger if needed.
- **Missing hardware/parts:** If any components are missing upon delivery, contact WEN customer support immediately.







## 9. SPECIFICATIONS

Feature	Specification
Brand	WEN
Model Number	DF475T
Starting Wattage	4750 Watts
Running Wattage (Gasoline)	3800 Watts
Running Wattage (Propane)	3500 Watts
Fuel Type	Gasoline, Liquefied Petroleum Gas
Engine Displacement	224 Cubic Centimeters
Tank Volume	4 Gallons
Voltage	120 Volts / 240 Volts
Ignition System Type	Electric Start
Item Weight	105.8 Pounds
Product Dimensions	23.2"L x 17.5"W x 18.5"H

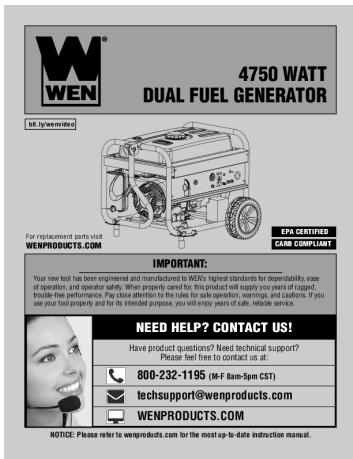
## 10. WARRANTY AND SUPPORT

The WEN DF475T generator comes with a **2-year warranty**. For technical assistance, parts, or warranty claims, please contact WEN customer support. Refer to the owner's manual for detailed contact information.

## Related Documents - DF475T

	<p><a href="#">WEN DF680iX 6800-Watt Dual Fuel Inverter Generator Instruction Manual</a></p> <p>Comprehensive instruction manual for the WEN DF680iX 6800-Watt Dual Fuel Inverter Generator. Covers safety, setup, operation, maintenance, and troubleshooting. Visit WENPRODUCTS.COM for more information.</p>
	<p><a href="#">WEN DF480iX 4800-Watt Dual Fuel Inverter Generator Instruction Manual</a></p> <p>This manual provides essential information for the safe operation, maintenance, and troubleshooting of the WEN DF480iX 4800-Watt Dual Fuel Inverter Generator. Learn about safety features, specifications, and how to get the most out of your generator.</p>
	<p><a href="#">WEN DF680iX 6800-Watt Dual Fuel Inverter Generator Instruction Manual</a></p> <p>Comprehensive instruction manual for the WEN DF680iX 6800-Watt Dual Fuel Inverter Generator, covering safety, operation, maintenance, and specifications.</p>
	<p><a href="#">WEN DF680iX 6800-Watt Dual Fuel Inverter Generator Instruction Manual</a></p> <p>This manual provides comprehensive instructions for the WEN DF680iX 6800-Watt Dual Fuel Inverter Generator, covering safety, operation, maintenance, and troubleshooting. Learn how to safely set up, use, and maintain your generator for optimal performance and longevity.</p>
	<p><a href="#">WEN DF680iX 6800-Watt Dual Fuel Inverter Generator Instruction Manual</a></p> <p>This comprehensive instruction manual for the WEN DF680iX 6800-Watt Dual Fuel Inverter Generator provides essential information on safe operation, preparation, usage, maintenance, and troubleshooting. Learn how to maximize the lifespan and performance of your generator.</p>
	<p><a href="#">WEN DF480iX 4800-Watt Dual Fuel Inverter Generator: User Manual &amp; Safety Guide</a></p> <p>This instruction manual provides essential information for the WEN DF480iX 4800-Watt Dual Fuel Inverter Generator, covering setup, operation, maintenance, and safety guidelines for reliable power generation.</p>





### [\[pdf\]](#) User Manual Dimension Guide

WEN DF475T 4750 Watt Dual Fuel Portable Generator Review manual 20211208 v 1639000818 cdn

shopify s files 1 0012 0350 3168 |||

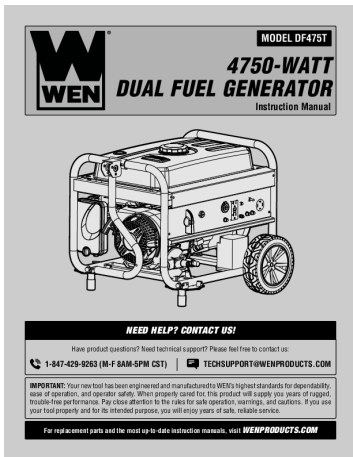
19 18 17 16 15 14 13 12 11 10 9 8 7 6 5 4 3 bit.ly/wenvideo 4750 WATT DUAL FUEL

GE ... ne Fuel Tank Capacity Oil Capacity Half-Load Run Time Product Dimensions

Product Net Weight DF475, **DF475T** Gasoline: 3800 Watts, LPG: 3500 Watts

Gasoline: 4750 Watts, LPG: 4350 Watts 60Hz AC: 120V/240...

lang:en **score:32** filesize: 4.15 M page\_count: 40 document date: 2021-12-08



### [\[pdf\]](#) User Manual Specifications

Click here to view the product manualWEN DF475T 4 750 Watt 120V 240V Dual Fuel Portable Generator

with Whee — WEN ProductsDF475T manual 20250109cdn shopify s files 1 0012 0350 3168 20250109 v

1737660493 |||

MODEL **DF475T** 4750-WATT DUAL FUEL GENERATOR Instruction Manual NEED

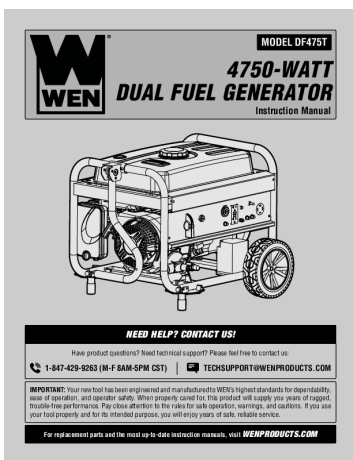
HELP CONTACT US Have product questions Need technical support Please feel free

to contact us: 1-847-429-9263 M-F 8AM-5PM CST TECHSUPPORT

WENPRODUCTS.COM IMPORTANT: Your new tool has been engineered and

manufactured to WEN ...

lang:en **score:29** filesize: 6.11 M page\_count: 44 document date: 2025-01-09



### [\[pdf\]](#) User Manual Specifications

Click here to view the product manual WEN DF475T 4 750 3 800 Watt 120 Volt 240 Dual Fuel Gasoline

and P — Products 20240209 v 1708377827 cdn shopify s files 1 0012 0350 3168 |||

MODEL **DF475T** 4750-WATT DUAL FUEL GENERATOR Instruction Manual NEED

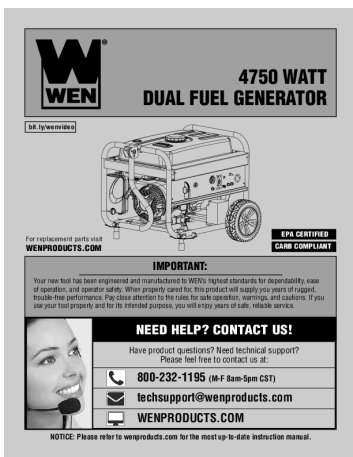
HELP CONTACT US Have product questions Need technical support Please feel free

to contact us: 1-847-429-9263 M-F 8AM-5PM CST TECHSUPPORT

WENPRODUCTS.COM IMPORTANT: Your new tool has been engineered and

manufactured to WEN ...

lang:en **score:29** filesize: 6.11 M page\_count: 44 document date: 2024-02-09



### [\[pdf\]](#) User Manual Dimension Guide

Click here to view the product manual WEN DF475T 4 750 3 800 Watt 120 Volt 240 Dual Fuel Gasoline

and P — Products 20220623 3db370cb 1261 44ad 9e38 765a438668d7 v 1664397945 cdn shopify s files

1 0012 0350 3168 |||

19 18 17 16 15 14 13 12 11 10 9 8 7 6 5 4 3 bit.ly/wenvideo 4750 WATT DUAL FUEL

GE ... ne Fuel Tank Capacity Oil Capacity Half-Load Run Time Product Dimensions

Product Net Weight DF475, **DF475T** Gasoline: 3800 Watts, LPG: 3500 Watts

Gasoline: 4750 Watts, LPG: 4350 Watts 60Hz AC: 120V/240...

lang:en **score:28** filesize: 4.15 M page\_count: 40 document date: 2022-06-23



**4750 WATT  
DUAL FUEL GENERATOR**



For replacement parts visit  
**WENPRODUCTS.COM**

**IMPORTANT:**  
Your new tool has been engineered and manufactured to WEN's highest standards for dependability, ease of operation, and operator safety. When properly cared for, this product will supply you years of rugged, trouble-free performance. Pay close attention to the rules for safe operation, warnings, and cautions. If you use your tool properly and for its intended purpose, you will enjoy years of safe, reliable service.

**NEED HELP? CONTACT US!**  
Have product questions? Need technical support?  
Please feel free to contact us at:

 **800-232-1195 (M-F 8am-5pm CST)**  
 **techsupport@wenproducts.com**  
 **WENPRODUCTS.COM**

NOTICE: Please refer to wenproducts.com for the most up-to-date instruction manual.

**EPA CERTIFIED  
CARB COMPLIANT**

[\[pdf\]](#) User Manual Dimension Guide

DF475 manual 20181108 Shopify No information is available for this page cdn shopify s files 1 0012 0350 3168 |||

19 18 17 16 15 14 13 12 11 10 9 8 7 6 5 4 3 bit.ly/wenvideo 4750 WATT DUAL FUEL GE ... ne Fuel Tank Capacity Oil Capacity Half-Load Run Time Product Dimensions Product Net Weight DF475, **DF475T** Gasoline: 3800 Watts, LPG: 3500 Watts Gasoline: 4750 Watts, LPG: 4350 Watts 60Hz AC: 120V/240...

lang:en **score:20** filesize: 6.02 M page\_count: 40 document date: 2018-11-09

PORTABLE GENERATORS ELIGIBLE FOR \$200 REBATES				
Manufacturer	Model	Fuel Type	Wattage	Rebate Period
Generac	7023	Gasoline	7000	12/1/2022 - 11/30/2023
Generac	7024	Gasoline	7000	12/1/2022 - 11/30/2023
Generac	7025	Gasoline	7000	12/1/2022 - 11/30/2023
Generac	7026	Gasoline	7000	12/1/2022 - 11/30/2023
Generac	7027	Gasoline	7000	12/1/2022 - 11/30/2023
Generac	7028	Gasoline	7000	12/1/2022 - 11/30/2023
Generac	7029	Gasoline	7000	12/1/2022 - 11/30/2023
Generac	7030	Gasoline	7000	12/1/2022 - 11/30/2023
Generac	7031	Gasoline	7000	12/1/2022 - 11/30/2023
Generac	7032	Gasoline	7000	12/1/2022 - 11/30/2023
Generac	7033	Gasoline	7000	12/1/2022 - 11/30/2023
Generac	7034	Gasoline	7000	12/1/2022 - 11/30/2023
Generac	7035	Gasoline	7000	12/1/2022 - 11/30/2023
Generac	7036	Gasoline	7000	12/1/2022 - 11/30/2023
Generac	7037	Gasoline	7000	12/1/2022 - 11/30/2023
Generac	7038	Gasoline	7000	12/1/2022 - 11/30/2023
Generac	7039	Gasoline	7000	12/1/2022 - 11/30/2023
Generac	7040	Gasoline	7000	12/1/2022 - 11/30/2023
Generac	7041	Gasoline	7000	12/1/2022 - 11/30/2023
Generac	7042	Gasoline	7000	12/1/2022 - 11/30/2023
Generac	7043	Gasoline	7000	12/1/2022 - 11/30/2023
Generac	7044	Gasoline	7000	12/1/2022 - 11/30/2023
Generac	7045	Gasoline	7000	12/1/2022 - 11/30/2023
Generac	7046	Gasoline	7000	12/1/2022 - 11/30/2023
Generac	7047	Gasoline	7000	12/1/2022 - 11/30/2023
Generac	7048	Gasoline	7000	12/1/2022 - 11/30/2023
Generac	7049	Gasoline	7000	12/1/2022 - 11/30/2023
Generac	7050	Gasoline	7000	12/1/2022 - 11/30/2023
Generac	7051	Gasoline	7000	12/1/2022 - 11/30/2023
Generac	7052	Gasoline	7000	12/1/2022 - 11/30/2023
Generac	7053	Gasoline	7000	12/1/2022 - 11/30/2023
Generac	7054	Gasoline	7000	12/1/2022 - 11/30/2023
Generac	7055	Gasoline	7000	12/1/2022 - 11/30/2023
Generac	7056	Gasoline	7000	12/1/2022 - 11/30/2023
Generac	7057	Gasoline	7000	12/1/2022 - 11/30/2023
Generac	7058	Gasoline	7000	12/1/2022 - 11/30/2023
Generac	7059	Gasoline	7000	12/1/2022 - 11/30/2023
Generac	7060	Gasoline	7000	12/1/2022 - 11/30/2023
Generac	7061	Gasoline	7000	12/1/2022 - 11/30/2023
Generac	7062	Gasoline	7000	12/1/2022 - 11/30/2023
Generac	7063	Gasoline	7000	12/1/2022 - 11/30/2023
Generac	7064	Gasoline	7000	12/1/2022 - 11/30/2023
Generac	7065	Gasoline	7000	12/1/2022 - 11/30/2023
Generac	7066	Gasoline	7000	12/1/2022 - 11/30/2023
Generac	7067	Gasoline	7000	12/1/2022 - 11/30/2023
Generac	7068	Gasoline	7000	12/1/2022 - 11/30/2023
Generac	7069	Gasoline	7000	12/1/2022 - 11/30/2023
Generac	7070	Gasoline	7000	12/1/2022 - 11/30/2023
Generac	7071	Gasoline	7000	12/1/2022 - 11/30/2023
Generac	7072	Gasoline	7000	12/1/2022 - 11/30/2023
Generac	7073	Gasoline	7000	12/1/2022 - 11/30/2023
Generac	7074	Gasoline	7000	12/1/2022 - 11/30/2023
Generac	7075	Gasoline	7000	12/1/2022 - 11/30/2023
Generac	7076	Gasoline	7000	12/1/2022 - 11/30/2023
Generac	7077	Gasoline	7000	12/1/2022 - 11/30/2023
Generac	7078	Gasoline	7000	12/1/2022 - 11/30/2023
Generac	7079	Gasoline	7000	12/1/2022 - 11/30/2023
Generac	7080	Gasoline	7000	12/1/2022 - 11/30/2023
Generac	7081	Gasoline	7000	12/1/2022 - 11/30/2023
Generac	7082	Gasoline	7000	12/1/2022 - 11/30/2023
Generac	7083	Gasoline	7000	12/1/2022 - 11/30/2023
Generac	7084	Gasoline	7000	12/1/2022 - 11/30/2023
Generac	7085	Gasoline	7000	12/1/2022 - 11/30/2023
Generac	7086	Gasoline	7000	12/1/2022 - 11/30/2023
Generac	7087	Gasoline	7000	12/1/2022 - 11/30/2023
Generac	7088	Gasoline	7000	12/1/2022 - 11/30/2023
Generac	7089	Gasoline	7000	12/1/2022 - 11/30/2023
Generac	7090	Gasoline	7000	12/1/2022 - 11/30/2023
Generac	7091	Gasoline	7000	12/1/2022 - 11/30/2023
Generac	7092	Gasoline	7000	12/1/2022 - 11/30/2023
Generac	7093	Gasoline	7000	12/1/2022 - 11/30/2023
Generac	7094	Gasoline	7000	12/1/2022 - 11/30/2023
Generac	7095	Gasoline	7000	12/1/2022 - 11/30/2023
Generac	7096	Gasoline	7000	12/1/2022 - 11/30/2023
Generac	7097	Gasoline	7000	12/1/2022 - 11/30/2023
Generac	7098	Gasoline	7000	12/1/2022 - 11/30/2023
Generac	7099	Gasoline	7000	12/1/2022 - 11/30/2023
Generac	7100	Gasoline	7000	12/1/2022 - 11/30/2023
Generac	7101	Gasoline	7000	12/1/2022 - 11/30/2023
Generac	7102	Gasoline	7000	12/1/2022 - 11/30/2023
Generac	7103	Gasoline	7000	12/1/2022 - 11/30/2023
Generac	7104	Gasoline	7000	12/1/2022 - 11/30/2023
Generac	7105	Gasoline	7000	12/1/2022 - 11/30/2023
Generac	7106	Gasoline	7000	12/1/2022 - 11/30/2023
Generac	7107	Gasoline	7000	12/1/2022 - 11/30/2023
Generac	7108	Gasoline	7000	12/1/2022 - 11/30/2023
Generac	7109	Gasoline	7000	12/1/2022 - 11/30/2023
Generac	7110	Gasoline	7000	12/1/2022 - 11/30/2023
Generac	7111	Gasoline	7000	12/1/2022 - 11/30/2023
Generac	7112	Gasoline	7000	12/1/2022 - 11/30/2023
Generac	7113	Gasoline	7000	12/1/2022 - 11/30/2023
Generac	7114	Gasoline	7000	12/1/2022 - 11/30/2023
Generac	7115	Gasoline	7000	12/1/2022 - 11/30/2023
Generac	7116	Gasoline	7000	12/1/2022 - 11/30/2023
Generac	7117	Gasoline	7000	12/1/2022 - 11/30/2023
Generac	7118	Gasoline	7000	12/1/2022 - 11/30/2023
Generac	7119	Gasoline	7000	12/1/2022 - 11/30/2023
Generac	7120	Gasoline	7000	12/1/2022 - 11/30/2023
Generac	7121	Gasoline	7000	12/1/2022 - 11/30/2023
Generac	7122	Gasoline	7000	12/1/2022 - 11/30/2023
Generac	7123	Gasoline	7000	12/1/2022 - 11/30/2023
Generac	7124	Gasoline	7000	12/1/2022 - 11/30/2023
Generac	7125	Gasoline	7000	12/1/2022 - 11/30/2023
Generac	7126	Gasoline	7000	12/1/2022 - 11/30/2023
Generac	7127	Gasoline	7000	12/1/2022 - 11/30/2023
Generac	7128	Gasoline	7000	12/1/2022 - 11/30/2023
Generac	7129	Gasoline	7000	12/1/2022 - 11/30/2023
Generac	7130	Gasoline	7000	12/1/2022 - 11/30/2023
Generac	7131	Gasoline	7000	12/1/2022 - 11/30/2023
Generac	7132	Gasoline	7000	12/1/2022 - 11/30/2023
Generac	7133	Gasoline	7000	12/1/2022 - 11/30/2023
Generac	7134	Gasoline	7000	12/1/2022 - 11/30/2023
Generac	7135	Gasoline	7000	12/1/2022 - 11/30/2023
Generac	7136	Gasoline	7000	12/1/2022 - 11/30/2023
Generac	7137	Gasoline	7000	12/1/2022 - 11/30/2023
Generac	7138	Gasoline	7000	12/1/2022 - 11/30/2023
Generac	7139	Gasoline	7000	12/1/2022 - 11/30/2023
Generac	7140	Gasoline	7000	12/1/2022 - 11/30/2023
Generac	7141	Gasoline	7000	12/1/2022 - 11/30/2023
Generac	7142	Gasoline	7000	12/1/2022 - 11/30/2023
Generac	7143	Gasoline	7000	12/1/2022 - 11/30/2023
Generac	7144	Gasoline	7000	12/1/2022 - 11/30/2023
Generac	7145	Gasoline	7000	12/1/2022 - 11/30/2023
Generac	7146	Gasoline	7000	12/1/2022 - 11/30/2023
Generac	7147	Gasoline	7000	12/1/2022 - 11/30/2023
Generac	7148	Gasoline	7000	12/1/2022 - 11/30/2023
Generac	7149	Gasoline	7000	12/1/2022 - 11/30/2023
Generac	7150	Gasoline	7000	12/1/2022 - 11/30/2023
Generac	7151	Gasoline	7000	12/1/2022 - 11/30/2023
Generac	7152	Gasoline	7000	12/1/2022 - 11/30/2023
Generac	7153	Gasoline	7000	12/1/2022 - 11/30/2023
Generac	7154	Gasoline	7000	12/1/2022 - 11/30/2023
Generac	7155	Gasoline	7000	12/1/2022 - 11/30/2023
Generac	7156	Gasoline	7000	12/1/2022 - 11/30/2023
Generac	7157	Gasoline	7000	12/1/2022 - 11/30/2023
Generac	7158	Gasoline	7000	12/1/2022 - 11/30/2023
Generac	7159	Gasoline	7000	12/1/2022 - 11/30/2023
Generac	7160	Gasoline	7000	12/1/2022 - 11/30/2023
Generac	7161	Gasoline	7000	12/1/2022 - 11/30/2023
Generac	7162	Gasoline	7000	12/1/2022 - 11/30/2023
Generac	7163	Gasoline	7000	12/1/2022 - 11/30/2023
Generac	7164	Gasoline	7000	12/1/2022 - 11/30/2023
Generac	7165	Gasoline	7000	12/1/2022 - 11/30/2023
Generac	7166	Gasoline	7000	12/1/2022 - 11/30/2023
Generac	7167	Gasoline	7000	12/1/2022 - 11/30/2023
Generac	7168	Gasoline	7000	12/1/2022 - 11/30/2023
Generac	7169	Gasoline	7000	12/1/2022 - 11/30/2023
Generac	7170	Gasoline	7000	12/1/2022 - 11/30/2023
Generac	7171	Gasoline	7000	12/1/2022 - 11/30/2023
Generac	7172	Gasoline	7000	12/1/2022 - 11/30/2023
Generac	7173	Gasoline	7000	12/1/2022 - 11/30/2023
Generac	7174	Gasoline	7000	12/1/2022 - 11/30/2023
Generac	7175	Gasoline	7000	12/1/2022 - 11/30/2023
Generac	7176	Gasoline	7000	12/1/2022 - 11/30/2023
Generac	7177	Gasoline	7000	12/1/2022 - 11/30/2023
Generac	7178	Gasoline	7000	12/1/2022 - 11/30/2023
Generac	7179	Gasoline	7000	12/1/2022 - 11/30/2023
Generac	7180	Gasoline	7000	12/1/2022 - 11/30/2023
Generac	7181	Gasoline	7000	12/1/2022 - 11/30/2023
Generac	7182	Gasoline	7000	12/1/2022 - 11/30/2023
Generac	7183	Gasoline	7000	12/1/2022 - 11/30/2023
Generac	7184	Gasoline	7000	12/1/2022 - 11/30/2023
Generac	7185	Gasoline	7000	12/1/2022 - 11/30/2023
Generac	7186	Gasoline	7000	12/1/2022 - 11/30/2023
Generac	7187	Gasoline	7000	12/1/2022 - 11/30/2023
Generac	7188	Gasoline	7000	12/1/2022 - 11/30/2023
Generac	7189	Gasoline	7000	12/1/2022 - 11/30/2023
Generac	7190	Gasoline	7000	12/1/2022 - 11/30/2023
Generac	7191	Gasoline	7000	12/1/2022 - 11/30/2023
Generac	7192	Gasoline	7000	12/1/2022 - 11/30/2023
Generac	7193	Gasoline	7000	12/1/2022 - 11/30/2023
Generac	7194	Gasoline	7000	12/1/2022 - 11/30/2023
Generac	7195	Gasoline	7000	12/1/2022 - 11/30/2023
Generac	7196	Gasoline	7000	12/1/2022 - 11/30/2023
Generac	7197	Gasoline	7000	12/1/2022 - 11/30/2023
Generac	7198	Gasoline	7000	12/1/2022 - 11/30/2023
Generac	7199	Gasoline	7000	12/1/2022 - 11/30/2023
Generac	7200	Gasoline	7000	12/1/2022 - 11/30/2023
Generac	7201	Gasoline	7000	12/1/2022 - 11/30/2023
Generac	7202	Gasoline	7000	12/1/2022 - 11/30/2023
Generac	7203	Gasoline	7000	12/1/2022 - 11/30/2023
Generac	7204	Gasoline	7000	12/1/2022 - 11/30/2023
Generac	7205	Gasoline	7000	12/1/2022 - 11/30/2023
Generac	7206	Gasoline	7000	12/1/2022 - 11/30/2023
Generac	7207	Gasoline	7000	12/1/2022 - 11/30/2023
Generac	7208	Gasoline	7000	12/1/2022 - 11/30/2023
Generac	7209	Gasoline	7000	12/1/2022 - 11/30/2023
Generac	7210	Gasoline	7000	12/1/2022 - 11/30/2023
Generac	7211	Gasoline	7000	12/1/2022 - 11/30/2023
Generac	7212	Gasoline	7000	12/1/2022 - 11/30/2023
Generac	7213	Gasoline	7000	12/1/2022 - 11/30/2023
Generac	7214	Gasoline	7000	12/1/2022 - 11/30/2023
Generac	7215	Gasoline	7000	12/1/2022 - 11/30/2023
Generac	7216	Gasoline	7000	12/1/2022 - 11/30/2023
Generac	7217	Gasoline	7000	12/1/2022 - 11/30/2023
Generac	7218	Gasoline	7000	12/1/2022 - 11/30/2023
Generac	7219	Gasoline	7000	12/1/2022 - 11/30/2023
Generac	7220	Gasoline	7000	12/1/2022 - 11/30/2023
Generac	7221	Gasoline	7000	12/1

