

## Manuals+

[Q & A](#) | [Deep Search](#) | [Upload](#)

[manuals.plus](#) /

- › [ANLAN](#) /
- › [ANLAN 4-in-1 Ultrasonic Skin Scrubber User Manual](#)

**ANLAN ALDRY03-02**

# ANLAN 4-in-1 Ultrasonic Skin Scrubber User Manual

Model: ALDRY03-02 | Brand: ANLAN



Image: The ANLAN 4-in-1 Ultrasonic Skin Scrubber, a white handheld device with a metal spatula head and control buttons.

## 1. INTRODUCTION AND OVERVIEW

The ANLAN 4-in-1 Ultrasonic Skin Scrubber is a versatile facial device designed for comprehensive skincare. It utilizes advanced ultrasonic vibrations, EMS micro-currents, and ION technology to provide deep cleansing, exfoliation, nutrient absorption, and skin firming. This manual provides detailed instructions for safe and effective use of your device.

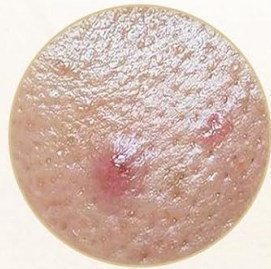
# Targets Multiple Skin Issues



Large Pores



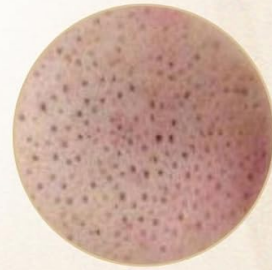
Dead Skin



Acne



Plugged Pores



Blackhead



Oily Skin

Image: Visual representation of various skin issues like large pores, plugged pores, dead skin, blackheads, acne, and oily skin, indicating the device targets these concerns.

## 2. SAFETY INFORMATION

- **Important:** Never use the device on dry skin. Always ensure your skin is wet or moist with water, toner, serum, or cream during operation.
- Do not immerse the device in water or any other liquid.
- Keep out of reach of children.
- Consult a dermatologist before use if you have sensitive skin, skin conditions, or are undergoing medical treatment.
- Discontinue use if you experience any discomfort or adverse reactions.

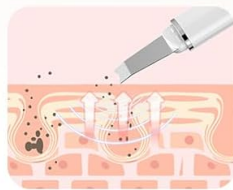
## 3. PRODUCT FEATURES

The ANLAN Skin Scrubber offers 4 distinct modes for comprehensive facial care:

- **Ultrasonic Mode:** For facial peeling and deep cleansing. Emits 24,000 Hz ultrasonic waves per second to quickly clean blackheads, whiteheads, keratin, dead skin, and acne.

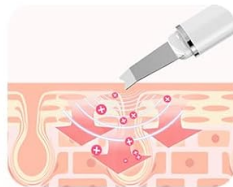
- **ION+ Mode:** For deep cleaning and impurity export. Helps soften old keratin, decompose melanin, and remove blackheads.
- **ION- Mode:** For nutrient import. Accelerates nutrient absorption from skincare products, promoting skin metabolism and reducing wrinkles.
- **EMS Mode:** For skin firming and lifting. Accelerates metabolism, renews skin cells, promotes collagen regeneration, and restores skin elasticity.

## 4 Modes for Comprehensive Skincare



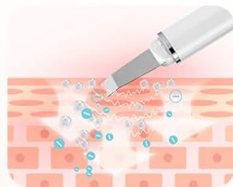
### ***Ion+ Export Mode:***

*Removes blackheads, dead skin, and excess oil for cleaner, smoother skin.*



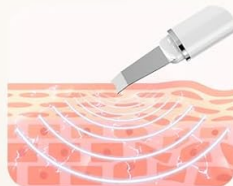
### ***Ion- Import Mode:***

*Helps nutrients deeply penetrate the skin, enhancing absorption.*



### ***EMS Lifting Mode:***

*Microcurrent stimulation improves skin firmness and contours the face.*



### ***Ultrasonic Mode:***

*Ultrasonic vibrations deeply cleanse pores for a more thorough cleanse.*



Image: A detailed diagram showing the four modes (Ion+ Export, Ion- Import, EMS Lifting, Ultrasonic) and their respective functions on the skin.

## 4. SETUP

1. **Initial Charge:** Before first use, fully charge the device for approximately 2 hours using the provided USB cable. The charging indicator will show progress and turn off when fully charged.
2. **Preparation:** Ensure the device is clean and dry before charging or storing.

## 5. OPERATING INSTRUCTIONS

Always ensure your face is thoroughly wet or moist with water, toner, serum, or cream before and during

use. Press and hold the power button for 2 seconds to turn the device on/off. Press the power button briefly to switch between modes.

Video: Demonstration of the ANLAN Ultrasonic Skin Scrubber for Face, showing the application of different modes for various skincare benefits.

### 5.1. Ultrasonic Mode (Deep Cleansing/Peeling)

This mode is ideal for removing blackheads, whiteheads, and dead skin cells.

1. Cleanse your face and keep it wet. You may apply a cleansing gel or water.
2. Turn on the device and select the 'Ultrasonic' mode.
3. Gently glide the spatula across your wet skin, moving it against the direction of pores. For example, move upwards on the chin and nose, and outwards on the forehead.
4. Use once a day for approximately 3 minutes.



Image: Close-up view of the device's spatula head vibrating and atomizing water droplets, demonstrating the high-frequency ultrasonic action.

### 5.2. ION+ Mode (Deep Cleaning/Export)

This mode helps to export impurities and deeply cleanse pores.



1. After washing your face, apply toner or appropriate makeup water to keep your face moist.
2. Select the 'ION+' mode.
3. Gently glide the spatula across your skin in the direction indicated in the figure (usually outwards and upwards).
4. Use 2-3 times per week for approximately 3 minutes per session.

### 5.3. ION- Mode (Nutrient Import)

This mode enhances the absorption of skincare products into your skin.

1. Apply your preferred serum, lotion, or facial mask to your face.
2. Select the 'ION-' mode.
3. Gently glide the spatula across your skin, moving it in the direction that helps spread the product evenly and promote absorption.
4. Use 2-3 times per week for approximately 3 minutes per session.

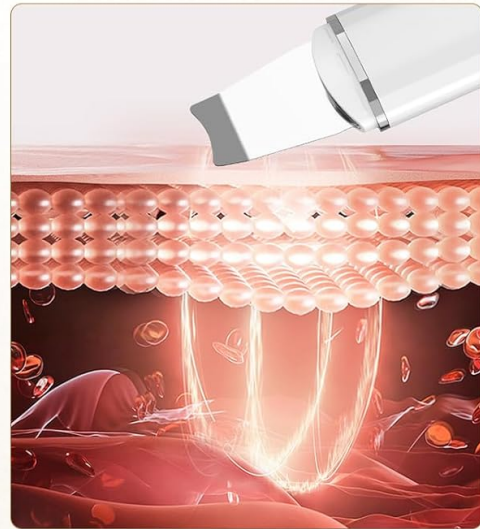


Image: An illustration detailing the positive ion export mode (ION+) for removing impurities and the negative ion import mode (ION-) for enhancing nutrient absorption.

### 5.4. EMS Mode (Lifting/Firming)

This mode helps to firm and lift the skin, promoting collagen regeneration.

1. Ensure your skin is moist and apply a suitable cream or gel.
2. Select the 'EMS' mode.
3. Gently glide the spatula across your skin, moving it upwards and outwards to stimulate muscles and improve elasticity. Hold the metal conductors on both sides of the device.
4. Use once a day for approximately 3 minutes.
5. *Note:* When using EMS mode, you may feel a mild micro-electric current. This is normal and not an electric shock. The sensation may vary depending on your skin type. If you have very sensitive skin, the micro-electric current may feel stronger, but it is completely safe.



## ***Efficient EMS Skin Activation***

***Deeply Stimulates Muscle Cells, Reshapes Youthful Skin.***

1. Lift sagging skin and reshape firm contours.
2. Promotes collagen production to reduce fine lines and wrinkles.
3. Enhances muscle elasticity for healthier and brighter skin.



When using EMS mode, you may feel a mild micro-electric current that penetrates deeply into your skin. This is normal and not an electric shock, so there's no need to worry! The sensation can vary depending on your skin type. If you have sensitive skin, the micro-electric current may feel stronger than for others, but it's completely safe.

Image: An illustration demonstrating how EMS micro-currents stimulate muscle cells to lift sagging skin, promote collagen production, and enhance muscle elasticity.

## **6. MAINTENANCE**

- **Cleaning:** After each use, wipe the spatula head and the device body with a soft, damp cloth. Do not use abrasive cleaners or immerse the device in water.
- **Storage:** Store the device in a cool, dry place, away from direct sunlight and high temperatures.
- **Charging:** Recharge the device when the battery indicator is low to ensure optimal performance.

## 7. TROUBLESHOOTING

Problem	Possible Cause	Solution
Device does not turn on.	Low battery; not holding power button long enough.	Charge the device fully. Press and hold the power button for 2 seconds.
No visible mist/vibration in Ultrasonic mode.	Skin is not wet enough; incorrect angle.	Ensure skin is thoroughly wet. Adjust the angle of the spatula to 45 degrees.
Skin feels irritated after use.	Used on dry skin; excessive pressure; sensitive skin.	Always use on wet skin. Apply gentle pressure. Reduce frequency of use or consult a dermatologist if irritation persists.

## 8. SPECIFICATIONS

- **Model Number:** ALDRY03-02
- **Dimensions (L x W x H):** 17.02 x 4.32 x 1.02 cm (6.7 x 1.7 x 0.4 inches)
- **Weight:** 95.25 grams (3.36 ounces)
- **Material:** Acrylonitrile Butadiene Styrene (ABS)
- **Power Source:** USB Rechargeable (Internal Battery)
- **Ultrasonic Frequency:** 24,000 Hz
- **Color:** White
- **UPC:** 634769602597

## 9. WARRANTY AND SUPPORT

For detailed warranty information, product registration, or customer support, please visit the official ANLAN website or contact their customer service department. Keep your purchase receipt for any warranty claims.

## ***Traditional Method***



### **Inadequate**

Squeezing blackheads with hands.



### **Unhygienic**

Facial cleansers only clean the surface, not deep cleansing.



### **Harmful to Skin**

Pimple poppers damage the outer skin layer.

**PK**

**PK**

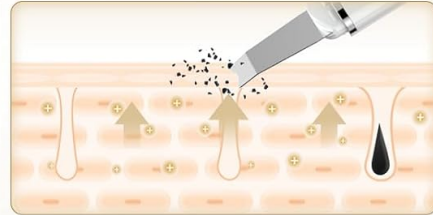
**PK**

## ***ANLAN Skin Scrubber***



### **Deep Cleansing**

Refreshes the skin and improves skin texture.



### **Purifies the Skin**

Reaches deep into the skin to cleanse and purify.



### **Brightens the Skin**

Smooths wrinkles and increases skin elasticity.

Image: A comparative graphic showing the disadvantages of traditional methods (like squeezing blackheads) versus the benefits of using the ANLAN Skin Scrubber for deep cleansing and skin purification.