

KUPPET 1040606300

KUPPET Full-Automatic Portable Washing Machine User Manual

Model: 1040606300

1. SAFETY INSTRUCTIONS

Please read all instructions carefully before using the appliance. Retain this manual for future reference.

- Ensure the washing machine is placed on a stable, level surface to prevent vibration and noise.
- Connect to a grounded power outlet. Do not use extension cords.
- Do not operate the machine if the power cord or plug is damaged.
- Keep children and pets away from the appliance during operation.
- Do not wash items that are waterproof or easily flammable.
- Always unplug the machine before cleaning or performing any maintenance.
- Ensure water inlet and drain hoses are securely connected to prevent leaks.

2. PRODUCT OVERVIEW

The KUPPET Full-Automatic Portable Washing Machine is designed for compact spaces, offering convenience and efficiency for your laundry needs.

Key Features:

- **Compact and Portable Design:** Ideal for small living spaces, dorms, RVs, and apartments.
- **Full-Automatic Operation:** Simplifies the washing process with automated spin-drying.
- **1.01 Cu.ft Capacity (approx. 11 lbs):** Suitable for small to medium loads of laundry.
- **3 Washing Programs:** Offers versatility for different fabric types and soil levels.
- **5 Water Level Selections:** Allows for water and energy conservation based on load size.
- **Stainless Steel Inner Tub:** Durable and gentle on clothes.
- **LED Display:** Provides clear information on cycle status and time remaining.
- **Drain Pump:** Facilitates easy water drainage.

Components:



Image 2.1: Internal components including the pulsator spin tub, water inlet, drain hose, and power wire.



Image 2.2: The single tub design for both washing and spinning.



Image 2.3: Compact design promoting efficient water and detergent usage.

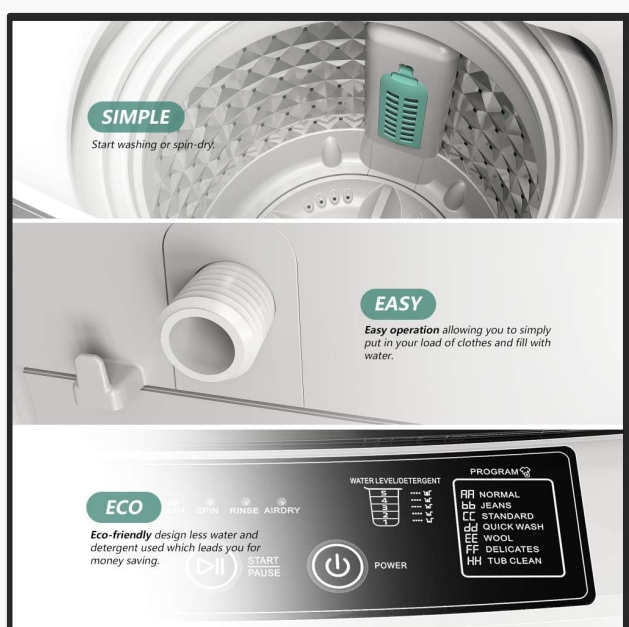


Image 2.4: Detailed view of the control panel and inner tub.

3. SETUP

3.1 Unpacking

- Carefully remove the washing machine from its packaging.
- Remove all packing materials, including any internal supports or protective films.
- It is normal for a small amount of residual water to be present inside the tub or hoses due to factory testing. This does not indicate a used or faulty product.

3.2 Placement

- Place the washing machine on a firm, level surface. Adjust the leveling feet if necessary to ensure stability.
- Ensure there is adequate space around the machine for ventilation and operation.

- Avoid direct sunlight or areas with high humidity.



Image 3.1: Examples of suitable placement locations for the portable washing machine.

3.3 Water and Drain Connections

- Connect the water inlet hose to a cold water tap. Ensure the connection is tight to prevent leaks.
- Position the drain hose into a sink or drain pipe. Ensure the drain hose is secured and at an appropriate height to allow for proper drainage.

3.4 Power Connection

- Plug the power cord into a dedicated, grounded electrical outlet.
- Do not share the outlet with other high-power appliances.

4. OPERATING INSTRUCTIONS

4.1 Control Panel Overview

The control panel features an LED display and various buttons for program selection, water level, and operation control.



Image 4.1: Detailed view of the control panel.

4.2 Loading Clothes

- Open the top lid.
- Place clothes loosely into the tub, ensuring not to overload. The maximum capacity is approximately 11 lbs.
- Close the lid securely.

4.3 Adding Detergent

- Add the appropriate amount of detergent directly into the tub with the clothes.
- Refer to your detergent's instructions for recommended quantities based on load size and water hardness.

4.4 Selecting Programs and Water Levels

- Press the **Power** button to turn on the machine.
- Use the **Water Level/Program** button to select one of the 3 washing programs (e.g., Normal, Standard, Quick Wash, Delicates, Wool, Tub Clean). The LED display will show the selected program.
- Adjust the water level using the **Water Level/Program** button if needed. There are 5 water level selections available.
- The machine also features indicators for Soak, Wash, Spin, Rinse, and Air Dry stages.

4.5 Starting and Pausing

- Press the **Start/Pause** button to begin the selected wash cycle.
- To pause the cycle, press the **Start/Pause** button again. Press it once more to resume.

5. MAINTENANCE

5.1 Cleaning the Tub

- Regularly clean the stainless steel inner tub to prevent residue buildup and odors.
- Use a soft cloth and mild detergent. Do not use abrasive cleaners.
- The machine may have a 'Tub Clean' program for automated cleaning. Refer to the control panel for this option.

5.2 Cleaning the Filter

- Locate the lint filter, typically inside the tub.
- Remove the filter and clean out any accumulated lint or debris.
- Rinse the filter under running water and reinsert it securely.

5.3 General Care

- Wipe down the exterior of the machine with a soft, damp cloth.
- Ensure the machine is dry after use to prevent mold or mildew.
- Check hoses periodically for any signs of wear or damage.

6. TROUBLESHOOTING

If you encounter issues with your washing machine, please refer to the following common troubleshooting steps:

- **Machine not starting:** Ensure the power cord is securely plugged in and the power button is pressed. Check if the lid is fully closed.
- **No water filling:** Check if the water tap is open and the water inlet hose is properly connected and not kinked.
- **Water not draining:** Ensure the drain hose is not kinked or blocked. Check if the drain pump filter (if accessible) is clear of debris.
- **Excessive vibration/noise:** Verify the machine is on a level surface and the leveling feet are properly adjusted. Ensure the load is balanced inside the tub.
- **Error codes:** If an error code appears on the LED display, consult the specific error code section in your full printed manual (if available) or contact customer support.

If the problem persists after attempting these steps, please contact KUPPET customer support for assistance.

7. SPECIFICATIONS

Feature	Specification
Brand	KUPPET
Model	1040606300
Item Weight	7.7 pounds
Max Spin Speed	1300 RPM
Installation Type	Portable, Freestanding
Special Features	Portable, Lightweight, Automatic, Compact
Color	Stainless Steel, Grey
Control Console	Push Button
Standard Cycles	3
Access Location	Top Load
Certification	Energy Star
Operation Mode	Fully Automatic

8. WARRANTY AND SUPPORT

For warranty information, product registration, or technical support, please refer to the documentation included with your purchase or visit the official KUPPET website. Keep your purchase receipt as proof of purchase.

